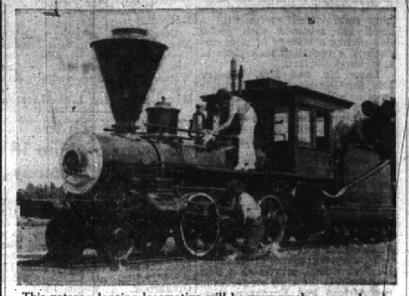


POTTED
TOMATO PLANTS
STARR GARDENS
 Crooks Road, 1 block south of 13 Mile Road.
 Phone LI 2-3822

Whiskers Abound in Traverse City as Community Prepares for Its Centennial

By The Old AAA Traveler
 Michigan through the years has been a great state for festivals and celebrations, as witness its Cherry Festival, its Tulip Time and its myriad other great pieces of pagantry. But this summer it will have what many believe will be a celebration to top anything ever staged before.
 This top-of-all celebration will



This veteran logging locomotive will be very much on parade when Traverse City stages its Centennial June 29-July 4. Presently 75 per cent of the business and professional men of Traverse City are out in full beard.

be the Traverse City Centennial, set for June 29-July 4, when the Cherry Capital of Michigan will mark the one hundredth anniversary of the landing of Captain Horace Boardman and his little band of followers, almost adventurers in that early day.

There will be three definite highlights in the celebration. First, the re-creation of the landing of Captain Boardman and the unveiling of a monument to commemorate that happening.

Impressive Parade
 Then there will be an impressive parade consisting of the old vehicles of timber days, such as the log sleigh, with the parade participants garbed in the clothing of the

period which they represent. Finally, there will be an elaborate re-creation of "The Drive In." In the olden days in the early spring when the lumberjacks hit town with their pockets full of money and their hearts full of desire to celebrate.
 And in this celebration Traverse City will select a queen, but this



Michigan is headed back to red ink financing of state government. A state treasury deficit is foreseen as the result of legislators' reluctance to enact new taxes and the constitutional mandate to divert 75 per cent of the state sales tax to local governments including schools.

Several capital newspaper correspondents, who watch daily the parade of events at Lansing, confide that the inevitability of new taxes in 1945 will hurt Governor representation at Lansing although cities foot most of the tax bills. Less than one-half of the counties are self-supporting through taxes. Put this on your phonograph, and you go around and around. Your conclusion will depend largely upon your viewpoint. The Highland Park, suburban newspaper of Detroit advocates a constitutional amendment to assure that each county will get back its "just share" of taxes.

Governor Sigler's recommendation for a constitutional study commission was approved by the house but rejected by the senate. Since the constitution was adopted in 1909, a total of 91 amendments have been submitted to the voters at elections. Of these, 43 were approved.

Like Alice in Wonderland who cried here she picked a finger, the General Motors "Train of Tomorrow" permits a traveler to see where he is going before he gets there. Which is to say that this writer was among the passengers on the Lansing-to-Detroit run last week and viewed the approaching landscape through the "Astradome" on top of one of the train coaches. It's an enclosed air-conditioned observatory. The noiseless glide of the Diesel-powered train is another feature which heralds tomorrow's railway transportation.

High-lights galore are on parade for the visitor, including the great sand dune section, Old Mission Peninsula and Leelanau Peninsula itself. Just a short jump and there is Interlochen, with its great National camp.

There is the thrill of lake trout fishing at Northport and at other points along the coast, and there is plenty of sport in the smaller panfish.

This year there will be no Chevrolet, as such, but that celebration will be combined with the Centennial.

Bloomfield Hills Youth on Occupation Duty in Japan

WITH THE EIGHTH ARMY IN TOKYO, JAPAN.—Private first class Christopher A. Luce, son of Mr. and Mrs. H. G. Luce of Bloomfield Hills, is now serving with the famed fighting 1st Cavalry Division, which is on occupation duty in the ten prefectures of the Tokyo-Yokohama area.

Overseas since November 9, 1946, Pfc. Luce is assigned to the 1st Squadron of the renowned 8th Cavalry Regiment as the third gunner on the 81 millimeter mortar. Before his enlistment in the Army, Pfc. Luce served in the Merchant Marine at Washington, D. C. He enlisted in the army on June 30, 1946, and underwent basic training at Fort McClellan, Ala.

In his spare time, under the Army Education Program, Pfc. Luce is studying forestry and plans, after his discharge, to attend school under the G.I. Bill of Rights to study either forestry or commercial art.

Pfc. Luce is the holder of the Atlantic War Zone Ribbon, Victory Ribbon, Pacific War Zone, Philippine Liberation Ribbon and a combat ribbon. These decorations he acquired during his service in the Merchant Marine.

TEEN DATE



HERE'S a summer dress that will please the teen-ager. It's made of broadcloth in Avico rayon, which means that it has a lustrous sheen. To add to these virtues, it's washable and inexpensive, too. The ruffled neckline, small puffed sleeves, and gathered skirt give it a pleasing softness. For helpful tips on washing your summer clothes, send a stamped, self-addressed envelope to the women's department of this paper for your free copy of the leaflet, "How to Wash Rayon."

survey that most clerks are inefficient and must be re-trained to give prompt, intelligent customer service. Another straw in the wind.
 Union bricklayers on state construction jobs are laying only 300 bricks a day compared with 1,000 pre-war, says A. N. Languis, state building director. Low efficiency of union labor is blamed by Languis for high costs. Example:
 A Caro state hospital building built in 1939 for \$81,143, is being duplicated this year. The 1947 cost will exceed \$280,000. Same building, but \$200,000 more!
 As a curb on juvenile driver's license, the Michigan legislature adopted a bill raising the minimum age from 14 to 16. However, license can be issued "in cases of necessity" where parents agree to assume full responsibility.

WHITE SIDEWALL TIRES

Premium Quality-Rayon Cord
 600 x 16 \$32.25
 650 x 16 39.05
 700 x 15 43.25
 FEDERAL EXCISE TAX TO BE ADDED
 SOLD ONLY IN SETS OF FIVE TIRES.
 7745 Grand River
 Detroit, Michigan
 Tyler 6-7714

KEEP Dad IN GOOD FORM



with a
Zero King
SPORT JACKET

- Wind and Water Repellent
- Natural and Putty
- Unlined or with Lining
- Deep Bywing

We Have A Selection
 from \$9.95 to \$24.50

- OTHER DAD'S DAY GIFTS**
- SOX pair 40c to \$2.50
 - SPORT SHIRTS \$3.95 to \$8.00
 - SLACKS \$6.25 to \$14.50
 - SWEATERS \$3.95 to \$10.00
 - HANDKERCHIEFS 35c to \$1.50
 - NECKTIES \$1.00 to \$5.00

PECK'S MEN'S WEAR
 S. Woodward near Maple Phone 230

NADER'S RUG RENOVATORS

Exclusive Washing and Repairing of ORIENTAL RUGS
 Work done by Native experts No Mechanical Devices Used
 TELEPHONE Temple 3-4907
 4852 Lincoln Detroit, Mich.



Landscape Construction & Garden Service

PRUNING and SPRAYING LAWN WORK
 Builders of Pools and Rock Gardens. Estates cared for. Everything for the Garden.
 20 Years Experience
ARTHUR S. OLSON
 Phone Farmington 9938

MATTHEW'S Tailor Shop and Furrier

Just Arrived!
 New Spring Samples for Ladies and Gents Suits and Topcoats
 244 E. MAPLE

Stratowriter



IDEAL CHOICE FOR EVERY GIFT OCCASION
 Whenever the occasion may be, you can make no better gift selection than Sheaffer's STRATOWRITER, the perfected slip-resistant writing instrument. Replete with exclusive features, STRATOWRITER insures precision performance under every writing condition, on every writing surface. STRATOWRITER writes a beautiful, permanent blue that dries instantly. The recipient of your gift will be delighted with STRATOWRITER, Sheaffer's new and versatile writing instrument. \$15.00 tax included.

SHEAFFER'S

WILSON'S
 Woodward at Maple

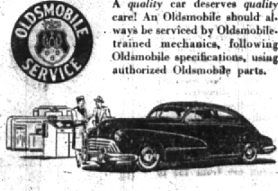
THE WAY TO GO...
 AUTOMATICALLY...
 WITHOUT A CLUTCH PEDAL—



All signs point to the new Oldsmobile with GM Hydra-Matic Drive... as the year's smart choice in ultra-modern transportation. For when you go the Hydra-Matic way, you go without shifting—you go without pushing a clutch. You get livelier performance... automatically. Greater safety... automatically. Improved economy... automatically. And as you relax and enjoy the ride, the gears shift for themselves... automatically... through all four forward speeds!

Hydra-Matic Drive is built and backed by General Motors—has been proved in the hands of more than 300,000 Oldsmobile owners during the past 7½ years. Today, the lowest-priced car to offer GM Hydra-Matic Drive* is the 1947 Oldsmobile—just as smooth to look at as it is to drive—just as smart in ultra-modern styling as it is in automatic driving ease!

THE WAY TO KEEP GOING—
 A quality car deserves quality care! An Oldsmobile should always be serviced by Oldsmobile-trained mechanics, following Oldsmobile specifications, using authorized Oldsmobile parts.



YOUR Oldsmobile DEALER
POMEROY and LYNCH CO.
 1204 S. WOODWARD PHONE 1446

FOR EVERY LEISURE HOUR... INDOORS AND OUT!



HOLIDAY PORTABLE RADIO

Just about the most usable radio you can imagine... a real multi-purpose set every member of the family will enjoy. The "Holiday" is an ideal portable, sturdy and light in weight, powerful enough to bring in distant stations loud and clear. Its "Flexo-grip" handle fits the hand comfortably... the long-life battery pack gives ample power for many hours of service. As a table model, too, it is tops... just plug into any AC/DC outlet and it's right at home. You'll carry the "Holiday" from room to room—to the porch or yard—use it morning, noon and night.

- Take it on your travels
- Use it indoors or out
- A beautiful and efficient table model

\$39.95
 LESS BATTERY

Leonard's
 162 W. MAPLE PHONE 223