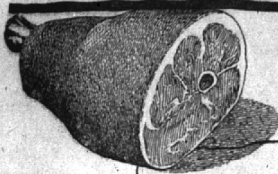


THEY'RE TENDER! THEY'RE JUICY! THEY'RE DELICIOUS!

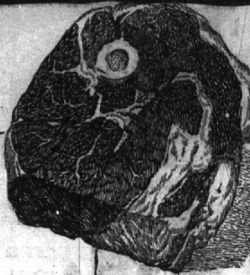
A&P's MONEY-SAVING MEATS



A BIG VARIETY OF FINE CUTS...SPECIALLY SELECTED FOR QUALITY!

FAMOUS BRAND
Hams
Shank End lb. **53¢**
Lean, Tender, Juicy

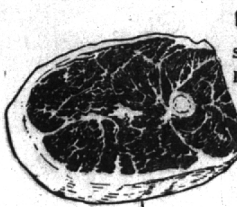
"SUPER-RIGHT"
CHUCK ROAST
lb. **49¢**
Close trimmed for Extra Value



BAKERY VALUES

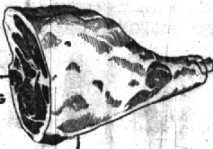
Loaf or Plain
MARVEL RAISIN BREAD
16-Oz. Loaf **15c**

- DONUTS Jane Parker Doz. Pkg. **15c**
- BAR CAKE Spanish 28-Oz. Size **25c**
- LOAF CAKE Sunshades 8-Oz. Size **25c**
- MUFFINS English 6 in Pkg. **23c**
- MARVEL BREAD Enriched White 16-Oz. Loaf **15c**
- RYE BREAD Marvel 20-Oz. Loaf **17c**
- JELLY ROLL Plain 11-Oz. Size **35c**
- LADY FINGERS Jane Parker Pkg. **29c**
- BREAKFAST ROLLS Cinnamon 12-Oz. Pkg. **25c**
- PAN ROLLS Jane Parker Pkg. **13c**
- FRUIT CAKE Jane Parker Dark 1 1/2 Lbs. **89c**
- FRUIT CAKE Jane Parker Light 2 Lbs. **\$2.25**

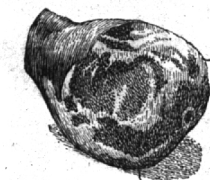


Round Steak
lb. **69¢**
Delicious and Thrifty

GENUINE SPRING
Leg of Lamb
lb. **59¢**
"Super-Right" Quality

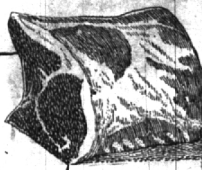


Round Steak Heavy Calif. Lb. **65c**
PORK SAUSAGE Country Style Lb. **49c**
WHITE FISH Lake Erie Lb. **49c**
COD STEAKS Fresh Lb. **37c**



MELLOW, SMOKED
Picnics
lb. **45¢**
Tasty and Economical

RIB END
Pork Roast
lb. **43¢**
Close trimmed to remove excess waste



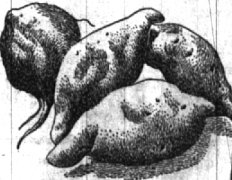
Herring Fresh Dressed Lb. **29c**
COD FILLETS Fresh Lb. **39c**
WHITING Dressed Lb. **25c**

DAIRY VALUES

- BUTTER** Wildmere, Fresh Pound Print **81c**
- EGGS Sunnybrook Med. Size Doz. **65c**
- CHEESE Borden's Cheddar 1/2-Lb. Pkg. **29c**
- SWISS CHEESE Wisconsin Lb. **75c**
- GOUDA CHEESE Rich and Mellow Lb. **59c**
- CHEDDAR CHEESE Wisconsin Mild, Sharp Lb. **61c**
- CHED-O-BIT Cheese Food 3-Lb. **89c**
- MARGARINE Keyko Lb. Ctn. **39c**

Sweet Buys in Sweet Yams

- Porto Rican **3 Lb. 35c**
- Big, firm and flawless, these sugar-sweet yams are grand...baked, mashed, candied, boiled or fried. And at A&P's modest price they're grand values, too!
- FLORIDA ORANGES 8-Lb. Mesh Bag **49c**
- HOT HOUSE TOMATOES Small Size Lb. **25c**
- CELERY HEARTS Michigan 2 bundles **25c**
- HEAD LETTUCE 60 Size 2 for **29c**
- MAINE SUPER SPUDS 10-Lb. Mesh Bag **65c**
- GOLDEN RIPE BANANAS Supply Limited Lb. **14c**
- ENGLISH WALNUTS Lb. Cello Bag **45c**
- SANTA CLARA PRUNES 2-Lb. Bag **39c**
- FRESH DATES California 8-Oz. Pkg. **19c**



GROCERY VALUES

- CATSUP** Packers Label 14-Oz. Btl. **15c**
- CORN Trella Whole Kernel 2 1/2-Oz. Cans **25c**
- IONA PEAS 3 1/2-Oz. Cans **29c**
- COMET RICE Long Grain White 2 1/2-Oz. Pkg. **33c**
- OLIVES Sultana Stuffed 6 1/2-Oz. Btl. **39c**
- CORN Great Northern Cream Style 2 1/2-Oz. Cans **23c**
- CRANBERRY SAUCE Ocean Spray 16-Oz. Can **21c**
- FRUIT COCKTAIL Sultana 28-Oz. Can **39c**
- SALMON Cold Stream Fine 16-Oz. Can **45c**
- CHERRIES Liberty Maraschino 4-Oz. Btl. **15c**

Delightful for Pies
A&P Pumpkin
29-Oz. Can **10c**

- HORSERADISH Forbes 6-Oz. Btl. **13c**
- WINDOW LITE 16-Oz. Btl. **9c**
- SHOW-YOU SAUCE Oriental 6-Oz. Btl. **20c**
- COCOA Nestle's Borden's 1/2-Lb. Can **25c**
- ASST CEREALS Sunfields Individual **27c**
- MILK Whitehouse Evaporated 2 1/4-Oz. Cans **23c**
- PRETZELS N.B.C. Thin 7 1/2-Oz. Pkg. **19c**
- BEANS N.W.P. Boston Style 2 1/2-Oz. Cans **23c**
- SARDINES Van Camp's Tomato Sauce 1 1/2-Oz. Can **25c**

Brath's Chocolate Covered
CHERRIES
Pound Box **79c**

Bloomfield Theater Announces First of Annual Carol Singing Contests

The Bloomfield Theater today announced plans for Birmingham's first carol singing contest, to be conducted in co-operation with the Birmingham Eccentric. Any singing group is eligible to compete and cash prizes will be donated by the theatre to the winners group, either to use for its favorite charity or for work among its own membership. In the cases of church singing groups, as an example, the Carol singers may wish the money to go to the church. Auditions will be conducted in the theatre lobby on successive Wednesdays, with finals on the theatre stage on December 28. Groups desiring to enter may use the attached coupon which should be mailed or delivered to the Bloomfield Theatre, not later than Thursday, December 20. Will Be Notified. Singers will then be notified their leaders, or group co-ordinators when and where to appear at preliminary auditions. The winners in each competing group will then be screened the finalists. It is suggested that groups entering fill out the attached coupon without delay in order to be considered for placement in the contest. This is expected to be the first of a series of annual community sing of the same type designed to foster community spirit.

I desire to enter my group in the Bloomfield Theatre Carol singing contest.

NAME OF ORGANIZATION _____

NUMBER IN GROUP _____

ADDRESS _____

NAME OF PERSON ENTERING GROUP _____

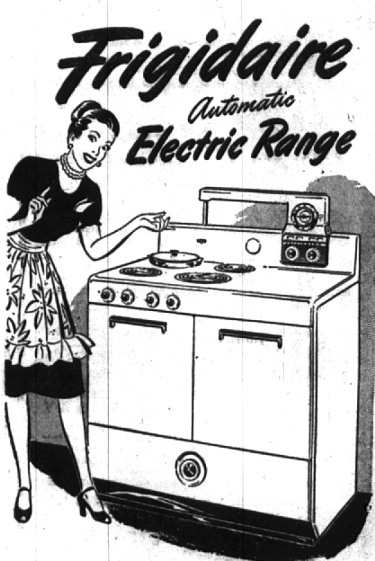
Lewis Furniture Company Opens

Leonard T. Lewis of Birmingham, and for the past 24 years proprietor of the Lewis Furniture Company in Pontiac, announced today that a branch store has been opened here at 235 Pierce Street. The location of the store is that of the new, five-story building completed last spring by Herrin Machus. Lewis stated that he has purchased the building from Machus and will utilize the entire 4,500 square feet of floor space for the display of furniture. Lewis has appointed August C. Shier to manage the new Birmingham store. Shier has been actively engaged in the furniture business for 35 years, part of this span being spent in manufacturing. For many years he also was active in the furniture retail field in Pontiac, both as a manager and owner of a store. Shier, whose home is in Pontiac, will be assisted in the operation of the local store by Keith Morgan of Pontiac. The Lewis stock will be composed of nationally known brands of furniture and will include furnishings for every room in the home. Appliances will not be handled, but a floor covering department will be a feature of the new store, Shier said.

Russian Choir Will Be Vespers Singers

Directed by Nicholas F. Sanft, the choir of Sts. Peter and Paul Russian Orthodox Church, Detroit will present a program of traditional Russian music at the Musical Vespers to be held at Christ Church, Cranbrook on Sunday, Dec. 7, at 4:30 p. m.

PLEASE, MAY I HAVE THIS FRIGIDAIRE RANGE FOR CHRISTMAS?



TWO COMPLETE
Electric Ovens \$339.75
Oven and Warmer Drawer . \$299.75

OTHER MODELS
\$187.75 - \$208.75 - \$249.75
FOR IMMEDIATE OR DECEMBER 24th DELIVERY

from...
CRAIG APPLIANCES Inc.
Birmingham's Exclusive Frigidaire Dealer

- Red Star, Foil-wrapped Yeast 2 Cakes **7c**
- Easy on the skin Olivolo Soap Cake **10c**
- LaChoy Bean Sprouts 2 1/2-Oz. Cans **25c**
- Strained Baby Foods Beechnut 3 1/2-Oz. Jars **25c**
- Gold Medal or Pillsbury Flour 10-Lb. Bag **\$1.03**
- Eight o'Clock Coffee 1-Lb. Bag **40c** 3-Lb. Bag **\$1.15**

