

Present Conditions Force Postponement of New High School for 4 or 5 Years

(Editor's Note: This is the seventh and last in a series of articles which The Eccentric has been presenting in an effort to bring to the citizens of Birmingham the present financial situation of Birmingham and its members of the Birmingham Board of Education. In this last article, Mrs. Lewis B. Sappington, a board member, discusses what must precede the construction of the proposed new city high school.)

By Mrs. Lewis B. Sappington
Member, Birmingham Board of Education

Many persons are asking when the new high school is going to be built. They realize the inadequacy of the present high school facilities to provide for a reasonable program in health and physical education, intercollegiate sports, homemaking, art, industrial arts, speech arts, and other important curricular activities associated with a modern high school program.

It is with regret that the Board of Education must announce the postponement of any construction of high school facilities for a period of four or five years because of circumstances at the present time do not favor such construction.

More Urgent Needs
In the first place, there are other building needs that are more urgent than the new high school. The present rate is being noticed in the elementary schools at the present time. Additional classrooms are sorely needed at Pierce, Franklin and Quarten Elementary Schools.

A cafeteria at Barnum Junior High School is also desperately needed to avoid the confusion of serving approximately 300 children during the noon hour in the gymnasium and preparing the food for the noon lunch in the home-making laboratories.

A second reason for deferring this work until a later date is in the high cost of construction and the shortage in building materials. It is not a logical time to expand the educational facilities beyond the present demands such as exists in the elementary schools.

Five-Year Limitation
A third reason is the fact that the present debt will be liquidated within the next four years and Birmingham will then have a clean slate with which to begin a building program sufficient to build a modern secondary school. The fourth factor which affects the problem is the five-year constitutional limitation placed upon bonding. It would be impossible for Birmingham to liquidate the

cost of a new secondary school within a period of five years without creating an undue burden upon the taxpayer.

Will Continue Study
This is not a situation peculiar to Birmingham. It prevails throughout the state, and all school buildings erected in Michigan are paralyzed in Michigan until some way is provided to extend the payment of bonds over a longer period of time.

Will Continue Study
In spite of these financial difficulties, the Board of Education plans to continue its study and some day provide in Birmingham the kind of a secondary school which the young people of this community should have.

Tentative plans for this new school provide large, airy classrooms along the Lincoln Boulevard building facing Lincoln Boulevard. These classrooms will house the English, social studies, mathematics, and language departments. In the center of this structure the library will be located, so as to be easily accessible to all of these academic classrooms. The corridors will have natural lighting and will be wide and spacious.

A wing to the north from these classrooms will house the home-making department on the first floor and the drama department on the second floor. Continuing to the north will be the fine arts department, and then comes that portion of the building which will house the arts and sciences.

Plan Beautiful Auditorium
The auditorium is particularly beautiful in location and destination and should become the cultural center for Birmingham. It is accessible without interfering with the school program and can accommodate the largest orchestra, concerts, choir concerts, and other activities of the school.

It is also sufficiently large, with 2,100 seats, to make it possible for Birmingham to enjoy concerts, lectures and other activities which the people of this community enjoy and at present have to travel to Detroit to see and hear.

An adequate cafeteria not only provides lunch facilities but also provides a delightful place for the social affairs of the school. It can operate in the evening without requiring the use of the remainder of the school plant.

Asset to Community
Last, but not least, is the gymnasium which in sufficient large to accommodate both boys' and girls' classes in physical education throughout the day. By means of folding doors, the entire gymnasium can be converted into a single gymnasium adequate for intercollegiate athletics and making it possible for Birmingham to even have some of the basketball tournaments here.

Adjacent to the gymnasium are the showers, dressing rooms, health rooms, corrective rooms, store rooms and other facilities which are required in a modern high school.

This school would change and improve the character of the entire community and would be an asset to every citizen who would point to it with pride. Even though circumstances should prevent the immediate construction of this plant it is the hope of each member of the Board of Education that the citizens of Birmingham will keep this project fresh in their minds even though, in the meantime, other more pressing needs must be taken care of.

By voting "yes" on May 5th you can provide the necessary funds to expand the elementary school facilities and meet the increased costs of salaries and materials for the new Birmingham High School.

Operations of U. S. domestic scheduled airlines in 1946 resulted in only 73 deaths among 13,300,000 passengers.

OTTO HAZARD
DRINKING DOES MORE THAN OULL THE DRIVER IT'S LIKELY TO POLISH HIM OFF

288 E. Maple Road, Birmingham, Mich. Phone Birmingham 3304

Obituary

Berton H. Jackson

Berton H. Jackson, 507 W. Frank street, died at his residence last Thursday, April 17, after a lingering illness. He was 66 years old.

Born in Flat Rock, Mich., May 31, 1880, he married Maude A. Berry in Pontiac April 4, 1925. He came to Birmingham 43 years ago, and attended schools both in his native city and in this city. He was the owner of the Frank Street Garage.

Surviving are a son, U. Berton Jackson, and a daughter, Mrs. Dorothy J. Jackson, both of Birmingham. He also leaves a sister, Miss Goldie Jackson of St. Petersburg, Fla.

Funeral services were held Monday at the Bell Funeral Home with the Rev. W. Glen Harris of the First Presbyterian Church officiating. The burial took place at White Chapel.

Lavarence R. Brittain

Lavarence R. Brittain died following a long illness at Brent

Will Learn Latest Production Methods

Chicago headquarters of the international technical society. "Shortages of foundry industry raw materials and mounting costs have forced unusual operating practices, the use of materials not normally employed, tighter controls and many process improvements, and this situation will be reflected in an overflow attendance at the shop practice sessions, 7 S. C. Massari, the society's technical director, pointed out.

"These sessions," he added, "are informal, of the record discussions, designed to present the newest in production techniques and promote free interchange of practical information on industry-wide problems."

No Time Limit
A one-hour parking restriction applying to the east side of Woodward between Euclid and 32d N. Woodward was removed Monday night by city commissioners upon the recommendation of Police Chief John P. Hackett and City Manager D. C. Robert.

Since one-hour parking had been imposed on that area, it was reported that people seldom used it, finding it more convenient to park nearer the downtown area where parking space appears to be adequate.

Will Learn Latest Production Methods

Birmingham area foundries are expected to have a stable representation of technologists and production men at the shop course sessions of the 51st annual convention of American Foundrymen's Association, opening in Detroit next Monday (April 28) to run through May 1, according to

of the Birmingham branch of the Detroit Edison Co. She was a member of the First Methodist Church, and was recently Rev. Arnold Runkel's secretary.

Surviving are her father, the Rev. Arthur A. Wall, two brothers, Arthur G. of Detroit and Fred T. of Troy Township, five sisters, Mrs. Florence E. Wall of Birmingham, Mrs. Blanche O'Hara of Tucson, Mrs. Emily Coffin of Marblehead, Mass., Mrs. Nellie Jones of Ogden, Utah and Mrs. Lydia Sheppard of Oak Park, Ill.

Services will be held today at the Bell Funeral Home at 3:00 p. m. The Rev. Arnold Runkel officiating. Burial will be in Clark-

Ruth C. Wall
Ruth C. Wall, 32, 456 Park street, passed away Monday, April 21, at the residence of her sister in Tucson, Ariz.

Born in Central Lake, Mich., Miss Wall lived in Birmingham for the past 23 years, where she worked in the accounting office

Bowling Scores

JUNIOR HOUSE LEAGUE
April 9, 1947

Player	W	L
Accurate Foundry	32	24
Permalite Corp.	29	27
Thompson & Gowling	28	28
Walnut Lake Service	25	31
Mills' Auto Supply	22	34
Thurston & Laid Service	22	34
Kelley Peters	21	35
Birmingham Ford	21	35
Chickie Stand Bar	20	36
Sargent & Bird	20	36
Oak Cleaners	17	39

Weekly High
Ind. High (1) 1st - W. Fish and B. Frisco, 225 (1) same - J. Greshy, 226
Team High (1) same - Mills' Auto Supply, 214 (1) same - Accurate Foundry, 245.

BIRMINGHAM MERCHANTS LEAGUE
Birmingham Recreation, April 16, 1947

Club	W	L
Great Cola	54	32
Proctoring	47	39
Birmingham Ford	44	42
Becks	40	46
Birmingham Recreation	36	50
Facilities Mrs. Co.	25	65
Adams The Florist	24	62
Goebel	24	62
Serub	24	62
Line Cuts	23	63
Lake The Jeweler	21	65
Lake The Jeweler	19	67

Weekly High
Ind. High (1) - B. Bowen, 231 (1) - B. Bowen, 226. Team High (1) - Simpson's, 211 (1) - Simpson's, 211.

LADIES ALIBI LEAGUE

Friday, April 11, 1947

Player	W	L
Maxwell Shon	30	40
W. W. Control Corp.	27	43
Mayfield	24	46
Co-Continuity	24	46
Charles' Institution	24	46
Janis' G. G. Shon	24	46
A. W. Y. Bell	24	46
Ann's Laundry Shop	24	46
Alber Tool & Cases	22	48
Edwood Electric	22	48

LADIES HOUSE LEAGUE
April 14, 1947

Player	W	L
Strain's	41	31
Triangle Engineering	41	31
Albin Book & Gift Shop	41	31
Jay Shon	41	31
Flam Hoopery	41	31
Borden & Bird	41	31
McKells Jewelry	41	31
Mrs. Beauty Salon	41	31
William's Book Shop	41	31
William's Book & Gift Shop	41	31
Mills' Auto Supply	41	31
Burr's Shoes	41	31

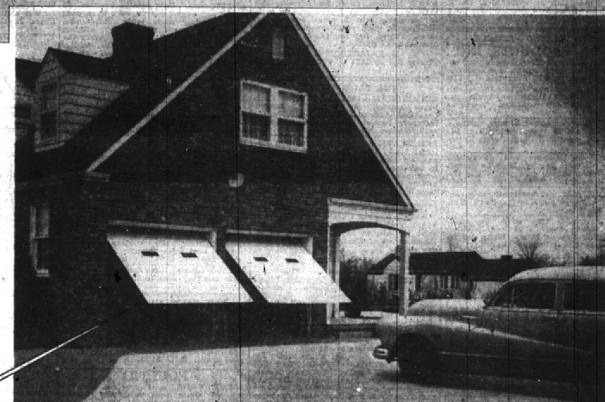
Weekly High
Ind. High (1) - B. Bowen, 231 (1) - B. Bowen, 226. Team High (1) - Simpson's, 211 (1) - Simpson's, 211.

Twenty-four per cent, or 450,000 acres, of all the land in the U. S. is in Federal ownership, according to a report submitted to Congress by the Committee on Public Lands.

You are invited!

... FRIDAY, APRIL 25th

First Public Demonstration of the REVOLUTIONARY New ELECTRONIC SERVICEMAN



(Operates Door Within a Radius of 75 to 80 Feet)

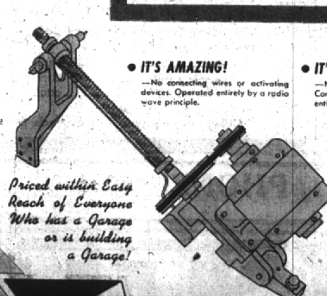
GARAGE DOOR OPERATOR

Opens and Closes Garage Doors by an Entirely NEW and STARTLING Radio Wave Principle!

Entirely new! The Garage Door Operator, midget in size, that does a giant-size job. It opens and closes garage doors with a basic, foolproof electronic principle that is built-in, safe, swift, silent! Installation is quick and easy, summer or winter. Just five screws secure the doorlift and motor unit to the inside garage wall ... out of the way, almost out of sight. It can't bind or jam, because it is always in perfect alignment. A compact electronic transmitter—installed under the car hood and connected to a button on the dash—activates the operator instantly. Best of all, it's priced within easy reach of every home owner or home builder! Don't miss this big attraction this week-end.

DON'T MISS IT!
AT OUR SHOWROOM!
288 E. Maple Road, Birmingham, Mich.
AT THE BUILDERS' SHOW!
Convention Hall on Woodward Avenue

See these actual garage door installations with remote finger-touch control of entire operation—vivid demonstrations of foolproof safety features and complete electronic principle.



Priced within Easy Reach of Everyone Who has a Garage or is building a Garage!

IT'S AMAZING!
—No connecting wires or activating devices. Operated entirely by a radio wave principle.

IT'S SIMPLE!
—No overhead rails, springs or shafts. Complete unit encased at side of door, entirely out of the way.

IT'S EASY TO INSTALL!
—Requires but five screws to secure complete unit ready for operation.

AMBASSADOR DISTRIBUTORS, Inc.

288 E. Maple Road, Birmingham, Mich. Phone Birmingham 3304

MINI-MIMOGRAPH
Job Printing
Typing & Mail Preparation

Telephone 2955
Piety Hill Press
11 Ravine Street
Birmingham, Michigan

YOUR CAR IS BEING WRECKED FROM BELOW

UNDERSEAL
RUBBERIZED PROTECTIVE COATING

Keeps underbody destruction of rust, corrosion, warp, Every mile you drive, the underbody of your car is being attacked by flying rocks, gravel, corrosive road chemicals. They cause rust, rot, fenders, make your car rattle and squeak. Your car is protected "UNDERSEAL," the new sprayed-on coating that repels rocks, rust, corrosion, and muffles body noises. It keeps your car quiet-riding longer. It's guaranteed to protect for the life of your car.

HAROLD TURNER
AUTHORIZED FORD SALES AND SERVICE
464 S. Woodward
PHONES 3650 and 3651 and Elmhurst 5984

DRINKING DOES MORE THAN OULL THE DRIVER IT'S LIKELY TO POLISH HIM OFF

288 E. Maple Road, Birmingham, Mich. Phone Birmingham 3304