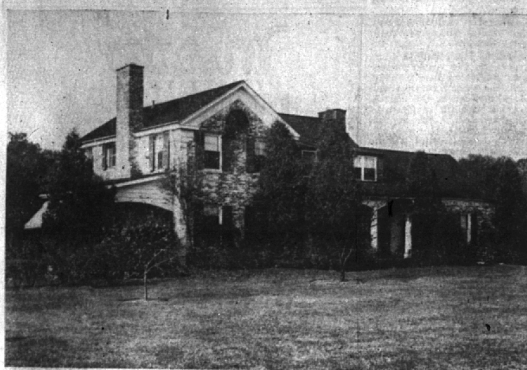


## Early American Farmhouse . . . Near Gilbert Lake



In unusual degree the exterior of this attractive Bloomfield home reflects the true early Michigan farmhouse feeling. Some of the most picturesque countryside is in the Gilbert Lake section and the one acre setting, so nicely landscaped, gives an air of spaciousness which serves to keynote the interior.

First Floor—Living Room, 16 by 26, Library, 14 by 16, Dining Room, 15 by 14, Breakfast Room, Lavatory, Kitchen and large Living Porch overlooking the garden. Tool Room and attached 2 car garage.

Second Floor—4 comfortable family Bedrooms and 2 nicely tiled Baths, plus large servant's Bedroom and Bath. Service stairway to maid's quarters, Basement—Recreation Room, Boiler Room (new stoker), Laundry and fruit Rooms. Total annual taxes \$160. Vaughn School District.

Here is an opportunity for country living at its best not often equalled. Full use of Gilbert Lake for swimming and fishing come with the property and immediate possession is possible. The price of \$37,500 is below reproduction or market value. Inside and out, it's in like-new condition. Call us today—

CALL  
**MAX BROOCK INC.**  
**REALTORS**  
ESTABLISHED 1892  
300 S. Woodward Birmingham 1212

## The Birmingham Teachers' Club

urges you to take advantage of your opportunity to guarantee a more adequate financial support of the educational program for Michigan's ONE MILLION school children.



**VOTE YES ON AMENDMENT TWO**

## NEWS! HOUSING HEADED FOR DECONTROL

Good news for home-planners! Housing, too, is headed for decontrol! Current predictions and reports to this effect are based on (1) President Truman's recent order to speed-up the entire decontrol program, (2) drastic reductions in the export quotas for lumber and wood products and (3) authorization of tariff-free lumber importations.

With these indications of restriction-free building in the not too distant future, it's a good idea to buy the site for the home you plan to build . . . to buy it now . . . while existing controls hold land values down.

Houseman-Spitzley Corporation is offering a wide selection of choice home-sites in the Birmingham area. Reasonably priced, too. In *Devon Hills*, from \$850 to \$2550; *Birmingham Highlands*, from \$900 to \$1500; *Birmingham Hills*, from \$850 to \$1300; *Pembroke Manor*, from \$400 to \$700; *Birmingham Gardens*, from \$350 to \$650; and half-acre plots in *Greenway Estates* from \$600 to \$775.

For complete information regarding these developments call

**HOUSEMAN-SPITZLEY CORPORATION**  
**REALTORS**

14 Mile and Southfield  
Phone B'ham 4463

Telegraph and W. Long Lake  
Phone B'ham 2390

## Bits of Birmingham

Miss Gunver Bergshagen, a senior at Michigan State College and daughter of Mr. and Mrs. Erik Bergshagen, 3520 N. Adams road, will interview George R. Averill, editor and publisher of *The Eccentric*, on policies and operations of a newspaper, the Wanderer learned this week. The Eccentric is one of several weekly Michigan newspapers which the MSC journalism department has selected for a study of newspaper management in order to acquaint journalism students with a knowledge of the background and policies of newspaper management.

Birmingham owners of collie show dogs are invited to enter their pets in the forthcoming Collie Specialty Dog Show sponsored by the Mid-West Collie Club. The show is scheduled for Sunday, Nov. 10, from 10 a. m. to 8 p. m. at the Hackett Field House in Highland Park.

The Wanderer last week received a copy of the first issue of "The Big Owl Hook," a two-page mimeographed news sheet for members of the Adams School Pack B-8 Cub Scouts. Writer-Editor Robert G. Silbar is responsible for the new publication. From the first issue, it appears that it will be a strong impetus to activities of the cub pack.

E. T. Engel, for 15 years a teacher in Birmingham schools and now superintendent of schools in Roscommon, Mich., writes the Wanderer this week that his son, Fritz, was the first boy in the history of the Roscommon high school to bag a deer with a bow and arrow. The kill of the spotted buck, Ernie says, was effected from 46 yards last Tuesday morning, Oct. 22.

Birmingham merchants take note: the Wanderer the other day encountered on West Maple a Pontiac woman acquaintance who finally owned up to the fact that she was in Birmingham to make a purchase she couldn't get in Pontiac. Our trading area seems to be extending itself.

At some future date—the exact time is unknown—all merchants from those in the biggest cities to those in the smallest towns, will undoubtedly install on their premises a cold water drinking fountain. The Wanderer this week happened to be talking with a Birmingham woman who consistently shops in Detroit and she said, "It's certainly refreshing to stop by and get a drink of nice, cold water at the fountains strategically placed throughout one of Detroit's largest department stores. I really pop up weary shoppers."

The Wanderer doesn't suppose that the Irish setter actually walked into a Birmingham bakery for its "dessert" but the poob for was seen crossing West Maple avenue with a fresh, chocolate cup cake clenched firmly in his teeth. Must have found a bonanza in the Maple alley.

The Wanderer notes that new headquarters for Mr. and Mrs. McNeel, owners of The Birmingham Fair, Glass & Mirror Company, are almost ready for occupancy and a formal opening. The new store, we understand, was built on the site of the old Mudge residence, which before raising was said to be in the neighborhood of 150 years old, and the oldest house in Birmingham. Mr. and Mrs. McNeel say they will have twice the room in their new store and will take all visitors on a personally conducted tour premiere night, Friday, Nov. 8.

Many phone calls have been coming in to *The Eccentric* asking if we knew on what date Thanksgiving was this year. The Wanderer investigated and discovered that it had gone back to the 28th day of November, which makes it this year. President Truman appears to have abandoned one of the late President Roosevelt's practices of moving Thanksgiving up one week.

The family of the late George McHugh has asked the Wanderer (Continued on Page 2, Part 2)

**Birmingham**—NEAR SCHOOLS AND TRANSPORTATION. Excellent location for family desiring best neighborhood. Spacious living room, screened porch, 4 bedrooms with ample closet space.  
Price \$19,500.00

**ATTRACTIVE BRICK HOME IN BLOOMFIELD VILLAGE.** Center hall, living room, sun room, breakfast room, kitchen, lavatory on 1st. 3 bedrooms, 2 baths and attic storage. Screened porch and terrace. Recreation room with tile floor, oil heat, slate roof.  
Price \$26,000.00

**NEAR ORION, ON PAVED ROAD—REMODELED** white farm house on 5 acres, beautiful shade trees, orchard and barn. Home in excellent condition, including glassed and screened porch. Living room, library, large dining room and kitchen. 4 bedrooms and bath on 2nd. Forced hot air heat.  
Price \$15,000.00

Call for details and appointment.

**Walsh, James & Wasey Co.**  
DETROIT, BIRMINGHAM, BLOOMFIELD HILLS, LADDER, ROCHESTEER, NORTH BIRMINGHAM, GREENWAY ESTATES  
Main Offices . . . . . Grandview Bldg.

Call Birmingham 1250

431 S. Woodward Avenue

## WHAT LIES AHEAD DEPENDS ON YOU

If and when a depression follows the good times we are enjoying, the man who has had the foresight to save money now will then be able—

1. To tide himself and his family or business safely through the emergency, and
2. To profit from buying bargains at depreciated values.



You can be prepared for whatever lies ahead—by opening a savings account here and adding to it regularly. Come in, won't you?

**BIRMINGHAM FEDERAL**  
SAVINGS AND LOAN ASSOCIATION  
Woodward at Maple  
Member of Federal Home Loan Bank System and Federal Savings & Loan Insurance Corporation

## JOYFUL LIVING



OAK STREET

Is a proper theme for this lovely home that is centered on a wonderfully landscaped and spacious site—185 x 200. Extensively remodelled from top to bottom only a few years ago—it has all the delights and comforts of modern equipment plus an air of gracious livability only an older property can provide.

First floor has a sun room, large center hall and screened porch and a deluxe G-E kitchen. *Upstairs:* 4 Bedrooms, dressing room, 2 baths. Third floor contains 2 bedrooms, a bath, also storage facilities. The 3-car garage answers the housing problem for children's equipment, tools, et cetera.

Exquisitely appointed and decorated, and immediately available for occupancy, we urge you to inspect this home . . . We know you'll want to own it.

**SNYDER BUCK & BENNETT**

239 S. WOODWARD

BIRMINGHAM 1400

## Double House . . .



2161 W. LINCOLN

Two Beautiful homes in one.

Each has 3 bedrooms and tile bath up.

Each has first floor lavatory.

There are separate oil furnaces.

There is a 4-car garage.

The neighborhood is the best.

Appointments for your inspection will be gladly arranged.

**HOEY, BENJAMIN and STEPHENS**

Realtors

259 S. Woodward

Phone 4129

Birmingham