

SIXTY-NINTH YEAR—NO. 29

BIRMINGHAM, OAKLAND COUNTY, MICHIGAN, THURSDAY, OCTOBER 10, 1946

\$2.00 PER YEAR (In Oakland County)—SINGLE COPIES, 5c

Complete ROOFING Service

by Experts

W. P. HICKMAN COMPANY

1360 E. Maple, Birmingham
21 Years Experience Phone B'ham 2080
Expert Roofing Know How

AWNINGS

SAVE 25%

ORDER NOW FOR SPRING DELIVERY BEFORE PRICES INCREASE GO INTO EFFECT

Orders Taken Now Include Taking Down and Storage for Winter at No Extra Charge.

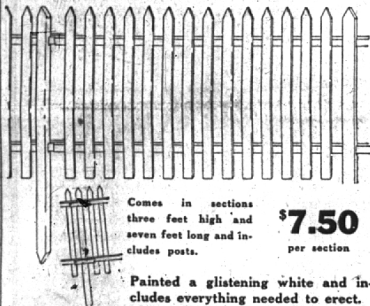
The Finest Quality Materials in Beautiful Stripes and Plain Colors, Available with Galvanized Steel Framework. Complete Awning Service Including Repairs. Call TY. 4-8579 for representative

TOLL and HENSON CO.

AWNINGS — TENTS — SAILS — COVERS — FLAPS
8781 GRAND RIVER

White Picket Fence

For Beauty and Utility



Comes in sections three feet high and seven feet long and includes posts. **\$7.50** per section

Painted a glistening white and includes everything needed to erect.

Protect your home & family



Decorative Picket Fencing

Comes in Sections, 6 ft. 10 in. in length **\$4.68** section

LAWSON & SON

484 Forest Phone 111
FUEL AND BUILDERS SUPPLIES

State Accounts For Taxes Spent

On page 4, part 3 of The Eccentric today appears an unusual advertisement.

Headed "An Accounting to Taxpayers," the paid message is from the State of Michigan through John D. Morrison, state auditor general. It is a handy report to Michigan taxpayers of revenues received and expenditures made by the State of Michigan during the past fiscal year ending June 30, 1946.

Mr. Morrison, who incidentally is not running for re-election, chose newspapers as the most effective and economical way to inform taxpayers about the state's financial operations and the current surplus.

The official report shows total receipts of \$304,118,039.36 and total expenditures of \$286,499,092.33, leaving a year's surplus of \$17,618,946.97. As the state began the year with a surplus of \$5,219,763.68, the unrestricted surplus in the treasury on June 30 that was available for legislative appropriation was \$22,838,710.65.

The above surplus does not include funds restricted by the legislature for future definite needs, such as the veterans' trust fund and others, and hence not available for legislative appropriation.

Local LWV Delegates Attend State Meeting

Birmingham will have delegates present for both sessions at the two-day meeting of the State Board of the League of Women Voters.

Delegates from the fifteen Michigan Leagues are scheduled to attend the meetings being held in Ann Arbor today and tomorrow.

Mrs. Charles Blunt, Mrs. Howard Livrance, and Mrs. Brooks Marshall will represent Birmingham for today's program.

A member of the National Board of the League of Women Voters, Mrs. Allen Mitchell of Bloomington, Ind., will attend this state session to consult with Michigan Leagues on plans for encouraging citizens to take an active part in government.

CLASSIFIED ADS must be at The Eccentric office by five o'clock Tuesday of the week you wish them published. You may phone or bring them in.

SUBURBAN WINDOW CLEANERS
ARTHUR ZETTEL
1619 Cole
Birmingham
Phone 2106

RALPH A. MAIN
CIVIL ENGINEER and SURVEYOR
Subdivision Design and Layout
Cemeteries, Lot Surveys
Wabash Bldg., Birmingham
Phone B'ham 721

RICH TOP SOIL, FILL DIRT, SAND AND GRAVEL

Prompt Service
Call
Pontiac 4-6242

ACME Window & House Cleaning Company

Phone 1162
424 PARK STREET BIRMINGHAM
"Oakland County's Oldest Window Cleaning Service"

Kim Sigler's Tokyo Headquarters



Lieut. Ray A. Hathaway of Hastings; Miss Norma Helston of Detroit, and Sgt. Joe Pleasch of Monroe in a Tokyo Army office which Sigler on occupation duty call "Sigler's Tokyo Headquarters."

Michigan's hot battle for governor extends as far as Tokyo where Michigan GI's have a "Kim Sigler Campaign Headquarters."

Lieut. Byron Slattery, Mr. Sigler's son-in-law, writes: "We're doing our best to get a solid KIM SIGLER absentee vote from the Michigan men and women on occupation duty in Japan."

Requests for absentee ballots throughout the state indicate keen interest in the campaign among service folks.

Mrs. Betty Slattery, Kim's daughter, is now awaiting Army travel instructions and expects to be with her husband in Tokyo before Christmas. Kim Slattery, the gubernatorial candidate's grandson, will also make the trip.

More of Birmingham's youth have joined the rank of enlistees, the local draft board reports, and they are: Christopher A. Lucas, Alan W. Joelyn, Jr., Amos F. Gregory, Jr., John M. Dalton, Anthony B. Baldwin and Robert L. Williams, II.

Philip T. Austin, the board reports is now in I-A, Peter Robjak, vityak is III-A, and Frank D. Mackaskill has been put in I-G.

New Enlistees

More of Birmingham's youth have joined the rank of enlistees, the local draft board reports, and they are: Christopher A. Lucas, Alan W. Joelyn, Jr., Amos F. Gregory, Jr., John M. Dalton, Anthony B. Baldwin and Robert L. Williams, II.

Philip T. Austin, the board reports is now in I-A, Peter Robjak, vityak is III-A, and Frank D. Mackaskill has been put in I-G.



All kinds of household goods are readily sold by use of Eccentric Classified Ads.

you see
HUGH C. WHITE AGENCY
217 PIERCE ST.
(Opposite Municipal Bldg.)
INSURANCE and BONDS of EVERY KIND
Birmingham 3302 Since 1920

KAUFMANN All-Aluminum

Sash and Screen Combinations
Beautiful
Easy to Operate
Lifetime of Service

KAUFMANN All-Aluminum Storm Sash for Steel Casement Windows
"Pella" All-Metal Venetian Blinds
Window Screens—Porch Screens
Porch Enclosures
Electrical Appliances See Them on Display

HOME EQUIPMENT CO.
PHONE PONTIAC 4-2597
1661 Telegraph Road • P. O. Box 196, Pontiac, Mich.
1/4 Mile South of Orchard Lake Road

Construction Cost Of New Vet Homes Reaching \$10,000

Veteran home building is being carried on in Birmingham quite extensively and expensively, according to Scott Hersey, building inspector. The "extensively" part of the statement will not be true for long, however, he reports, as shortages of materials and the expense of obtaining them have almost stopped Birmingham builders to start contracting to build new homes.

"The minimum amount of \$10,000 for which a veteran may build a home on a Government loan is being reached in most cases," he stated, "with only a few being built for \$7,500 to \$9,000. It is not due to increased building fees so much as the high cost of material and the length of time taken to get them."

"Supplies are tight. Lumber has been on the list of scarce materials, but in the last few weeks the supply has been better. Naturally, it's all green lumber."

"While at first I was dubious about the feasibility of using green lumber in new homes, those already constructed of it appear to be in good condition. My inspections prove that it is not as bad as it was predicted to be."

"Of course, most of the homes now being built are one-story buildings and the green lumber might not be as applicable for a two-story home," Hersey concluded.

Supplies such as plumbing equipment, rock lath, nails, etc. are the items that drive the builder crazy. He may have everything he needs all lined up, and then find that he is forced to be idle for a few weeks because nails don't come through.

Lumber has been on the list of scarce materials, but in the last few weeks the supply has been better. Naturally, it's all green lumber.

While at first I was dubious about the feasibility of using green lumber in new homes, those already constructed of it appear to be in good condition. My inspections prove that it is not as bad as it was predicted to be.

Of course, most of the homes now being built are one-story buildings and the green lumber might not be as applicable for a two-story home," Hersey concluded.

PUBLIC STENOGRAPHER
Typing — Mailing Statements
PHONE 2763
202 Krim Building
148 So. Woodward

INSURANCE - BONDS THE BIRMINGHAM AGENCY
CHAS B RANDALL
OSCAR P PETERSON

Insurance for Every Need
PHONE 840
1065 WOODWARD-BIRMINGHAM

WHEN YOU NEED INSURANCE

ANY KIND FOR LIFE OR PROPERTY

CALL OR SEE

James R. Mock

TOWNSEND 8-0715

B'HAM 1432

STORAGE FACILITIES

for your FURNITURE

Are Now Available In Our FIREPROOF WAREHOUSE
Phone 2112
POTTER MOVING AND STORAGE CO.

JOHN A. WHITTAKER

Building Construction Since 1914

GENERAL CONTRACTOR

Specializing in Alterations, Remodeling and Repairs

Serving Southern Oakland County

Residential and Commercial

Phone Lincoln 10410

How, About An

Asphalt Driveway

for Your Home?

We are equipped to construct an asphaltic concrete pavement (Blacktop) of a plant mix material that has been approved by the Michigan State Highway Department.

OUR REPRESENTATIVE WILL CALL UPON YOU FOR FREE ESTIMATE AT YOUR REQUEST.

Formerly the OXFORD ASPHALT COMPANY

Now Operating as a Birmingham Concern Known As the

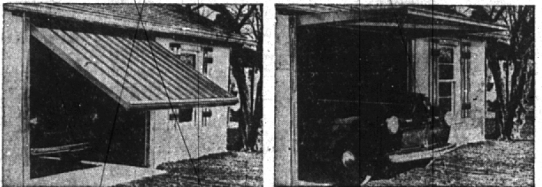
A & A Asphalt Paving Co.

1045 HAYNES STREET PHONE 3355

Asphalt Paving Contractors—Excavating & Grading

Available Now — In Birmingham!

Wilson Aluminum Door



Get a Modern Door for Your Garage—Check These Features of the New Wilson Easy Lift

- All-welded, one piece, heavy gauge aluminum.
- Easy to install on any standard 8 ft. by 7 ft. frame.
- Rust and vermin proof. No painting required.
- Dual lifting mechanisms lubricated for life.
- No exposed springs, weights, levers or balances.
- Easy operation with finger-tip control.
- Lightweight plus low cost plus long life.

Free Estimates

We'll install your Wilson Easy Lift for you. Give us a call and we'll be glad to inspect your present garage and to furnish you, without charge, complete installation costs.

Reid Door Company

444 West Frank St.

Birmingham, Mich.

Phone Birmingham 2644

Every 9th Family IN BIRMINGHAM

SERVISOFT

SOFT WATER SERVICE

ALL THE SOFT WATER YOU WANT

Without Investing in a Water Softener

Your savings more than pay the moderate monthly service charge.

Michigan Water Softening Service
259 FRANK ST. Phone 3307 BIRMINGHAM