

A great book, a great song, a great picture . . . of a great leader has done much to inspire and lead mankind from the jungle to more civilized areas of living. What our nation needs today are leaders who stand for the best in human thought; men and women who cannot be swayed from the course of intellectual honesty.

The Birmingham Eccentric

PART TWO

SIXTY-NINTH YEAR—No. 8

BIRMINGHAM, OAKLAND COUNTY, MICHIGAN, THURSDAY, MAY 16, 1946

\$2.00 PER YEAR (In Oakland County)—SINGLE COPIES, 5c

Cooperative Group Is Making Final Plans For Birmingham Store

The Birmingham Consumer's Cooperative Group at a meeting last Friday night agreed to for-

mally open a membership drive and accept consumer's share-capital investment. Miss Annie Laurie Mac Intyre of 720 East Maple avenue, Birmingham, is secretary-treasurer of the organization and will answer all queries and accept all investments.

Bits of Birmingham

Franklin Whitney, who for a number of years prior to his entry into the Navy during the war, was a teacher and basketball coach at Baldwin High School, was appointed Director of Health and Physical Education in Birmingham public schools by the Board of Education at its meeting last Thursday evening. Mr. Whitney, expected to be available before the school year begins next fall, will work with the board on a 12-month basis. According to Dr. Dwight B. Ireland, superintendent, Mr. Whitney will be available to direct future summer recreational programs.

The athletic program budget for 1946-47 was presented to the School Board last Thursday but the budget was returned to the Athletic Committee for consideration of lights around the parking area at Pierce Field. The Board felt that since the committee would have a good-sized surplus, even with the proposed expenditures next year, the lights could be afforded and would prove of inestimable value and profit. The athletic budget, as submitted, totaled \$6,523 for all sports.

The City of Birmingham is to have a big new tractor and two new snow plows for use in its snow removal program and other city work. The City Commission Monday evening placed an order for a heavy J. I. Case tractor from the Michigan Tractor and Machinery Company, and added an order for the plow, a Detroit mowing equipment and a power lift. City Manager D. C. Egbert told the Commission that the equipment would speed up many city jobs, now lagging because of lack of proper equipment, and that in winter snow removal would be handled more efficiently and with greater speed. The tractor is now available at the company's Traverse

City warehouse and the snow plows and other equipment are ready at the Wausau, Wisconsin, warehouse. It is expected total cost will be under \$2,000.

A water tap, left running wide open apparently from April, 1945, to the later part of March, 1946, has run the water bills at the Birmingham Country Club up quite a bit higher than normal. City Manager D. C. Egbert told the City Commission, Monday, in recommending that the arrangement for fire protection at the Club be continued for another year at the old rate of \$250 per year. The club had suggested an adjustment on its water bill and Mr. Egbert had been studying increased costs for fire protection. He suggested the old rate as a means of sharing in the costs of the water lost through the leak inside the club building.

"If you have a little extra cash why not send an extra contribution to the Birmingham Community House Fund?" This question is being passed around among folks of this region, this Wanderer is told, in an effort to speed up the fund campaign. Gifts as small as \$1 are very gladly received, we are told, and if enough of these come in the total fund will be boosted to the hoped for \$23,000. Those Birmingham, Bloomfield Hills, Franklin and other residents who have been working on the campaign say things don't look any too good right now. But, they declare, "a few liberal gifts and a lot of small ones will change the picture a lot in a very short time. Do it now!"

Oak street residents are to be offered some new plan for improving their street as soon as present studies are completed and the city engineering department can draft the plans into shape, according to word to this Wanderer from the City Commission. At a recent hearing on the first plan offered residents declared they did not want their street modernized; that they hated the bumps and holes; and that paving the street would tend to increase the traffic hazard. So Monday night the Commission rescinded three previous resolutions covering the proposed improvements. When ready with a new one another hearing is to be called.

Because two members were absent and one of the remaining five giving a negative vote, the plan to install a sewer main on Maryland boulevard has been rescinded by the commission. It seems, according to word to this Wanderer, that five affirmative votes of the commissioners-elect are required to pass a special assessment to defray cost of any public improvement. The vote on the water main plan was four to one. The vote on the sewer project was OK, with the five necessary affirmative votes. Under the new start the first hearing on the water main improvement proposal will be on Monday, June 17.

"How much coal have you on hand?" the query sent to Birmingham last Friday by Cap. Donald S. Leonard, state director of civil defense, was heard rounding up information for use in the coal crisis. "Check your stock piles, public institutions and such, and let me know at once," he asked by telegram to Chief of Police John P. Hackett, Birmingham director of civilian defense. Chief Hackett found the public schools and the city buildings had enough coal on hand to carry them through seasonable weather until the warm days of early summer. Holy Name School uses oil in its

furnaces so is not too much worried over the coal strike. Chief Hackett said that a survey of local coal yards disclosed only about 600 tons of coal on hand.

"Take It Easy" is a new slogan being suggested for motorists, especially those who have developed a tendency toward speeding. The slogan is being offered by various safety groups.

If you haven't voted in the last two school elections, and you desire to in the one coming up June 10, better tie yourself to the Board of Education office before June 1 and re-register. Otherwise you'll be out of luck. And those persons who now become eligible because of the recent change in voting qualifications must observe the same registration deadline. This Wanderer learns that registrations are coming in pretty slow these first few days. However, there will undoubtedly be the usual rush come deadline time, and we'll bet more than a few will miss the boat.

Quite a crowd of citizens visited the City Commission on the occasion of the Monday evening session, coming in connection with quite a lot of interests. Some wanted to know the city's plans for building a fire department station out West Maple way while others wanted to know about street improvements they had been asking about for some time. Others were there to hear about veterans' housing and still others for matters they considered of vital importance. Commissioners said they handled a wide range of items and that most citizens appeared to have had their inquiries satisfactorily answered.

Police report to this Wanderer that there have been two cases of attempted robbery of Birmingham stores in the past week. Last Saturday morning, they say, someone tried to break into the H. Way Furniture store on South Woodward and that on Thursday night or early Friday morning an attempt was made to rob the Oldsmobile Sales and Service, also on South Woodward.

The proposed improvement of Henrietta street is going to be handled as two separate undertakings, this Wanderer learns, one caring for that section already built up to single family residences, and the other to cover the north area where there are fewer homes and where considerable excavation will be necessary to install water and sewer connections. The southern section will be paved with gravel and blacktop, with curb and gutter, according to a resolution passed by the City Commission, Monday. The remaining section will get curb and gutter and gravel. Later on the area will get a blacktop pavement. Several residents have petitioned the Commission for the improvements proposed and hearings have been called for June 10.

(More BITS on Page 1, Part 3)
NEWS COPY that is submitted early for publication each week is necessary given preference over late items. Some "early bird" gets the space.

SPRAYING
ORCHARDS, SHADE TREES AND SHRUBS
TREE SURGERY
We Also Spray Lawns for Dandelion and Weed Control
We Use the Latest Weed Spray
Michael J. Jasso
Phone Big Beaver 147
Route 4, Birmingham



IN HARROWGATE . . .

THIS TYPICALLY COLONIAL HOME, built in the late thirties, has all the efficient economies you'd expect from modern construction. The floor plan and center hall arrangement was planned to save steps.

Properly proportioned for the average family, the second floor offers 4 bedrooms and 2 baths with a library and lavatory on the first. The living room provides special privacy because it spreads across the back of the house and looks out upon the nicely landscaped grounds.

Quarion School is easily accessible from this fine district—in fact, it's only 3 blocks away—and the Barnum bus for Junior High School practically goes by the door.

Best of all—you can move in this summer.

Appointments for inspection are requested by the owner.



SNYDER BUCK & BENNETT
INC.

THEATRE BUILDING BIRMINGHAM, 1400

We Repeat . . .

the time to buy is now! True, many who had planned to build in the immediate future have received a jolt by the drastic building restrictions recently announced. And, it is also true, that many of those plans are now at a virtual standstill.

Yet, this does not hold true with property values. Steadily and perceptibly they are increasing. The time will come when you will once again be free to go ahead and build as you wish. When that time comes, will you be among those who have obtained their property at today's prices . . . or will you be one of those for whom a suddenly increased demand will force payment of premium prices? The answer is up to you.

With this in mind, we strongly urge you to investigate these beautiful and distinctive properties. They are Bloomfield Hill's newest . . . and all are within easy access of the city.

"Lochslea" "West Lochslea"

With frontage on Lower Long Lake or Island Lake

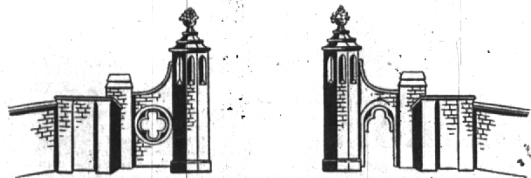
"Forest Park Estates"

North shore of Lower Long Lake and Forest Lake

"Forest Lake Country Club Estates"

West of Franklin Rd., South of Square Lake Rd., Adjacent to Forest Lake Country Club

Complete details, plat plans and restrictions are available. See your broker or call us for particulars.



Edwin S. George Foundation
BLOOMFIELD HILLS PONTIAC 2-9491

There's More Than One Way . . .

TO GET A HOME! In these days of scarcity we've been able to arrange several exchanges to the owners' mutual satisfaction. Smaller homes for larger—or vice versa—we suggest that you call us at once and tell us your requirements, for we have a list of possible exchanges here that may solve your problems. Some are new and some are older but there's no obligation involved and it may be the perfect way to suit your needs. Do it today!

CALL

MAX BROOCK INC.
REALTORS
ESTABLISHED 1891

112 S. Woodward Birmingham 1212

CALL ONE OF THESE Home!

Close to Woodward. This three bedroom residence offered at low price. Quick occupancy ----- \$ 7,950

On One Acre. 1941 built home with two bedrooms and unfinished upstairs. Owners will allow for decorating. Just three miles from Birmingham. Near School ----- \$ 8,900

Move in Soon. 1941 built, four bedroom Bungalow. Beautiful wooded street. Automatic oil heat and hot water heater. Could not be replaced for less, including property and completely fenced in yard. ----- \$10,000

In Construction. On one acre of ground with apple trees. Three bedrooms, tile bath, natural fireplace, knotty pine-paneled den with picture window. Large kitchen, full dining room and utility room and radiant heat ----- \$11,000

Walnut Lake. We have three homes for sale at Walnut Lake. For information, call Mr. Redmond. Priced to fit your pocketbook.

Clawson. Have a 2-family in good condition. Can be bought for \$3,000 down. \$ 7,000

For GI's. Have two double houses near community house, on paved streets and wooded lots. Priced at ----- \$13,000 and \$13,750

If your Want is to be out, we have two offerings, one at Wing Lake and one at Pine Lake for your inspection. Both are excellent year around homes.

In Adams Section. Beautiful, 5-bedroom, 3-bath Early American Brick Colonial Residence. In excellent condition and situated on a nicely wooded lot, it affords the best for the large family. Automatic heat, attached 2-car garage are two of its many features. ----- \$27,000

Franklin Village. Excellent new listing on three acres of ground, completely landscaped. Can be bought furnished or unfurnished. Three bedrooms, two baths, attached two-car garage. Featured is a studio den off a breezeway, paneled, and beautifully appointed with leather furniture, and huge natural fireplace. You will want to see this one.

A Country Gentleman's Estate

Close to Birmingham on Rouge Valley

Beautifully kept home in a setting of big trees, orchard and garden. Two guest houses and barn. The 80 acres include some timber. We invite your inspection of this very interesting property. Price \$75,000.00.

Attractive Grey Shingle House

In a good neighborhood, convenient to schools

Living room with fireplace, library, sun room, dining room and modern kitchen. 2nd, 4 bedrooms, excellent closet space, tile bath, basement laundry, gas heat, extra room with shower and jet. Good garden space. 2-car garage. Prompt possession. Call for appointment.

Also

Complete coverage of Birmingham-Bloomfield properties

HOMES — SITES — ACREAGE

Walsh, James & Wasey Co.

2801 ST. BIRMINGHAM, BLOOMFIELD HILLS, PONTIAC, MI
1000 N. W. CORNER OF 10TH AND 11TH STS. BIRMINGHAM, MI

431 S. Woodward Ave. Birmingham 1250

259 S. Woodward

HOEY, BENJAMIN and STEPHENS
Realtors

Phone 4129

Birmingham