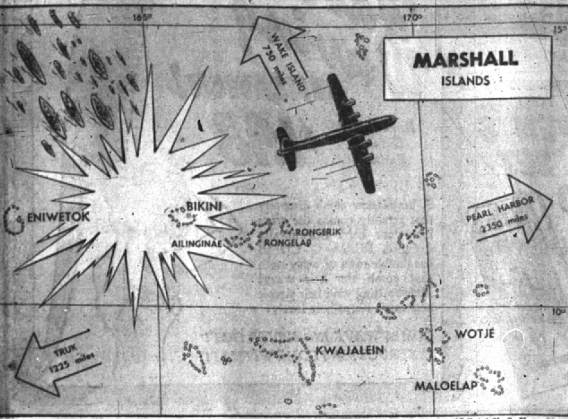


# Army and Navy Ready For July 1 Experiment

## TARGET AREA FOR ATOM TEST



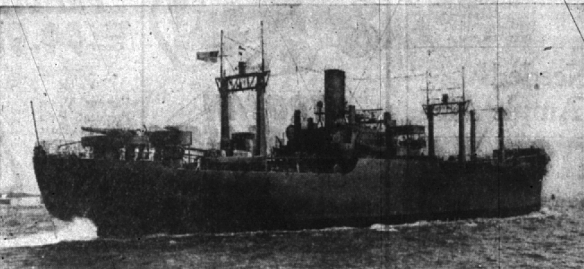
(Official U. S. Navy Map)

**THE MARSHALL ISLANDS** showing Bikini Atoll, and the near islands of the group. Here at Bikini, the "Crossroads" Commanders will direct the first "blast" of the Atom-bomb against unmanned ships and shore installations. Approximately 97 ships of all types will be anchored within a two-mile radius of Bikini lagoon, with the battleship Nevada in the very center painted a bright orange to aid the atom-shipboarders.

## THEIR JOB—TO SUPPORT TARGET SHIPS, CHECK RESULTS

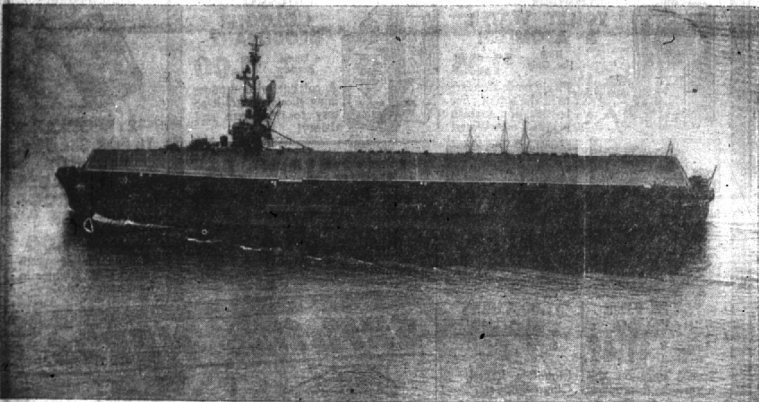
Ships such as these pictured below will be among the support units which will check the results of the coming Atomic bomb tests at Bikini Atoll, in the Marshall Islands. Known as "Operation Crossroads," the tests will be conducted by an Army-Navy-civilian unit known as Joint Task Force One, in the first weeks of May and July.

These ships, representing the major types of the support group, will service and repair the target ships, and will carry the observers to the scene of the tests.



Official U. S. Navy Photograph

**SUBMARINE-tender, the USS Fulton**, is another of the ships which will repair and service the ships of the target fleet. This sub-tender and other craft like her, serviced submarines during the war, making it possible for them to operate almost continuously in the forward areas. The Fulton will be among the support units anchored about ten miles away from the test-area to check the bomb damage.



Official U. S. Navy Photograph

**CARRYING** planes to observe and record the results of the tests will be the escort carrier USS Saldor, one of two carriers in the support units. Planes from the Saldor will be used to check the Atom-bomb damage. The Saldor along with other escort carriers operated throughout the war, screening amphibious landings, and carrying the planes that downed many an enemy ship in battle on the seas.



(U. S. Army Signal Corps photo)

**CHIEF** of the Army Air Forces to be used in the tests is Maj. Gen. Anthony C. McAuliffe, USA. Maj. Gen. McAuliffe served in this war with infantry, artillery, and airborne units.



(Official U. S. Navy photo)

**COMMANDER** of the Task Force is Vice Admiral William H. P. Blandy, USN, Deputy Chief of Naval Operations for Special Weapons. Vice Admiral Blandy, of Washington, D. C., has served in the Navy from the Vera Cruz Campaign in 1914 through both World Wars.



(Official U. S. Navy photo)

**TARGET** Fleet Skipper is Rear Admiral Frank G. Fahrius, USN, of Raleigh, N. C. Rear Admiral Fahrius, who is Commander of the Naval Group, has served throughout both World Wars.



(Official U. S. Navy photo)

**"WEAPONER"** who made history with the first Atomic bomb is Rear Admiral William S. Parsons, USN, chief assistant to Admiral Blandy in the coming Bikini tests.



(U. S. Army Signal Corps photo)

**TECHNICAL** Director under Admiral Blandy is Dr. Ralph A. Breyer, a Navy Commander from 1941 to February, 1946. Dr. Breyer, a professor of physics now on leave from the University of Michigan, and was war-time laboratory director at the Naval Ordnance Proving Grounds, Dahlgren, Va.



(U. S. Army Signal Corps photo)

**ATOMIC** Energy-Harnesser is Major General Leslie R. Groves, USA, who heads the Manhattan Engineer District which will furnish the bomb, much of the testing material, and instruments for the coming Bikini test. Under Maj. Gen. Groves' direction, the Hiroshima and Nagasaki bombs were produced.



Official U. S. Navy Photograph

**HOSPITAL** afloat is the USS Haven, a hospital ship, which also will be among the support units in case of any injuries. Although no personnel will be within a ten-mile area of the tests, the ship will be on the alert. The Haven operated in the forward areas, treating wounded and carrying them back to the States. Ships such as the Haven, equipped as full-fledged hospitals, operated off beachheads, bringing expert medical attention to the wounded within minutes after their injuries.

**IVORY FLAKES**  
FOR TWICE THE WEAR FROM FINE FABRICS

**IVORY SNOW**  
LONGER LIFE FOR ALL NICE WASHABLES

**DREFT**  
MAKES DISHES SHINE WITHOUT WIPING

**DUZ DUZ**  
DOES EVERYTHING

**OXYDOL**  
WASHES WHITE WITHOUT BLEACHING

**STROUP'S MARKET**  
WABEEK BUILDING

**NOW IN STOCK FOR YOUR CHOICE**

(USE ECCENTRIC WANT ADS FOR BEST RESULTS)

*Fun over the Fourth!*

Away you go for a wonderful rocket-soaring holiday of fun and frolic. And into your suitcase goes these delightful sports clothes ready to romp over sand and surf, wooded hills and stream! See our new pedal pusher outfits, underwater bathing suits, play clothes and new dirndl charmers and mandarin coats. All for fun loving you!

**Pedal Pushers**  
\$5.40 to \$10.95

**White Jersey Blouses**  
\$2.25 and \$2.95

**Wool Cotton and Satin-Latex Bathing Suits in all Colors**  
\$3.95 to \$7.95

**Cotton and Jersey Play Suits with Detachable Skirt**  
to \$10.95

**Dirndl Skirts to wear with Halter or Blouse**  
\$4.95

**Mandarin Coats for street or beach wear... pastel shades**  
\$7.95

**CLOSED WEDNESDAY AFTERNOONS**  
**OPEN FRIDAY EVENINGS**

**F. J. MULHOLLAND CO.**