

The Birmingham Eccentric

I have said before, and will repeat, it again and again, that one of the worst God-forsaken and pitiable of humans is he or she who neglects to provide for a parent, when the latter's economic condition requires aid. The grown-up son or daughter who is unwilling to assume this obligation is lacking in Christian charity.

SIXTY-EIGHTH YEAR—NO. 48

BIRMINGHAM, OAKLAND COUNTY, MICHIGAN, THURSDAY, FEBRUARY 21, 1946

\$2.00 PER YEAR (In Oakland County)—SINGLE COPIES, 5c

ARE YOU PLANNING TO BUILD?

We offer a wide selection of Birmingham and Bloomfield sites and sincerely believe NOW is the time to secure what you want at present reasonable prices.

We are glad to give you essential details on restrictions, front and side building lines and other information peculiar to the various districts.

Walsh, James & Wasey Co.

431 S. Woodward Ave. Birmingham 1250

WHEN YOU NEED INSURANCE

ANY KIND FOR LIFE OR PROPERTY

CALL OR SEE James R. Mock

TOWNSEND 8-0715 B'HAM 1432

CHECK THE MILEAGE "ON YOUR ROOF"

The earth and everything on it turns in one complete revolution every 24 hours. A roof travels about 9,000,000 miles each year—in all kinds of weather. Maybe it's time you had your roof checked by experts before.

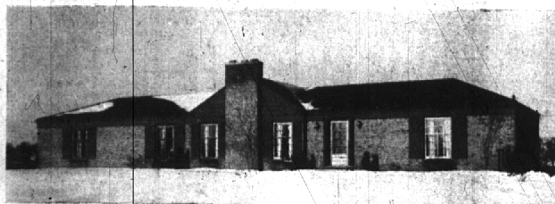
THE SPRING RAINS.

THERE WILL AGAIN BE A SERIOUS SHORTAGE IN ALL TYPES OF ROOFING THIS SPRING

W. P. HICKMAN COMPANY

1360 E. Maple, Birmingham
21 Years' Experience EXPERT ROOFING KNOW HOW

It's A Gem!



DEAL for a small family and so completely different in every detail, this one-floor ranch home in Bloomfield is truly "one in a million." Perhaps you'll recognize it from the picture—but you'll be astonished when you see its rich interiors.

The entrance hall is paved with warmly polished brick and a step leads down into a living room completely paneled to the ceiling in select grain mahogany. Opposite, the fireplace wall and facing east is a large adjoining porch which overlooks a horseshoe-shaped sunken garden with terraced walls and perennial beds. The dining room, too, overlooks this garden and, like the hall, is a step up from the living room level. The kitchen is a housewife's dream with all the modern cup-

boards and counters one could desire.

The bedroom wing lies beyond the living room and has 2 large bedrooms, one of which is 19 feet wide, and a colorful bath with built-in vanity and recessed tub and shower.

Best of all, for those who like to entertain, is the recreation room, warmly pine-paneled and opening on the garden at ground level. A snack bar, pine paneled too, adjoins it.

The site is gently sloping and over an acre of land allows all the gardening you need. The taxes are only \$112, and the oil-air conditioning costs are the same figure. Both bus and commuter service are near at hand. Truly, here's a most unusual and attractive home. We'll be glad to make appointments!

CALL

MAX BROOCK INC.

REALTORS ESTABLISHED 1993

112 S. Woodward

Birmingham 1212



Bits of Birmingham

LeRoy Braisted, 1445 Square Lake road, returned home the sabbath day from the Philippines and came in to order his Eccentric discontinued. "We get it at home," he explained. The returned seaman declared The Eccentric was an ever welcomed piece of mail. "It was weeks and weeks late but we read every word in it. And we were certainly glad to get all the news from home."

If you need the assistance of an internal revenue collector deputy in making out your returns, there will be one at Southfield Township hall today, Feb. 21, and one in Birmingham at the Municipal Building on Monday and Tuesday, Feb. 25 and 26. The deputies work during regular office hours and tell the Wanderer they will be glad to be of whatever assistance they can to taxpayers.

Down in Detroit the fees for use of four municipal golf courses, Palmer Park, Chandler Park, River Rouge and Rackham, have been standardized at 50 cents for nine and one dollar for eighteen holes. Over at Belle Isle the rate will remain at 35 cents for the nine holes. The various courses will be free to members of Detroit City high school golf teams. At River Rouge there will be free golf Mondays for women, if they tee off before 1 p. m. Fees for Springdale park's nine-hole course have not yet been set for this season, but are expected to be set at about the same figure as the public courses in Detroit.

Maybe Birmingham will not have as many Victory Gardens as last year and maybe not as many people will be as interested in gardening. But just in case there might be some new gardeners wanting to know all about this and that of what to plant and how to grow, a gardening course, for new gardeners who have had no previous courses in basic gardening

practices, will open at the Rackham Memorial at 7:30 p. m. on Friday, March 1. The University of Michigan Extension Service announces. The eight noncredit lectures will include: practical instruction in plants, soil conditioning, cultivation, feeding and supplying moisture. Former students may be interested also, since new material will be presented relative to recent developments in methods, materials and plant introductions. The field courses in gardening, in which students will visit different gardens each month, will be offered later in the season.

The Wanderer has finally won an argument from the boss, H. Lee North, who came from Petoskey and claims that the city bears an Indian name. We kept telling him he is wrong and the Polacks should have the credit for founding the burgh. Saturday morning the proof came and couldn't be denied, 'cause the Free Press carried the results of the basketball game which was played in the northern community on Friday night and it read: Manistee 37, Petoski 25.

"Stick close to your desk and never go to sea," has always been the motto of this Wanderer, but last Wednesday evening he decided not to practice what he preaches and went to a meeting of the Birmingham Sea Scouts, which was held on the top deck of the Sea Scout ship. The ship set sail from the basement of the Community House at eight bells and returned to the samplings at four bells. During the cruise the Wanderer learned more nautical terms and phrases than he had known previously and could almost taste the salt in the ocean air. By now, the casual reader will have made up his mind that the Wanderer is off the beam again, but if you are sceptical you, too, can attend a Sea Scout meeting and learn the difference between a bulkhead and a barnacle.

The Wanderer was looking through that annual report of the police department again today and discovered a total of 203 offenses had been reported to police. These included 34 cases of burglary; four of simple larceny, 145 of grand larceny and 20 car thefts. After investigation 19 of these cases were classed as "unfounded," listed as "cleared by arrest" were 19. Among the minor violations were 336 road and driving law cases and 938 parking regulation violations. There was a total of 61 parking cases in which the violator failed to report to police, and who thus far have remained unlocated.

Detroit city's motor division is praising Patrolman Ervin Appelt as the city's bloodhound when it comes to recovering stolen cars. Patrolman Appelt has recovered 2,245 cars since 1937, when his ability to retrieve stolen cars was first recognized. That reminds this Wanderer that in Birmingham

last year 16 cars were reported stolen and all of them were recovered. Two of them were found in Birmingham and fourteen were found in other cities and locations. Birmingham police recovered thirteen cars stolen in other cities. The monthly records disclose that people are more careful of their cars in February and October. No cars were reported stolen in Birmingham during those months in 1945. January was the worst month. Four were stolen in January, 1945.

Birmingham pheasant hunters may as well become reconciled to the fact that next fall's shooting won't be much better generally than during 1945's poor season. In good pheasant areas, such as the Thumb, the prospects are brighter. Two favorable breeding seasons in succession may be necessary to restore pheasant populations to the high levels of the early 1940's, this Wanderer has been told. Durward L. Allen, who is in charge of the wildlife experiment station at Rose lake, points out that a wet period in the climatic cycle has been responsible for widespread breeding-season losses in pheasants with drastic reductions of bird populations all the way from New England to the Dakotas. The end of the wet cycle isn't in sight.

Contrary to popular opinion, if you do not have a telephone receiver and ask the operator for "No. 1," you won't get the police station, fire station, or someone who knows the president of the Michigan Bell Telephone system. It will be just an average Birmingham citizen like you or us who answers: Rex Humphrey, real estate dealer, of 1692 S. Woodward.

And just in case you're interested in a few other low telephone numbers, we checked on the first ten numerically: 3—E. Westlauer, Shalfoote road; 3—Donald D. James, Donington Lane; 4—Charles J. O'Connor, 2276 Avon Lane; 5—offices of Drs. John H. Gordon and George P. Raynole, Wabcock building; 6—has been disconnected; 7—Frank J. Ortman, 971 Waddington; 8—Dr. Harold R. Roehm, Wabcock building; 9 and 10—Steward's Auto Supply, 408 S. Woodward.

(Continued on Page 2, Part 2)

INSURANCE - BONDS
THE BIRMINGHAM AGENCY
CHAS B. RANDALL
OSCAR P. PETERSON
Insurance for Every Need
PHONE 840
1065 WOODWARD, BIRMINGHAM

PHONE VE 7-8500 B'HAM 1448 T. N. HUBBARD

HUBBARD & HUBBARD, INC.

Building Contractors

For Over Forty Years Detroit 27, Mich.

14255-85 Schaefer Highway
CARPENTRY ALTERATIONS ADDITIONS REPAIRS

Let Us Discuss Your Building Needs With You

Save and Have!
Financial security comes as the result of foresight and planning



Birmingham Federal

SAVINGS AND LOAN ASSOCIATION

Member of Federal Home Loan Bank System and Federal Savings & Loan Insurance Corporation

Irresistible



BLOOMFIELD VILLAGE

As you can plainly see and better still . . . recently built! School is only a few short blocks and that of course simplifies Mother's daily routine.

Fully insulated, complete with storm sash, the Car Wood unit heats the house for about \$100. Taxes are scarcely any more, just \$11.00 per month. Carpeting and draperies are included with the sale and June delivery is assured.

Five bedrooms, three baths comprise the upstairs. A paneled library, ample sized rooms, and a long screened porch complete the first floor. Kitchen is easy to maintain because it's paneled—natural wood finish. Play house or tool house for storage supplements the garage.

Consider this and see it quickly if modern housing is what you need.

SNYDER BUCK & BENNETT INC.

239 S. Woodward Birmingham, Mich.

Announcing . . . Four New Subdivisions in Bloomfield Hills "LOCHSLEA" "WEST LOCHSLEA"

With Frontages on Lower Long Lake or Island Lake

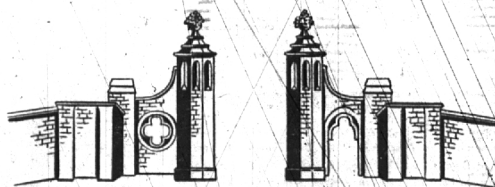
"Forest Park Estates" "Forest Lake Country Club Estates"
North Shore of Lower Long Lake and Forest Lake
West of Franklin Road, South of Square Lake Road, adjacent to Forest Lake Country Club

Also Individual Parcels

With Frontage on Lower Long Lake, or Island Lake

If you intend to build . . . may we suggest that you consider these attractive properties. Investigate these subdivisions, Bloomfield Hills' newest . . . now being developed by the EDWIN S. GEORGE FOUNDATION.

Located in the lovely, rolling country northwest of Detroit, and Birmingham, they comprise one thousand forty acres of lakes, woodlands and orchards. Complete details, plat plans and restriction information are available. See your broker or call us for full information and particulars.



Edwin S. George Foundation

BLOOMFIELD HILLS

PONTIAC 2-9491

Use The Eccentric Want Ads