

# MORTGAGE LOANS

at Low Interest Rates

**JAMES P. CUMMISKEY, JR.**

Local Representative of Leading Banks and Insurance Companies

Specializing in Mortgages in the Birmingham - Bloomfield - Franklin areas.

BHAM 3901

CHerry 1814

# NADER'S RUG RENOVATORS

Exclusive Washing and Repairing of ORIENTAL RUGS

Work Done by Native Experts  
No Mechanical Devices Used

Randolph 4287

1110 PARK PLACE  
DETROIT 26, MICH.

Seeing Is Believing!



from \$75 to \$4,500

The beauty of a truly fine diamond is clearly visible in our DIAMONDSCOPE. You see for yourself the flawless quality, exquisite cutting, brilliance and clarity. Don't guess, be sure your diamond is well cut, free from flaws, and has good color. Buy from Garlick's and see the diamond through this scientific instrument pictured above.

Antiques and Moderns China and Glass on Our Second Floor

**J. H. Garlick & Sons**  
Certified Gemologists  
1126 GRISWOLD ST.  
Registered Jeweler—American Gem Society

## Mrs. Beal's Young Artists Exhibit Work This Week End

The focus of activities this week end is centered around the exhibition of art work done by young



Dorothy Lee Beal

students in the art classes of Mrs. Dorothy Lee Beal.

The young artists whose works are represented in the show are from other suburban areas besides Birmingham and their parents, too, will be on hand at the Community House today, tomorrow and Saturday to view their children's handiwork.

Tomorrow afternoon from 4 to 5:30, Mrs. Beal will be hostess at

**ACME Window & House Cleaning Company**  
Phone 1162  
424 PARK STREET  
BIRMINGHAM  
"Oakland County's Oldest Window Cleaning Service"

## A Water Softener You Don't Have To Buy!

Our Water softeners are installed and exchanged regularly for only a few cents a day!

As simple as automatic hot water!

Phone 4-3827 for Particulars  
**Oakland Soft Water Service Co.**  
917 Orchard Lake Ave., Pontiac

Enjoy its  
**Tempting Bouquet!**  
IMPORTED  
**FRENCH CHAMPAGNE**

**P. HENNEQUIN & E. BARBIER**

VINTAGE BRUT 1937

Here again at Low Prices

Smooth as a lover's dream is the silken, palatable bouquet of this aristocrat of beverages.

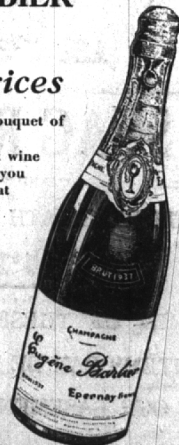
From the sunny climes of France, world's finest wine growing region, DIRECT IMPORTING brings you these internationally renowned champagnes at an amazingly low price.

• For Parties • For Gay Suppers  
• For Real Pleasure

imported by  
**P. Hennequin & E. Barbier**

Available at better grocers and druggists in Michigan

**G. Viviano Inc.**  
IMPORTERS—VINTNERS



a tea there, and doing the table decorations is Mrs. Alex Gray. Fouring will be Mrs. C. C. Bowman of Detroit, Mrs. Floyd Franklin, Mrs. Norman Lyle and Mrs. E. James Duncan, Birmingham.

### Special Guests

As special guests for the exhibition, Helen Condon of Highland Park and Elizabeth Howard Minister of Grosse Pointe will be on hand. Mrs. Beal was the illustrator for Helen Condon's book, "Cordelia for Forget-me-nots" and Mrs. Minister is the author of "Sabina" and "Adventures for Allison."

Birmingham artists whose work will be on display include Ellen Campbell, Kathryn Brewster, Nancy Howell, Jane Woodhouse, Cynthia Hadley, Peg Hallock, John and Ned Haugen, Judy Earle, Sally Arnold, Joanne Harley and Phyllis Abbott.

Others are Claire Anderson, Janet Weber, Pat Hummel, Elizabeth Cobb, Karen Sue Elliott, Beverly Seales, Barbara and Lee Sterling, Dick Gregory, Glynis Robinson, June Kuykendall, Chuck Arnold, JoAnn Shotka and Allan Buzgus.

From Royal Oak come Marilyn Collins, Marilyn Brady and Pat Kanitz, while Virginia Vokes is from Detroit, Margaret Burston from Highland Park, and Jerry Karsava is from Ferndale.

## AAUW Women Plan Luncheon, Program For Next Wednesday

The Christmas luncheon and final get-together before the holidays for the American Association of University Women will take place Wednesday, Dec. 11, at 1 p. m. at the Community House.

The program is being put on by the book groups who are combining forces with the monthly branch meeting so that all may enjoy a Christmas party together.

Mrs. J. D. Hagey will review the historical poem, "Western Star," by Stephen Vincent Benet. Hostesses will be the book group chairmen and the general study group chairmen.

Reservations must be made by Dec. 7. Those not members of the book groups are asked to call Mrs. George Green for reservations. Mrs. Green will also take charge of any cancellations.

## Stay-Put Bra



Girls, the day of strap marks on your skin is about over. Here's pretty Doris Singleton, modeling a plastic brassiere of Hollywood—no wires, no straps, and it's made to stay put even with straps down.

## Community House Calendar

Thursday, Dec. 5  
3:30 to 5:30 p.m. Ranch Room.  
6:00 p.m. Family dinner.

6:30 p.m. Business Women's dinner.  
8:00 p.m. Camera Club.  
8:30 p.m. Speech class.  
8:00 p.m. Club 1930.

Friday, Dec. 6  
3:30 to 5:30 p.m. Ranch Room.  
7:30 p.m. Quadrille dinner/dance.  
7:30 to 12:30 Ranch Room.

Saturday, Dec. 7  
2:30 to 4:30 p.m. Ranch Room.  
7:30 to 12:30 Ranch Room.

Monday, Dec. 9  
10:30 a.m. League of Women Voters.  
12:00 noon Rotary Club luncheon.  
1:30 p.m. Garden Club.  
2:00 p.m. Garden Club luncheon.  
3:30 to 5:30 p.m. Ranch Room.  
5:30 p.m. Hi-12 Club dinner.  
8:00 p.m. Ground School.  
8:00 p.m. Stamp Club.  
8:00 p.m. Beverly Hills Association.

8:00 p.m. Community House board meeting.

Tuesday, Dec. 10  
10:00 a.m. International Relations.  
12:00 noon Exchange Club luncheon.

12:00 noon Retail Merchants luncheon.  
2:30 to 5:30 p.m. Ranch Room.  
7:30 p.m. Boy Scouts.  
8:00 p.m. YMCA Camp Committee.

8:00 p.m. Reserve Officers.  
8:00 p.m. Club 1930 Square Dance.

Wednesday, Dec. 11  
12:00 noon Lions Club luncheon.  
2:30 to 5:30 p.m. Ranch Room.  
7:00 p.m. AAUW luncheon.  
7:00 p.m. Chestnut Union dinner.  
7:30 p.m. Sea Scouts.  
8:00 p.m. Rehearsals.  
8:00 p.m. Junior Chamber of Commerce.  
8:30 p.m. Duplicate bridge.

Thursday, Dec. 12  
9:00 a.m. Musicale practice.  
10:30 a.m. Red Cross Sewing.

Have You Met . . .

Mr. and Mrs. Arvid Peterson? The Petersons moved out from Detroit to reside at 1007 Chestnut street. Their children are grown and Mr. Peterson is a contractor and builder.

SOCIETY NEWS must be in the Executive editorial office by five o'clock every Tuesday afternoon. Deadline for CLUB NEWS remains at noon Mondays. adv. 12

Have You Met . . .

She Has the Edge

Film actress Evelyn Keyes, above, was chosen "The Girl With the Most Beautiful Profile—All the Way Down" by the Society of American Theatrical Photographers and Artists.

Film actress Evelyn Keyes, above, was chosen "The Girl With the Most Beautiful Profile—All the Way Down" by the Society of American Theatrical Photographers and Artists.

Film actress Evelyn Keyes, above, was chosen "The Girl With the Most Beautiful Profile—All the Way Down" by the Society of American Theatrical Photographers and Artists.

Film actress Evelyn Keyes, above, was chosen "The Girl With the Most Beautiful Profile—All the Way Down" by the Society of American Theatrical Photographers and Artists.

Film actress Evelyn Keyes, above, was chosen "The Girl With the Most Beautiful Profile—All the Way Down" by the Society of American Theatrical Photographers and Artists.

Film actress Evelyn Keyes, above, was chosen "The Girl With the Most Beautiful Profile—All the Way Down" by the Society of American Theatrical Photographers and Artists.

Film actress Evelyn Keyes, above, was chosen "The Girl With the Most Beautiful Profile—All the Way Down" by the Society of American Theatrical Photographers and Artists.

Film actress Evelyn Keyes, above, was chosen "The Girl With the Most Beautiful Profile—All the Way Down" by the Society of American Theatrical Photographers and Artists.

Film actress Evelyn Keyes, above, was chosen "The Girl With the Most Beautiful Profile—All the Way Down" by the Society of American Theatrical Photographers and Artists.

Film actress Evelyn Keyes, above, was chosen "The Girl With the Most Beautiful Profile—All the Way Down" by the Society of American Theatrical Photographers and Artists.

Film actress Evelyn Keyes, above, was chosen "The Girl With the Most Beautiful Profile—All the Way Down" by the Society of American Theatrical Photographers and Artists.

Film actress Evelyn Keyes, above, was chosen "The Girl With the Most Beautiful Profile—All the Way Down" by the Society of American Theatrical Photographers and Artists.

Film actress Evelyn Keyes, above, was chosen "The Girl With the Most Beautiful Profile—All the Way Down" by the Society of American Theatrical Photographers and Artists.

Film actress Evelyn Keyes, above, was chosen "The Girl With the Most Beautiful Profile—All the Way Down" by the Society of American Theatrical Photographers and Artists.

Film actress Evelyn Keyes, above, was chosen "The Girl With the Most Beautiful Profile—All the Way Down" by the Society of American Theatrical Photographers and Artists.

# PEABODY BROS.

FRUIT-DEPOT

HUNTER BLVD. AT MAPLE

Call 4039

A Complete Line of  
Fresh Fruit and Vegetables

Butter . . . . . 85c Lb.  
Eggs Small . . . . . 52c Doz.  
Eggs Large . . . . . 67c Doz.

Orders Taken Up Till Friday Noon For CHICKENS For The Week End . . . . . 55c Lb.

## We Cordially Invite You To Visit Our RECORDING STUDIO

1. Treated for proper acoustics.
2. Professional recording equipment.
3. Piano for accompaniment.
4. Provision for making copies.

We specialize in recording small instrumental combinations, vocal groups, business messages and personal greetings. Portable recording equipment is available for weddings, outside business or social functions or large instrumental groups. Why not send personal recorded "Season's Greetings" this year?

**McCallum & Dean**

Electronic and Suppression Engineering

409 E. Maple Ave. Phone 4060

## What the Brown-out Means to You

### Civilian Production Administration Prohibits Certain Uses of Electricity

As a means of conserving coal during the work stoppage at the nation's bituminous coal mines, the Civilian Production Administration has issued an order, effective 6 p.m., Monday, November 25, which prohibits the use of electricity for the following purposes:

1. Refrigeration for air-conditioning except to the extent essential for industrial processes or for health and safety.
2. Outdoor and indoor advertising and promotional lighting.
3. Outdoor display and flood lighting except to the extent necessary for the conduct of outdoor business or services.
4. Outdoor or indoor decorative and ornamental lighting.
5. Show window or show case lighting.
6. Marquee lighting in excess of 60 watts for each marquee.
7. White way street lighting in excess of the amount determined by local public authority to be necessary for public safety.
8. Outdoor or indoor sign lighting except for:
  - (a) Directional or identification signs required for fire and police protection, traffic control, transportation terminals, or hospitals, or directional or identification lighting for any similar essential public service.
  - (b) Directional or identification signs using not more than 60 watts per establishment, for doctors and for hotels and other public lodging establishments.
9. Outdoor entrance lighting, except the minimum essential for public health and safety and then not more than 60 watts per entrance.
10. Any other form of general outdoor or indoor illumination in or about any commercial, industrial or other non-residential establishment in excess of 75 per cent of the illumination normally used.
11. In excess of 75 per cent of the normal passenger elevator or escalator services in any building having more than one passenger elevator or escalator.

The Company supplying you with electricity is required to bring this order to the attention of all its customers.

Because almost all of the electricity Detroit Edison makes comes from soft coal, we have been ordered by the Civilian Production Administration and by the Michigan Public Service Commission to comply with all Federal, State and local ordinances restricting certain uses of electricity during this emergency.

In the event of persistent violation the Civilian Production Administration may direct Detroit Edison to discontinue service to any customer who is in violation. WE WILL BE GLAD TO ADVISE WITH CUSTOMERS IN MEETING THESE REGULATIONS, AND WE ASK ALL OUR CUSTOMERS TO HELP US IN MAKING THEM EFFECTIVE.

**The DETROIT EDISON Co.**