

Suggestions Given For Building New Lawns This Fall

August 15 to September 1 is the time to seed a new lawn in Birmingham and other lower Michigan communities, says Karl D. Bailey, county agricultural agent. He outlines important steps which should be taken to establish a new lawn.

First, grade the yard properly to set off the buildings and provide desired contours and landscape features. The most satisfactory grades slope gently away from the buildings in all directions. Avoid terraces and steep grades.

After the grading is done, add topsoil. Dark colored, sandy loam and loam soils are ideal. If loams are not available, good lawn soil can be prepared. Bailey suggests mixing one bushel of clay soil, one bushel of muck or peat and two

bushels of sandy soil. If a clay loam is available, mix one bushel of one bushel of peat and only two. On loams or clay subsoils, the layer of topsoil added should be from 6 to 10 inches deep. If the subsoil is sandy, 10 to 12 inches of topsoil will give better results.

Do not add lime to lawn soils unless tests show the soil strongly acid. After the topsoil has been leveled, broadcast 10 to 15 pounds of 16-4 lawn fertilizer per 1,000 square feet and thoroughly rake into the surface soil.

Before seeding, alternately rake and roll the lawn surface until firm. The feet should not sink into the soil appreciably when the seedbed is sufficiently firmed. After the soil has been firmed properly, rake lightly over the surface before seeding.

Keep new lawn seedings moist, watering with a fine spray to avoid washing. Begin mowing when grass has reached a height of 3 inches. Set the mower to cut at a height of two inches and maintain grass at this height, the agent recommended.

Vets Advised To Tell Of Plans To Transfer To Larger Colleges

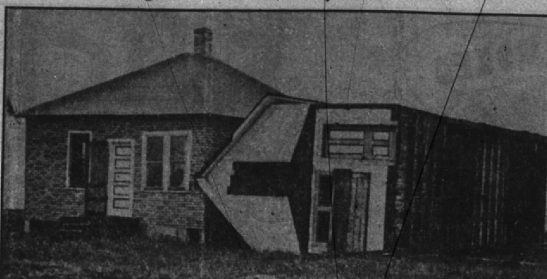
Birmingham veterans who plan to enroll this fall in smaller colleges and transfer later to larger schools should state their intentions when they first enroll in the smaller colleges. Veterans Administration education and training officials have advised.

VA has received reports that many veterans who would like to attend larger colleges, but who have been prevented from doing so because of heavy enrollment, plan to take two years now in the smaller schools where there are vacancies and transfer to larger schools for the last two years.

The state conservation department has appropriated \$50,000 to build an improved highway to the upper and lower Tahquamenon Falls in Luce County, Upper Peninsula.

The state conservation department has appropriated \$50,000 to build an improved highway to the upper and lower Tahquamenon Falls in Luce County, Upper Peninsula.

Neighbors Crowded—Cyclone's Fault



Cyclone at Fort Francis, Ontario, toppled one house over on its side with such force it neatly pushed in wall next door.



By GENE ALLEMAN

Notes from a traveler's journal: What is going to become of Captain Joe Beach's delightful, leisurely "Toonerville Trolley" and river boat excursions to the Tahquamenon Falls in Luce County, Upper Peninsula?

The road will start at Paradise on Whitefish Bay, Lake Superior. It will proceed fourteen miles west to the lower falls and thence several miles more to within a quarter mile of the upper falls.

As we traveled on Captain Beach's excursion early in August, the question arose of what would happen to this unusual day's journey to the falls. The average American seems inclined to go places as quickly as possible.

Two so-called "night club" mark the town of Dollarville, a mile and a half south of Newberry. In company with a group of newspaper people we visited one of these hot spots. A piano player was banging away. A few minutes later, when the music was relayed to the Monday night "rush" a drummer arrived to reinforce him.

Life is in constant transition, and Newberry is looking for a better postwar world. Lumbering has been going on in Luce County since the Civil War. You begin to wonder how much longer it can continue.

After a brief war-time revival, the plants are idle. New industries have taken their place, offering better wages for workers. Newberry is better off.

True life story from Newberry: Every morning and afternoon, when weather permits, the patient of the Newberry State Hospital goes to the gate near the state highway and begins waiting down the road, expectantly awaiting the arrival of her husband.

Canadian geese are nesting at the Cutina state game refuge at Seney. Years ago, in the 1880's and 1890's, Seney had the reputation of being the largest spot in the Upper Peninsula. Gambling, fighting, drinking and prostitution were too commonplaces to merit newspaper attention.

Canadian geese are nesting at the Cutina state game refuge at Seney. Years ago, in the 1880's and 1890's, Seney had the reputation of being the largest spot in the Upper Peninsula. Gambling, fighting, drinking and prostitution were too commonplaces to merit newspaper attention.

You hear reports that the tourist business is off on the east coast and vice versa.

So we did a little investigation of our own at Petoskey. Joseph W. Scoggin, manager of the J. C. Penney Company store, said business was "excellent" and on a party with 1946. The Northern Automobile Company, agents for Fords and Sinclair gasoline, reports a 40 per cent increase in sales over 1945.

Petoskey is joining with Cheboygan and Indian River in pushing a program for improvement of the inland waterway, a 40-mile for

Clearance Sale!!! BOATS GYPSY COTS CAR VACUUM CLEANERS MAPLE SALES & SERVICE, Inc. 814 E. Maple Phone 2320

Clipper Van Lines, Inc. LONG DISTANCE MOVING. Rush Orders . . . We Love 'Em . . . TRinity 3-2680 A National Organization

pleasure boats from Cheboygan to Petoskey. In 1900 the resorters induced Congress to declare the waterway a Federal controlled route. Active in this promotion are Charles T. Lathers, ex-Tiger player who has a dairy farm near Cheboygan; James Harrington, former Ford official and cottager on Burke Lake, and Joseph Graham, summer resident and one of the Graham brothers of automobile pioneer days.

OFFICE SUPPLIES Mimeographing and Typewriter Supplies. Bloomfield Press 286 S. Woodward Phone 2711

NADER'S RUG RENOVATORS Exclusive Washing and Repairing of ORIENTAL RUGS Work Done by Native Experts No Mechanical Devices Used Randolph 4287 1110 PARK PLACE DETROIT 26, MICH.

FREEDOM OF ACTION for Sports of all Sorts Rayon-Cotton TEE SHIRTS Plain colors of maize, blue, tan or plain white \$2.00 PECK'S Men's Wear Tailoring Cleaning Pressing Altering Repairing S. Woodward near Maple Phone 230

Special Offer Only Until Aug. 31 Complete Grease Job Oil Change - 5 qts. Kendall Oil For \$2.00 JOE'S SERVICE 784 S. Woodward Phone 3582

TRIMMING ORCHARDS, SHADE TREES and SHRUBS TREE SURGERY We Spray Lawns for Dandelion and Weed Control MICHAEL J. JASSO PHONE 810 BRAVER 147 ROUTE 4, BIRMINGHAM

Advertisement for RB SHOPS featuring a woman in a DANDY COLLAR \$5.95 and Bur-Mil Crepe. Text: Bow-tied beauty in white, navy, lemon, pink and beige - sizes 32 to 36 - very fine tailoring.

Advertisement for RB SHOPS featuring clothing items like SERVICE-STRIPES and THE BAGPIPER. Text: You'll be "mad about" 'em. RB SHOPS 142 W. Maple Open Friday Nights

Advertisement for P. HENNEQUIN and E. BARBIER Imported French Champagne. Text: Just Arrived! IMPORTED FRENCH CHAMPAGNE Vintage Brut 1937 Here again at Low Prices. G. VIVIANO, INC. Importers