



By GENE ALLEMAN

"Preposterous fabrication of lies" retorted Harry H. Jackson, ex-warden of the state prison at Jackson, to the following convicts told charges as aired at state civil service commission hearings in Lansing.

That nearly two dozen cases of whiskey were delivered to Jackson's prison residence from O'Larry's bar in Detroit where the state charged the murder of Senator Warren G. Hooper, a hearing was permitted to visit a house of ill fame several times and that the prison employes who arranged it were unimpaired.

That wide-open gambling prevailed at times in the prison yard where prisoners ran black-jack and dice tables.

That a guard was bribed to permit a girl to visit the hospital room of an inmate.

Jackson was discharged after an investigation by Attorney General John R. Dethmers had disclosed alleged misadministration of the prison by the following: Jackson, the warden; D. C. Pettit, assistant deputy warden; George J. Francis, deputy warden; H. Charles Warden, records clerk; Walter L. Wil-

son, chief guard inspector; Richard T. Riley, athletic director, and Joseph G. Poirier, accountant.

The seven officials, dismissed from their duties, appealed the action of the state corrections commission to the civil service commission which has been conducting hearings on the evidence.

Pettit withdrew his appeal. Following disclosure that O'Larry's bar had again figured in scandal, the state liquor control commission ordered a hearing, April 16 to face charges of illegal sales.

An unexpected bouquet was handed to the state liquor control commission by E. C. Prettyman, superintendent of the Michigan Temperance Foundation, the successor to the Michigan Anti-Saloon League. Said Prettyman, as quoted in the press:

"The state commission has done more toward cleaning up the liquor and licensed places than any commission since I came to Michigan four and a half years ago."

Prettyman's comment followed the state convention at Lansing of the Michigan Table-Top Liquor, dispensers of beer and liquor, who were urged by Thomas

O'Keefe, leading Detroit beer distributor, to elect people to office who are honest and will "do the job you want them to do."

According to Prettyman, spokesman for the drys, the liquor licensees are going into politics.

Another quotation: "We have from a reliable source information that one of the Republican candidates for governor can have a large contribution for his campaign fund if he will get rid of certain members of the liquor control commission."

If you wonder why Michigan's primary election is going to be held mid-June this year instead of mid-July, here's the reason.

Michigan farmers and fishermen take their responsibilities seriously. So much so that the state legislature decided in a special session to change the election date.

Government Kelly originally suggested July 9, just two days off the time of the 1944 state primary on July 11. But that is a busy plowing season for farmers, so state legislators recalled. Hence the date was moved by a legislative bill-drafting committee to June 25.

Then Rep. Elton R. Eaton, Plymouth newspaper publisher, reminded solons that June 25 was the opening of the base season and that Republicans needed the fishermen vote because of the average fishermen's "high intelligence." June 18 was the final choice, because farmers like to get in July and because beam fishermen prefer to go fishing on June 25.

The state law requires county political conventions to be held within nine days after the primary, making June 27 as the last convention date. The Michigan Republican state central committee has selected Friday, July 5, for the state convention which will be held at the Cass Technical high school, Detroit. The Democrats' choice is Saturday, July 6, at the Prudden auditorium, Lansing.

The Michigan supreme court has ruled that it is legal to gamble on horses under the 1933 pari-mutuel betting law. A Wayne county judge ruled that it was legal. The Detroit track will open May 25 and continue through July 20, announced William J. Dowling, racing commissioner.

Despite the long automobile strike Michigan retail sales are still climbing, and the state department of revenue at Lansing anticipates a total of 211 million dollars income for the current fiscal year closing June 30. This will be approximately 12 million dollars over the previous year.

Privately, department officials are counting on a sustained high income from sales taxes for the years of 1946 and 1947.

Remember, the economic adjustment after World War I came in 1920, two years after the Armistice.

Honor graduates of the waiters' course in courtesy will be the one who learns how to pick up a nickel tip gracefully.—Boston Globe.

Notice to Property Owners: The City Commission of the City of Birmingham will meet Monday, April 22nd, 1946, at 8:00 P.M. in the Commission Room in the Municipal Building to consider any objections to the construction of certain improvements on Woodland and Oak described herein; and the creation of a special assessment district, created to defray the cost of construction of sewer on Woodland extending approximately 50 feet south of Oak, and a sewer on Oak extending from Greenwood westerly a distance of approximately 500 feet.

The Commission proposes to create a special assessment district to defray the cost of this construction and said special assessment district shall consist of the following described property: Bloomfield Villas; Lots 1 to 6 Inclusive.

Birmingham Heights; Lots 29 to 40 Inclusive.

Plans and estimate of cost of this project are filed with the City Clerk of the City of Birmingham for examination by the public.

IRENE E. HANLEY, City Clerk

April 9, 1946

Notice to Property Owners: HAZEL STREET PAVEMENT. The City Commission of the City of Birmingham will meet Monday, April 22nd, 1946, at 8:00 P.M. in the Commission Room in the Municipal Building to consider any objections to the construction of certain improvements on Hazel Street, described herein; and the creation of a special assessment district, created to defray the cost of construction on Hazel Street between Woodland and Hutton a concrete pavement 32 feet in width, from face to face of curb, and gutter and necessary appurtenances.

The Commission proposes to create a special assessment district to defray the cost of this construction and said special assessment district shall consist of the following described property: Assessor's Plat No. 15—Lots 7 and 8.

Plans and estimate of cost of this project are filed with the City Clerk of the City of Birmingham for examination by the public.

IRENE E. HANLEY, City Clerk

April 9, 1946

How to Sparkle



A new thing in beach and street wear—jeweled sun glasses! Lorraine Edelstein of Brooklyn, N. Y., makes them look their best.

NOTICE TO PROPERTY OWNERS: OAK STREET SEWER. The City Commission of the City of Birmingham will meet Monday, April 22nd, 1946, at 8:00 P.M. in the Commission Room in the Municipal Building to consider any objections to the construction of certain improvements on Woodland and Oak described herein; and the creation of a special assessment district, created to defray the cost of construction of sewer on Woodland extending approximately 50 feet south of Oak, and a sewer on Oak extending from Greenwood westerly a distance of approximately 500 feet.

The Commission proposes to create a special assessment district to defray the cost of this construction and said special assessment district shall consist of the following described property: Bloomfield Villas; Lots 1 to 6 Inclusive.

Birmingham Heights; Lots 29 to 40 Inclusive.

Plans and estimate of cost of this project are filed with the City Clerk of the City of Birmingham for examination by the public.

IRENE E. HANLEY, City Clerk

April 9, 1946

NOTICE TO PROPERTY OWNERS: HAZEL STREET PAVEMENT. The City Commission of the City of Birmingham will meet Monday, April 22nd, 1946, at 8:00 P.M. in the Commission Room in the Municipal Building to consider any objections to the construction of certain improvements on Hazel Street, described herein; and the creation of a special assessment district, created to defray the cost of construction on Hazel Street between Woodland and Hutton a concrete pavement 32 feet in width, from face to face of curb, and gutter and necessary appurtenances.

The Commission proposes to create a special assessment district to defray the cost of this construction and said special assessment district shall consist of the following described property: Assessor's Plat No. 15—Lots 7 and 8.

Plans and estimate of cost of this project are filed with the City Clerk of the City of Birmingham for examination by the public.

IRENE E. HANLEY, City Clerk

April 9, 1946

NOTICE TO PROPERTY OWNERS: HAZEL STREET PAVEMENT. The City Commission of the City of Birmingham will meet Monday, April 22nd, 1946, at 8:00 P.M. in the Commission Room in the Municipal Building to consider any objections to the construction of certain improvements on Hazel Street, described herein; and the creation of a special assessment district, created to defray the cost of construction on Hazel Street between Woodland and Hutton a concrete pavement 32 feet in width, from face to face of curb, and gutter and necessary appurtenances.

The Commission proposes to create a special assessment district to defray the cost of this construction and said special assessment district shall consist of the following described property: Assessor's Plat No. 15—Lots 7 and 8.

Plans and estimate of cost of this project are filed with the City Clerk of the City of Birmingham for examination by the public.

IRENE E. HANLEY, City Clerk

April 9, 1946

Easter Lovelies . . . from the



As seen in Calling All Girls

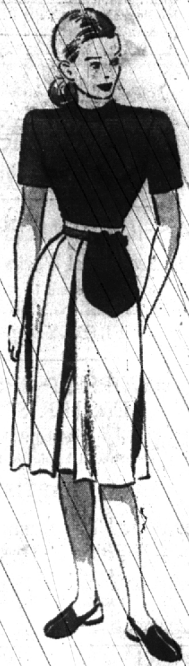
A sassy Doris Dodson number in rayon crepe Navy with an apron front of line trimmed in blue or blue trimmed in lime. Sizes 9 to 15.

\$7.50



Doris Dodson's "On the Pinch" Black, navy, gray rayon crepe de chine. 9 to 15. As seen in Jr. Bazaar.

\$10.95



Doris Dodson's "City Cinderella." One-piece dress looks like a "tuck in." Black, dark green, navy top, beige skirt. Rayon gabardine. Sizes 9 to 15.

\$7.50



Majestic

STAND-UP COLLAR \$5.95

EASTER SALE

of Famous Make Purses

1/3 to 1/2 OFF

This white crepe blouse has a beauty of a bow at the neck and a neatly pleated front. Sizes 32 to 38 . . .

Selected group of nationally known bags reduced so that we can sell them in the season for which they were made. Leathers, plastics and fabrics.



142 W. MAPLE

PRE-SEASON OPENINGS—FRIDAY, SATURDAY, SUNDAY

FOR A DAY OF FUN!

THRILL RIDES! ACRES OF AMUSEMENTS!

FREE! 2 PICNIC GROVES, 2 BALL DIAMONDS, AMPLE PARKING.

ROLLER SKATING NEW MUSIC! IT'S SENSATIONAL!

WALLED LAKE

BOOK YOUR PICNIC NOW PHONE LENOX 0615

DELICIOUS Chocolate "Bunny Rabbits" For Easter Morning

9 1/2 in. High Weighs 3 lb. \$1.25

BIRMINGHAM DRUG STORE 1220 S. Woodward At Ruffner

NO NEW CAR YET?

THEN YOU'D BETTER TAKE GOOD CARE OF THE ONE YOU HAVE

If it's going to be some while before you get delivery on your new automobile, it'll pay to keep your present car in good running order till you get the new one. It'll improve your trade-in value, still give you plenty of driving miles while you wait. Now's the time for a SPRING CHANGE-OVER from winter lubricants. Drive in today and vitalize your car!

WE HAVE BEEN UNDER NEW MANAGERSHIP FOR SOME TIME

Birmingham Motor Sales, Inc. Authorized Nash Agency

666 So. Woodward Phone 444 E. G. Wilson, General Mgr. Herb Hetrick, Service Mgr.

STORE-GAZING IN BIRMINGHAM

Easter is the time for a few festive touches in the line of baked goods . . . and at MACHUSS' you'll find some delectable inspirations! They have lovely petit fours . . . tiny cakes covered with pastel frosting in rum, peppermint, or sherry flavors . . . and topped with flowers. They're delicious as well as decorative. The children will love rabbit-shaped cookies . . . plain or with pastel icing . . . and everyone will enjoy the rich, flaky, Danish coffee cake and hot cross buns. They'll also decorate cakes with pretty Easter motifs if you order immediately.

Lovely flowers are a part of Easter. You'll want fresh-cut spring flowers for the table . . . plants to send as gifts, and corsages. If you place your order at BANY'S, you may be sure of getting really fresh flowers . . . tastefully arranged . . . and you'll have a wide choice. They have lily, hydrangea, tulip, azalea, and lily-of-the-valley . . . among others . . . in prettily decorated pots . . . and they also do a very artistic job on corsages and cut flowers.

We found some wonderful aids to painless travelling at SHAIN'S. Doris's soap leaves, small, flat sheets which are used like soap, come in a leatherette case with refill for 75c . . . handy for shopping trips, too. The Lavista sponge is a disposable washcloth, which starts out as a small, round disc, and expands to usable size when dropped in water. A package of eight is 75c. They have some awfully nice cosmetic cases . . . made of a durable checked rayon, they're flat and compact, have an inner zipper pocket . . . 98c.

With spring cleaning upon us, it's good news that this Thursday, Friday, and Saturday there will be a demonstrator in McBRIDE'S to show you how to use Mystic Beam upholstery and rug cleaner. This will be well worth seeing. Also worthy of your attention in this shop is the Lazy Daisy dust pan, a long-handled gadget loaded with metal pan, wheels, and a brush that whisks up dirt and debris from any surface. 85c. The metal utility cart is a find too . . . a 4-wheeled frame supports a large, metal basket . . . handy for laundry or toting lines and cleaning equipment around. 53c.

There's a wonderful new line of smart stationery at the INDIAN CRAFT & GIFT SHOP; and it comes in an amazing choice of single or double sheets, airmail or heavier weight . . . many colors, some with flower trims . . . personal post cards, too. With name imprinted, it's L&S a box. They have a fine photographic department in this shop, now. Enlarging service to 16 x 20 inches . . . and much excellent equipment, such as drivers, tripods, electronic timers, and the latest Weston Master exposure meters. Howard P. Estes will help and advise beginners.

It's rumored that men are having quite a struggle finding clothes these days. MORTIMER'S have solved the problem of socks with a fine, wide selection. They have shrink-proof ones of soft, but sturdy wool, one-length, in white, they're 85c. Longer lengths, in colors, are 1.75 . . . and they have other wool socks at 1.25 . . . in maroon, tan, navy, or brown. These are mostly 6 x 3 rib . . . and the same rib in lace is 45c, 45c and 1.00. You'll find a good choice of rayon socks, too, in the same prices.