

The Birmingham Eccentric

PART TWO

The only way to obtain and secure permanent peace is for the nations of the world to respect, admire one another. A nation that respects borders is helping to start another war. Along with the women of Good Will, our aid finds an opportunity to find board and room.

SIXTY-NINTH YEAR—NO. 4

BIRMINGHAM, OAKLAND COUNTY, MICHIGAN, THURSDAY, APRIL 18, 1946

\$2.00 PER YEAR (In Oakland County)—SINGLE COPIES, 5c

Remodelled Farmhouse

Ideally located for the man whose business address is on the west side of Detroit, this grand old farmhouse at Weston is easily accessible. The 25 acres on which it stands is a fertile piece of soil and enough land for farming on a small scale or for pasturing the horses. About 35 fruit trees, mostly Red Delicious, insure plentiful table fruit, with enough left over to market.

The house is an exceptionally well built one and has been modernized sufficiently to make it a most comfortable home. There are four bedrooms and bath, with space for a second bath roughed in. All the first floor rooms are large and roomy. The trim is bird's-eye maple and the oak floors on the ground level are new.

Mechanically, there's little to be done, for the furnace is a new one, with motor driven fan attached. The roof is in good shape and the paint job, too, is a recent one.

Other buildings include the 40 x 15 foot chicken house, a garage, tool house and a large old barn which has some beautiful hand hewn timbers in it.

This is the kind of home which would readily sell for over \$20,000 if it were located in Bloomfield or Birmingham. For the man who drives to the West side—and it's on the 27 mile circle—it's a real bargain at \$15,000. See it soon!

CALL

MAX BROOCK INC.

REALTORS

112 S. WOODWARD BIRMINGHAM 1212

Bits of Birmingham

In a personal effort to "do something" about low-cost housing for veterans, William W. Lyman, Jr., West Long Lake, Bloomfield Hills, has sent a printed argument to every member of both houses of Congress, and to leading newspaper, magazine and radio concerns throughout the nation. Along with his printed piece he has affixed a small photograph of a rather tiny house in Birmingham; he states, in reference to the picture, "\$9,000—for this?" The house appears to be like one of those pre-war jobs that might sell for approximately \$4,000. Mr. Lyman asks Congress to do something for veterans, as well as other Americans, in the way of good low-cost shelter. He asks for a price ceiling on every home. "It's time now to act!", concludes Lyman's printed argument; "this is not a problem of advanced economic—it's elementary common sense."

Everybody in Birmingham loves the across the street trees but every now and then trees have to give way to match of progress. This happened this week when, after a public hearing, a tree was ordered removed so that a driveway might be widened. The tree will be replaced with another near the drive entrance. On May 20 there will be a hearing on the proposed removal of trees along Willits street, between Woodward avenue and Bates street. There are 12 trees, Gordon Court writer of business guidance programs and lots of other things has turned his attention to a radio spot, based on the life of his family at their Birmingham home. He is titled the "Hi-Pop" and it will be given over the Mutual Broadcasting Company system this evening from 9:30 to 10 o'clock. Locally it will be heard over Station CKLW. Mr. Coffin said today about his family he told this Wanderer, "well, we have two sets of twin boys, a couple of couples of dogs, two cats, a pair of rabbits, some rats, gophers, and even a Praying Mantis up in the attic. So Birmingham folks who are stay-at-home on Saturday nights may be hearing some stories and "goings-on," as the Coffin call it, of happenings right here in Birmingham."

Never let it be said that The Eccentric isn't recognized for its pulchritudinous women employees. In testimony of this fact, Ruth Merritt, 19-year-old daughter of the William Merritts of 21260 West 12 Mile road, has been notified by the editor of "Revela Report" that she has been selected as "Miss Second Battalion" of the 8th Infantry, stationed at Fuson, Korea. She was informed that if her picture wins the regimental contest, it will be published in the

Birmingham Woman New Nutrition Leader For County Red Cross

Mrs. Layton L. Northrup, Birmingham, has been appointed chairman of nutrition for the Oakland County Chapter American Red Cross according to C. G. Rudderham, chapter chairman. Mrs. Northrup is a graduate in Home Economics of the University of Chicago, has taught dietetics in Chicago and is an authorized nutrition instructor for the local chapter.

A Red Cross nutrition program is a long range continuous program of education developed because the American Red Cross is concerned with the improvement of health and with the prevention of suffering and disabilities. Mr. Rudderham states, "Red Cross is engaged in nutrition education because application of modern nutrition knowledge is essential to a widespread movement in public health."

Mrs. Karl Bailey, Bloomfield Hills, was former nutrition chairman and as such organized many classes for which she secured instructors. She was also responsible for training the canteen corps of the chapter.

Those notices of re-registration many Birmingham residents are receiving through the mails these days are to be returned to the Office of the Board of Education at the Hill School. A number of persons have been signing the card and mailing it to Miss Irene Hanley, the City Clerk, who in turn must forward them to the Board of Education. "It would help me if you pointed out to the public just where these notices should be returned," Miss Hanley told this Wanderer, Monday.

"We love all its bumps and holes, and don't want it changed," declared Miss Mabel Tunney, 574 Harmon, as she voiced her opposition to the proposed improvement of Harmon street to the city fathers.

G. O. P. Chairman

Rep. B. Carroll Rees of Tennessee, veteran of 28 years in the House, is new chairman of the Republican National Committee. He is 58, and is the first G. O. P. chairman from a southern state.

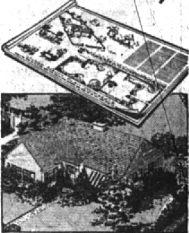
Gift From America



This little lad in Eastern Slovakia, one of the most devastated regions of Europe, eagerly tries on his new shoes, a gift from America. The shoe on his left foot shows how badly he needed them. Now if he can just find some pants—

largest GI newspaper in Korea. Ruth's brother, Paul, entered her picture in the battalion contest. Ruth has been an employee of The Eccentric since last August.

Give your home a Lovelier Landscape



Start now with the **VIGORO Beauty Plans**. Given with a 100 lb. bag of Vigoro!

- Contain over 30 planting arrangements and ideas!
- Tell you how to build and maintain a lawn!
- Tell what flowers, trees and shrubs to plant for each botanical season.
- Designed by one of America's foremost landscape architects!

McBride Hardware
E. W. Osborne Co.
Birmingham Hardware

Homes for Sale

Certainly we have them and a likely selection too! Modern up-to-the-minute ranch houses, or, if you like—the atmosphere that "being lived-in creates."

NEW ENGLAND COLONIAL

This issue on Dorchester Rd., a wide tree-lined street, will suit those who want gracious living and a proper environment for antiques or period furniture. 4 bedrooms, 2 baths. Fine screen porch and lovely garden. Easy access to Adams School; rapid transit and shops. Immediate possession.

BLOOMFIELD VILLAGE

Irresistible is this Early-American, 1937 built, 5 bedrooms, 3 baths and library. Car Wood heats it for \$100. Beautifully landscaped. Grounds include play-house. School 3 blocks away.

NEAR ADAMS SCHOOL

This frame Colonial has 3 bedrooms, and a nursery. All white. You'll like the large-sized living rm. and the convenient 2-car attached garage. Insulated, storm windowed. Stoker heating plant gives true economy. Carpeting incl. \$15,750.

RANCH HOMES

We have two in wooded settings with groundage running from 4 to 6 acres.

Listing (A)—A gem in Colonial design with 2 bedrooms, also a Guest House. Exquisite appointments and detail, like a jewel in a princely setting. \$29,500.

Listing (B)—With a setting by the brook—3 bedrooms, 3 baths, also a Guest House. Completely equipped throughout. There is really nothing comparable to this and the price has just been reduced.

A call to any of our representatives will give you Immediate Attention

SNYDER BUCK & BENNETT

THEATRE BUILDING BIRMINGHAM 1400

Village Nursery School
FOR TOTS 2 TO 5

- Quiet Country Atmosphere
- Spacious Play Yards Completely Fenced
- Every Provision Made for Happy Childhood Experiences
- Four Well Trained Teachers
- Transportation Available

PHONE BIRMINGHAM 3409-W3

Painting & Decorating
with Distinction for those who care . . .

CUSTOM DECORATORS
Inc.

PHONE B'HAM 322

A Better Cash Price FOR YOUR CAR OR EQUITY—IN ROYAL OAK—
605 N. Main Phone LI 2-1414
Downey Motors
Our Buyer Will Call

What is Lochslea? Lochslea is a dream come true . . .

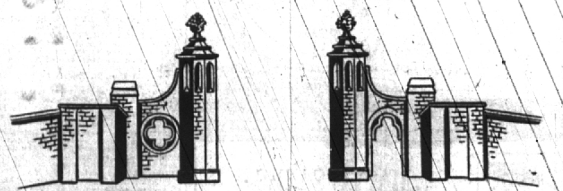
FORTY YEARS AGO a man picking his way through a densely wooded path, climbed to the top of a wind-swept hill and saw . . . spread out before him . . . a lovely, tranquil scene. Before his eyes lay a panorama of gentle hills, their sides lush with the varying greens of spring . . . at their bases, the deep blue of lakes sparkling in the sun.

Deeply he breathed the sweet-scented air of the woods and lakes . . . and as he watched the peaceful scene stretched wide before him, into his mind crept a dream. He saw the tree-shaded roads winding 'round the bosoms of the hills. He saw the chimneys of homes of brick . . . and stone rising behind the wooded vistas and surrounded by lovely gardens. Over on a sun-kissed knoll a church thrust its graceful spire towards the azure sky.

ming . . . months of painstaking labor . . . that dream is merging into reality. Lochslea, surveyed and subdivided, is open to the discriminating.

Located in the beautiful, rolling country northwest of Detroit, Lochslea—one of four subdivisions now being developed by the Edwin S. George Foundation—comprises three hundred acres of woodland, orchards and lake frontages.

Complete details, plat plans and restriction information are available. See your broker, or call us for full particulars.



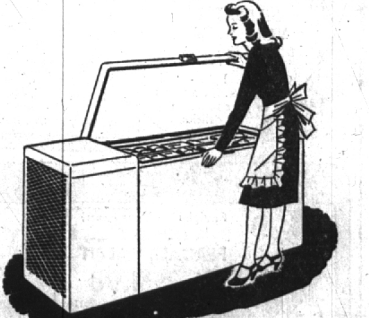
Edwin S. George Foundation
BLOOMFIELD HILLS PONTIAC 2-9491

Home Loans

OUR PLAN PROTECTS your home, family and yourself with an orderly, economical way of paying off the mortgage on YOUR HOME

ASK US ABOUT IT TODAY!

BIRMINGHAM FEDERAL
SAVINGS AND LOAN ASSOCIATION
Member of Federal Home Loan Bank System and Federal Savings & Loan Insurance Corporation



See the new **HARDERFREEZ** Home Locker—in our showroom. Then decide to have one of your own—to protect and keep frozen foods right in your own home! It's simple and easy. You preserve all food values—make big savings—have better food in all seasons.

Come in or write for further information
Open Wed., Thu. and Fri. Evenings Until 9:00

PHONE PONTIAC 4 2597
HOME EQUIPMENT CO.
1661 Telegraph Road • P. O. Box 196, Pontiac, Mich.
1/2 Mile South of Orchard Lake Road