

Thankful China

Men in Service

James Herbst Made Staff Sergeant

HEADQUARTERS PANAMA CANAL DEPARTMENT—James H. Herbst, son of Mrs. Marguerite C. Herbst of 972 Oxford Drive, Birmingham, Michigan, has been promoted to Staff Sergeant, it is announced by Sixth Air Force Headquarters at Albrook Field, Canal Zone.

S/Staff Sergeant Herbst is stationed at the Rio Hato Army Base, where he is assigned to personnel work.

He entered the Army in October, 1942, and arrived in this area September 20, 1943. Prior to entering the Army, he was a dental student at the University of Michigan.

Lt. Ernest L. Baldwin II, has returned to Camp Le Jeune, N. C. after spending a 2-week leave with his parents, Mr. and Mrs. E. R. Baldwin, 592 Lakeside drive.

JOHN CORSON IS HOME
First Lt. John Corson, home from many months of fierce air battle experience in France, Belgium and Germany, says he anticipates a discharge within a few weeks. His duty in four major campaigns was attack reconnaissance and he wears four battle stars and the Air Medal with ten Oak Leaf Clusters. His brother, First Lt. Bruce Corson, who was in the office of Chief of Ordnance in Detroit for more than a year, has been ordered to the Pacific for overseas duty. The two men are sons of City Manager and Mrs. H. H. Corson, 336 West Maple.

Cpl. Quentin Brelsford, son of Mr. and Mrs. Harry E. Brelsford, 212 Pilgrim road, arrived in Boston August 18th, aboard the first ship to be turned back from the Pacific after V-J day. He spent a week with his family at their cottage at Hale, Mich., and at present is visiting friends at Ohio Wesleyan University, Delaware, Ohio. Quentin will spend the rest of his furlough here in Birmingham with his parents, before reporting at Camp Grant, Ill.

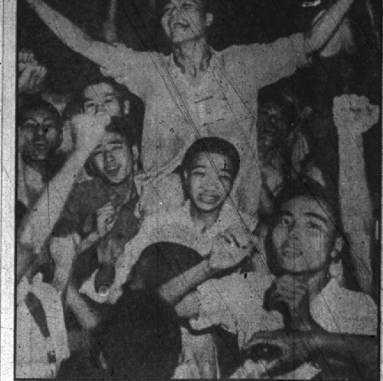
The Jay Shop Moves To Its New Home At 155 North Woodward

The Jay Shop today was going business in its new location at 145 North Woodward avenue. This women's accessory store is one of the several stores which have moved to new homes this summer. It formerly was located at 133 North Woodward.

The new quarters provide much additional space and as a result additional lines of merchandise are being added and stocks are being increased.

The store is operated by Mr. and Mrs. James Grant, 1244 Davis. But during a lot of the war period Mrs. Grant has run the place for her husband has been on duty for Uncle Sam. Cpl. Grant has been home on a two-week furlough from Camp Bowie, Texas, and is leaving again Sept. 10 to return to duty.

He was overseas 13 months, 11 of them almost continual battle on the European front. He wears the ETO and ATO ribbons, Purple Heart, Bronze Star Medal, Good Conduct Ribbon, and four battle stars. He served in the mechanized cavalry.



Probably no other Allied nationals are as thankful over defeat of Japan as the Chinese, for there was a decade of war and brutal invasion. This scene of surrender being celebrated in the streets of Chungking typifies China's immense relief.

Highland Park's Junior College to Open Year Sept. 10

Highland Park Junior College, which has a number of students here in or near Birmingham, will begin its twenty-eighth year with the opening of classes on September 10.

The College is a member of the North Central Association of Colleges and Secondary Schools and its credits are transferable to colleges belonging to that organization.

This year the College is offering a special program for Veterans on college and high school levels. An effective program for counseling and placement has been set up to aid returned veterans who may wish to continue their education. The College is fully accredited by the State Office of Veterans' Affairs and the Federal Veterans' Association.

Courses in aeronautics, secretarial training, home economics, art, and music will be offered in addition to the courses in liberal arts and the pre-professional courses regularly given by the College.

Registration will take place on September 6, 7, and 8; classes begin on September 10.

Adult Evening School To Open at Ferndale

The Board of Education, Ferndale, is offering the public an adult evening school program. The first term, which runs thirteen weeks, starts the week of September 17th. All classes, unless otherwise stated, will be in Lincoln High School.

This gives the adult public an opportunity to take courses in business training, crafts, dramatics, art, music, home and family living and self improvement.

Persons interested may call or write the office of Adult Education at 130 E. Nine Mile rd., Ferndale. Telephone Lincoln 2-1258.

Atomic Bombs Are Still Being Made



This is one of the tightly guarded factories at Oak Ridge, Tenn., where the atomic bomb was developed—and is still being made, President Truman said. This is one of the eight plants of the Clinton Engineer Works, a government reservation covering 59,800 acres.



Three men who played major roles in developing the atomic bomb: Dr. Vannevar Bush, left, Director of the Office of Scientific Research; Dr. Niels Bohr, Danish physicist and Nobel Prize winner for atomic research; Mai-Guen...

FINEST MICHIGAN ELBERTA PEACHES! Can Now!

The Michigan Elberta Peach crop is coming! Now is the time to turn to A&P for those sweet, juicy beauties, just right for canning. The price is low, the quality is high.

\$3.79 Bushel
4 Lbs. 35c

FOR CANNING Bu. \$1.78
2 Lbs. 19c

FOR CANNING 1/2-Bu. \$3.49
2 Lbs. 27c

Box \$6.40
Lb. 15c

CALIFORNIA Oranges . . . 5 lbs. 59c
EASTERN SHIRE Potatoes . . . \$1.79
LARGE MICHIGAN Celery . . . 2 stalks 19c
SWEET CORN . . . 2 ears 29c
LONG GREEN Cucumbers . . . 2 Lb. 3c

SAVE ON CANNING SUPPLIES
MASON JARS Quarts . . . Doz. 60c
LIDS . . . 3 Boxes 25c
U. S. BROS. RUBBERS . . . 3 Boxes 10c
WAX . . . Pkg. 12c

HOME-GROWN GREEN BEANS
OREGON PRUNE PLUMS
FANCY CALIFORNIA BARTLETT PEARS

Fine Meats are Again Plentiful at Your A&P

FANCY STEWING CHICKENS . . . POINT FREE . . . Lb. 41c
SHOULDER CUT VEAL ROAST . . . 2 PTS. PER LB. . . Lb. 26c
GRADE "A" BEEF CHUCK ROAST . . . 2 PTS. PER LB. . . Lb. 26c
NUTRITIOUS BEEF LIVER . . . 4 PTS. PER LB. . . Lb. 36c
LEG VEAL ROAST . . . 3 PTS. PER LB. . . Lb. 30c
GRADE "A" BEEF TONGUES . . . 2 PTS. PER LB. . . Lb. 35c

LEAN Ground Beef . . . 2 PTS. PER LB. . . Lb. 26c
Short Ribs . . . 1 PT. PER LB. . . Lb. 19c
Rib Roast . . . 1 PT. PER LB. . . Lb. 33c
Ground Veal . . . 4 PTS. PER LB. . . Lb. 29c
Assorted Luncheon Meats . . . 2 PTS. PER LB. . . Lb. 46c

VEAL Shoulder Chops . . . 2 PTS. PER LB. . . Lb. 26c
RIB Lamb Chops . . . 3 PTS. PER LB. . . Lb. 42c
GRADE "A" RIB ROAST . . . 4 PTS. PER LB. . . Lb. 29c
GRADE "A" Leg of Lamb . . . 4 PTS. PER LB. . . Lb. 37c
PREPARED Breast of Veal . . . 1 PT. PER LB. . . Lb. 19c

FRESH CAUGHT SHRIMP . . . Lb. 38c

DRESSED Sea Trout . . . Lb. 39c
Blue Fish . . . Lb. 15c
Herring . . . Lb. 15c

DRESSED Norfolk Spots . . . Lb. 35c
DRESSED Whiting . . . Lb. 17c

GREAT VALUES IN A&P DAIRY DEPARTMENT

WISCONSIN Bleu Cheese . . . Lb. 43c
WISCONSIN Swiss Cheese . . . Lb. 44c
CHED-D-BIT Cheese Food . . . 2-Lb. Lb. 70c

WILLOWBUTTER Butter . . . Lb. 46c
PHILADELPHIA Cream Cheese . . . 3-Oz. Pkg. 10c
KRAFT OR NORDEN Swiss Cheese . . . 2-Oz. Pkg. 37c

SAVE TIME... SAVE MONEY AT A&P!

GREEN GIANT Peas . . . 28-Oz. Can 18c
IONA EARLY JUNE Peas . . . 28-Oz. Can 11c
CONSOLE Tomatoes . . . 28-Oz. Can 20c
DEL MONTE DICED Beets . . . 16-Oz. Glass 13c
QUE-QUE CUCUMBERS Pickles . . . Quart 22c
IONA CUT Green Beans . . . 12-Oz. Can 12c
ARMOUR'S TROUT . . . 3-Oz. Can 42c
IONA YELLOW CLING HALVES Peaches . . . 28-Oz. Can 32c
LINCOLN WHOLE UNPEELED Appriots . . . 28-Oz. Can 21c
ARMOUR'S GREEN CACTUS PINEAPPLES . . . 34-Oz. Can 23c
DEL MONTE Pineapple Juice . . . 16-Oz. Can 13c
BORDERS HOMO Towels . . . Lb. 59c

CARRIATION Malted Milk . . . Lb. 39c
RICH CREAMY SWEETENED CONDENSED MILK . . . 3 Lb. 66c
MENKES VELVET CAKE AND PASTRY Flour . . . 5 Lbs. 39c
AUNT JEMIMA Pancake Flour . . . 28-Oz. Pkg. 10c
IDEAL DUFFS Pie Crust . . . 28-Oz. Pkg. 12c
Gingerbread Mix . . . 16-Oz. Pkg. 20c
SALT . . . 10 Lb. 18c
CHERRY CIDER Vinegar . . . 1 Qt. 29c
CERRIS BABY FOODS . . . 4 1/2-Oz. Pkg. 28c
OLSON'S GLEASER . . . 2 1/2-Lb. Pkg. 15c
IDEAL DUFFS GLEASER . . . 2 1/2-Lb. Pkg. 16c
WATER SORTER Glimdene . . . 2 1/2-Oz. Can 15c
36-MONTH TEAM Borax . . . 2 1/2-Oz. Boxes 28c

BUY NOW FOR OVERSEAS MAILING!
Last Date for Overseas Shipment is Oct. 16

Jane Parker Fruit Cake . . . 3 Lb. \$1.65

JANE PARKER—BAR SHAPE Fruit Cake . . . 3 Lb. 86c
Vienna Bread . . . 3 Loaves 32c
MAVEL'S LOG Whole Wheat Bread . . . 3 Loaves 32c
RYE BREAD . . . 3 Loaves 32c
MAVEL CRASHED WHEAT BREAD . . . 3 Loaves 32c

Flavor-Tested Teas
TO MATCH YOUR FINEST COOKING

Smooth, rich flavor and aromatic fragrance! Fruit, Mocha, Nutmeg and Orange are flavorings brought to you of Day Tea's finest cooking—the nation's largest value of tea!

FULL-FLAVORED AND THICKER MAYFAIR . . . Lb. 39c
DELI-CATE AND FRAGRANT NECTAR . . . Lb. 33c
OUR NATIONAL FAVORITE OUR OWN. . . . Lb. 31c

NEW IMPROVED WHITE HOUSE
BETTER FOR BABIES
WHITENING MILK

Now fortified with 400 UNITS of SUNSHINE Vitamin D₂ Per Pint

4 Tall Cans 36c
NOW POINT FREE

RENNET TABLETS JUNKET . . . 11c FOR ICE CREAM

MIGHTY-SOFT NORTHERN TISSUE . . . 4 Rolls 18c

Del Monte Family Garden PEAS . . . 20-Oz. Can 15c

SIDELY'S CHOPPED SAUER KRAUT . . . 27-Oz. Can 17c

WARRANTY WHITE MEAT TUNA FISH . . . 7 Oz. Can 40c