



Adm. Chester W. Nimitz

Gen. Henry H. Arnold

Gen. Dwight D. Eisenhower

Gen. George C. Marshall

Adm. William D. Leahy

Adm. Ernest J. King

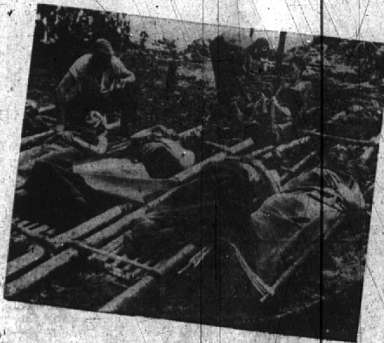
Gen. Douglas MacArthur

These men can tell you why the 7TH WAR LOAN is the BIGGEST yet!

YOU ARE being asked to lend more money than ever before—in the 7th War Loan. These men can tell you why. They can tell you of giant ships ready to slide down the ways this year. They can tell you of a whole new air force in the building—huge new bombers and fast new jet-propelled planes coming off the lines by thousands.

They could show you why it is cheaper and quicker to give our Pacific Forces entirely new equipment sometimes—instead of shipping tanks and guns from Europe.

They can, in short, show you 101 ways in which your dollars are needed more than ever to bring America's might to its full strength—so that we may crush our foe the faster, make an end of killing, and bring our men back home.



Will you tell these men "I can't afford to buy my share"?

THE GENERALS and admirals can show us why our money is needed—more money than before.

But other men can show us something, too.

They're the men with twisted, crippled limbs... with clever iron hooks instead of hands. The blind men... the men with scarred, seamed faces. And perhaps worst of all, the men with blasted, darkened minds.

They can show us, clearly, how small is any sacrifice we make in lending money.

If you have an income, whether from work, land, or capital, you have a quota in the 7th War Loan. Find out what that quota is—and make it!

FIND YOUR QUOTA... AND MAKE IT!		
IF YOUR AVERAGE INCOME PER MONTH IS:	YOUR PERSONAL WAR BOND QUOTA IS: (CASH VALUE)	MATURITY VALUE OF 7TH WAR LOAN BONDS BOUGHT
\$250	\$187.50	\$250
225-250	150.00	200
210-225	131.25	175
200-210	112.50	150
180-200	93.75	125
140-180	75.00	100
100-140	37.50	50
Under \$100	18.75	25



ALL OUT FOR THE MIGHTY 7TH WAR LOAN

This advertisement contributed by

The Birmingham National Bank

"Birmingham's Community Bank"

MEMBER FEDERAL RESERVE SYSTEM

MEMBER FEDERAL DEPOSIT INSURANCE CORPORATION