

CHURCH SCHOOL REOPENED The church school of Christ Church Cranbrook reopens for the winter term on Sunday, Jan. 7, at 10:50 a. m. The lessons for the term are based on a study of the Gospel of Matthew and class work will be supplemented with slides and movies in accordance with a new experiment in visual education.

Start the New Year Right! You are invited to attend

The Communion Service

in the FIRST BAPTIST CHURCH

Willits and Bates Sts. SUNDAY, 11:00 A. M.

You will enjoy this lovely Communion Service built around the general theme: "The New."

The choir will sing the Anthem: "How lovely are the messengers," by Messelison.

Dr. Melvina W. Crump, Pastor

Church News

First Church of Christ, Scientist and Bible Society. "God" will be the subject of the Lesson-Sermon in all Christian Science Churches throughout the world on Sunday, January 7.

The Golden Text (Isaiah 45:2) is: "I have called me, and he has saved, all the ends of the earth: for I am God, and there is none like me."

Among the Bible citations in this program (Psalms 91:1): "And they that know thy name, Lord, have not forsaken thee that seek thee."

Correlative passages to be read from the Golden Text, Science textbook, "Science and Health with Key to the Scriptures" by Mary Baker Eddy, include the following (46:1): "God is incorporeal, divine, supreme, infinite Mind, Spirit, Soul, Principle, Life, Truth, Love."

Franklin Community Church. Clifton G. Hoffman, Pastor. Sunday, 10 a. m.—Sunday School and Junior Church, Grades II to IV.

5:30 p. m.—N.E.O. meets at the church, 7:30 p. m.—Bible study at the church, 7:30 p. m.—The adult discussion group meets at the home of Mr. and Mrs. Vernon P. Fisher in Woodruff Farms.

Christ Church Cranbrook. The Rev. Charles H. Gaidgen, Rector. The Rev. William S. Hill, Assistant Minister.

Go to Church in 1945 SUNDAY, 7:45 P. M. Hear REV. A. J. TURVEY—Speaker

"Can We Face the Future and Win the Victory?" Sunday 10:00 a. m.—Communion and Sermon

REV. LOLA MARION SPEAKING ON: "The Heavenly Jerusalem"

10:00 to 12:00 Noon—Children's Church and Bible School 11:20 to Noon—Adult Bible Classes 6:00 p. m.—Christian Endeavor for All Ages

TONIGHT—THURSDAY—8:00 P. M. HEAR DR. LELAND L. MARION "God's Message for This Day"

Help Make This Year A Go-to-Church Year Tune In Our Christ Centered Programs WCAR Every Week-Day—8:15 to 8:45 a. m.

THE CHRISTIAN TEMPLE 295 So. Woodward Nondenominational The Place of Friendly People

A JANUARY SERMON SERIES "THERE ARE FOUR TYPES OF SUFFERING" (Made more acute by the eventualities of this war.) ELEVEN O'CLOCK

Jan. 7—"PAIN"—Life is made up of many painful experiences—How do you handle yours?

Jan. 14—"FEAR"—Its effects are everywhere. It destroys poise and faith.

Jan. 21—"GUILT FEELINGS"—A principal reason why many turn from the church.

Jan. 28—"LONELINESS"—An emotion which frustrates some and creates adventurers and heroes out of others.

First Methodist Church A. F. RUNKEL—Minister

First Methodist Church. Morning Worship—11:00 a. m. Sermon: "The Fallows of Time."

United Brethren Church. A Friendly Church with the Gospel Message. Held in Pierre School Building.

Embury Methodist Church. Renaissance and Woodward. Rev. Max G. Moore, Minister.

Holy Name Catholic Church. Harmon at Woodland. Rev. Fr. David J. Duggan, Pastor.

St. Hugo of the Hills. Oxyde Road. The Rev. Daniel McMillan, Pastor.

St. James Episcopal Church. Rev. Walter Dracemore, Rector.

St. James Episcopal Church. Rev. Walter Dracemore, Rector. Phone: 159, Rectory.

St. James Episcopal Church. Rev. Walter Dracemore, Rector. Phone: 159, Rectory.

St. James Episcopal Church. Rev. Walter Dracemore, Rector. Phone: 159, Rectory.

Careful Storage Preserves Seeds For Next Season

Now that Christmas is past and most Birmingham folk are looking ahead to the time when the weather is a thing of the past and the plowman comes to ask about getting the garden ready, attention might well be called to seeds for that 1945 Victory Garden.

John Gaffill, Birmingham Victory Garden chairman, says right now is a good time to inspect that left in the garage or basement with a view of saving as much seed as possible for next spring.

John Gaffill, Birmingham Victory Garden chairman, says right now is a good time to inspect that left in the garage or basement with a view of saving as much seed as possible for next spring.

John Gaffill, Birmingham Victory Garden chairman, says right now is a good time to inspect that left in the garage or basement with a view of saving as much seed as possible for next spring.

John Gaffill, Birmingham Victory Garden chairman, says right now is a good time to inspect that left in the garage or basement with a view of saving as much seed as possible for next spring.

John Gaffill, Birmingham Victory Garden chairman, says right now is a good time to inspect that left in the garage or basement with a view of saving as much seed as possible for next spring.

John Gaffill, Birmingham Victory Garden chairman, says right now is a good time to inspect that left in the garage or basement with a view of saving as much seed as possible for next spring.

John Gaffill, Birmingham Victory Garden chairman, says right now is a good time to inspect that left in the garage or basement with a view of saving as much seed as possible for next spring.

John Gaffill, Birmingham Victory Garden chairman, says right now is a good time to inspect that left in the garage or basement with a view of saving as much seed as possible for next spring.

John Gaffill, Birmingham Victory Garden chairman, says right now is a good time to inspect that left in the garage or basement with a view of saving as much seed as possible for next spring.

John Gaffill, Birmingham Victory Garden chairman, says right now is a good time to inspect that left in the garage or basement with a view of saving as much seed as possible for next spring.

John Gaffill, Birmingham Victory Garden chairman, says right now is a good time to inspect that left in the garage or basement with a view of saving as much seed as possible for next spring.

John Gaffill, Birmingham Victory Garden chairman, says right now is a good time to inspect that left in the garage or basement with a view of saving as much seed as possible for next spring.

John Gaffill, Birmingham Victory Garden chairman, says right now is a good time to inspect that left in the garage or basement with a view of saving as much seed as possible for next spring.

John Gaffill, Birmingham Victory Garden chairman, says right now is a good time to inspect that left in the garage or basement with a view of saving as much seed as possible for next spring.

John Gaffill, Birmingham Victory Garden chairman, says right now is a good time to inspect that left in the garage or basement with a view of saving as much seed as possible for next spring.

John Gaffill, Birmingham Victory Garden chairman, says right now is a good time to inspect that left in the garage or basement with a view of saving as much seed as possible for next spring.

John Gaffill, Birmingham Victory Garden chairman, says right now is a good time to inspect that left in the garage or basement with a view of saving as much seed as possible for next spring.

John Gaffill, Birmingham Victory Garden chairman, says right now is a good time to inspect that left in the garage or basement with a view of saving as much seed as possible for next spring.

John Gaffill, Birmingham Victory Garden chairman, says right now is a good time to inspect that left in the garage or basement with a view of saving as much seed as possible for next spring.

John Gaffill, Birmingham Victory Garden chairman, says right now is a good time to inspect that left in the garage or basement with a view of saving as much seed as possible for next spring.

John Gaffill, Birmingham Victory Garden chairman, says right now is a good time to inspect that left in the garage or basement with a view of saving as much seed as possible for next spring.

John Gaffill, Birmingham Victory Garden chairman, says right now is a good time to inspect that left in the garage or basement with a view of saving as much seed as possible for next spring.

John Gaffill, Birmingham Victory Garden chairman, says right now is a good time to inspect that left in the garage or basement with a view of saving as much seed as possible for next spring.

John Gaffill, Birmingham Victory Garden chairman, says right now is a good time to inspect that left in the garage or basement with a view of saving as much seed as possible for next spring.

John Gaffill, Birmingham Victory Garden chairman, says right now is a good time to inspect that left in the garage or basement with a view of saving as much seed as possible for next spring.

John Gaffill, Birmingham Victory Garden chairman, says right now is a good time to inspect that left in the garage or basement with a view of saving as much seed as possible for next spring.

John Gaffill, Birmingham Victory Garden chairman, says right now is a good time to inspect that left in the garage or basement with a view of saving as much seed as possible for next spring.

John Gaffill, Birmingham Victory Garden chairman, says right now is a good time to inspect that left in the garage or basement with a view of saving as much seed as possible for next spring.

Strictly Fresh

A NEW low-calorie diet has been authorized to help overweight WACS reduce. What do they do in the Women's Army? ... They munch, munch, munch!

A Senate committee found that while our war production was prodigious, accumulated surpluses have actually hindered supply.

About this time every year people who believe in the adage that rules are made to be broken start living down to their principles.

The OPA has rule that dentists may prescribe additional rationed foods for patients requiring special diets.

It is now believed in armchair strategy circles that Hitler himself planned the German winter offensive.

"Mark the seeds carefully and store them in a cool, dry place. As much as is possible keep them in their original package."

"Mark the seeds carefully and store them in a cool, dry place. As much as is possible keep them in their original package."

"Mark the seeds carefully and store them in a cool, dry place. As much as is possible keep them in their original package."

"Mark the seeds carefully and store them in a cool, dry place. As much as is possible keep them in their original package."

"Mark the seeds carefully and store them in a cool, dry place. As much as is possible keep them in their original package."

"Mark the seeds carefully and store them in a cool, dry place. As much as is possible keep them in their original package."

"Mark the seeds carefully and store them in a cool, dry place. As much as is possible keep them in their original package."

"Mark the seeds carefully and store them in a cool, dry place. As much as is possible keep them in their original package."

"Mark the seeds carefully and store them in a cool, dry place. As much as is possible keep them in their original package."

"Mark the seeds carefully and store them in a cool, dry place. As much as is possible keep them in their original package."

"Mark the seeds carefully and store them in a cool, dry place. As much as is possible keep them in their original package."

"Mark the seeds carefully and store them in a cool, dry place. As much as is possible keep them in their original package."

"Mark the seeds carefully and store them in a cool, dry place. As much as is possible keep them in their original package."

"Mark the seeds carefully and store them in a cool, dry place. As much as is possible keep them in their original package."

"Mark the seeds carefully and store them in a cool, dry place. As much as is possible keep them in their original package."

"Mark the seeds carefully and store them in a cool, dry place. As much as is possible keep them in their original package."

"Mark the seeds carefully and store them in a cool, dry place. As much as is possible keep them in their original package."

"Mark the seeds carefully and store them in a cool, dry place. As much as is possible keep them in their original package."

"Mark the seeds carefully and store them in a cool, dry place. As much as is possible keep them in their original package."

"Mark the seeds carefully and store them in a cool, dry place. As much as is possible keep them in their original package."

"Mark the seeds carefully and store them in a cool, dry place. As much as is possible keep them in their original package."

"Mark the seeds carefully and store them in a cool, dry place. As much as is possible keep them in their original package."

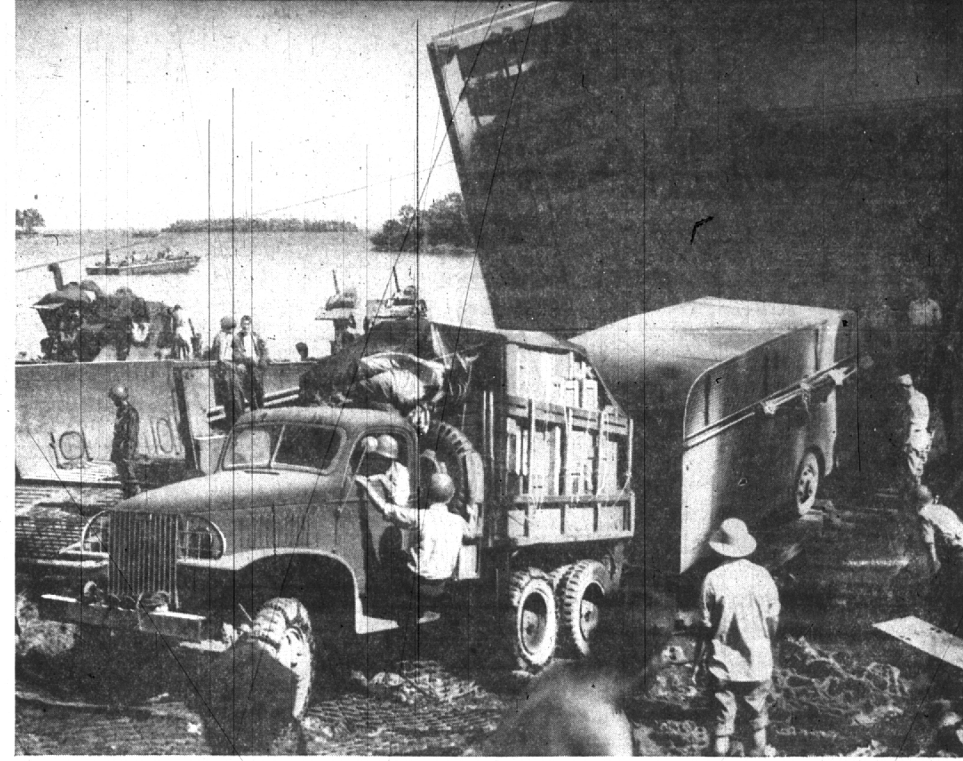
"Mark the seeds carefully and store them in a cool, dry place. As much as is possible keep them in their original package."

"Mark the seeds carefully and store them in a cool, dry place. As much as is possible keep them in their original package."

Here's What a SPENCER SUPPORT will do. It will relieve backache and fatigue due to wrong posture—give you energy! MRS. ILLA SEWELL, Authorized Health-Support Specialist, 685 PIERCE ST., PHON 2524

It's not too late to Insulate. Johns-Manville "Blown In" Rock Wool Insulation saves up to 30% fuel in winter. Makes your house 15° cooler in Summer. Ask for a copy of "Comfort that pays for itself." Johns-Manville (Home Insulation Division) 701 Murphy Building, 7 E. Grand Avenue, Highland Park 3, Mich. Birmingham phones 2808-916

PAYING THE WAY FOR THE BIG PUSH



GMC IS THE ARMY'S NO. 1 TRANSPORT TRUCK . . . YOU CAN HELP BUILD MORE OF THEM

Few civilians realize that millions of tons of supplies must be moved to the front before big offensives can begin. When you are told that a single army division uses up 3,000 tons of supplies in one day of action . . . that the drive to Berlin requires more than 2,000,000 gallons of aviation and motor fuel every day . . . you can begin to realize that the job of supply is a tremendous one. Every item, from meat to machine guns, moves at least part of the way from beachhead to battle line by military truck. Without these trucks, such as the GMC "six-by-six" above, our Armies would have little equipment with which to fight. Because more are wanted now, GMC Truck & Coach is asking you to help build the trucks that will pave the way for new offensives yet to come in Europe and the Pacific.

GET A WAR JOB and Stay on the Job. Victory depends on everyone, every day. Let time put a break on America's final drive for Victory. Whether you're working at GMC or on some other war job, stay on it every minute. Under war conditions, this is tough—but war is never easy. Reduce absenteeism and make time work for us—not the Axis. EVERY MINUTE COUNTS. Apply directly at the GMC Employment Office, 661 South Blvd. Open from 8:30 A.M. to 5 P.M., Monday through Saturday

A new way to WATERPROOF WALLS. FLORSHIELD. Contains Eplo. For basement walls—for all masonry walls, interior and exterior—brick, concrete, tile, flucco, stone, etc. Really waterproof—and real! In fact, it's a genuine new chemical development. Used on fence posts, buildings and industrial plants. LAWSON & SON 484 Forest Phone 111 FUEL AND BUILDERS' SUPPLIES

UNIVERSAL ELECTRIC MOTOR PHONES 4601 822 SO. WOODWARD DOMESTIC, COMMERCIAL AND INDUSTRIAL MOTORS REPAIRED and REBUILT

GMC TRUCK & COACH DIVISION General Motors Corporation HOME OF COMMERCIAL GMC TRUCKS AND GM COACHES . . . VOLUME PRODUCER OF GMC ARMY TRUCKS AND AMPHIBIAN "DUCKS"