

Mil-Pex Restaurant Sold To Detroit

John Summers, for years operator of a restaurant in Detroit, has purchased the Mil-Pex restaurant at 139 South Woodward from Mr. and Mrs. Richard Slack, and has already taken over the business. Mr. and Mrs. Slack plan to spend the winter in Florida.

Mr. Summers formerly operated Summers Good Food at 218 West Lafayette, in Detroit, selling that place some months ago. They reside on their large ranch on 18 Mile road.

"We plan to make a number of changes and improvements as quickly as we can," said Mr. Summers today, "and will add air conditioning within a short time. Mrs. Summers and myself will hold a formal opening after some of these changes have been completed. As to our fare, we plan to make it produce a lot of quality foods for the restaurant."

CERTIFICATE OF MERIT

Thanks of the Michigan Office of Civilian Defense for the fine work of the Birmingham Civilian Defense organization has been received by Chief of Posters John P. Hackett, present chairman of this year's task. Along with the letter from Capt. Donald S. Leonard, state director, came a certificate of merit, which will be framed and sent to our target man.

"Buying a home?" Look in the Eccentric Want Ads for a Good Bargain!

Now Zenith Lowers the Cost of Bone-Conduction Hearing

Now Available The New ZENITH BONE-CONDUCTION HEARING AID

With New Improved Zenith Model A-2-A, you get a hearing aid that is small, light, powerful, and gives you the most complete hearing aid available today. It is recommended by the best doctors.

A New Model—The time with features never before possible at this price! Exclusive Zenith "Santor Mount" automatically waxes your ear and pressure exceeds factory adjustment. Also means instant removal of instrument, allowing you to focus this instrument for different needs in varying surroundings, or conveniently as you focus binoculars!

3 New Models—Zenith Model A-2-A, Model A-2-B, Model A-2-C. Each model gives you the most complete hearing aid available today. Model A-2-A, \$49. Model A-2-B, \$59. Model A-2-C, \$69. All models complete, ready to use—warranted liberal service guaranteed.

Demonstrations Now Going On. Come in!

SHAIN'S DRUG STORE
West Maple at Pierce St.

A New Soft Water Service
We Install Our WATER SOFTENER and service it for only a few cents a day. FOR FURTHER INFORMATION PHONE Birmingham 1153-W OAKLAND SOFT WATER SERVICE CO. 917 Orchard Lake Ave. Pontiac, Mich.

DRIVE SAFELY
in all kinds of winter weather when your car is equipped with TRICO WINDSHIELD WIPER

Let Us Put One on Your Car Today
GENERAL AUTO SERVICE
Erich (Duke) Kerth
Oliver Cornwall
WOODWARD AT FOREST
PHONE 338

Lathrup Townsite News

The Woman's Club
Reports of Woman's club were read for the year ending 1945. Balance on hand, \$195.84; Mrs. James M. Campbell, treasurer, ways and means, \$93.20; Mrs. H. B. Hamill, chairman; post-war committee under Mrs. Nell R. Brannan sent boxes to disabled veterans to the amount of \$50; Mrs. H. E. Nash, chairman; an appropriation of \$50 will be used to make up Christmas baskets of food for the needy. The committee includes Mrs. A. B. Sutherland, Mrs. Kenneth Croy, Mrs. Robert Bailey, Mrs. Karl M. Doeren.

Following the business meeting a song festival of Christmas music was given by the Redford High School double sextette. The girls' voices are beautifully matched and so professional in tone and quality that it was difficult to believe they are amateurs.

The ten table was in Christmas greens with red tapers at either end and small figurines on the table. A miniature lighted church on a side table, having a box within and playing Christmas hymns. Each guest received gifts of candy tied in tinsel ribbon. The containers were made by the committee in charge under Mrs. Harry Perkins.

The annual Christmas party, sponsored by the Townsite Protective Association, will be Saturday, Dec. 15, at 8:20 p. m. in the Annie Lathrup school auditorium. A feature of the evening will be a charity game, the proceeds from which will go to the Redford High School family of three children, who live on Greenfield avenue. Volunteers from the Woman's club will assist in this game.

J. V. Bell of Bloomfield drive is in New York City this week visiting his parents.

Barium School To Present Its Annual Christmas Program

"The Christmas Carol," by Charles Dickens and dramatized by Julian Lee will be presented at the Barium Junior High School on Saturday evening, Dec. 20, at 8 p. m.

Characters are: Ebenezer Scrooge, Jim Patterson; Scrooge's nephew, Keith Little; Bob Cratchit, Bob Rogers; Ghost of Christmas Past, Ted Harper; Ghost of Christmas Present, Tim Reed; Ghost of Christmas Yet to Come, Marilyn Hart; Marley's Ghost, Edna Perry; Tiny Tim, Sally Carner; Mrs. Cratchit, Norma Lee Kass; Belinda Cratchit, Margaret Pinner; Martha Cratchit, Patricia Belfore; Peter Cratchit, Pat Miller; Fan, Margaret Ireland; Scrooge's nephew, Richard Blaisie; Mrs. Fred, Peggy McPhail; Mrs. Dilber, Nancy Beck; and a boy, 7 Maxwell.

Two Groups to Sing
Music for the program will be provided by a chorus, the "Girls' Glee Club" and a girls' group. Chorus numbers will be "Silent Night, solist Ward Abbott; "It Came Upon the Midnight Clear," "Hark! Herald Angels Sing;" "Oh, Holy Night," solist Carolyn Walters; "Good King Wenceslas," solist Edwin Martin and Bob Beals; "I heard the Bells on Christmas Day" solist Milly Chapman; "Joy to the World," "The First Noel;" and "O Little Town of Bethlehem."

Girls' Glee Club will sing "Jesus in the Manger" and "Once in Royal David's City."

The girls' group will do three carolings: "Here We Come A-Caroling;" "God Rest You, Merry Gentlemen;" solist Jane Mallory and Carolyn Abbott; and "Cherry Tree Carol," solist Virginia Bingham and Carolyn Abbott.

Public invited.

PECK'S Cash and Carry
Suits, Topcoats. \$1.09
CLEANED AND PRESSED
For Delivery
WOODWARD—NEAR MAPLE

MODERN FIREPROOF CONSTRUCTION
GAUKLER
Local and Long Distance Moving
STORAGE
BIRMINGHAM 10240
GAUKLER Storage Co.
9 Orchard Lake Ave. PONTIAC

SHAIN'S DRUG STORE
West Maple at Pierce St.

Obituary
Frank C. Heath, 66½ Shirley drive, died late Tuesday, Dec. 11, at Harper hospital, following a short illness.

He was born in Whitinsville, Mass., Dec. 20, 1874, and married Evelyn G. Murphy at Shrewsbury, Mass., Aug. 5, 1907.

Mr. Heath was a graduate of Worcester Polytechnic Institute, Worcester, Mass. He has been a resident of Birmingham since 1929, coming from Royal Oak, Mich. He was in the employ of the Federal Mogul Corporation of Detroit. He remained on the board of directors of this company after his retirement and started the Heath Nurseries at Southfield and 13 Mile roads.

He is survived by his wife, Evelyn; three sons, Norman M. and Frank M. of Birmingham, and Charles M. of Buffalo, N. Y.; a daughter, E. Clarence Heath, of Worcester, Mass.; and a sister, Mrs. Grace Browning of Manchester, N. H.

The Rev. W. Glen Harris of the First Presbyterian church will officiate at the funeral services on Friday afternoon at 2 o'clock at the Manley Bailey funeral home, 183 Oakland avenue. Burial will be at White Chapel Memorial cemetery.

Mrs. Annetta Bell McLaughlin, Mrs. Annetta Bell McLaughlin passed away on Sunday, Dec. 9, in Detroit where she had been in the hospital for some time.

Private services were held in the Manley Bailey funeral home on Monday afternoon with Mrs. Oosting, Christian Science reader, officiating. Burial was at White Chapel Memorial cemetery.

Surviving Mrs. McLaughlin are two daughters, Mrs. L. H. Eby of Birmingham and Mrs. Dale Sigdon of Warsaw, Ind.; and a son, Robert McLaughlin, of California.

DRIVE SAFELY
in all kinds of winter weather when your car is equipped with TRICO WINDSHIELD WIPER

Let Us Put One on Your Car Today
GENERAL AUTO SERVICE
Erich (Duke) Kerth
Oliver Cornwall
WOODWARD AT FOREST
PHONE 338

LOOKING FOR A PRACTICAL GIFT FOR THE HOLIDAYS?

GIVE DELICIOUS, WHOLESOME

Jane Parker

FRUIT CAKE

OVER 60% FRUITS AND NUTS

3 Lbs. \$1.65

1 1/2 Lbs. 85c

- JANE PARKER POTATO CHIPS** 5-oz. Can 29c
- LADY BALTIMORE SQUARE** Each 35c
- DELICIOUS FUDGE SQUARE** Each 37c
- JANE PARKER POUND CAKE** Each 29c
- SPANISH LOAF** Each 27c

- V-8 VEGETABLE COCKTAIL**
46-Oz. Can 30c
- MOTT'S APPLE SAUCE**
17-Oz. Glass 20c

- JACKSON DICED CARROTS** 70-Oz. Can 10c
- IONA CUT GREEN BEANS** 18-Oz. Can 13c
- SILVER FLOSS SAUERKRAUT** 12-Oz. Can 27c
- SAFORS FIG BITS** 36-Oz. Can 12c
- SAFORS NECTARINES** 22-Oz. Can 29c
- SUNHILL ROLLED OATS** 48-Oz. Pkg. 22c
- KELLOGG'S VARIETY** Pkg. 22c

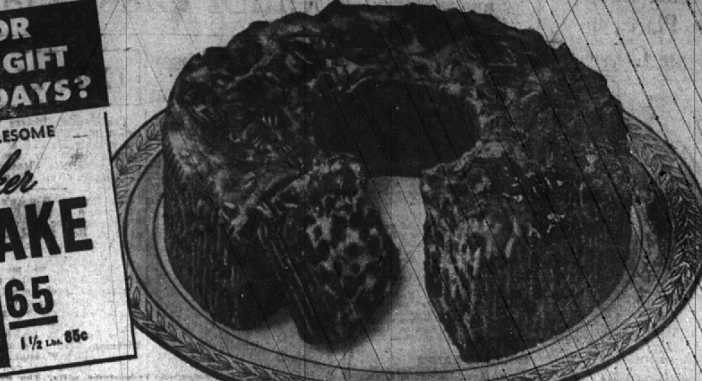
THERE'S NONE BETTER

WHITE HOUSE CONDENSED MILK

4 Tall Cans 34c

- ADP WHOLE KERNEL VACUUM PACKED CORN** 12-Oz. Can 13c
- HUNTS PREPARED PRUNES** 28-Oz. Glass 26c
- OCEAN SPRAY WHOLE CRANBERRY SAUCE** 14-Oz. Can 17c
- ANAGOLD FANCY ORANGE JUICE** 46-Oz. Can 48c
- RELIABLE PEAS** 20-Oz. Can 15c
- WHITE ROSE GRAPEFRUIT JUICE** 18-Oz. Can 13c
- CAMPBELL'S VEGETABLE SOUP** 11-Oz. Can 12c
- JACKSON COUNTY RED KIDNEY BEANS** 20-Oz. Can 10c
- EIGHT O'CLOCK COFFEE** 1-Lb. 8oz. Bg. 41c
- POPULAR BRAND CIGARETTES** Carton Plus Tax \$1.24

- SPIC AND SPAN CLEANSER** Amazing New Cleaner SAVES HALF THE TIME!
- MIGHTY SOFT NORTHERN TISSUE** 2 Rolls 9c
- PALMOLIVE BATH SOAP** 2 Bars 19c
- SWEETHEART SOAP** 2 Bars 13c
- IVORY SOAP** 2 Bars 9c



- GRADE "A" LEG O' LAMB** 37c
- FRYING OR ROASTING CHICKENS** 43c
- GRADE "A" BEEF CHUCK ROAST** 26c
- RUMP OR LEG O' VEAL** 30c
- FANCY STEWING CHICKENS** 38c
- FRESH GROUND BEEF** 26c
- SHOULDER VEAL ROAST** 26c
- NUTRITIOUS GOLF LIVER** 69c
- SHOULDER LAMB CHOPS** 37c
- COMPLETELY DRESSED HERRING** 18c
- SMOKED SALMON** 42c
- SMOKED SALMON WHITEFISH** 41c
- FOR BRAISING BEEF SHORT RIBS** 19c
- ASSORTED MEAT LOAVES** 46c

- SWEET JUICY FLORIDA ORANGES** 8-Lb. Mesh Bag 65c
- SEEDLESS TEXAS GRAPEFRUIT** 10-Lb. Mesh Bag 59c
- FRESH CRISP PASCAL CELERY** Lg. 24 Size Stalk 19c
- ALL VARIETIES APPLES** 2 Lbs. 27c
- SOUTHERN GROWN TOMATOES** 40-Lb. Bbl. \$1.65
- PUERTO RICAN YAMS** 4 Lbs. 41c
- IGORIC HEAD LETTUCE** 11c
- MICHIGAN YELLOW ONIONS** 10-Lb. Bag 59c
- MAINE POTATOES** 40-Lb. Bbl. \$1.65
- CRISP RADISHES** 4 Bchs. 22c
- HONEY CROCK CABBAGE** 11c
- DANISH OR BOSCH PEARS** 2 Lbs. 33c

It's A&P for Dairy Products!

KEYKO MARGARINE 23c

SUNSHINE SWAMP CHEESE FOOD 48c

CHED-D-BIT CHEESE FOOD 70c

MILK-BIT AMERICAN CHEESE 34c

IGORIC GORGONZOLA CHEESE 49c

ARMOUR'S TREET 15-Oz. Can 32c

SCOTT'S TISSUE 3 Rolls 19c

COMB CENTER TOASTED WHEAT GERM 24c

BORDEN'S HOMO HOMO PANCAKE FLOUR 14c

BIRD HARBOR COLD LABEL MOLASSES 21c

FOR BISCUITS BISQUICK 30c

MINCE MEAT 70c

PILLSBURY MEAT-SHEEN FLOUR 2 1/2-lb. Box 25c

LANE'S BEE PICKLES 26c

VAN CAMP TENDERONI 9c

PHILADELPHIA CREAM CHEESE 10c

PARKAY OLEOMARGARINE 24c

LONG GRAIN RICE 2 Lbs. 26c

NECTAR TEA 15c

IONA COCOA 8c

NEW VELVET PEANUT BUTTER 31c

SHARON'S RAISINS 13c

CUT RIB WAX PAPER 33c

KITCHEN KLENER 6c

BOWL CLEANER 18c

WEAVER'S TAG SOAP 11c

SOAP 26c

OLD BUTCH OLEANSER 23c

WE'RE DOING OUR BEST TO SUPPLY YOU WITH SOAPS. SOAPS ARE DISPLAYED IN STORES WHEN RECEIVED.

A&P SUPER MARKETS

THE GREAT ATLANTIC & PACIFIC TEA CO.

SHRIMP 6-Oz. Can 49c

COMPLETELY DRESSED HERRING 18c

SMOKED SALMON 42c

SMOKED SALMON WHITEFISH 41c

GIVE FOOD

The Practical Gift for the Holidays

DECORATIVE AND NUTRITIOUS

FRUIT BASKETS

\$1.79 and up

Read The Eccentric Want Ads For Those Hard-to-Get Articles