

Honors Assembly At Baldwin High Is Held Tuesday

By ANNE HALADAY The semiannual honors assembly was presented at Baldwin auditorium Tuesday, January 11. First on the program was the senior class procession into the auditorium.

The a cappella choir, directed by Victor Ulrich, sang the Lord's Prayer. Don Benschoter opened the program. Ross A. Wagner, principal, announced the names of Mary Jane Tuttle, valedictorian, and Suzanne Burnside, salutatorian, of the January class.

Mrs. Robert F. Kohn presented the D. A. R. Good Citizenship to Jacqueline Buck.

Don Benschoter awarded silver charms to Ralph Coryell, Tom Zoellin, Tom Millebrandt, Bill Moody and Art Mascotte in recognition of their work this fall in staying out for cross country against great odds. The sponsor of these awards wished to remain anonymous.

Jack Poorman and Jack Sweney, of the January class of 1944, read citations received by Baldwin graduates in the armed services.

The National Honor Society inducted 12 new members: Jane Doidis, Gerry Flynn, Nan Gilbreath, Don McLeese, Jack Milne, Sally Meek, Denis Murray, Betty Lou Thurman, Jeanne Wilkins, Janet Zinser, Jeanne Blinn, and Grace Bowers. The new inductees were welcomed by Mr. Wagner. Music for the service was provided by Mary Jane Stephens.

Teachers assisting in the honors assembly were Miss Vidia McGiffen, 12A advisor; Miss Ruth Hill, speech; Miss Merle Taylor and Mrs. Adele Haladay, advisers of the Honor Society; Victor Ulrich and Arnold Berndt, director of the Baldwin band.

LEAGUE (Continued from Page 1)

son. Also a commissioner for the DSR. "Before moving to Birmingham four years ago, I was labor and management editor of Business Week, and a magazine writer and newspaperman for several years. Before that I was a manual laborer, and even earlier was a Kansas schoolboy."



Victor Reuther

Victor G. Reuther is assistant director of the UAW War Policy Division. In 1933 and for almost three years he and his brother, Walter, traveled through England, France, Germany, Russia, China and Japan working in plants and observing production methods and social and economic conditions.

He is a member of the district war manpower policy committee, a member of the policy committee of the labor production division of the WPB in Washington, also on the Mayor's Detroit transportation committee. Detroit Vocational training for war workers advisory committee, and is vice president of the Victory Council.

There will be no admission charge for the lecture.

(Want Ads Will Do It)

Rotarians Learn About New Truck

Birmingham Rotarians on Monday noon heard an interesting illustrated talk on General Motors' "duck" truck, which has been given a good account of itself on the various war fronts. Both the pictures and the information, it was explained, had been approved for release by the war department.

Gilbert Rodewig, of General Motors, Pontiac, presented the program, with Alan E. Davis, of Pontiac, handling the pictures.

The speaker explained that the "duck" is just one of General Motors' "6 by 6" army trucks, powered on all six wheels, with a heavy cargo box body, boat propeller and rudder.

Thousands of these "duck" trucks are in use on all war fronts. It was stated, taking heavy loads of army supplies direct from the ships in the various landing harbors, right up on the beaches, roads and streets and then on to the inland supply depots.

They crash through brush and undergrowth, though soft land and mud, without trouble or difficulty, except from enemy gunfire, and eliminate the need for unloading at the beaches.

A new kind of tire, deflated for road use, and inflated for use on hard roads and pavements, make these trucks more "duck" proof's success. Inflation and deflation are handled through power equipment operated and controlled from the instrument board of the truck and accomplished while the heavy cargo is in full operation on either land or sea.

At the close of his talk Mr. Rodewig answered a host of questions regarding GM's new addition to the nation's war equipment.

Maximum Fruit and Vegetable Prices Announced for Period Opening Jan. 13

DETROIT, Jan. 12.—The Detroit Office of Price Administration announced maximum prices on fresh fruits and vegetables to be effective January 13 through January 19, in Wayne, Oakland, Macomb, Monroe and Washtenaw counties.

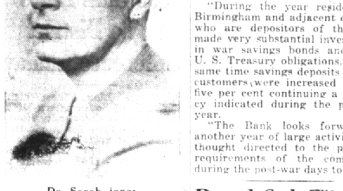
Table with 3 columns: Item, Class 1 & 2, Class 3 & 4. Items include Cabbages, Lettuce, Onions, Potatoes, etc.

Sales by producers or farmers to ultimate consumer shall not exceed the highest price listed for these items.

Begin Terms On State Ag. Board

Two new members of the State Board of Agriculture, Dr. Sarah Van Housen Jones of Rochester, and Winford G. Armstrong of Niles, will meet with the governing body of Michigan State College for the first time on Thursday, Jan. 20, when it convenes at the East Lansing campus.

"During the year residents of Birmingham and adjacent districts who are depositors of the bank made very substantial investments in war savings bonds and other U. S. Treasury obligations. At the same time, however, depositors' customers were increased twenty-five per cent continuing a tendency indicated during the previous year.



Dr. Sarah Jones

Each was elected last spring by Michigan voters to six-year terms starting Jan. 1. Miss Jones, a master farmer since 1923, manages a 400-acre dairy and poultry farm which has been owned by her family since 1823. She is widely known as a Upland-Frisian breeder, and the herd of over 200 purebreds she has developed has won numerous honors.

Winford G. Armstrong is a member of the State Grange 46 years. Mr. Armstrong has chosen State Master of Michigan's second largest farm organization about four years ago. He was born on the Berrien county farm started by his forebears over 100 years ago, attended high school in Berrien Springs and after a year at Michigan State taught school. He had been a rural mail carrier, but retired from the post two years ago because of the press of duties running his farm and serving as head of the Grange.

Holdover members of the State Board are Forest H. Akers, vice president of Chrysler Corp. and sales manager of the Dodge division, Detroit; Melville B. Peterson, Lowell farmer; William H. Berkey, Cassopolis editor, and Clark L. Brody, executive secretary and treasurer of the Farm Bureau, Lansing. Non-voting members include President John A. Heaham of M. S. C.; Dr. Eugene B. Elliott, state superintendent of public instruction; Karl H. McDonald, board secretary, and Charles O. Wilkins, college treasurer.

Carl Blumman, Maple guard, captured high scoring honors for the game with eight points besides playing a fine defensive game. The locals sent in completely different teams at short intervals in an attempt to check Royal Oak's scoring drive, but this had little effect upon the Oak reserves.

Royal Oak's starting five consisted of Graves and Shaw, forwards; Tuak, center; Hodges and Helming, guards. The Maples started Watts and Berges, forwards; Sanders, center; Blumman and Lee, guards.

LT. MAYNARD HOME

Lt. John D. Maynard, Jr., arrived home Tuesday for a short furlough visit with his parents, Mr. and Mrs. John D. Maynard, 941 Forest. He is enroute to Maxwell Field, Montgomery, Ala., for further pilot training with the Army Air Corps.

Salvage Committee Reports for 1943

The Birmingham Salvage committee has compiled its report for 1943 showing a total of 928,818 pounds of salvage gathered in the city during the year.

Table with 2 columns: Item, Quantity. Items include Waste paper, Rags, Clothing, Glass, Scrap metal, Rubber, Hosiery, Tin cans.

UNIVERSAL ELECTRIC MOTOR SERVICE PHONES 4406 - 600 1205 SO. WOODWARD

RESTAURANT OPERATION SCHEDULE SO YOU WILL FIND THEM OPEN WHEN YOU GO TO YOUR FAVORITE EATING PLACES

So that you will not be disappointed at finding your favorite eating place closed when you go there to eat, the Restaurants listed here are publishing their operating times. Knowing that you do not want to waste time, gasoline and tires, they are letting you know what days they are closed and what hours of other days they will be open to serve you.

THE NORMANDY LUNCHEONS • DINNERS S. W. Corner of Woodward and 10-Mile Rd. PLEASANT RIDGE Daily Hours, including Sunday Luncheons 11:30 A.M. to 2:30 P.M. DINNER 5:00 P.M. to 8:30 P.M. CLOSED ALL DAY ON TUESDAYS

BROOK'S COFFEE BAR Woodward ave. near 12 1/2 Mile Rd. WEEK DAYS—12 Noon to 7:30 P.M. 10 P.M. to Midnight SUNDAYS AND HOLIDAYS 7:30 P.M. to Midnight TUESDAYS—Closed All Day

VALDORA TEA ROOM 285 No. Woodward in 12 ROOM TUESDAY THROUGH SATURDAY 12 Noon to 2 P.M. and 5 P.M. to 8 P.M. SUNDAYS—12 Noon to 8 P.M. MONDAYS—Closed All Day

DIXIE DINER 255 E. Merrill WEEK DAYS 8 A.M. to 8 P.M. Including Saturdays CLOSED ALL DAY SUNDAY And Every Evening

'CORNING'S' El PATIO Woodward at Coolidge Highway "It's always Dinner time at Corning's" Beer and Wines served TUESDAYS - WEDNESDAYS THURSDAYS 4:00 P.M. to 1:00 A.M. FRIDAYS & SATURDAYS 4:00 P.M. to 4:00 A.M. SUNDAYS 1:00 P.M. to Midnight We do not open on MONDAYS We accept reservations for parties and banquets. PHONE Royal Oak 9772

DEVON GABLES TEA ROOM "A bit of old England in Bloomfield Hills" Telegraph and Long Lake Rd. Phone Birmingham 3500 OPEN DAILY—EXCEPT MONDAY

MIL-PEX COFFEE SHOP 138 S. Woodward in Birmingham OPEN 24 HOURS EVERY DAY EXCEPT MONDAY CLOSED ALL DAY MONDAY Open 6:00 A.M. Tuesdays

MINTS ICE CREAM CO. 1360 S. Woodward, Birmingham WEEK DAYS 11 A.M. to 8 P.M. Including Saturdays CLOSED ON SUNDAYS

DR. B. D. CAMPBELL Ophthalmologist Announces - - - That he has established a practice in the Birmingham Theatre Building Room 201 Phone 2344

STORM SASH COMBINATION DOORS PORCH ENCLOSURES CABINET WORK PHONE 2218 Grant & Ruffner

PECK'S Cash and Carry Suits, Topcoats, Plain Dresses \$1.09 CLEANED and PRESSED For Delivery Phone 2330 WOODWARD—NEAR MAPLE

SHAIN'S DRUG STORE W. MAPLE AT PIERCE ST. JANUARY SOAP SALE Hewitt BATH AND TOILET SOAP 6 BARS 60¢ 16 BARS \$1.00 KENSINGTON Magnams 3 Oversized Bath Bars \$1.00 WRISLEY Bath Bar 4 Bath Size Bars \$1.00 KENSINGTON Hand Soap 3 Oval Toilet Bars 50¢ WRISLEY Toilet Soap 4 Toilet Size Bars 50¢ FAMOUS "4711" Soaps \$1.00 for a Box of 4 Bars NEW STORE CLOSING HOURS 10:00 P.M. Except Saturdays 11:00 P.M.

Royal Oak Wins By 48-20 Score

By DON McLEESE Stopped by Royal Oak's superb passing and a crucial a t e shooting, Birmingham was smothered 48 to 20 by the Acorns Tuesday evening in the latter's court. It was the local team's straight setback of the season after four initial wins.

Marvin Mauldin, junior forward was the local big headache, scoring 20 points, Birmingham was needed in its last half and outplayed throughout the game, as evidenced by the halftime score of 19-5. The third quarter was slow moving with only 11 points scored, but the play reverted back to fast breaks in the final stanza.

Birmingham had difficulty in performing as a unit and couldn't get the ball out of the backcourt consistently. The locals lost control of the backboards in both the Hazel Park and Royal Oak games and have dropped both contests.

Alvin Larsen was high point man for Birmingham with 16 markers. The usually high-scoring trio of Harold Kelley, Don Little and Melvin Bommer was kept in check throughout the game.

The lineups were as follows: Royal Oak: Birmingham Brown, Bommer, Mauldin, Little, Dunkel, Krueger, MacDonald, Gordon, Zoellin, E. O. Sullivan, Hill, Barker, Baldwin, Monteen, and Watson.

Blam Suls—Berges, Sander, Larsen, Woodhouse, and Keller.

Pastors' Conference Is Set for Jan. 17

ANN ARBOR—Pastors of all denominations in Michigan will meet together, eat together and share their views at the fifth annual Michigan Pastors' Conference Jan. 17, 18, and 19 here. The conference, sponsored by the University of Michigan, will have for its theme: "Social Christianity."

Headlining the program will be Edwin L. Witte, head of the Detroit Labor Relations Board and chairman of economics at the University of Wisconsin; Dr. Harold Hart, professor of social ethics of Duke Divinity School at Durham, N. C.; Dr. Preston Slosson, professor of history at the University of Michigan and George Haynes of New York, executive secretary of the department of race relations, Federal Council of Churches.

Carl Blumman, Maple guard, captured high scoring honors for the game with eight points besides playing a fine defensive game. The locals sent in completely different teams at short intervals in an attempt to check Royal Oak's scoring drive, but this had little effect upon the Oak reserves.

Royal Oak's starting five consisted of Graves and Shaw, forwards; Tuak, center; Hodges and Helming, guards. The Maples started Watts and Berges, forwards; Sanders, center; Blumman and Lee, guards.

Royal Oak Wins By 48-20 Score

By DON McLEESE Stopped by Royal Oak's superb passing and a crucial a t e shooting, Birmingham was smothered 48 to 20 by the Acorns Tuesday evening in the latter's court. It was the local team's straight setback of the season after four initial wins.

Marvin Mauldin, junior forward was the local big headache, scoring 20 points, Birmingham was needed in its last half and outplayed throughout the game, as evidenced by the halftime score of 19-5. The third quarter was slow moving with only 11 points scored, but the play reverted back to fast breaks in the final stanza.

Birmingham had difficulty in performing as a unit and couldn't get the ball out of the backcourt consistently. The locals lost control of the backboards in both the Hazel Park and Royal Oak games and have dropped both contests.

Alvin Larsen was high point man for Birmingham with 16 markers. The usually high-scoring trio of Harold Kelley, Don Little and Melvin Bommer was kept in check throughout the game.

The lineups were as follows: Royal Oak: Birmingham Brown, Bommer, Mauldin, Little, Dunkel, Krueger, MacDonald, Gordon, Zoellin, E. O. Sullivan, Hill, Barker, Baldwin, Monteen, and Watson.

Blam Suls—Berges, Sander, Larsen, Woodhouse, and Keller.

Pastors' Conference Is Set for Jan. 17

ANN ARBOR—Pastors of all denominations in Michigan will meet together, eat together and share their views at the fifth annual Michigan Pastors' Conference Jan. 17, 18, and 19 here. The conference, sponsored by the University of Michigan, will have for its theme: "Social Christianity."

Headlining the program will be Edwin L. Witte, head of the Detroit Labor Relations Board and chairman of economics at the University of Wisconsin; Dr. Harold Hart, professor of social ethics of Duke Divinity School at Durham, N. C.; Dr. Preston Slosson, professor of history at the University of Michigan and George Haynes of New York, executive secretary of the department of race relations, Federal Council of Churches.

Carl Blumman, Maple guard, captured high scoring honors for the game with eight points besides playing a fine defensive game. The locals sent in completely different teams at short intervals in an attempt to check Royal Oak's scoring drive, but this had little effect upon the Oak reserves.

Royal Oak's starting five consisted of Graves and Shaw, forwards; Tuak, center; Hodges and Helming, guards. The Maples started Watts and Berges, forwards; Sanders, center; Blumman and Lee, guards.

MR. AND MRS. HARRY V. LANFAIR Wish to Thank their Customers and Friends For their Patronage of Mil-Pex Coffee Shop 144 S. WOODWARD While it was under their Proprietorship They also wish to offer CONGRATULATIONS AND GOOD LUCK to Richard A. Slack the New Proprietor