

PROJECTS

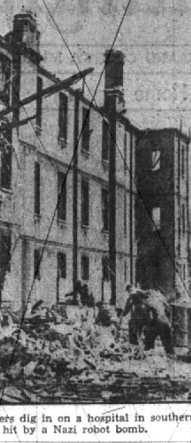
(Continued from Page One) changes of any consequence seem to be indicated within the city. The collaboration of services shall include advice on the work being prepared by the city engineer.

The compensation for services shall be on a fee basis. The first payment shall be one thousand dollars (\$1,000.00) for consultation services within a six months period and the remuneration shall continue on that basis during the progress of the development of plans for a period of not less than three years.

OPEN ROAD

(Continued from Page One) fresh air of the open spaces, where the cumulus clouds wing their fairy ways overhead, is wanted to be out and even enjoy the exhilaration of being in a thunder shower without an umbrella to protect me; and many other yearnings sent me forth on my bike. As George, there's nothing like the feel of a couple bike pedals under your feet, to know that it is your own personal energy that is pushing you over the road; you don't have to buy a railroad or airplane tickets in these days for an automobile—and, besides, I didn't want to walk the whole distance, either.

Setting Sail "So, starting out with a wire basket on the handlebars filled with necessary equipment, my bed-roll and flint-locks straddled the rear wheel, I headed toward Port Huron. I went on the incomparable Mr. Skinner. "It was nice going up there, part of the time along the Michigan St. Clair River, too. Reaching Port Huron, I observed a high bridge, extending in what I thought was a seaward direction, over the river; recalling Horace Greely's famous admonition, "I figured on following the ancient scribe's advice, so paid a party of foreigner. The sign I found out later that it was 'The Blue Water Bridge'.



Service men and rescue workers dig in on a hospital in southern England after it was hit by a Nazi rocket bomb.

Local Delegates Say Legion Meet. Was One Of Best

Birmingham's delegates to the American Legion state convention in Grand Rapids the past week end report a lively and enjoyable convention; many busy meetings with former buddies of World War I; a careful study by the Legionists of plans for future Legion activities, future needs of the nation as a whole and plans worked out for aiding the rehabilitation of returning service men of World War II.

Red Cross Aids Men On Furlough

Service men on furlough in Oakland County will find the Oakland County Chapter American Red Cross ready at all times in facilities requests for emergency assistance of leave time according to Mrs. E. F. Turner, home service chairman.

Advertisement for 'Every Day It Flies Day' featuring 'FLAGS' and 'NATIONAL TENT & AWNING CO.' with prices and product details.



Now here's a grand Gahardine two-piece that's suitable from morg' till night. Sleeves, breast-pocket and front opening of this form fitted jacket are trimmed right up to your chin in contrasting braid. The skirt is different and really spells "oomph", with five pleats in front and a kick pleat in back. This Bobbie Brooks original comes in your favorite, flattering colors.

RB SHOPS

Members of the commission visiting Oakland county include Harry H. Whitley of Dowagiac, chairman; Russell Bruce Jackson; Robert Rayburn, Alpena; Joseph P. Randle, Newberry and Dr. Alexander Blaine, Detroit. In addition, P. J. Hoffmaster, director of conservation, and 10 members of his staff were present.

Advertisement for 'WAR BONDS' with the slogan 'MEAN MORE THAN A GOOD INVESTMENT' and a small illustration of a soldier.

Advertisement for 'NOTICE! Good Results' for 'ARTHRI-TIC PAINS, Call or write for free information' from 'HINSON INSTITUTE'.

By this time I had pedaled quite a few miles, and the muscles in my legs were operating automatically. That day I put a hot 100-mile run in my muscles and headed toward London—only in Canada, not in England, although I was riding in the same direction that once beckoned legendary Dick Whittington to the English city, and this revived my strength. That night I bathed, and slept; but when I awakened the next morning my feet were extended toward the ceiling, moving in the fashion of pedaling a bicycle. Truly, I was getting plenty of exercise.

By this time I had pedaled quite a few miles, and the muscles in my legs were operating automatically. That day I put a hot 100-mile run in my muscles and headed toward London—only in Canada, not in England, although I was riding in the same direction that once beckoned legendary Dick Whittington to the English city, and this revived my strength.

What Your City Commission Is Doing . . . August 14, 1944. Bills approved totaling \$7,852.28. Permission given to Calvary Baptist Church to conduct tent services from August 20th to 27th inclusive.

What Your City Commission Is Doing . . . August 14, 1944. Bills approved totaling \$7,852.28. Permission given to Calvary Baptist Church to conduct tent services from August 20th to 27th inclusive.

TENNIS

(Continued from Page One) Paula LaTourrette took that match with a score of 6-1, 6-3, 4-6, and so to the finals on Sunday. Patty Price defeated Gerald Crane with a score of 6-8, 6-3, 7-5 in the other semi-final.

Women's Finals between Patty Price and Jane Hite, terminating in a score of 6-1, 6-4 in Patty's favor, made Patty the winner of the Women's Division as well as runner-up in the Girls' Division.

Women's Finals between Patty Price and Jane Hite, terminating in a score of 6-1, 6-4 in Patty's favor, made Patty the winner of the Women's Division as well as runner-up in the Girls' Division.

Lions Plan Family Picnic For, Aug. 31

The Birmingham Lions club is planning a family picnic to be held at Springdale park on the late afternoon of Thursday, Aug. 31. The fun will start at 5 o'clock with the big feast served between 6 and 7, and with games and frolic planned for old and young.

THE BIRMINGHAM DRUG STORE

Is Closed for Vacations It Will Be Reopened On TUESDAY, AUGUST 22

Why your gasoline dealer's Ethyl pump may be dry

It has become necessary to limit the supply of premium gasoline to civilians—in spite of the fact that the production of Ethyl fluid has been increased tremendously since the war began. We would like the millions of Ethyl users to understand why this wartime shortage exists, and why it is, in fact, good news.

Why your gasoline dealer's Ethyl pump may be dry

When you drive up to an Ethyl pump these days the dealer may tell you he has no Ethyl, or that he can let you have only a little.

When you drive up to an Ethyl pump these days the dealer may tell you he has no Ethyl, or that he can let you have only a little.

Large advertisement for 'PEABODY BROTHERS FRUIT DEPOT' featuring 'Apples \$1.00', 'Potatoes \$2.80 Bushel', and 'Peaches \$2.50' with other produce prices.

Large advertisement for 'SHAIN'S DRUG STORE' featuring 'Donate At The Red Cross Blood Bank' and 'A Plastic Utility Kit'.

Why your gasoline dealer's Ethyl pump may be dry. It has become necessary to limit the supply of premium gasoline to civilians—in spite of the fact that the production of Ethyl fluid has been increased tremendously since the war began.

Advertisement for 'Ethyl' gasoline featuring a 'NONE TODAY' sign and text explaining the wartime shortage of premium gasoline.