

TESTS

(Continued from Page 1)
 Cheeton Vocational Inventory. This is given for two reasons: to start the student thinking about his vocation, and to help the scheduling system by learning the right classes for the student to enter.

In the eleventh grade the Lee Clark Fundamentals of Arithmetic scores on this are required to take a remedial course in arithmetic for are given. Students receiving low college entrance. The Minnesota Mechanical Aptitude test is also offered in the eleventh grade, to show the extent of the student's ability.

Four Tests for Seniors
 Four tests are given in the twelfth grade. They are the Otis Mental Ability test, the N. I. I. P. Clerical test, the Kuder Vocational Interest Inventory, and the Mich-

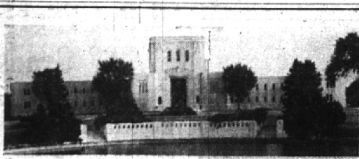
igan Special Application of Mathematics test. When all these tests are completed, the guidance department has a battery which gives a picture of each student's abilities, interests, and background.

"Every senior," says Mr. Chapman, "should take advantage of this opportunity for analysis of test results because experience shows that it can help many people find their right places in the world."

Something to Ponder

The shipwrecked party had spent many long months on the desert island. Then at last a large liner anchored in the bay and a smart boat put off for the shore.

As the boat drew near, the officer in charge threw a bundle of newspapers ashore.
 "The captain sent this bundle of newspapers," he shouted. "After you've read them he wants to know whether you want to be rescued."



THE TEMPLE OF MEMORIES MAUSOLEUM, FOR ABOVE GROUND ENTOMBMENT, IS LOCATED IN AMERICA'S FINEST GARDEN PLAN CEMETERY ON EAST LONG LAKE ROAD AT CROOKS. PRICES ARE MODERATE.

White Chapel Memorial Cemetery
 355 S. Woodward
 Birmingham Phone B'ham 4400

Please mail me your new booklet about White Chapel Memorial Cemetery and the Temple of Memories Mausoleum.

Name _____

Address _____

The Adult Choir of Christ Church Cranbrook will present the Advent and Christmas portions of Handel's great oratorio "The Messiah," at the Sunday vesper service Dec. 12, at 4 p. m. The choir of 48 voices will be under the direction of Dr. W. Lloyd Kemp; Arnold Bourziel will play the organ.

Soloists on this occasion will be

Christ Church Choir Presents "The Messiah" Sunday



Lois Chapman, soprano; Marion Jewell, contralto; Orville Griffiths, tenor; and Hugh Davies, baritone.

"The Messiah" Handel's most successful and best-known oratorio, was composed in the year 1741 in twenty-four days, from Aug. 22 to Sept. 14. It was first performed at a concert given for charitable purposes at Dublin, Ireland, on April 13, 1742. Handel

conducted the performance in person. According to the historical evidence, Handel knew that the Dublin oratorio and choral resources were by no means on a par with those of London, and was markedly influenced by this circumstance in the composition of his work. In his choruses he did not go beyond four-part writing; and kept his orchestra within the most modest limits.

Thereafter Handel, beginning with March 23, 1743, brought out "The Messiah" every year in London with great applause; in the course of time he made various alterations in certain numbers, but left the work as a whole unchanged, both vocally and instrumentally, from its original form; thus bearing witness that, despite its limitations, this primitive conception of the work was likewise the enduring one.

This concert will be introduced by the "Overture" to "The Messiah," followed by prayers and a special arrangement of the "Nunc Dimittis" from the Russian liturgy with Dean Yeoman, basso, on the solo lines. A brief carillon recital will be given by Nellie Beveridge at 3:30 p. m.

1200 Children Met Santa at Merchants' 4th Annual Christmas Theater Party

Nearly 1,200 children thronged the Birmingham Theatre last Saturday morning for the fourth and finest of the Annual Christmas parties given by the Birmingham Retail Merchants' Association. Some came clinging fast to the hands of mothers or dads; others trailed through the turnstiles in neighborhood groups of three or ten.

All were in fine spirits, eager to get an early glimpse of Santa Claus, and witness the program arranged by Howard Holah, manager of the Birmingham Theatre, made possible by the Merchants' Association. Mr. Holah is a master at handling crowds of children and as usual the little folks behaved well and enjoyed themselves immensely.

Their enthusiastic applause and laughter drew comment from the performers, and is the best testimony that the children really appreciated the efforts of Mr. Holah and his committee, which was composed of Edward Kurth, Walter Fausner and Foster Toothacher.

The show, lasting nearly two hours, started with a recorded rendition of the national anthem which was followed by two specially selected cartoon films. The rest of the program was made up of four top-notch vaudeville acts and a stage introduction of Santa Claus, who later met the children in the lobby. There all had an opportunity to shake hands with the bewhiskered gent from the North Pole and make their annual appeal for remembrance on Christmas eve.

Tickets for the party were distributed under the direction of Walter Raychell, secretary of the B.M.A. in all of Birmingham's grade schools. Tickets were given to children up to and including ten.

Illness Hits Post Office; Army Trucks For Holiday Mail

With six carriers ill Wednesday, Postmaster Joseph F. Byrne explained that there might be only one delivery a day on some routes. He again thanked the public for cooperating in the "Mail Early for Christmas" drive and said that with the promised help of five army trucks from the Detroit Post Office to arrive here Dec. 13, he hoped to meet the holiday mail delivery problem. High school boys will be used as jumpers on the trucks, manned by soldiers.

The public is asked to save all types of waste paper. The paper should be kept dry. It can be sold to a junk dealer or donated to a charitable organization or it may be collected by a local salvage committee.



Gifted PAJAMAS

By GLOVER and MANHATTAN



Gifted with smart styling, excellent tailoring and handsome, heavy quality satens, broad-shouldered pajamas, this pajama selection will help you complete your Christmas shopping today.

\$2.25 Up

Mulholland's MEN'S AND BOYS' DEPARTMENTS



A Gift List of Suitably Practical Items to Help You Make Those Important Choices

Service Girl Gift

REVLON NAIL POLISH KIT Most requested gift by women in the Service from \$1.50 up

Special Gift for That Man In the Service

FOUR PURPOSE UTILITY KIT A light, compact, plastic, all-purpose kit \$9.00

Billfolds

In many fine leathers, with interesting practical designs up to \$10.00

Tobacco Pouches

An essential for every pipe smoking man on your list. . . . Wide range from \$1.00 up

Hobnail Cologne by Wrisley

New pastels in this popular item. . . . Choose from—Apple Blossom, Honeyuckle, Gardenia, White or Flower \$1.00

Early American Old Spice Tissue Box

Contains 3 cakes of Toilet Soap and fragrant Talcum powder \$1.50

Writing Papers

A new assortment of fine writing papers by Eaton and Rome Creations from 50c up

Eau de Toilette de Raymond

Pink - Devilly - Minxy - each fetchingly packaged in personal carton \$1.25

EXCISE TAX ADDED WHEN APPLICABLE

SHAIN'S
 DRUG STORE
 W. MAPLE AT PIERCE ST.
 MEMBER RETAIL MERCHANTS ASSOCIATION

This wartime message

from your Insurance Agent

can help you

As your agent or broker, I wish I could get around to see you the way I used to—to help determine your risks and tell you about new and better coverages. But—what with gas rationing and shortage of help—it just isn't in the cards.

Of course I still get around as much as I can. And recently I've found so many people with problems needing attention, that I think a message of warning to you is in order.

Protection costs LESS today! You are the one most vitally interested in being properly insured. The premium you pay the company and the commission I get are trifles compared with the large loss to which you may be exposed at this very minute!

Perhaps you don't know there is a broad new policy that covers damage suit hazards in and around the home

—covers your dog, personal acts and other things for which you may be legally liable, all for only \$10.



Have you heard of the new theft policy that covers property belonging to you, your family, your guests, your servants? It's much broader, much lower in cost than former policies.

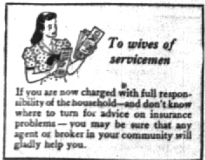
Many people don't realize that because of rationing, automobile insurance rates have been slashed so much that "can't afford it" just isn't an argument in these times.

And with property values changing rapidly, fire insurance policies should be thoroughly reviewed in many cases.

Let's talk things over

These are just a few of the things you and I should discuss. When I say "I," I'm speaking for any agent or broker in whom you have confidence.

Let's look at it on the basis that I want to help you get the protection you need—not that I just want to sell you something. Since I can't be everywhere at once, won't you look me up? Phone me or drop in to see me so I can help you protect yourself in these difficult times.



Your Insurance Agent

GEORGE C. BOOTH

For further information call me at my office or home

OFFICE: CHERRY 5240

Residence: Birmingham 1798

Cranbrook Rd., Bloomfield Hills

General Underwriters, Inc.

700 Buhl Bldg.
 Detroit, 26, Michigan

Cherry 5240

We are on your side. We are on the offensive. Back the attack by buying War Bonds.