

Within every human being there are potentialities of good. We who criticize on superficial knowledge are in reality offending the Maker of mankind.

SIXTY-THIRD YEAR—NO. 49

BIRMINGHAM, OAKLAND COUNTY, MICHIGAN, THURSDAY, MARCH 6, 1941

\$1.50 PER YEAR (In Oakland County)—SINGLE COPIES, 5c

Built With Pride To Be Proudly Owned

You'll appreciate the comfort of this new home—the beauty of its warm red brick and sparkling white clapboard exterior.

Here is your opportunity to avoid the inconvenience of planning, and arranging the layout of a new home. This one is built—well built—ready for you to move in. The Colonial architecture uses all available space for utility. The four bedrooms, served with two tiled baths, are bright and cheerful.

Surrounded with new buildings, in a rigidly restricted area only 3 blocks from Quanton School, this home is a well protected investment. It sparkles both inside and out. Air conditioned oil heat provides cleanliness and controlled comfort.

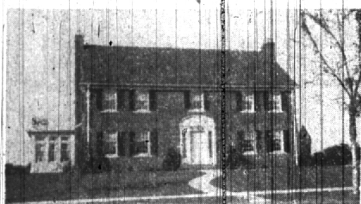
You are invited to inspect this delightful Colonial home at your convenience. Just

Call

MAX BROOK INC.
REALTORS
ESTABLISHED 1898

ELMHURST 6330 BIRMINGHAM 1212

FOR SALE



351 LAKE PARK DRIVE

DOUBLE INSULATED with Insulate and Balsam Wool. Utmost in comfort economically. Triple Duty boiler provides quick vapor steam heat through concealed radiators; constant supply of circulating hot water; garbage incinerator. All in one efficient unit.

TYPICAL OF EXTRA QUALITY THROUGHOUT
FOR APPOINTMENT RA4330

A REAL HOME—DOUBLE LOT

Beautiful trees; yard and garden
New air conditioned heating and oil burner
6 rooms, tile bath, screen porch
Excellent kitchen with GE dish washer
Owner transferred—offers quick sale for \$8,500

Phone 1250 for Details

Walsh, James & Wasey Co.
DETROIT, BIRMINGHAM, BLOOMFIELD HILLS, LANSING, ROCHESTER, ANN ARBOR, Kalamazoo, East Lansing, Farmington Hills

WANT ADS COST LITTLE AND GET QUICK RESULTS



They depend on YOU.

to provide them with an education, etc. You can do it safely and easily thru a systematic savings program.

3% CURRENT RATE

• Each Account Insured Up to \$5,000.
• \$1.00 Opens An Account.

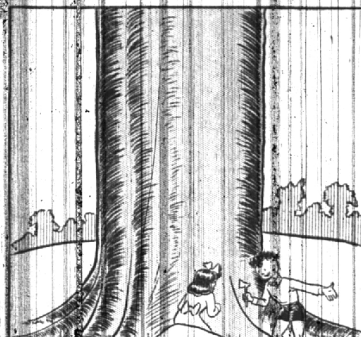
BIRMINGHAM FEDERAL SAVINGS & LOAN ASS'N

243 East Maple Ave.

Cartoon Fun - - - News Sidelights in Pictures



"I GUESS THE KID WILL NEVER AMOUNT TO ANYTHING—WHEN I WAS HIS AGE I WAS SWALLOWING SAFETY PINS EVERY DAY!"



"YOU BETTER GO SIT OVER THERE, MARY JANE—I DON'T KNOW WHICH WAY THIS TREE IS GOING TO FALL YET."

Deanna Makes Friends With a Farmyard Youngster



All decked out in buckskin and other appropriate western garb, screen songstress Deanna Durbin, visits a dude ranch in California, where she finds her attentions are appreciatively received by one of the local calves.

Walloping Wallace in Work-Out



Don't trifle with Vice President Henry A. Wallace. He's learning the hard way the art of self-defense. Senator Allen Ellender, of Louisiana, was his sparring partner in a recent work-out at the Senate gym.

Car Leaving Curb Hit By Another

Minor damages resulted last Thursday afternoon in a crash on West Maple near the Hills Acres dairy. Mrs. Anna La Hett, 47, 1265 Easton road, was driving away from the curb when her car was struck by one driven by Kenneth Maharg, 18218 Leyden street, Detroit, according to the police report.

Quentin Reynolds Next On Cass Town Hall

Quentin Reynolds, Collier's associate editor and foreign correspondent at the East Theatre, Town Hall speaker Friday morning, March 7, at 11:30 o'clock, giving "The Battle of Britain" through the eyes of an American as an impartial and interesting observer. Try an Eccentric Classified Ad for quick results.

Let Us Design A Plan To Fit Your Home

CONSULT A LANDSCAPE ARCHITECT

- Plans and Specifications
- Landscape Construction
- Supervision
- Maintenance Service

EXPERT, PRACTICAL, SERVICE

LESLIE SMITH Landscape Architect
152 Lincoln at 3rd Phone 499

Did you know that you may have a lot in BLOOMFIELD VILLAGE

85 feet wide with several large trees and nearly 200 feet deep for \$1,675. This lot is within easy walking distance for a small child to the Bloomfield Village School. Other lots in this same subdivision and general location available at reasonable prices. Larger building sites in both Quanton and Bloomfield Village school districts may also be had for immediate building use.

Call us for appointment.

Judson Bradway Co.

REALTORS

BIRMINGHAM OFFICE
259 So. Woodward
Phone 38 or Elm. 67-7

DETROIT OFFICE
24 Floor M. State Bldg.
Phone RA. 9100

NOW is the Time

for you to make a wise decision: Own your own home! More and more people are buying homes for permanent protection. It's the sensible and practical thing to do!

2466 Dorchester

ADAMS SCHOOL
With rapid transit close by this property will appeal to the professional man. 1930 field-stone and brick veneer construction yet thoroughly modern, low automatic heating cost. The basement is absolutely dry, the recreation room with fireplace is just right for a playroom. A large landscaped site, fenced, completes the picture. \$8,000—terms.

465 Kimberley

QUANTON SCHOOL
So many people liked the house "At the end of the Road" that we had immediately that we simply had to find another "boy" in this desirable district. This one is an interesting picture. Three years old with a 2-car attached garage and the 4th bedroom and 2nd bath rounded in. Completely modern and landscaped—you should see it while it is still available. \$19,500.

Bloomfield Hills

For the larger family who appreciates modernistic architectural theories this property so distinctively different deserves your attention.

The studio living room has an 18-foot ceiling. A powder room, sunroom, card room, carry out the modernistic motif. You will like the ballrooms, 4-car garage and fine servant accommodations. On 3 1/2 acres with low taxes, very low heating cost, this offering includes new carpeting, new stove and 20 cubic foot refrigerator. It is impossible to underestimate the value reflected in the low price of \$27,500.

The owners and our representatives will be glad to arrange a time to visit your convenience so that you may see at first hand any of these properties.

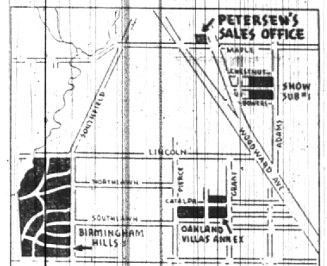
HOME SECURITY COMES HOME OWNERSHIP

SNYDER BUCK & BENNETT

THEATRE BUILDING BIRMINGHAM 1400

Petersen
Has the Model
and the
LOCATION
To Please You
And to Fit
YOUR Income!

The Map Shows Present Petersen Developments in Birmingham



BUDGET HOME

Shown at Left Being Erected on HAZEL ST. between ADAMS and HUNTER BOULEVARD

\$34.40 Per Month, including taxes, buys this home

With many sales booked on preview showing, this adaptation of Petersen's 1941 Budget Home is extremely popular. \$34.40 per month, including taxes, pays for this home.

WE WILL ALSO BUILD According to Your Plans or Your Lot



Situated on a knoll in Birmingham Hills with beautiful vistas from three elevations, this pleasing home nearing completion for Mr. and Mrs. John W. Addley, was built according to the owner's plans. Illustrates what can be accomplished on the large homesites now open and approved here for Petersen operations.

See Petersen Designed and Built Homes on Hazel and Chestnut Streets, between Adams and Hunter Blvd.

Whether you plan a \$4,000 or a \$40,000 home—see our models for "Dollar Value" Comparison—Let us build you a home to fit your income!



Arvid C. Petersen
"BUILDERS OF QUALITY HOMES FOR OVER 20 YEARS"

ARTHUR J. TUGGEY HOWARD E.

BIRMINGHAM REPRESENTATIVES

Phone 916

Birmingham, Mich.

411-E. Maple Ave.