

THIS AND THAT

(Continued from Page One)

stripped of our fairy tale appraisal of life. As perhaps did you, I was finding out that the gifts Santa bore in his pack had to be paid for in human sweat and toil. In short, I hardly knew much about anything at that age—and Christmas took on less of spiritual import. I began to see its commercial aspect, and learned that some folks had more than they needed, whereas many had not enough for even bare necessities.

But the tinsel and trappings of Christmas still held us bound, and I was still quite happy in prepara-

tion for it and enjoyment in it. And the years kept coming and going, too.

I married and began the rearing of a family, now grown to young manhood and womanhood. In their lives, in many ways—even as you who read this—I relived my own all-too-speeding span of years.

I tried to give them some of the possessions that I never had—even as you have done. Preparing for their Christmases gave me joy and happiness, of course; they showed their gratitude as children do, which is all that parents ought to expect from children.

And soon these children, working out the destiny of their own cycle of life, will marry and we hope, have children; and we'll have

our own childhood brought back when these grandchildren play upon their own living room floor; and I'll probably be called "Grandpa" or something that sounds old and ancient, and no doubt like it.

So this third era in my Christmas feelings is, perhaps, the best of all three; for it contains less of the physical side of the Nativity Day and more of the spiritual significance that overwhelms me from the side of the real meaning of Christmas—a meaning so beautiful and lovely that only a sort of inner hunger and yearning can whisper, in language as yet unspoken by human lips, the profound meaning of the greatest ten words ever spoken or penned: Love thy neighbor as thyself. Bless them that curse you.

Merry Christmas, Folks! Aye! the very merriest ye have ever had!

Home Decoration Contest

I would like my home considered in the Merchants' Home Decoration Contest for which \$100 in prizes have been offered.

NAME _____
ADDRESS _____

Judges will inspect homes from Dec. 24 to Dec. 28. Bring or mail this blank to The Eccentric by 5 p. m., Tuesday, December 23. Entries may also be phoned.

A Merry Christmas

Time-worn words, but the most appropriate of them all. When we say "Merry Christmas" you can be sure that it is expressed with genuine appreciation of its true meaning.

OLSEN'S MARKET

120 South Woodward

SERVICES

(Continued from Page One)
choir will include "What Mean Those Holy Voices" by Carrie B. Adams; "There's a Little Christmas" by Ira B. Wilson; and "Glory to God in the Highest," arranged from Gounod by R. M. Stults. The pastor's Christmas message will be based on the theme, "Glimpses of the Christ-Child."

Christ Church Cranbrook Christmas service at Christ Church Cranbrook will be inaugurated with the festive celebration of the traditional midnight service on Christmas Eve starting at 11 p. m.
A recital of Christmas music on the carillon will be played by August Mackelberghe starting at 10:15 p. m. The special music for this service will include "Technique of the Angel's Song" and "Gretchen's Song" by the Mierne Creed. A selection of several carols will be sung at the offertory among which are: "O Nata Lux" by Tallis; "The Holly and the Ivy" arranged by Boughton in addition to The Shepherds and the Inn" arranged by the choir. Other carols include: "Prætorius' 'A lovely Rose is Blooming' and 'Hail' in the Elm Mid-Winter." The choir is under the direction of E. W. Hill, organist and choir-master. The service will be a festive celebration of Holy Communion with the rector, the Rev. Charles H. Cadigan, celebrant.
On Christmas Day the only service will be a celebration on Holy Communion at 10 a. m.

TOY SHOP

(Continued from Page One)
"The little bin has wheels on it," Holmes explained. "Children don't like to put their toys away in a box or closet where they can't be seen, but like to have them close by. The bin can be used as a little cart, and then when play is over, it is a convenient receptacle for other toys, and can be shoved under the bed. You don't teach children principles so much as you do habits; make it convenient for children to pick up their toys and they're more likely to do it."
Holmes also makes a "step up stool" which children like for a low seat and which can't be tipped. "We couldn't turn them out fast enough so we stopped making them Nov. 10," Holmes declared. "However, we'll push it as an Easter item."

The Brookside Easel Another device with a local background is the Brookside Easel, developed with the cooperation of Brookside School. It features the use of little wooden pegs to fasten up paper instead of thumb tacks, for small children are not adept at using tacks on a hard surface, he explained.

A toy clothes horse which has become a popular item in Eastern college girls' sororities and dormitories was another interesting revelation. The girls find it the

New Facts on Winter Driving

Can You Answer These Quiz Questions?

1. Does it help to reduce air pressure in tires when traveling over icy surfaces?
2. When is an icy pavement most dangerous; when the air temperature is 2 degrees above freezing or when it is 2 degrees below freezing?
3. Are tires with good treads much better than smooth tires on icy roads?

on icy roads? On wet roads?

4. How do highway departments prevent sand or cinders, used in skidproofing, from blowing off the road or being brushed off by traffic?
5. Can a vehicle with tire chains negotiate icy curves at higher speeds than a vehicle without chains?
6. In what manner should brakes be applied when stopping on an icy surface?

Michigan, the National Safety Council and a group of co-operating agencies conducted an extensive investigation of winter driving. The correct answers to the foregoing questions are found among the interesting and valuable data developed. Substantial reductions in the heavy winter traffic can be made if every motorist who quizzes himself on these questions will also read and remember the answers given below.



Left: 3,000 individual tests were made during the investigation of winter driving hazards, some of them being conducted at night. Right: Treated abrasives were spread on the frozen lake surface and demonstrations made of their effectiveness in skidproofing. Photo courtesy National Safety Council

Answers to Highway Safety Quiz

1. The common practices of lowering tire pressure and increasing the load over rear wheels to increase traction on slippery surfaces are not recommended. The resulting increase in traction for stopping is slight, and this is more than offset by reduction of safe speed on curves.
2. Strange though it may seem, icy surfaces are more treacherous at 2 degrees above freezing than they are at 2 degrees below freezing. At temperatures up to 2 degrees below freezing, ice goes up and the stopping distance on ice at 15 degrees is

actually 37% less than at 34 degrees.

3. On icy roads, condition of tires does not have much bearing on skidding. In the case of wet roads, however, cars with good treads are definitely better.
4. Practically all highway departments now treat skidproofing abrasives with calcium chloride. This material forms a thin coating around the sand or cinder particles which causes them to melt into the ice and anchor securely. Since calcium chloride is an anti-freeze, it also prevents storage piles of abrasives from freezing and makes spreading on icy roads easy even at sub-zero temperatures.
5. While the use of chains is

beneficial in stopping or accelerating on straight sections of icy highways, they do not provide control against rear-end skidding on curves. Chains should be regarded as providing an extra margin of safety at moderately slow speeds, but a margin that disappears if speeds are too fast.

6. In stopping on slippery roads, let the braking power of the engine in high gear slow the vehicle down to about 10-12 miles per hour, using the brakes lightly, if necessary; then disengage the clutch and apply brakes cautiously for the final stop. "Pumping" the brakes lightly off and on is much better than locking the brakes for maintaining control of direction.

7. Small children should not be given toys with electrical heating elements in them to play with or toys which require an open flame, such as alcohol lamps, etc. Only older children and grown ups who are aware of dangers should operate such toys.

Never give small children toys made of celluloid such as rattles, miniature furniture etc. to play with around Christmas tree decorations or open fire.

In wrapping and unwrapping gifts be sure that excessive wrapping, tinsel, confetti, excelsior, etc., are stored in a container or box away from an open fire, out of reach of small children and where cigar, and cigarette butts will not be dropped into them.

Never overcrowd a small corner place of gathering.

Dispose of Christmas trees and decorations when the needles begin to dry out.

If during Christmas or New Year's rubber balloons are to be used for interior decorations use compressed air or helium only for inflating. Never use hydrogen or other lighter than air gases. Permit to be warm at Christmas and stores not the homes, churches and stores.

Be cautious of overheated furnaces, stoves and smoke pipes.

If the Doctor has to be called let it be for the boy or girl who has eaten too much and not for the child suffering from burns.

War and Traffic More Americans died in traffic in the past year and a half than were killed in the World War—United States Municipal News.

Obituary

JAMES RENWICK MCKINNEY

Funeral is to be held Tuesday afternoon at 2 o'clock at the Bell Funeral Home for James Renwick McKinney with burial in Grand Lawn Cemetery in Detroit. The Rev. J. C. Matthews will be the minister.

Mr. McKinney, the husband of the late Mrs. Jeanette Young McKinney who died in April, 1939, came here 37 years ago from Southfield Township to get into the lumber business. He retired in 1920 and lived in Birmingham on Wallace street until two months ago when he went to live with his daughter, Mrs. Emerson Boardlee, 17754 Northrup avenue, Detroit.

He was a member of the First

Southfield Reformed Presbyterian Church.
Besides Mrs. Boardlee he leaves two grandchildren and the following brothers and sisters: Edward McKinney, of Orlando, Fla.; Mrs. Elizabeth Gray, of Boston; Mrs. Jessie Lawson, of Royal Oak; Mrs. Ida Paff, of Morristown, Conn.; Mrs. Vera Patterson, of Baldwin, Ill.
The body will be at the Boardlee home until Tuesday when it will be brought out to the Bell Home for funeral service and burial.

Try an Eccentric Classified Ad for quick results.

Administrator's Sale!

53-ACRE FARM—4 1/2 MILES FROM BIRMINGHAM
Allen F. McGee, Administrator
28348 Evergreen Rd., or write
108 So. Woodward, Bham

ORDER NOW!

Complete Your Christmas Dinner with Sealtest Ice Cream

in INDIVIDUAL CHRISTMAS MOULDS

No Charge for Packing and Delivery Service

Choose From This Wide Variety

Holiday Specialties—fancy cakes, melon molds, fancy center brics, individual molds. Santa Claus... Poinsettia... Stocking... Christmas Bell... Turkey... Candlestick... Fruits... Flowers, Christmas Bell Brics... Vanilla Ice Cream with Strawberry Bell Center, Surprise Pudding with Black Raspberry sherbet center... Christmas Tree Brics—Vanilla Ice Cream with Pistachio Tree Center.

HEADQUARTERS FOR Whitman's and Mrs. Stover's Candies

SHAIN'S DRUG STORE

PHONE 66 OR 61

WE DELIVER



HUSTON HARDWARE CO.

"Over 30 Years of Service"

HOWARD J. BELL

• FLORIST •

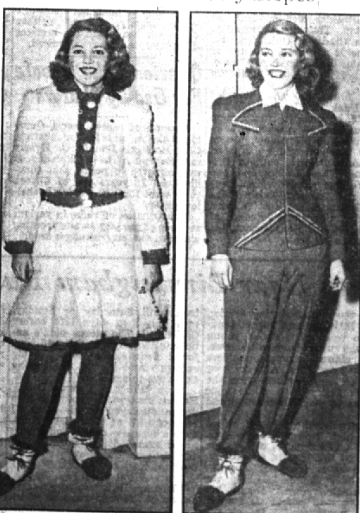
Member F. T. D. Flowers Sent by Wire

928 S. Woodward

Phone 882

Storm Sash-Cabinet Work Combination Doors Porch Enclosures, Etc. SMITH WOODCRAFT CO. Grant at Ruffner Phone 2218

For Wear on Snowy Slopes



Perfect for play in the wintry out-of-doors are these ski and snow outfits. Woolly skirt and jacket combination, left, is worn with heavy stockings to protect the legs. Snug for skiing are the red wool jacket and dark gingham ski pants, at right, trimmed for contrast with green and yellow embroidery.

A Joyous Noel

To each and all of our many friends we wish to say, "Season's Greetings".... We gratefully acknowledge the many courtesies shown us and the many evidences of good will that have made our associations with you so enjoyable.

May you have a Season of great joy and a New Year of Happiness and Health.



Happy New Year

CHRISTMAS GREETINGS

Please accept our cordial wish for abundant prosperity and contentment to each of you. And may we say, "Thanks to all the good friends of this organization for enabling us to continue to be of service to you."

THE BIRMINGHAM FRUIT CO.

Closed All Day Christmas Day

SELLS ELECTRICAL COMPANY

288 WEST MAPLE AVE.