

As a general rule, children are powerful "salesmen," they know so well how "to work" their parents. Parents are wise to remember this, and not "buy" everything asked for.

SIXTY-THIRD YEAR—NO. 21

BIRMINGHAM, OAKLAND COUNTY, MICHIGAN, THURSDAY, AUGUST 22, 1940

\$1.50 PER YEAR (In Oakland County)—SINGLE COPIES, 5c

ARVID C. PETERSEN

Offers For Sale

BIRMINGHAM HILLS

NOW F. H. A. APPROVED

A Fine Restricted Subdivision of Single Home Sites In the City of Birmingham.

On the Banks of the Rouge River Over-looking the Birmingham Golf Club
JUST WEST OF SOUTHFIELD ROAD

Construction Will Be Started Soon On
2 NEW "PETERSEN" HOMES

Recently Purchased by Discriminating Buyers

ARVID C. PETERSEN CO.

"Builders of Fine Homes For Over 20 Years"

BIRMINGHAM BRANCH

411 E. Maple Ave. • Phone 916 • Arthur J. Tuggey, Mgr.
HOWARD E. TUGGEY, Sales Mgr.

BROOK BRIEFS

For Rent . . . Quanton School District

3 Bedroom, 1 Bath, Stove, Refrigerator, Oil Heat,
Landscape lot.

Call

MAX BROOCK, INC.

About a Home

Located in Bloomfield Hills—commanding a view from its hill top location that sets it apart as an estate with character.

Many varieties of fruit trees, shade trees, expensive shrubs and flowers add to this country setting of approximately four acres.

The home contains three bedrooms and two baths, a large living room with a commanding view and natural fireplace.

A separate guest house containing two bedrooms and bath, living room, dinette kitchen and separate garage makes this an exceptional value at

\$14,500.00

Judson Bradway Co.

REALTORS

BIRMINGHAM OFFICE
259 So. Woodward
Phone 38 or Elm. 6747

DETROIT OFFICE
5th Floor Majestic Bldg.
Phone RA 9700

INVEST WORRY FREE!

Avoid the uncertainties of speculative securities! Enjoy freedom from worrying about market fluctuations wiping out your principal! And earn a worthwhile return on your savings, as well.

These are the advantages of investing with this reliable thrift and home financing institution, where money is backed by one of the most stable securities known... monthly repayable first mortgages on American homes! Let us give you full details now.



Cavern, Canyon, Desert Are High Spots of Journey to California

By LILLIAN DIEDERICH

GOOD MORNING: A pleasant good morning here in the golden state of California with temperature at 72 degrees and genial Old Sol beaming down on this beautiful country. A lively breeze fresh as fresh blows across the bay at the San Francisco Exposition and the flags of all nations flutter and unfurl in harmonious accord and ripple in friendly fashion at the Fair on beautiful Treasure Island.

But to flash back . . . and relate the goings on concerning our trek across the states. Teen-age son, Bob, and I, drove the southern route to the coast. We plan on stopping up the coast of California to Portland, Oregon, where we hope to sell our coupe and return to Birmingham by rail over the northern route.

Roads Like Glass
Practically all the 2,800 miles to Frisco are of roads like glass. Much of the driving was made easier by simply setting the throttle on the dash board, for there are no cross roads and the towns are well spaced. The price for twin bed cabins is \$2. A particularly attractive "court" drew us as a magnet after a long hot drive across the Mohave desert. The grounds were well landscaped; rock gardens, cacti, trees, and fields of flowers peculiar to the desert, hosted the nightly rate to \$4. Food prices along the way are within reason and average about the same in all states. Gasoline however varies greatly. We went from 14 to 28 cents a gallon. We took eight days of about nine hours a day driving from Birmingham to San Francisco. Almost two entire days were spent in sight-seeing for we took in all points particularly renowned.

In Marvelous Caverns
Our first side trip, 20 miles off our route, was to the celebrated Meramec caverns located in the Ozarks in Missouri. It was a hot, dusty trip over winding roads. The temperature was 94° but when we drove into the side of the cavern in the heart of the mountain we found it was barely 50°. The drive-in holds 300 cars at a time. The conducted tour takes about two hours and covers four floors each level offering new and different surprises of sparkling calcite formations hanging from the ceilings. Some of the stalactites being 75 feet high and resembling huge gorgeous drop curtains, lovelier than the most vivid imagination could picture. Beautiful beyond description and a haven for camera fiends! One level has a mammoth dance floor and orchestra pit in it. A fine place to go on a hot night, but the dampness from the constantly but slowly dripping water might prove unpleasant after a time. Of course the caverns are lighted.

Oklahoma appears to be a red state . . . though certainly not "in the red." The earth is a peculiar shade of red; even the dust on the

cars and highway is a brick color. Narrow dirt roads leading into the farms resemble long unwooded bolts of Ymas ribbon crisscrossing and tying the landscape into attractive parcels. Oklahoma City is running in oil; hundreds of working oil wells are to be seen. Right up to the city hall, the wells are pumping wealth into this prosperous state.

We jogged along with throttle set at 60 over the state of Texas. A flawless highway and here we took turns reading aloud so perfect is the stretch of over 400 miles. Nothing remarkable to write home about, except the serene landscape where thousands of horses and fine herds of cattle graze.

Thermometer at 110!
To me New Mexico was fascinating. The Spanish type houses of one story, so clean and white, with the bright tile roofs all laid in different patterns were very refreshing. The porches and sidewalks are painted to match the roofs and are most attractive. Arriving in Albuquerque we received the warm welcome. The thermometer had shot a 110. At this point so's to cinch a doubling Thomas I wish to state I had a shiping to verify this hot fact a Many Indian tribes live in and about Albuquerque lending a picturesque atmosphere. Although the town is situated in the midst of a desert it is abloom with flowers late months of the year. It is celebrated as a health resort; the high altitude keeps it dry. Indian squaws and Indian girls offer colorful hand woven bags, rugs, and throws are seen everywhere. New Mexico highways are easily colorful with Indian handicrafts. One would need to be color blind to resist the spell of their beautiful articles!

The Painted Desert in Arizona was our next stop. Temperatures rose steadily, it was as though all were dropped onto this place. But one glimpse of the GLOBES desert made my color fade into the background. The gorgeous coloring of the rocks and sands as far as the eye can see is breathtaking in beauty. Off in the distance the shading starting with delicate pink tones changing to red, to rust, to brown, then light green colors blending darker and yellows merging into orange make one think a mammoth box of wet paints had poured down from heaven and over the foothills of the mountains again. (See JOURNAL, Page 6, Part 2)



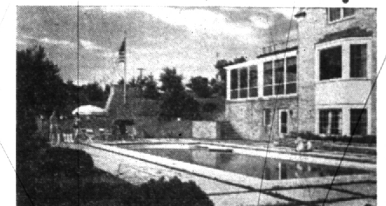
Beautiful old trees provide a perfect setting. The stone was specially quarried at Bayport, Michigan.

Newest Home in Bloomfield Hills for Sale— Owners required to Move East

WAN-A-KI-WIN (Peaceful Setting) is located in Bloomfield Hills just off Lone Pine Road on Winlake Road at the corner of Ponvalley. Owner-built in 1939, it possesses every home quality the most discriminating buyer could desire.

It was designed and supervised by J. Robert F. Swanson, architect, to provide a place where the owners and friends could enjoy life in Bloomfield to the full.

Although only minutes from clubs, schools, and shopping districts—it is perfectly secluded from main traffic arteries. If you (or some friend) are considering a new home, Wan-a-ki-win offers many advantages that cannot be duplicated elsewhere.



Designed and built by Paddock of Los Angeles, the beautiful pool is equipped with the most modern filtering system.

No other Home in Bloomfield Offers so Many Advantages

Secluded but close-in
General Electric air-conditioning
50 x 20' pool with complete dressing rooms
Complete General Electric kitchen
Outdoor and indoor grilles

Beautiful old trees
Low taxes
Horton automatic garage doors
28' x 18' living room with "picture" window bay
28' x 16' living porch
Large library, paneled in Bayotewood

SNYDER BUCK & BENNETT
Birmingham 1100 Elmhurst 6565

Tell Your Merchant You Saw His Advertisement in THE BIRMINGHAM ECCENTRIC

BUDGET BUY

Within a mile and a half from the center of Birmingham on a beautifully landscaped site (95 x 130) is the year's most attractive offering.

Here in the low tax area is a five bedroom, two bath house ready for you to move in. The living room, library and dining room are all carpeted. The kitchen has an electric range. From the quiet screened porch is a view of attractively planted shrubs, white birch and elms, green lawns.

A paneled rumpus room with built-in bar complements the neatly arranged work rooms in the basement. Oil heat, storm sash, copper screens, new softener and complete insulation. The taxes are low as is the price—only \$11,500.

MAX BROOCK, INC.

ESTABLISHED 1895

112 S. WOODWARD AVE. 3087 W. GRAND BLVD.
BIRMINGHAM 1212 MADISON 8782

Attractive White Colonial . . . \$9,800
3 bedrooms, 2 baths, Quanton School district.

Brick English Cottage . . . \$11,500
Beautifully landscaped, 4 bedrooms, 2 baths, low cost oil heat.

These fine homes can be purchased on 10% down and monthly payments that are better than paying rent.

Call 1250 for details and appointment

Walsh, James & Wasey Co.

DETROIT, BIRMINGHAM, LA FAYETTE, MOBILE, TAMPA
BLOOMFIELD HILLS, NORTH MICHIGAN LAKES
Main Offices Permanent Bldg.

FOR Birmingham- Bloomfield Hills PROPERTIES CONSULT

DAVID FITCH

139 W. Maple Phone 1234

MAURICE B. KIMMINS ARCHITECTURE Phone: Birmingham 1415

INSURANCE BONDS THE BIRMINGHAM AGENCY

CHAS. B. RANDALL
OSCAR P. PETERSON

Insurance for
Every Need

PHONE 840
106 S. WOODWARD - BIRMINGHAM

The Birmingham National Bank

"Birmingham's Community Bank"

MEMBER FEDERAL RESERVE SYSTEM

Member Federal Deposit Insurance Corporation



SAVINGS INSURED UP TO **\$5,000**

BIRMINGHAM FEDERAL SAVINGS & LOAN ASS'N

243 East Maple Ave.