

# Police-Fire Protection Is Finest

Park Supt.



F. J. Watkins

Mr. Watkins, who resides at 952 Ridgedale avenue, is superintendent of Birmingham's Springdale Park, a 55-acre plot of land situated in the northeast section of Birmingham. It is he who makes provision for parties, picnics, etc. for the public.

Birmingham's Police Department



The Chief of Police is charged with the enforcement within the city, of the laws of the United States, the state, and of the charter and within the City.

Here you observe Birmingham's Police Department consisting of 17 men and one woman. These officers patrol the City day and night, the year 'round. In the summer, two motorcycles are operated

to handle traffic, while scout cars perform at night. Birmingham's Police Dept. also has a radio-broadcasting and receiving system, making up-to-date the facilities here for apprehending criminals and

preventing the increase of crime. In the above picture the Department's personnel is, from left to right:

First row: Chief John P. Hackett, Lieut. Richard S. Lawler, DeLyle Service. Second row: Miss Carrie Stoddard, Malcolm Ross, Sergt. Earl L. Moody, Sergt. George Stephenson, Robert Emmett. Third row: Sam Stinson, Leo Stiers, Robert Pepperall, Robert Appell. Fourth row: Sergt. William M. Green, Henry Timm, Larry Kamin, Ralph Bell, and Robert Dunn. Officer Grant Springstead, on vacation, is not in the picture.

Police Chief



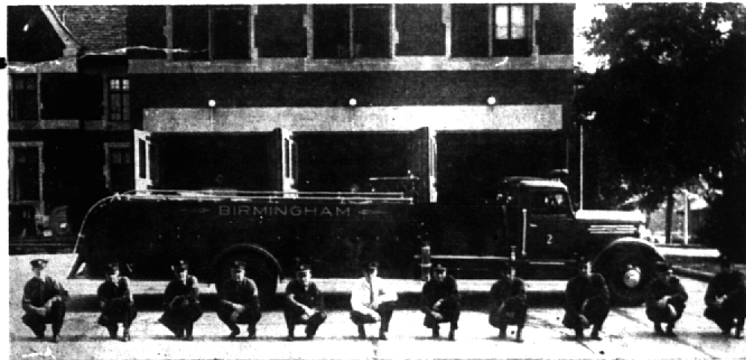
John P. Hackett, of 1161 Birmingham Boulevard, was appointed Chief of Police in May, 1930.

Fire Chief



Vernon W. Griffith. He was appointed City Fire Chief in 1931.

## Our Paid Fire Department



A few weeks ago The Eccentric photographer posed Birmingham's Fire Department in the eastern rear of the Municipal Building, where the Department is

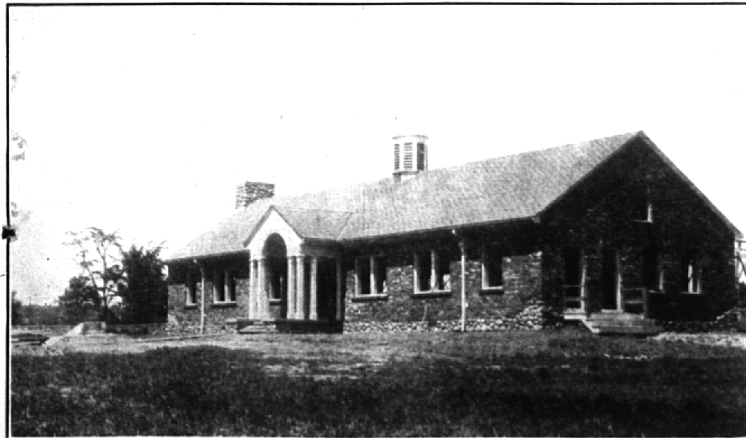
located. This represents the paid members, although a volunteer staff of more than a score of local businessmen and private citizens is ready to respond to emergency

calls. Birmingham has a 6th class rated Department, which makes insurance rates within the City much less than outside in the nearby unincorporated areas.

## Civic Center Park



## Clubhouse At Springdale Park



Above is pictured the clubhouse at Springdale Park, an area of 55 acres on the northeast edge of the City. Facilities for golf, shuffle-

board, tennis, baseball and softball, with many outdoor picnic tables and several open fire place grills, are available to the public.

In cooler weather the clubhouse is used for picnics and parties. Springdale Park is used by hundreds of people every week.



Between the Baldwin Public Library and the Municipal Building is an entire block of land, acquired by the City through condemnation proceedings. It is beautifully landscaped, and from a tall and stately pine tree in one corner of the park each Christmas there are strung colored lights,

making it a natural Christmas tree for the holiday season in late December. The block is bounded by Bates, Merrill, Martin, and Henrietta streets. This park block, together with the blocks on which the City's Municipal Building and Library are located, constitutes Birmingham's Civic Center.