

CITY AGREES TO TERMS OF TOWNSHIP

(Continued from Page One) The agreement stipulates that the remaining common assets and liabilities shall belong to and be assumed by Troy Township to the extent of 79.56 percent, and the City of Birmingham, 20.44 percent. It further specifies that an account shall be maintained by Troy Township to show a record of receipts and disbursements subsequent to May 31, 1938. This account is to be available for auditing at all times by both parties. The 1935 Refunding Bonds issued by the Township to refund tax anticipation notes outstanding at the time of the separation, are to be retired "as rapidly as possible," the agreement states, by the Township. It states also that 20.44 percent of any and all payments made since May 31 of this year or subsequently made upon the principal of and interest on these bonds, shall be charged to the City of Birmingham against any credits which may have in the Troy-Birmingham Account.

Terms specified in the agreement sets forth, the credit balance of the City of Birmingham in this account, is not equal to such charges against the City, it shall pay the difference in cash to Troy Township. Upon the retirement of all outstanding 1935 Refunding Bonds, the common assets shall be divided between the Township and the City, and the amount of such assets based on their interests appear. By terms of the agreement, the Township agreed to pay not less than 20 percent of the collections of delinquent operating taxes to Birmingham in monthly payments against the 1934 bonds owed to the City by the Township. The indebtedness may be further reduced, the agreement sets forth, at the option of Troy Township from credits or charges accruing to the Township.

Great Lakes College Anticipates Increases

An increased enrollment is anticipated when Great Lakes College in Ferndale opens its doors Monday morning for the beginning of the fall term. "Judging from the number who have already registered in the liberal arts and business divisions and the applications received from distant cities as well as from local communities, it is expected that the enrollment will at least double that of last semester," says Clayton J. Ettinger, president of the college said this week. Speaking in a photograph, fashion design and illustration, dressmaking, tank or seafair gardening will be offered providing enough interest is evidenced in the subjects to warrant their being organized, Dr. Ettinger said. Specialized subjects for adults and parent-teacher groups will also be offered.

CASH AND CARRY Men's 3 Pc. Suits \$1.09 Ladies' Plain Dresses CLEANED AND PRESSED PECK'S Woodward—near Maple

An Estate Cottage - Rent Brand new, colonial. Exclusive, park-like surroundings. Private, quiet. Five minutes from Birmingham. Two People Only \$70.00

DOGS BOARDED TRAINED TRIMMED JAGERS KENNELS 3520 N. Adams Ph. 246

MODERN STORAGE FIREPROOF CONSTRUCTION GAUKLER Local and Long Distance MOVING B'ham 10240 GAUKLER Storage Co. 9 Orchard Lake Ave. PONTIAC

HOW BIRMINGHAM, BLOOMFIELD HILLS, AND TOWNSHIP VOTED

Table with columns: Republican, Democrat, Precinct, TOTAL (For Birmingham Only), Bloomfield Hills, Township. Rows include GOVERNOR, LIEUT. GOV., REP. IN CONGRESS, STATE SENATOR, STATE REP., PROBATE JUDGE, PROSECUTOR, SHERIFF, COUNTY CLERK, COUNTY TREAS., REG. OF DEEDS, CIRCUIT COURT COMMISSIONER, DRAIN COMM., CORONER, COUNTY SURVEYOR.

Table with columns: Democrat, Precinct, TOTAL (For Birmingham Only), Bloomfield Hills, Township. Rows include GOVERNOR, LIEUT. GOV., REP. IN CONGRESS, STATE SENATOR, STATE REP., PROBATE JUDGE, PROSECUTOR, SHERIFF, COUNTY CLERK, COUNTY TREAS., REG. OF DEEDS, CIRCUIT COURT COMMISSIONER, DRAIN COMM., CORONER, COUNTY SURVEYOR.

UNDER G. O. P. BANNER



Charles L. Wilson



Arthur E. Moore



Verne C. Hampton



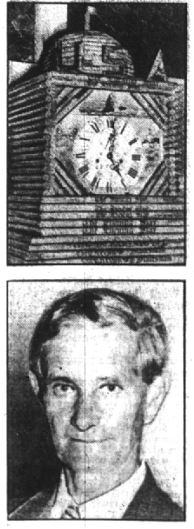
Spencer C. Howarth

Oakland County Republicans will be able to give their support to the Primary Tuesday, at the nomination of Prosector, Moor defeated three Pontiac attorneys in the race for Probate Judge, and Hampton won the nomination for Circuit Court Commissioner, and Howarth, present Sheriff, was assured of the support of his party in winning the nomination.

FITZGERALD CARRIES CITY AND STATE IN PRIMARY

(Continued from Page One) Mayor Harry A. Kling and Timothy McLean, Commerce; Clayton H. Lilly, State Representative; John Brown, State Senator; Samuel G. Backus, Congressman; George A. Schroeder, Lieut. Governor. Ratio is 92.3 to 7.7. Bloomfield Hills City and Township also, were overwhelmingly Republican in Tuesday's primary election, in the Hills Fitzgerald received 118 votes against Toy's 109; the Township gave Fitzgerald 244 votes and Toy 133. Governor Murphy got 7 Hills' votes and 4 Township votes, added to the 129 he received in Birmingham, the present Governor received a total of 176 votes from entire Bloomfield Township territory, which includes the two cities; in this same area the Republican vote totaled 2276 votes. The ratio in this area, then, was approximately: Republican 92.3 per cent; Democratic 7.7 per cent. Complete statistics on the Birmingham, Bloomfield Hills, and Township voting may be found in the accompanying tabulation.

Clock That Paper Built and Buider



Strange and wonderful are the pursuits of men, but the "House of Paper" built by Elis F. Steinar, lower photo, of Pigeon Cove, Mass., is the strangest. The house and every object of furniture in it are built of newspapers from all parts of the world. The grandfather's clock, top photo, is constructed of newspapers from all the capital cities of the United States.

PARAGRAPHS

An Early American Term. What the modern dictator calls a conquest used to be known in this country as jumping a claim. -Macon Telegraph. Pre-New Deal. We can remember when "billion" would have been regarded as a misprint for a thousand. -Chicago Daily News. Is Crazy. A Boston secretary who belatedly her employers will insist on it. Anybody who kills any employe... -Detroit News. Must Be. We are continually being as dumb before declaring war. Then... -Chicago Daily News.

PERSONALITIES IN MUSIC JOHN W. BRATTON, A.S.C.A.P. Keeping Young With Melody

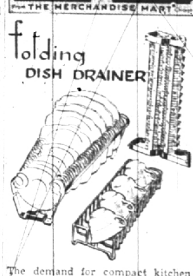


By Daniel I. McNamara JOHN W. Bratton, song writer for more than half a century now at seventy-one years, links the modern school of song with the traditions of the Gay Nineties. Long before the turn of the century he composed "The Sinking of Paradise Alley," which still moves grand parents to recollections of their childhood. And last year his "Sweetheart, Let's Goo Old To gether" swept England, then America, as one of the hits of the year. His wife and daughter, shown above, are his foster-children. A native of Wilmington, Del., Bratton was successively choir singer, theatrical amateur, and finally a singer in Broadway productions. Early in his theatrical career he created "The Sunshine of Paradise Alley," he was unable to keep pace with the demands for his product. He wrote all the songs for memorable musical shows, "Hodge Podge & Co.," "The Pearl and the Pumpkin," "The Star and Garter," and "The Man from China." Celebrities who sang Bratton's songs were—Edna May Hattie Williams, Francis Wilson, Al Ritzie, Marie Cahill, Joe Corgan, Charles Bigelow, Stella Mayhew, Frank Daniels. From being writing he expanded into theatrical production and conducted tours of more than 100 shows throughout the country, and the motion picture crowded the living corners out of the theatres. A bean counter of Victor Herbert, he was one of the first to be associated with Herbert in 1914 in the organization of the American Society of Composers, Authors and Publishers, through which creators of song obtain copyright protection by joint action unattainable by individual effort. The society now numbers more than 1,000. It lists more than 500 of Bratton's copyrighted songs. Bratton's interest in A.S.C.A.P. shares his loyalty to the Lambi, famous New York theatrical club of which he is a life member. Almost daily he may be seen in a smock in the Lambi, writing lyrics of composing music for his stage acts.

'SYMPATHY WITH NEW DEAL' SAYS MRS. ORMOND

"A Woman Looks at the New Deal" was the subject of an address Mrs. Ormond gave Wednesday evening before the Women's Auxiliary of the Birmingham Governmental Reform Committee, to members of the Birmingham Democratic Club at the American Legion Home on South Woodward Avenue. "America has grown great on the philosophy of individualism of each man for himself, and the development of the individualism of individualism is much counterbalanced with one of conservatism. And because the New Deal was not only aware of this creed, but actually got something about it, I find my sympathies entirely with the New Deal." "During the days of a 'chicken in every pot' and 'two cats in every garage,' there were millions of Americans unemployed and unemployed who depended entirely upon private charity for their very existence. There was inadequate housing and vast slum areas. We had to wait for the New Deal to establish such needed social projects such as old age pensions, unemployment insurance, low cost housing projects and slum clearance to mention just a few." "Perhaps no single project of the New Deal has been so criticized as the W.P.A., Mrs. Ormond stated. She said that the goal of achievement is stupendous." "Other New Deal policies commended by the Starangled Banner, Mr. Roosevelt and the New Deal are the most reliable instruments to achieve the better life for America as a whole, to support him, not only with our votes, but wholeheartedly at all times," Mrs. Ormond concluded.

WHAT NEXT



The demand for compact kitchen utensils is met by this dish drainer. It holds dishes upright between horizontal springs and corrugated rubber strips. The rubber covered basket holds silverware, cups and glasses. When not in use both units fold up compactly as shown, enabling it to be tucked away in the cupboard. Joy to the Truck Driver. A lorry driver became weary of his work and gave up to join the police force. Asked some months later what he thought of his new job, the ex-driver replied the pay was good, the hours satisfactory, but what he liked best of all was that the customer was always wrong. Try an Eccentric Classified Ad for quick results.

COMMUNITY SING TO CLOSE YEAR'S PLAY PROGRAM

(Continued from Page One) Hatcher, Roy A. Tackett, A. Tackett, the Starangled Banner. To acquaint those interested with the Sing, and the time and place at which it will be held, the Committee has worked out several novel features. In a window on Woodward, arranged in groups, puppets arranged by Barbara Brasso, advertise the sing, as do dolls staged, a "community sing" in an effort to attract attention to the school, also arranged by Miss Brasso, and a sign by Donald Noel, pointing directly to Pierce School, at the corner of Woodward and Fourteen Mile roads. The program will close with a brief report of the Summer Recreation Program by Miles W. Robinson, director. Mrs. Thomas R. Navin was general chairman of social activities, and Mrs. H. H. Corson is chairman of the Community Sing Committee. Technical arrangements will be in charge of Dick and Johnston and William Salisbury.

Post Vacation SPECIALS

Reg. 50c Prophylactic Tooth Brushes Adult Size 3 for \$1.00 Reg. 50c Tek Tooth Brushes (1 cent sale) 2 for 51c Reg. 65c Fitch Shampoo—With rubber Massage Brush (A \$1.25 value) 59c Med. Size—Jergens Lotion—With a jar of Jergens Cold Cream BOTH for 45c Reg. 60c Wild Root Hair Tonic—With Oil 2 for 61c NEW LIPTON LIQUID LIPSTICK All Shades \$1.00 Bottle (As advertised in Vogue) SHAIN'S DRUG PHONE 61. WE DELIVER