

A friend of mine who likes fishing says: "Why don't you write more about fishing?" Well, a fellow who likes to fish can't write much in this small space, can he?

SIXTIETH YEAR—NO. 40

SURPLUS CROP OF POTATOES TO BE USED FOR NEEDY

As the result of insistent demands made by E. R. Eaton, editor of The Plymouth Mail and state representative from the rural district of Wayne county, a part of Michigan's surplus potato crop will be used for welfare purposes instead of being entirely destroyed. An announcement has just been made by the state agricultural commissioner that the Federal Surplus Commodity Corporation has agreed to purchase Michigan potatoes for welfare purposes. This plan will divert

some of the potatoes from the pig pens of Michigan to the dining tables of unemployed people. It was stated by the state agricultural department, some two weeks ago that Michigan surplus potatoes were to be destroyed or fed to livestock. Eaton's strong protest to the destruction followed, with the recommendation that the potatoes be bought from the farmers and used for welfare purposes, which the department now consents to do. His written state commissioner of agriculture commending him for changing his plan. Eaton further recommends that all ungraded potatoes be bought from the grocers and used for welfare purposes. He contends that this proposed purchase would in no way effect the market for good potatoes, as exceedingly few people on welfare now buy any potatoes at all.

PLAN OF IDEAL SCHOOL OUTLINED TO QUARTON PTA

Understanding of mutual problems between home and school is one of the phases of the ideal school as described by Dr. John Sullivan, professor of psychology in the College of Education of Wayne University, in an address Monday evening to members of the Quarton School Parent Teacher Association, at the school.

Dr. Sullivan chose for his subject "What Is a Good Modern School?" In answer, he informed his audience that the ideal school is one in which expansion and building equipment are not the dominant aims, but are considered secondary to maintaining a competent teaching staff.

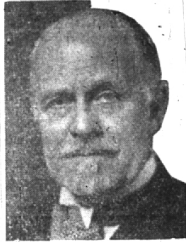
"The school is one of the agencies concerned with the physical and psychological development of the child," Dr. Sullivan told his audience. "The home and school are both social agencies, which must work together to produce a well-adjusted child who can find himself in the community in which he lives."

"The primary aim of a school is not the development of specific skill and knowledge, but to ascertain how these abilities function as useful materials for the child. Reading as a study is important only as reading does something for the child in broadening and enriching his life."

The teacher can not be concerned only with teaching subject matter, Dr. Sullivan pointed out. "She should neither lead the child through affection for her, nor by crack of the whip to cover a given amount of work, but should help the child to help himself," said Dr. Sullivan. "She must furnish a rich background of interest. She must see the child as a definite personality, and must know his individual level of maturity."

The classroom teacher, who stands as a second parent to the child, is the most important figure in the school, Dr. Sullivan told his audience. An informal period of questions and answers followed Dr. Sullivan's address, in which parents were given an opportunity to discuss educational problems with the speaker.

To Open Season



Burton Holmes

A new Africa, far different from that pictured by the explorer or big game hunter, will be presented in a lecture and motion picture at the Detroit Institute of Arts, Woodward at Kirby, next Sunday afternoon, January 6, at 2:30 by the veteran travel lecturer, Burton Holmes.

The subject is "A Motor Tour Through Brightest South Africa." Originally scheduled for Sunday evening, this novel motion picture lecture has been moved to the afternoon hour so that the sedentary holders of the World Adventure Series might enjoy it. This will be the only lecture Mr. Holmes will deliver Sunday.

Although he has been travelling throughout the world for almost fifty years, Mr. Holmes has never visited Africa until this past summer. He found that one can travel for thousands of miles by motor car, that it is difficult to find a loose wild animal outside the game preserves, and that Africa has beautiful cities with all the modern developments of the side of Africa, the romantic struggle of a land pulling itself out of the jungle, that Mr. Holmes pictures in his lecture and in his entertaining motion pictures.

At 8:30 Sunday evening, Jan. 16, Dr. Victor G. Heiser, author of "An American Doctor's Odyssey" and famous internationally as the private physician to the world, will speak at the Detroit Institute of Arts on "An American Doctor's Odyssey." Dr. Heiser will tell of his adventures throughout the world studying and helping to prevent dreaded plagues such as cholera, smallpox, beriberi, leprosy, etc.

Miscellaneous

Judge: "What's the charge against this man, officer?" Officer: "Bigotry, yer honor. He's got three wives."

Judge: "I'm surprised at your ignorance, officer. That's trigonometry, not bigotry."—The Lookout.

For as little as 25 cents you may insure a CLASSIFIED AD in the columns of THE BIRMINGHAM POST when you want to buy or sell, locate a house or tell one, or for better or bad, telephone it before Wednesday noon each week. —(Ad.)

DEATH COMES TO WARREN T. HANNA NEW YEAR'S DAY

Warren T. Hanna, son of a former Birmingham postmaster, died suddenly from a blood clot on the heart, early New Year's Day at his residence in Ypsilanti.

Mr. Hanna was born in Birmingham, Jan. 22, 1894, and attended "Noble" here, graduating from Baldwin High School in 1921. After graduation from the State Normal College, Mr. Hanna made his home in Ypsilanti, where he was associated with the WPA as recreational supervisor for Wadsworth and Monroe counties. However, he retained his membership in the Birmingham M. E. church.

Surviving are the widow, Mrs. Dorothy Hesse Hanna; his mother, Mrs. Blanche Hanna of Ann Arbor; and two brothers, J. Foster Hanna of Royal Oak and Donald L. Hanna of Ann Arbor.

Funeral services were held from the residence at 2 p. m., with a service at the grave in Greenwood Cemetery at 4 p. m.

STATE OF MICHIGAN—ORDER OF THE CONSERVATION COMMISSION, RESOLVING: ORDER IS MADE ON JANUARY 11, 1937, RESOLVING THAT THE ABOVE NAMED ORDER BE REVOKED.

An order was issued by the Conservation Commission on October 13, 1935, ordering the lines and regulation thereof in the inland waters of the State.

After a further investigation the Director of Conservation recommends the revoking of this order.

W. H. LORTIE, Director, Department of Conservation, Conservation Commission by: W. H. LORTIE, Chairman, WAYLAND OSGOOD, Secretary.

CHURCH WOMEN TO SPONSOR TALK ON WORLD AND WARS

Dr. Preston E. Slosson, professor of European history at the University of Michigan, who will come to Birmingham Jan. 15, to speak under auspices of the local Council of Church Women, is particularly well equipped to discuss the theme he selected, "The World Between Wars."

Dr. Slosson is the author of numerous books treating various phases of the European scene. Included among them are "Twentieth Century Europe," published in 1927; "The Problem of the Austro-German Union," published in 1929; and "Europe Since 1870," which made its appearance in 1935.

Dr. Slosson's study of international history dates back to the years 1913 to 1917, when he was assistant in history at Columbia University. It was from the same University that Dr. Slosson received the degrees of A. B., M. A., and Ph. D. In 1917, he became a member of the editorial staff of the New York Independent.

Subsequently, Dr. Slosson was associated with the Department of State in Washington, and served as assistant secretary of the American Commission to negotiate peace at the peace conference of Versailles. Returning to the United States, Dr. Slosson became literary editor of the New York Independent.

Visiting Professor Abroad In 1919, he came to the University of Michigan, where he has since served in his present capacity, with the exception of the year 1932 to 1933, when he was the Carnegie Visiting Professor at Manchester, Bristol and Glasgow Universities.

Dr. Slosson is the son of the late Dr. Edwin E. Slosson, who was noted both as a chemist and journalist, and of May Preston Slosson, who achieved considerable

reputation as a poet and as a speaker and worker for the cause of Woman Suffrage.

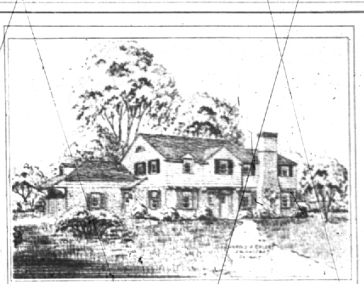
Introducing Dr. Slosson will be Mrs. Lee A. White. The lecture which will be held in the M. E. church, will follow dinner at 6:30 sharp. Mrs. John K. Ormond is in charge of arrangements and reservations.

PART TWO

\$2.00 PER YEAR—SINGLE COPIES, 5c

BIRD FLIES ON

Milford, N. J.—Hearing a crash of glass in the vicinity of his bathroom, Wm. H. Farrand, editor of The Milford Leader, left his breakfast to investigate. He found a pheasant floundering on the floor of his bathroom. The bird evidently saw its reflection in the window and charged it.



Harold H. Ehlers, Archt.

878 FAIRFAX AVENUE

This General Electric Equipped House Gives You EVERYTHING!

And that includes the leisure and ease of living that electric servants bring. You'll like the way this home is planned, its room arrangement, its air of spaciousness and charm. You'll like it, too, for its sound value.

Open next Sunday afternoon . . . or private showing at your request.

SNYDER BUCK & BENNETT

In Quarton Lake Estates

4 bedrooms, 2 baths, sun room, \$11,500.

PURITAN ROAD

Sun room and lavatory on 1st floor
5 bedrooms, 2 baths on 2nd floor
Terms with \$8000 HOLC mortgage.

Colonial 4 bedrooms, screen porch, \$7500.

Income home \$5250.

Now is the time to secure a real home
Reasonably Priced.

Walsh, James & Wasey Co.
DETROIT, BIRMINGHAM, KANSAS CITY, ST. LOUIS, ST. PAUL, MINN., CHICAGO, ILL., CLEVELAND, OHIO, PITTSBURGH, PA., PHILADELPHIA, PA., NEW YORK, N.Y., BALTIMORE, MD., WASHINGTON, D.C., SAN FRANCISCO, CALIF., LOS ANGELES, CALIF., SEATTLE, WASH., PORTLAND, ORE., SPOKANE, IDAHO, BUTTE, MONT., SALT LAKE CITY, UTAH, DENVER, COLO., KANSAS CITY, MO., ST. LOUIS, MO., CHICAGO, ILL., DETROIT, MICH., CLEVELAND, OHIO, PITTSBURGH, PA., PHILADELPHIA, PA., NEW YORK, N.Y., BALTIMORE, MD., WASHINGTON, D.C., SAN FRANCISCO, CALIF., LOS ANGELES, CALIF., SEATTLE, WASH., PORTLAND, ORE., SPOKANE, IDAHO, BUTTE, MONT., SALT LAKE CITY, UTAH, DENVER, COLO., KANSAS CITY, MO., ST. LOUIS, MO., CHICAGO, ILL., DETROIT, MICH., CLEVELAND, OHIO, PITTSBURGH, PA., PHILADELPHIA, PA., NEW YORK, N.Y., BALTIMORE, MD., WASHINGTON, D.C., SAN FRANCISCO, CALIF., LOS ANGELES, CALIF., SEATTLE, WASH., PORTLAND, ORE., SPOKANE, IDAHO, BUTTE, MONT., SALT LAKE CITY, UTAH, DENVER, COLO., KANSAS CITY, MO., ST. LOUIS, MO., CHICAGO, ILL., DETROIT, MICH., CLEVELAND, OHIO, PITTSBURGH, PA., PHILADELPHIA, PA., NEW YORK, N.Y., BALTIMORE, MD., WASHINGTON, D.C., SAN FRANCISCO, CALIF., LOS ANGELES, CALIF., SEATTLE, WASH., PORTLAND, ORE., SPOKANE, IDAHO, BUTTE, MONT., SALT LAKE CITY, UTAH, DENVER, COLO., KANSAS CITY, MO., ST. LOUIS, MO., CHICAGO, ILL., DETROIT, MICH., CLEVELAND, OHIO, PITTSBURGH, PA., PHILADELPHIA, PA., NEW YORK, N.Y., BALTIMORE, MD., WASHINGTON, D.C., SAN FRANCISCO, CALIF., LOS ANGELES, CALIF., SEATTLE, WASH., PORTLAND, ORE., SPOKANE, IDAHO, BUTTE, MONT., SALT LAKE CITY, UTAH, DENVER, COLO., KANSAS CITY, MO., ST. LOUIS, MO., CHICAGO, ILL., DETROIT, MICH., CLEVELAND, OHIO, PITTSBURGH, PA., PHILADELPHIA, PA., NEW YORK, N.Y., BALTIMORE, MD., WASHINGTON, D.C., SAN FRANCISCO, CALIF., LOS ANGELES, CALIF., SEATTLE, WASH., PORTLAND, ORE., SPOKANE, IDAHO, BUTTE, MONT., SALT LAKE CITY, UTAH, DENVER, COLO., KANSAS CITY, MO., ST. LOUIS, MO., CHICAGO, ILL., DETROIT, MICH., CLEVELAND, OHIO, PITTSBURGH, PA., PHILADELPHIA, PA., NEW YORK, N.Y., BALTIMORE, MD., WASHINGTON, D.C., SAN FRANCISCO, CALIF., LOS ANGELES, CALIF., SEATTLE, WASH., PORTLAND, ORE., SPOKANE, IDAHO, BUTTE, MONT., SALT LAKE CITY, UTAH, DENVER, COLO., KANSAS CITY, MO., ST. LOUIS, MO., CHICAGO, ILL., DETROIT, MICH., CLEVELAND, OHIO, PITTSBURGH, PA., PHILADELPHIA, PA., NEW YORK, N.Y., BALTIMORE, MD., WASHINGTON, D.C., SAN FRANCISCO, CALIF., LOS ANGELES, CALIF., SEATTLE, WASH., PORTLAND, ORE., SPOKANE, IDAHO, BUTTE, MONT., SALT LAKE CITY, UTAH, DENVER, COLO., KANSAS CITY, MO., ST. LOUIS, MO., CHICAGO, ILL., DETROIT, MICH., CLEVELAND, OHIO, PITTSBURGH, PA., PHILADELPHIA, PA., NEW YORK, N.Y., BALTIMORE, MD., WASHINGTON, D.C., SAN FRANCISCO, CALIF., LOS ANGELES, CALIF., SEATTLE, WASH., PORTLAND, ORE., SPOKANE, IDAHO, BUTTE, MONT., SALT LAKE CITY, UTAH, DENVER, COLO., KANSAS CITY, MO., ST. LOUIS, MO., CHICAGO, ILL., DETROIT, MICH., CLEVELAND, OHIO, PITTSBURGH, PA., PHILADELPHIA, PA., NEW YORK, N.Y., BALTIMORE, MD., WASHINGTON, D.C., SAN FRANCISCO, CALIF., LOS ANGELES, CALIF., SEATTLE, WASH., PORTLAND, ORE., SPOKANE, IDAHO, BUTTE, MONT., SALT LAKE CITY, UTAH, DENVER, COLO., KANSAS CITY, MO., ST. LOUIS, MO., CHICAGO, ILL., DETROIT, MICH., CLEVELAND, OHIO, PITTSBURGH, PA., PHILADELPHIA, PA., NEW YORK, N.Y., BALTIMORE, MD., WASHINGTON, D.C., SAN FRANCISCO, CALIF., LOS ANGELES, CALIF., SEATTLE, WASH., PORTLAND, ORE., SPOKANE, IDAHO, BUTTE, MONT., SALT LAKE CITY, UTAH, DENVER, COLO., KANSAS CITY, MO., ST. LOUIS, MO., CHICAGO, ILL., DETROIT, MICH., CLEVELAND, OHIO, PITTSBURGH, PA., PHILADELPHIA, PA., NEW YORK, N.Y., BALTIMORE, MD., WASHINGTON, D.C., SAN FRANCISCO, CALIF., LOS ANGELES, CALIF., SEATTLE, WASH., PORTLAND, ORE., SPOKANE, IDAHO, BUTTE, MONT., SALT LAKE CITY, UTAH, DENVER, COLO., KANSAS CITY, MO., ST. LOUIS, MO., CHICAGO, ILL., DETROIT, MICH., CLEVELAND, OHIO, PITTSBURGH, PA., PHILADELPHIA, PA., NEW YORK, N.Y., BALTIMORE, MD., WASHINGTON, D.C., SAN FRANCISCO, CALIF., LOS ANGELES, CALIF., SEATTLE, WASH., PORTLAND, ORE., SPOKANE, IDAHO, BUTTE, MONT., SALT LAKE CITY, UTAH, DENVER, COLO., KANSAS CITY, MO., ST. LOUIS, MO., CHICAGO, ILL., DETROIT, MICH., CLEVELAND, OHIO, PITTSBURGH, PA., PHILADELPHIA, PA., NEW YORK, N.Y., BALTIMORE, MD., WASHINGTON, D.C., SAN FRANCISCO, CALIF., LOS ANGELES, CALIF., SEATTLE, WASH., PORTLAND, ORE., SPOKANE, IDAHO, BUTTE, MONT., SALT LAKE CITY, UTAH, DENVER, COLO., KANSAS CITY, MO., ST. LOUIS, MO., CHICAGO, ILL., DETROIT, MICH., CLEVELAND, OHIO, PITTSBURGH, PA., PHILADELPHIA, PA., NEW YORK, N.Y., BALTIMORE, MD., WASHINGTON, D.C., SAN FRANCISCO, CALIF., LOS ANGELES, CALIF., SEATTLE, WASH., PORTLAND, ORE., SPOKANE, IDAHO, BUTTE, MONT., SALT LAKE CITY, UTAH, DENVER, COLO., KANSAS CITY, MO., ST. LOUIS, MO., CHICAGO, ILL., DETROIT, MICH., CLEVELAND, OHIO, PITTSBURGH, PA., PHILADELPHIA, PA., NEW YORK, N.Y., BALTIMORE, MD., WASHINGTON, D.C., SAN FRANCISCO, CALIF., LOS ANGELES, CALIF., SEATTLE, WASH., PORTLAND, ORE., SPOKANE, IDAHO, BUTTE, MONT., SALT LAKE CITY, UTAH, DENVER, COLO., KANSAS CITY, MO., ST. LOUIS, MO., CHICAGO, ILL., DETROIT, MICH., CLEVELAND, OHIO, PITTSBURGH, PA., PHILADELPHIA, PA., NEW YORK, N.Y., BALTIMORE, MD., WASHINGTON, D.C., SAN FRANCISCO, CALIF., LOS ANGELES, CALIF., SEATTLE, WASH., PORTLAND, ORE., SPOKANE, IDAHO, BUTTE, MONT., SALT LAKE CITY, UTAH, DENVER, COLO., KANSAS CITY, MO., ST. LOUIS, MO., CHICAGO, ILL., DETROIT, MICH., CLEVELAND, OHIO, PITTSBURGH, PA., PHILADELPHIA, PA., NEW YORK, N.Y., BALTIMORE, MD., WASHINGTON, D.C., SAN FRANCISCO, CALIF., LOS ANGELES, CALIF., SEATTLE, WASH., PORTLAND, ORE., SPOKANE, IDAHO, BUTTE, MONT., SALT LAKE CITY, UTAH, DENVER, COLO., KANSAS CITY, MO., ST. LOUIS, MO., CHICAGO, ILL., DETROIT, MICH., CLEVELAND, OHIO, PITTSBURGH, PA., PHILADELPHIA, PA., NEW YORK, N.Y., BALTIMORE, MD., WASHINGTON, D.C., SAN FRANCISCO, CALIF., LOS ANGELES, CALIF., SEATTLE, WASH., PORTLAND, ORE., SPOKANE, IDAHO, BUTTE, MONT., SALT LAKE CITY, UTAH, DENVER, COLO., KANSAS CITY, MO., ST. LOUIS, MO., CHICAGO, ILL., DETROIT, MICH., CLEVELAND, OHIO, PITTSBURGH, PA., PHILADELPHIA, PA., NEW YORK, N.Y., BALTIMORE, MD., WASHINGTON, D.C., SAN FRANCISCO, CALIF., LOS ANGELES, CALIF., SEATTLE, WASH., PORTLAND, ORE., SPOKANE, IDAHO, BUTTE, MONT., SALT LAKE CITY, UTAH, DENVER, COLO., KANSAS CITY, MO., ST. LOUIS, MO., CHICAGO, ILL., DETROIT, MICH., CLEVELAND, OHIO, PITTSBURGH, PA., PHILADELPHIA, PA., NEW YORK, N.Y., BALTIMORE, MD., WASHINGTON, D.C., SAN FRANCISCO, CALIF., LOS ANGELES, CALIF., SEATTLE, WASH., PORTLAND, ORE., SPOKANE, IDAHO, BUTTE, MONT., SALT LAKE CITY, UTAH, DENVER, COLO., KANSAS CITY, MO., ST. LOUIS, MO., CHICAGO, ILL., DETROIT, MICH., CLEVELAND, OHIO, PITTSBURGH, PA., PHILADELPHIA, PA., NEW YORK, N.Y., BALTIMORE, MD., WASHINGTON, D.C., SAN FRANCISCO, CALIF., LOS ANGELES, CALIF., SEATTLE, WASH., PORTLAND, ORE., SPOKANE, IDAHO, BUTTE, MONT., SALT LAKE CITY, UTAH, DENVER, COLO., KANSAS CITY, MO., ST. LOUIS, MO., CHICAGO, ILL., DETROIT, MICH., CLEVELAND, OHIO, PITTSBURGH, PA., PHILADELPHIA, PA., NEW YORK, N.Y., BALTIMORE, MD., WASHINGTON, D.C., SAN FRANCISCO, CALIF., LOS ANGELES, CALIF., SEATTLE, WASH., PORTLAND, ORE., SPOKANE, IDAHO, BUTTE, MONT., SALT LAKE CITY, UTAH, DENVER, COLO., KANSAS CITY, MO., ST. LOUIS, MO., CHICAGO, ILL., DETROIT, MICH., CLEVELAND, OHIO, PITTSBURGH, PA., PHILADELPHIA, PA., NEW YORK, N.Y., BALTIMORE, MD., WASHINGTON, D.C., SAN FRANCISCO, CALIF., LOS ANGELES, CALIF., SEATTLE, WASH., PORTLAND, ORE., SPOKANE, IDAHO, BUTTE, MONT., SALT LAKE CITY, UTAH, DENVER, COLO., KANSAS CITY, MO., ST. LOUIS, MO., CHICAGO, ILL., DETROIT, MICH., CLEVELAND, OHIO, PITTSBURGH, PA., PHILADELPHIA, PA., NEW YORK, N.Y., BALTIMORE, MD., WASHINGTON, D.C., SAN FRANCISCO, CALIF., LOS ANGELES, CALIF., SEATTLE, WASH., PORTLAND, ORE., SPOKANE, IDAHO, BUTTE, MONT., SALT LAKE CITY, UTAH, DENVER, COLO., KANSAS CITY, MO., ST. LOUIS, MO., CHICAGO, ILL., DETROIT, MICH., CLEVELAND, OHIO, PITTSBURGH, PA., PHILADELPHIA, PA., NEW YORK, N.Y., BALTIMORE, MD., WASHINGTON, D.C., SAN FRANCISCO, CALIF., LOS ANGELES, CALIF., SEATTLE, WASH., PORTLAND, ORE., SPOKANE, IDAHO, BUTTE, MONT., SALT LAKE CITY, UTAH, DENVER, COLO., KANSAS CITY, MO., ST. LOUIS, MO., CHICAGO, ILL., DETROIT, MICH., CLEVELAND, OHIO, PITTSBURGH, PA., PHILADELPHIA, PA., NEW YORK, N.Y., BALTIMORE, MD., WASHINGTON, D.C., SAN FRANCISCO, CALIF., LOS ANGELES, CALIF., SEATTLE, WASH., PORTLAND, ORE., SPOKANE, IDAHO, BUTTE, MONT., SALT LAKE CITY, UTAH, DENVER, COLO., KANSAS CITY, MO., ST. LOUIS, MO., CHICAGO, ILL., DETROIT, MICH., CLEVELAND, OHIO, PITTSBURGH, PA., PHILADELPHIA, PA., NEW YORK, N.Y., BALTIMORE, MD., WASHINGTON, D.C., SAN FRANCISCO, CALIF., LOS ANGELES, CALIF., SEATTLE, WASH., PORTLAND, ORE., SPOKANE, IDAHO, BUTTE, MONT., SALT LAKE CITY, UTAH, DENVER, COLO., KANSAS CITY, MO., ST. LOUIS, MO., CHICAGO, ILL., DETROIT, MICH., CLEVELAND, OHIO, PITTSBURGH, PA., PHILADELPHIA, PA., NEW YORK, N.Y., BALTIMORE, MD., WASHINGTON, D.C., SAN FRANCISCO, CALIF., LOS ANGELES, CALIF., SEATTLE, WASH., PORTLAND, ORE., SPOKANE, IDAHO, BUTTE, MONT., SALT LAKE CITY, UTAH, DENVER, COLO., KANSAS CITY, MO., ST. LOUIS, MO., CHICAGO, ILL., DETROIT, MICH., CLEVELAND, OHIO, PITTSBURGH, PA., PHILADELPHIA, PA., NEW YORK, N.Y., BALTIMORE, MD., WASHINGTON, D.C., SAN FRANCISCO, CALIF., LOS ANGELES, CALIF., SEATTLE, WASH., PORTLAND, ORE., SPOKANE, IDAHO, BUTTE, MONT., SALT LAKE CITY, UTAH, DENVER, COLO., KANSAS CITY, MO., ST. LOUIS, MO., CHICAGO, ILL., DETROIT, MICH., CLEVELAND, OHIO, PITTSBURGH, PA., PHILADELPHIA, PA., NEW YORK, N.Y., BALTIMORE, MD., WASHINGTON, D.C., SAN FRANCISCO, CALIF., LOS ANGELES, CALIF., SEATTLE, WASH., PORTLAND, ORE., SPOKANE, IDAHO, BUTTE, MONT., SALT LAKE CITY, UTAH, DENVER, COLO., KANSAS CITY, MO., ST. LOUIS, MO., CHICAGO, ILL., DETROIT, MICH., CLEVELAND, OHIO, PITTSBURGH, PA., PHILADELPHIA, PA., NEW YORK, N.Y., BALTIMORE, MD., WASHINGTON, D.C., SAN FRANCISCO, CALIF., LOS ANGELES, CALIF., SEATTLE, WASH., PORTLAND, ORE., SPOKANE, IDAHO, BUTTE, MONT., SALT LAKE CITY, UTAH, DENVER, COLO., KANSAS CITY, MO., ST. LOUIS, MO., CHICAGO, ILL., DETROIT, MICH., CLEVELAND, OHIO, PITTSBURGH, PA., PHILADELPHIA, PA., NEW YORK, N.Y., BALTIMORE, MD., WASHINGTON, D.C., SAN FRANCISCO, CALIF., LOS ANGELES, CALIF., SEATTLE, WASH., PORTLAND, ORE., SPOKANE, IDAHO, BUTTE, MONT., SALT LAKE CITY, UTAH, DENVER, COLO., KANSAS CITY, MO., ST. LOUIS, MO., CHICAGO, ILL., DETROIT, MICH., CLEVELAND, OHIO, PITTSBURGH, PA., PHILADELPHIA, PA., NEW YORK, N.Y., BALTIMORE, MD., WASHINGTON, D.C., SAN FRANCISCO, CALIF., LOS ANGELES, CALIF., SEATTLE, WASH., PORTLAND, ORE., SPOKANE, IDAHO, BUTTE, MONT., SALT LAKE CITY, UTAH, DENVER, COLO., KANSAS CITY, MO., ST. LOUIS, MO., CHICAGO, ILL., DETROIT, MICH., CLEVELAND, OHIO, PITTSBURGH, PA., PHILADELPHIA, PA., NEW YORK, N.Y., BALTIMORE, MD., WASHINGTON, D.C., SAN FRANCISCO, CALIF., LOS ANGELES, CALIF., SEATTLE, WASH., PORTLAND, ORE., SPOKANE, IDAHO, BUTTE, MONT., SALT LAKE CITY, UTAH, DENVER, COLO., KANSAS CITY, MO., ST. LOUIS, MO., CHICAGO, ILL., DETROIT, MICH., CLEVELAND, OHIO, PITTSBURGH, PA., PHILADELPHIA, PA., NEW YORK, N.Y., BALTIMORE, MD., WASHINGTON, D.C., SAN FRANCISCO, CALIF., LOS ANGELES, CALIF., SEATTLE, WASH., PORTLAND, ORE., SPOKANE, IDAHO, BUTTE, MONT., SALT LAKE CITY, UTAH, DENVER, COLO., KANSAS CITY, MO., ST. LOUIS, MO., CHICAGO, ILL., DETROIT, MICH., CLEVELAND, OHIO, PITTSBURGH, PA., PHILADELPHIA, PA., NEW YORK, N.Y., BALTIMORE, MD., WASHINGTON, D.C., SAN FRANCISCO, CALIF., LOS ANGELES, CALIF., SEATTLE, WASH., PORTLAND, ORE., SPOKANE, IDAHO, BUTTE, MONT., SALT LAKE CITY, UTAH, DENVER, COLO., KANSAS CITY, MO., ST. LOUIS, MO., CHICAGO, ILL., DETROIT, MICH., CLEVELAND, OHIO, PITTSBURGH, PA., PHILADELPHIA, PA., NEW YORK, N.Y., BALTIMORE, MD., WASHINGTON, D.C., SAN FRANCISCO, CALIF., LOS ANGELES, CALIF., SEATTLE, WASH., PORTLAND, ORE., SPOKANE, IDAHO, BUTTE, MONT., SALT LAKE CITY, UTAH, DENVER, COLO., KANSAS CITY, MO., ST. LOUIS, MO., CHICAGO, ILL., DETROIT, MICH., CLEVELAND, OHIO, PITTSBURGH, PA., PHILADELPHIA, PA., NEW YORK, N.Y., BALTIMORE, MD., WASHINGTON, D.C., SAN FRANCISCO, CALIF., LOS ANGELES, CALIF., SEATTLE, WASH., PORTLAND, ORE., SPOKANE, IDAHO, BUTTE, MONT., SALT LAKE CITY, UTAH, DENVER, COLO., KANSAS CITY, MO., ST. LOUIS, MO., CHICAGO, ILL., DETROIT, MICH., CLEVELAND, OHIO, PITTSBURGH, PA., PHILADELPHIA, PA., NEW YORK, N.Y., BALTIMORE, MD., WASHINGTON, D.C., SAN FRANCISCO, CALIF., LOS ANGELES, CALIF., SEATTLE, WASH., PORTLAND, ORE., SPOKANE, IDAHO, BUTTE, MONT., SALT LAKE CITY, UTAH, DENVER, COLO., KANSAS CITY, MO., ST. LOUIS, MO., CHICAGO, ILL., DETROIT, MICH., CLEVELAND, OHIO, PITTSBURGH, PA., PHILADELPHIA, PA., NEW YORK, N.Y., BALTIMORE, MD., WASHINGTON, D.C., SAN FRANCISCO, CALIF., LOS ANGELES, CALIF., SEATTLE, WASH., PORTLAND, ORE., SPOKANE, IDAHO, BUTTE, MONT., SALT LAKE CITY, UTAH, DENVER, COLO., KANSAS CITY, MO., ST. LOUIS, MO., CHICAGO, ILL., DETROIT, MICH., CLEVELAND, OHIO, PITTSBURGH, PA., PHILADELPHIA, PA., NEW YORK, N.Y., BALTIMORE, MD., WASHINGTON, D.C., SAN FRANCISCO, CALIF., LOS ANGELES, CALIF., SEATTLE, WASH., PORTLAND, ORE., SPOKANE, IDAHO, BUTTE, MONT., SALT LAKE CITY, UTAH, DENVER, COLO., KANSAS CITY, MO., ST. LOUIS, MO., CHICAGO, ILL., DETROIT, MICH., CLEVELAND, OHIO, PITTSBURGH, PA., PHILADELPHIA, PA., NEW YORK, N.Y., BALTIMORE, MD., WASHINGTON, D.C., SAN FRANCISCO, CALIF., LOS ANGELES, CALIF., SEATTLE, WASH., PORTLAND, ORE., SPOKANE, IDAHO, BUTTE, MONT., SALT LAKE CITY, UTAH, DENVER, COLO., KANSAS CITY, MO., ST. LOUIS, MO., CHICAGO, ILL., DETROIT, MICH., CLEVELAND, OHIO, PITTSBURGH, PA., PHILADELPHIA, PA., NEW YORK, N.Y., BALTIMORE, MD., WASHINGTON, D.C., SAN FRANCISCO, CALIF., LOS ANGELES, CALIF., SEATTLE, WASH., PORTLAND, ORE., SPOKANE, IDAHO, BUTTE, MONT., SALT LAKE CITY, UTAH, DENVER, COLO., KANSAS CITY, MO., ST. LOUIS, MO., CHICAGO, ILL., DETROIT, MICH., CLEVELAND, OHIO, PITTSBURGH, PA., PHILADELPHIA, PA., NEW YORK, N.Y., BALTIMORE, MD., WASHINGTON, D.C., SAN FRANCISCO, CALIF., LOS ANGELES, CALIF., SEATTLE, WASH., PORTLAND, ORE., SPOKANE, IDAHO, BUTTE, MONT., SALT LAKE CITY, UTAH, DENVER, COLO., KANSAS CITY, MO., ST. LOUIS, MO., CHICAGO, ILL., DETROIT, MICH., CLEVELAND, OHIO, PITTSBURGH, PA., PHILADELPHIA, PA., NEW YORK, N.Y., BALTIMORE, MD., WASHINGTON, D.C., SAN FRANCISCO, CALIF., LOS ANGELES, CALIF., SEATTLE, WASH., PORTLAND, ORE., SPOKANE, IDAHO, BUTTE, MONT., SALT LAKE CITY, UTAH, DENVER, COLO., KANSAS CITY, MO., ST. LOUIS, MO., CHICAGO, ILL., DETROIT, MICH., CLEVELAND, OHIO, PITTSBURGH, PA., PHILADELPHIA, PA., NEW YORK, N.Y., BALTIMORE, MD., WASHINGTON, D.C., SAN FRANCISCO, CALIF., LOS ANGELES, CALIF., SEATTLE, WASH., PORTLAND, ORE., SPOKANE, IDAHO, BUTTE, MONT., SALT LAKE CITY, UTAH, DENVER, COLO., KANSAS CITY, MO., ST. LOUIS, MO., CHICAGO, ILL., DETROIT, MICH., CLEVELAND, OHIO, PITTSBURGH, PA., PHILADELPHIA, PA., NEW YORK, N.Y., BALTIMORE, MD., WASHINGTON, D.C., SAN FRANCISCO, CALIF., LOS ANGELES, CALIF., SEATTLE, WASH., PORTLAND, ORE., SPOKANE, IDAHO, BUTTE, MONT., SALT LAKE CITY, UTAH, DENVER, COLO., KANSAS CITY, MO., ST. LOUIS, MO., CHICAGO, ILL., DETROIT, MICH., CLEVELAND, OHIO, PITTSBURGH, PA., PHILADELPHIA, PA., NEW YORK, N.Y., BALTIMORE, MD., WASHINGTON, D.C., SAN FRANCISCO, CALIF., LOS ANGELES, CALIF., SEATTLE, WASH., PORTLAND, ORE., SPOKANE, IDAHO, BUTTE, MONT., SALT LAKE CITY, UTAH, DENVER, COLO., KANSAS CITY, MO., ST. LOUIS, MO., CHICAGO, ILL., DETROIT, MICH., CLEVELAND, OHIO, PITTSBURGH, PA., PHILADELPHIA, PA., NEW YORK, N.Y., BALTIMORE, MD., WASHINGTON, D.C., SAN FRANCISCO, CALIF., LOS ANGELES, CALIF., SEATTLE, WASH., PORTLAND, ORE., SPOKANE, IDAHO, BUTTE, MONT., SALT LAKE CITY, UTAH, DENVER, COLO., KANSAS CITY, MO., ST. LOUIS, MO., CHICAGO, ILL., DETROIT, MICH., CLEVELAND, OHIO, PITTSBURGH, PA., PHILADELPHIA, PA., NEW YORK, N.Y., BALTIMORE, MD., WASHINGTON, D.C., SAN FRANCISCO, CALIF., LOS ANGELES, CALIF., SEATTLE, WASH., PORTLAND, ORE., SPOKANE, IDAHO, BUTTE, MONT., SALT LAKE CITY, UTAH, DENVER, COLO., KANSAS CITY, MO., ST. LOUIS, MO., CHICAGO, ILL., DETROIT, MICH., CLEVELAND, OHIO, PITTSBURGH, PA., PHILADELPHIA, PA., NEW YORK, N.Y., BALTIMORE, MD., WASHINGTON, D.C., SAN FRANCISCO, CALIF., LOS ANGELES, CALIF., SEATTLE, WASH., PORTLAND, ORE., SPOKANE, IDAHO, BUTTE, MONT., SALT LAKE CITY, UTAH, DENVER, COLO., KANSAS CITY, MO., ST. LOUIS, MO., CHICAGO, ILL., DETROIT, MICH., CLEVELAND, OHIO, PITTSBURGH, PA., PHILADELPHIA, PA., NEW YORK, N.Y., BALTIMORE, MD., WASHINGTON, D.C., SAN FRANCISCO, CALIF., LOS ANGELES, CALIF., SEATTLE, WASH., PORTLAND, ORE., SPOKANE, IDAHO, BUTTE, MONT., SALT LAKE CITY, UTAH, DENVER, COLO., KANSAS CITY, MO., ST. LOUIS, MO., CHICAGO, ILL., DETROIT, MICH., CLEVELAND, OHIO, PITTSBURGH, PA., PHILADELPHIA, PA., NEW YORK, N.Y., BALTIMORE, MD., WASHINGTON, D.C., SAN FRANCISCO, CALIF., LOS ANGELES, CALIF., SEATTLE, WASH., PORTLAND, ORE., SPOKANE, IDAHO, BUTTE, MONT., SALT LAKE CITY, UTAH, DENVER, COLO., KANSAS CITY, MO., ST. LOUIS, MO., CHICAGO, ILL., DETROIT, MICH., CLEVELAND, OHIO, PITTSBURGH, PA., PHILADELPHIA, PA., NEW YORK, N.Y., BALTIMORE, MD., WASHINGTON, D.C., SAN FRANCISCO, CALIF., LOS ANGELES, CALIF., SEATTLE, WASH., PORTLAND, ORE., SPOKANE, IDAHO, BUTTE, MONT., SALT LAKE CITY, UTAH, DENVER, COLO., KANSAS CITY, MO., ST. LOUIS, MO., CHICAGO, ILL., DETROIT, MICH., CLEVELAND, OHIO, PITTSBURGH, PA., PHILADELPHIA, PA., NEW YORK, N.Y., BALTIMORE, MD., WASHINGTON, D.C., SAN FRANCISCO, CALIF., LOS ANGELES, CALIF., SEATTLE, WASH., PORTLAND, ORE., SPOKANE, IDAHO, BUTTE, MONT., SALT LAKE CITY, UTAH, DENVER, COLO., KANSAS CITY, MO., ST. LOUIS, MO., CHICAGO, ILL., DETROIT, MICH., CLEVELAND, OHIO, PITTSBURGH, PA., PHILADELPHIA, PA., NEW YORK, N.Y., BALTIMORE, MD., WASHINGTON, D.C., SAN FRANCISCO, CALIF., LOS ANGELES, CALIF., SEATTLE, WASH., PORTLAND, ORE., SPOKANE, IDAHO, BUTTE, MONT., SALT LAKE CITY, UTAH, DENVER, COLO., KANSAS CITY, MO., ST. LOUIS, MO., CHICAGO, ILL., DETROIT, MICH., CLEVELAND, OHIO, PITTSBURGH, PA., PHILADELPHIA, PA., NEW YORK, N.Y., BALTIMORE, MD., WASHINGTON, D.C., SAN FRANCISCO, CALIF., LOS ANGELES, CALIF., SEATTLE, WASH., PORTLAND, ORE., SPOKANE, IDAHO, BUTTE, MONT., SALT LAKE CITY, UTAH, DENVER, COLO., KANSAS CITY, MO., ST. LOUIS, MO., CHICAGO, ILL., DETROIT, MICH., CLEVELAND, OHIO, PITTSBURGH, PA., PHILADELPHIA, PA., NEW YORK, N.Y., BALTIMORE, MD., WASHINGTON, D.C., SAN FRANCISCO, CALIF., LOS ANGELES, CALIF., SEATTLE, WASH., PORTLAND, ORE., SPOKANE, IDAHO, BUTTE, MONT., SALT LAKE CITY, UTAH, DENVER, COLO., KANSAS CITY, MO., ST. LOUIS, MO., CHICAGO, ILL., DETROIT, MICH., CLEVELAND, OHIO, PITTSBURGH, PA., PHILADELPHIA, PA., NEW YORK, N.Y., BALTIMORE, MD., WASHINGTON, D.C., SAN FRANCISCO, CALIF., LOS ANGELES, CALIF., SEATTLE, WASH., PORTLAND, ORE., SPOKANE, IDAHO, BUTTE, MONT., SALT LAKE CITY, UTAH, DENVER, COLO., KANSAS CITY, MO., ST. LOUIS, MO., CHICAGO, ILL., DETROIT, MICH., CLEVELAND, OHIO, PITTSBURGH, PA., PHILADELPHIA, PA., NEW YORK, N.Y., BALTIMORE, MD., WASHINGTON, D.C., SAN FRANCISCO, CALIF., LOS ANGELES, CALIF., SEATTLE, WASH., PORTLAND, ORE., SPOKANE, IDAHO, BUTTE, MONT., SALT LAKE CITY, UTAH, DENVER, COLO., KANSAS CITY, MO., ST. LOUIS, MO., CHICAGO, ILL., DETROIT, MICH., CLEVELAND, OHIO, PITTSBURGH, PA., PHILADELPHIA, PA., NEW YORK, N.Y., BALTIMORE, MD., WASHINGTON, D.C., SAN FRANCISCO, CALIF., LOS ANGELES, CALIF., SEATTLE, WASH., PORTLAND, ORE., SPOKANE, IDAHO, BUTTE, MONT., SALT LAKE CITY, UTAH, DENVER, COLO., KANSAS CITY, MO., ST. LOUIS, MO., CHICAGO, ILL., DETROIT, MICH., CLEVELAND, OHIO, PITTSBURGH, PA., PHILADELPHIA, PA., NEW YORK, N.Y., BALTIMORE, MD., WASHINGTON, D.C., SAN FRANCISCO, CALIF., LOS ANGELES, CALIF., SEATTLE, WASH., PORTLAND, ORE., SPOKANE, IDAHO, BUTTE, MONT., SALT LAKE CITY, UTAH, DENVER, COLO., KANSAS CITY, MO., ST. LOUIS, MO., CHICAGO, ILL., DETROIT, MICH., CLEVELAND, OHIO, PITTSBURGH, PA., PHILADELPHIA, PA., NEW YORK, N.Y., BALTIMORE, MD., WASHINGTON, D.C., SAN FRANCISCO, CALIF., LOS ANGELES, CALIF., SEATTLE, WASH., PORTLAND, ORE., SPOKANE, IDAHO, BUTTE, MONT., SALT LAKE CITY, UTAH, DENVER, COLO., KANSAS CITY, MO., ST. LOUIS, MO., CHICAGO, ILL., DETROIT, MICH., CLEVELAND, OHIO, PITTSBURGH, PA., PHILADE