



MAPLES PLAY MT. CLEMENS

Team Prepared For One Of Hardest Battles Of Gridiron Season

Birmingham leaves today at two o'clock for Mt. Clemens to play one of the hardest battles on the gridiron this season with the Mt. Clemens Bathers on the Mt. Clemens field.

Every year Birmingham looks forward to this game next to the Thanksgiving game with Royal Oak, as the outstanding game on its schedule because Mt. Clemens is a difficult team to defeat.

Ernest Buckhold, coach of the Mt. Clemens team for the past

three seasons, is getting his team well in shape to meet Birmingham.

This season Mt. Clemens has done better than Birmingham with wins and losses, having won over Wyandotte, Monroe, Fordson and Hazel Park, losing to Port Huron, Grosse Pointe, and Royal Oak.

The captain of the Mt. Clemens team is Clyde Gatzke playing center. Andrew Donaldson is the high scorer of the Mt. Clemens team although it is doubtful that he will be able to play because of injuries received in a previous game.

The probable starting lineup for Mt. Clemens will be: Clyde Gatzke, center; Ted Berger, guard; George Steek, guard; Joseph Strayham, tackle; Nathan Lipvin, tackle; Edward Wadell, end; Bernard Roskopf, end; William Daner, quarterback; Jack Matigan, fullback; David Mill, halfback, and Odner Stevens, halfback.

Good substitutes for Mt. Clemens are George Rogers, guard; George Bannow, tackle; John Palmer, fullback, and Joseph Kling, quarterback.

SPORTS NEWS and EVENTS

BALDWIN HI-LIGHTS

By Ann Nonhous
Listen my people and you shall hear
Of a super dance to come off round here.

Namely, the annual football dance. Take it from me it's going to be one smooth affair. The formula goes something like this: Time, 9 till 12, Nov. 19th. Place: Baldwin Gym.

Characters: All the football players plus dates and all you other guys and gals and that means ALL. Practically everyone is doing something towards making it a smash hit. Backed by the Student Congress, it's headed by Dorothy Trump and Frankie Chandler, who are whipping things into shape. Dave McKinney is taking care of the advertising side and Gini Barden has been running around with piles of notes and ideas. The decorations are really going to be something to converse about. The art class is joining up on that. However, it's all wound up to come out with a most successful dance and worth it all. Now all you guys scurry up and get a date quick like and plan to come around in a bunch.

P.S. Just heard that the orchestra this year will outshine them all and that means plenty.

Yup, here we are right back up to the old Community House again on Saturday night, but after all, there's no place quite like it to exercise the constitution. No, I'm not going to say they turned out in bunches; this time it was in truckloads (no pun intended). Mary Anne Xeff came along with Dave Thompson and Nancy Fisher ambled in with Jim Lawler. Frank McCarthy brought Marilyn

Prussing, who looked de-velvly in a right fine mood, especially Bill Vinton, Art Jones, Bob Myers, Lew Gillette, and Dick Smith, who were cutting in right and left.

Between dances there was a regular stampede for the most popular spot in the house, the drinking fountain. Helen Ann Riddell and Bill Pheat were out in the hall along with Marge Gardner and Gordon O'Kelley. Also noticed Louise Cobb and Fritz Adams with the same idea in mind.

Incidentally, a fond farewell to June Pointer, who left us all for Florida last Saturday. We all envy you down in the sunny south, Florida, but we miss you, too. So sorry.

Might as well be big hearted and wish you all a fond farewell, at least for this time anyway.

Annie.

LIBRARY CLUB TO GIVE TEA NOV. 15

In honor of "Book Week" a tea will be given for members of the high school faculty by the Library Club and the advanced foods class November 15 in the Baldwin High School library.

Committees have been chosen to plan the affair and they are as follows: Invitations, chairman, Annemarie Thrasher, Virginia Mays, Kathleen Wade and Ruth Stormer; Decorations, chairman, Ruth Heydon, Dorothy Maclean, Marion Noel and Sylvia Johnson. Eleanor Wood will be in charge of setting the tables and Mary Meredith in charge of the food. Tea will be served from 4:45 to 4:30.

Baldwin Coach And Team Watch Game Of Adversaries To Plan Workout For Squad

By Norman Lyle Jr.
The Baldwin High School football team definitely has its work cut out for it in its two closing games of the season. Members of the team attended practically en masse the game between Mt. Clemens and Royal Oak at Central Park last Friday, Nov. 5. Baldwin meets Mt. Clemens today at Mt. Clemens, and will meet Royal Oak on Thanksgiving Day at Royal Oak. What Baldwin Coach George Wurster and members of the team saw at last Friday's game served to schedule an intensive workout for the squad during the past week which will intensify during the next two weeks.

Royal Oak defeated Mt. Clemens by a score of 7-6. The two teams, both representing Class A schools, were evenly matched as the score indicates. Royal Oak's margin of victory was the uncanny passing and elusive running of Bud Chamberlain, Aeger right halfback, and All State man.

Chamberlain is one of the best high school backs this writer has ever seen. In the game with Royal Oak last year he defeated Birmingham almost single-handed. And judging by his performance last week, he is even better than ever. His passing was nothing short of phenomenal. Each time he faded back, his pass was within reach of the intended receiver. Chamberlain threw 13 passes and completed six of them. Royal Oak scored four first downs and a touchdown—the winning touchdown—by virtue of Chamberlain's right arm.

Chamberlain was just as effective carrying the ball. His best runs were made around his own right end. A fast man, he is very hard to stop completely. Although he is not a particularly big man, he apparently slowed him up and stopped him numerous times when he carried the ball, he broke away from his would-be tacklers each time. Chamberlain also did his team's punting and performed very creditably in this department. All in all, if Birmingham is to beat Royal Oak on Thanksgiving Day, one Bud Chamberlain, right halfback extraordinary, must be stopped.

The Royal Oak line appeared rather green. At times it opened wide holes for the Aton backs. But on the defense it was almost helpless before the giant Mt. Clemens line. Only when backed up to its very goal line did it stir and fight appreciably. In the second half, Mt. Clemens charged up and

down the field and scored one touchdown, but its own families and Chamberlain's ball-carrying offset the ground gained by rushing.

Mt. Clemens, on the other hand, had a well-balanced backfield and a huge line. Andy Donaldson was the father's stand-out player. Donaldson did most of the ball carrying, all of the punting, and scored Mt. Clemens' only touchdown. Malign and Mial assisted him ably both on the offense and defense. Malign is a hard plunger and a fast charger. Mial, a colored boy, is an elusive runner and a fair passer. On paper, Mt. Clemens' passers are rated favorably over Baldwin's attack compared favorably with Royal Oak's, but in reality it did not. Mt. Clemens threw five passes and completed four of them. Mt. Clemens' best pass was a spot pass just over right end with Donaldson usually on the receiving end. On the other hand, Royal Oak's most effective pass play was a pass down the center alley, usually to Shaw.

Mt. Clemens made use of an unbalanced line on the offense. Its most effective running play was a slash off tackle, with any of its four backs—Donaldson, Malign, Mial, or Palmer, another colored boy and a hard charger, carrying the ball. Mt. Clemens tried the sleeper play just after receiving the kickoff in the second half. It was unsuccessful.

The Mt. Clemens line is big from end to end, especially the right side. Roskopf, Bathers' right end, is a hard man to fool, and his end was seldom turned. Chamberlain broke loose around Wardell's left end. Mt. Clemens' play broke down on the upfield and fouling most of the afternoon. Two Royal Oak players were expelled from the game for fighting, but the causes can be traced back to unnecessary roughness on the part of both teams.

Both teams gave a good account of themselves in this game and Birmingham will have to be at its best to defeat these teams when it meets them. If Birmingham can stop Royal Oak's passing attack and Mt. Clemens' running attack, it can beat these teams.

The Mt. Clemens-Royal Oak starting lineups:
Royal Oak: Wardell, I.E.; Taylor, Loeper, L.T.; Land, Rodgers, L.C.; Law, Gottleke, C.; Albrecht, Bannow, R.G.; Seeman, Strayham, M.T.; Anderson, Roskopf, R.E.; Ladue, Daner, Q.B.; Webb, Mays, M.C.; Shaw, Palmer, R.H.; Chamberlain, Palmer, F.B.; Giddings

Norman Lyle Second In Oberlin Contest

Norman Lyle, president of the Senior class and editor of this season's Football Program, was named alternate for a scholarship in English from Oberlin College.

Sports Showup

By Norman Lyle, Jr.
Delayed greetings and salutations to the football team's newest sweatshirt—Sandra Gail Wurster! Just two weeks old tomorrow, Coach E. E. Raymond, in an attempt to finish the season on a note of victory, will enter the eleven that found victory easy last week, Harold Miller, starboard of the attack, will be in his familiar berth at fullback. Duane Crosswhite, quarterback, and Dick Morgan, end, the Cranbrook point-guards, last Saturday, are expected to give the Hoosiers trouble.

The Line-up
Dick Morgan, L. E.; William MacLachlan, L. E.; Ed Leichen (Capt.), L. G.; Homer Pharis, C.; George Wolf, R. G.; Woodward, R. E.; Bradbury Hunter, R. E.; Duane Crosswhite, Q. B.; Dick Sagre, L. H.; Jack Pierce, R. H.; Harold Miller, F. B.

There's a real rivalry of long standing between Mt. Clemens and Birmingham. When these two teams meet at Mt. Clemens this afternoon, fans may look forward to a bitterly-contested game in which every inch of ground gained is dearly paid for.

Mt. Clemens was the other school involved in an unfortunate misunderstanding here in Birmingham last week of years ago. Fans of several members of the Birmingham team complained because of unnecessary roughness and foul play on the part of the Mt. Clemens team the previous week. A number of Birmingham boys to play against the Bathers the next year. This naturally led to much ill-feeling on the part of both schools.

Again, not so long ago Birmingham was the team that broke a long Mt. Clemens victory streak. The result of these incidents is that Mt. Clemens takes a particular delight in beating Birmingham and points for this game. It is up to the local boys to see to it that Mt. Clemens has no cause for painting the town red tonight.

The possibility of several Birmingham boys being listed as members of the United States Olympic track team in 1940 is not as remote as it seems at first glance.

Birmingham has sent a number of fine track men to the University of Michigan and elsewhere. Tom Ellerly graduated from Baldwin to captain of the Michigan track team. Rod Cox threw the hammer for Coach Charlie Hoyt's aggregation, Clayton Bradford was certainly Olympic material in 1936, and but for the fact that he was way off his way through school, ought to have been one of the country's outstanding distance men. Bill Lynch, of Cranbrook, Baldwin and Princeton, is national intercollegiate champion hammer thrower. Bud Herbst was one of the track team's star performers last year. There is every possibility that along about 1940 some member or members of this year's Baldwin track team will represent Uncle Sam abroad on the cinder track.

CRANBROOK-HOWE GAME TO END YEAR

Combat Will Continue Old Gridiron Rivalry Dating Back To 1930

Cranbrook School, fresh from a three-touchdown victory against Napolean High School, will end its 1937 grid season Saturday against Howe (Hills) Academy at the Bloomfield Hills field. The game this week-end will be the continuation of Cranbrook's longest and most intense rivalry. Beginning with the first game between the schools in 1930, when the Indiana team won 40 to 0, Cranbrook and Howe have met seven times, the former winning four to the latter's two. Cumulative scores of the games, however, indicate a balancing of power between the two. Cranbrook amassing 80 points to Cranbrook's 62 since the beginning of the school competition.

But team rivalry does not offer the only incentive for the Cranbrook boys. Beyond the \$14 to 13 defeat at the hands of a hard-driving Lake Forest team, the varsity regard against prep schools is clean. Combining an aim to let this record go no matter with a desire to vindicate the Lake Forest loss, the Michigan boys will be out to win.

Coach E. E. Raymond, in an attempt to finish the season on a note of victory, will enter the eleven that found victory easy last week. Harold Miller, starboard of the attack, will be in his familiar berth at fullback. Duane Crosswhite, quarterback, and Dick Morgan, end, the Cranbrook point-guards, last Saturday, are expected to give the Hoosiers trouble.

The Line-up
Dick Morgan, L. E.; William MacLachlan, L. E.; Ed Leichen (Capt.), L. G.; Homer Pharis, C.; George Wolf, R. G.; Woodward, R. E.; Bradbury Hunter, R. E.; Duane Crosswhite, Q. B.; Dick Sagre, L. H.; Jack Pierce, R. H.; Harold Miller, F. B.

Baldwin Clubs Off To Excellent Start

The clubs at Baldwin High School are just getting started in what promises to be an eventful season. The variety of clubs is greater this year and the school spirit is more pronounced. Hence, the activities are well supported.

Several of the clubs have planned for "doing outside of the club time. The Dramatics club is giving an Armistice play soon and the Recreation Club, composed of about 20 girls, is scheduled to give a Hayride this Friday.

The Science Club contemplates showing movies from time to time at which only members will be admitted free of charge. There is a lot of confidential chattering going on at the Kait, Sew and Chatter Club, while a tea is being planned for by the Library club on Monday, November 15.

The Archery club has engaged in some practice at shooting and is now busy making bow strings. A few plays will be given in Spanish dialogue by the Spanish club while the Aeronautics club is working on the theory of flight. The checker club, with about 30 members, is learning to play the game as each one plays both sides of the board.

SPANISH CLUB WILL GIVE ONE-ACT PLAY
The Spanish Club under the direction of Mr. Ramon Mercado will put on a play in room 230, next Tuesday morning during activity period.

The play given entirely in Spanish, will be a one-act, two-scene thriller entitled, "The First Die-puck". The characters will be Jeanette Sadler, Carolyn Demman, and Bob Gees.

HIGH SCHOOL and COLLEGE GRADUATES

who are interested in the better opportunities which business offers, should investigate the courses offered in both the Day and Evening Classes. Your future depends in a large degree upon your education and training.



DETROIT 1316 Fl. Mich. Bldg. 1849 Jay Road 2546 Grand St.
PONTIAC 7 West Lawrence St.
SACINAW Board of Com. maceo Bldg.

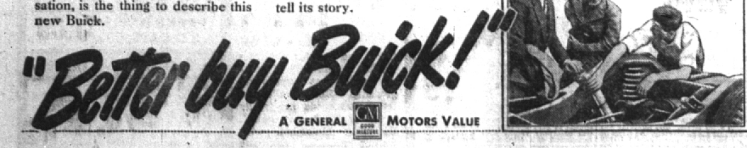


Meaning—the Most Modern Automobile in the World is the new 1938 Buick—with DYNAFASH ENGINE and TORQUE-FREE SPRINGING

IF YOU'VE put a sparkling 1938 Buick through its thrilling paces—And tried to say in words what this stand-out car's got—And found to your surprise you couldn't begin to do it justice—Listen, don't think you're the only one!

"It's gotta lotta ummph!" say trier-outers vainly trying to express all the marvelous things they've felt. "Ummph!" meaning zip—flash—power. "Ummph!" meaning all you ever expected to find in a car—and a great deal else in addition!

Fact is—demonstration, not conversation, is the thing to describe this new Buick.



"Better Buy Buick!" A GENERAL MOTORS VALUE

Sumner Motor Sales, Inc. 464 S. WOODWARD AVE.

Warm, Swanky Overcoats

\$22.50 to \$35.00

- Double Breasted
- Raglan and Set-in Sleeves
- Patterns and Solids

Popular priced coats... very reasonable for such well tailored garments. An ample variety of fabrics and styles to select from.

SEE AMERICA'S MOST POPULAR Topcoats and Overcoats

THE HUDDER... by Society Brand Of 18 oz. all wool material which is light as a feather, yet keeps out wind and cold in a surprising manner. Sheds water like a duck's back. Several styles and colors to select from. A coat for a year's round wear. Priced at \$45.

THE HUDDERFORD... by Society Brand Exceptional warmth with a minimum of weight, is what makes this coat outstanding. Of 28 oz. fine quality wool, it will keep out winter's coldest blasts. Smartly styled, well tailored, comes in solid colors and patterns. Will give warmth, style and that "well dressed" appearance. Priced at \$50.

LADIES' HUDDER... by Society Brand Many women are turning to this famous maker for their Fall and Winter coats. Correct styling... Warm and Serviceable... they're gaining in popularity by leaps and bounds. Priced at \$49.75.

PECK'S MEN'S WEAR TAILORING S. Woodward near Maple

ALL PAVED ROUTES LOW ROAD TRIP RATES

Make Your Holiday Travel Dollar Work

Many people who visit friends or relatives during the winter holidays prefer to go by Blue Goose bus.

Dollars spent for Blue Goose transportation buy comfort as well as carefree, restful transportation. Traffic worry and driving fatigue are eliminated.

391 S. WOODWARD PHONE 348 THE FINEST TRANSPORTATION BLUE GOOSE LINES OVER MICHIGAN'S SCENIC HIGHWAYS