

People will not look forward to posterity who never look backward to their ancestors—Reflections.

SIXTIETH YEAR—NO. 13

Suburban Homesites 108 x 135

All Improvements In — Ready to Build
Your Choice — \$800

New Homes In Quarton District

3 Bedroom — 1 Bathroom
4 Bedroom — 2 Bathrooms
Insulated, air conditioned, with oil heat.
Spacious grounds.
Very attractively priced.

BROADFIELD ORGANIZATION, INC.

1711 W. MAPLE PHONE SEVEN-ELEVEN

READY TO REMODEL...

The beautiful 3/4 acre setting of this unusual home cannot be duplicated. Age old oaks and elms surround the house and shade the meadow below and its winding stream.

The house needs but little to make it most attractive. The 1 1/2 story living room, large dining room and sun room are well planned—the four bedrooms and bath need only minor changes. It's already completely modern—no major expense is necessary.

Call

MAX BROOK INC.

ESTABLISHED 1895

1728 W. MAPLE ROAD BIRMINGHAM 1212 3087 W. GRAND BLVD. MADISON 8782

BEVERLY HILLS

Just South of B'ham Golf Club
Buy and build in this restricted home community
Low taxes — Choice sites
\$750 to \$2200

25% discount for cash. F. H. A. Approval

Call Mr. Springer week days—Call 1264
On property Sundays from 11 to 5

KNIGHT-MENARD CO.

800 UNITED ARTISTS BLDG.—DETROIT

HOUSE PROBLEM

To Rent

or

To Buy

LET US HELP YOU—we have offerings in Birmingham and Bloomfield—also some farms.

Always Consult

Walsh, James & Wasey Co.

DETROIT, BIRMINGHAM, BLOOMFIELD HILLS, LANSING, NORTH MIAMI BEACH, NEW PLYMOUTH, OHIO, WASHINGTON, D. C.

431 S. WOODWARD AVE. BIRMINGHAM 1250

BUNGALOW

5 Room Bungalow. Large lot beautifully landscaped—Northwest section, near Catholic Church—\$4500—\$900 Down.

INCOME BUNGALOW

INCOME BUNGALOW—6 and 5 Rooms—Electric Refrigeration, Cabinet Stoves, Garage, Present Income—\$105 per Month. Sacrifice \$8500—\$1200 Down.

BALL-STODDARD COMPANY REALTORS

PHONE BIRMINGHAM 2456 227 S. WOODWARD AVE. BIRMINGHAM, MICH.

EXHIBIT RARE GLASS PIECES

Library's Museum Display Loaned By Saginaw Collector

The possibilities of the Baldwin Library as a small museum are still to be exploited to the full. Much interest has been evinced in the new museum case and the exhibits it contains, but few people realize how much can be put into the two glass wall cases in the alcove to the left of the main doors.

In conjunction with two of the library's hobby books, an unusual display of rare glass has been occupying one of the cases. The books, "Old Glass, European and American" by N. Hudson Moore and "Mary Herrod—Northend"—"American Glass," are on loan to the library from the collection of Mr. Schuch's collection, numbering over 50,000 pieces, is widely recognized by museums as well as the Library of Congress, for he also owns many rare books and manuscripts. He has agreed to loan more articles from time to time, and lovers of the rare and antique would do well to see each exhibit.

The most imposing piece in the present exhibit is the amber-colored figure of a female Indian in ceremonial costume. Over a foot in height, the figure was once a bottle filled with "Indian Bitters," an old patent medicine which sold for around \$10. Now such containers are sought after by collectors all over the country.

Two Venetian hand-blown crucets, of clear glass and lovely flowing lines are in the case. Though very old and fragile they have been so carefully preserved that they are as perfect as the day they were first blown. Also in the line of domestic ware is an early American salt and pepper shaker set, of clear olive-green glass. Even with much larger holes in to cover than are seen nowadays, the salt collar just often have become clogged, for it is equipped with a muddler, attached to the lid to break up the coarse salt in use at that time.

From Bristol, England, comes a quaint old hand-made "friendship cup," of oyster white china. Still faintly discernible on the side of the cup, amidst the usual profusion of vines, are the words "Remember me," in gold letters. Another bit of English glass, from Sandringham, is a delightfully modeled in opaque white glass. Resting on its chin, the amazing fish spirals up in a reverse S-curve, which ends with a two-tiered candle holder balanced on its tail.

An early American ink well, complete with a ghasant quill and a burning glass, carried in lieu of matches by the soldiers in the Civil War, complete the display.

URGENT ECONOMY
Berlin—In an effort to save paper, housewives have been ordered by the government to bring their own containers to stores for purchases such as sauerkraut, salads, pickles, etc. while shopkeepers are asked not to wrap canned goods, toothpaste, and the like, already enclosed in tubes or cardboard boxes.

CORYELL PARK
Distinctive Colonial home situated on a 1 1/2 acre, highly elevated site, beautifully landscaped. Four bedrooms, two baths. Priced below conventional quotations for immediate sale.

DORCHESTER ROAD
Large desirable homestead 80 x 140. Close to school. Best buy in town. \$1150 cash.

Phone 582 from 8 - 9 a. m. or between 6 - 7 p. m.

Rotary President

Maurice Dupuyres

Maurice Dupuyres, Paris, France, was elected president of Rotary International at the twenty-eighth annual convention at Nice, France, which closed June 11. Dupuyres, the first person to be elected to the presidency from Continental Europe, was president of the Paris club 1928-29.

He is a prominent manufacturer of France, has visited almost every country in Europe and has made many trips to North and South America and North Africa. In addition to French he speaks and corresponds fluently in English, Spanish, German and Italian. He plans to visit clubs in the United States, Canada, Newfoundland and Bermuda during his term as president of Rotary International.

He is a prominent manufacturer of France, has visited almost every country in Europe and has made many trips to North and South America and North Africa. In addition to French he speaks and corresponds fluently in English, Spanish, German and Italian. He plans to visit clubs in the United States, Canada, Newfoundland and Bermuda during his term as president of Rotary International.

MINUTE SERMON

By Dr. A. F. Johnson
First Baptist Church

Sunday is a holy day and not a holiday. It should be filled with good, not greed. The day should build faith and finances. Satan has tried to commercialize everything on Sunday, including the churches. "Remember the Sabbath day to keep it holy," is God's command.

SIX SETS OF TWINS
Putnam, Conn.—Mrs. Harry Field, of East Thompson, recently gave birth to a sixth set of twins in little more than ten years. The first set, a boy and a girl, were born on Jan. 16, 1926. In 1928 and 1929, twin girls were born, another mixed set in 1932, and twin boys in 1935. In addition to the twins, the Field's have had three other children. Two have died, but the twins remain.

For as little as 25 cents you may insert a CLASSIFIED AD in the columns of The Centric, 75¢ one when you want to or 1¢ if you call, locate a house or sell one or for hiring a maid. Telephone 111 before Wednesday noon each week. —(Adv.)



Earn a BETTER RETURN on your SAVINGS and let your SAVINGS WORK SAFELY

3%

Current Rate on Savings
Savings increased by the touch of the month over dividends from the first.

BIRMINGHAM FEDERAL SAVINGS AND LOAN ASSOCIATION

211 EAST MAPLE AVE.
Chartered and Supervised by U. S. Government

211 EAST MAPLE AVE.
Chartered and Supervised by U. S. Government

UNUSUAL OPPORTUNITY

To Rent Furnished Home

in beautiful location in Birmingham. . . . Owner's business has taken him out of the city and home can be rented furnished completely, or partly as tenant desires.

Shown by appointment only.
A real opportunity for a few months or a year lease.

Call us at once.

Colgrove-Klingensmith Inc.

139 W. Maple Birmingham
Phone 501

RADIO COVERS SCOUT AFFAIR

NBC Broadcasts Daily Round of Jamboree Life For 25,000 Youths

The most extensive radio coverage from the national capital since the President Roosevelt inaugural broadcasts last January will tell millions of parents, Boy Scouts and their friends throughout the world the daily story of the National Jamboree at Washington, D.C., from June 30th to July 25th, in which more than 25,000 American boys will take part.

The National Broadcasting Company will broadcast in a forty-foot circular tent at General Jamboree Headquarters within the shadow of the Washington Monument. This audio, radio executives said, will be as important as well equipped as many of the smaller stations on their networks.

At the height of operations between 50 and 100 radio engineers, announcers, production men and other experts will be on the job.

The "Jamboree City" of 350 acres on both sides of the historic Potomac River will have its broadcasting studios linked with the Washington master control and through that to the New York master control of both the National Broadcasting Company's, red and blue networks, totaling 120 stations.

F. D. R. To Review Scouts
President Roosevelt, active in the Scouting Movement for seventeen years and Honorary President of the organization since 1926, will review the 25,000 Boy Scouts while they are attending the Jamboree.

Plans call for Mr. Roosevelt to drive through that part of the 650-acre tented city that extends along the south bank of the Potomac River on Wednesday, July 7, accompanied by Jamboree camp chiefs. He has indicated that he will visit the Troop 1 Camp of the Scouts from Dutchess County, N. Y., his home county, and talk with his young neighbors.

On the same day the President will attend the all-star baseball game at Griffith Stadium, Washington, by 12 Eagle Scouts, one from each of the twelve Boy Scout Regions.

On July 9, President Roosevelt will review all the Scouts in a unique way—the "stationary parade." Instead of marching that the President for two or three miles in the vicinity.

The terrain is wooded, rolling and very picturesque, with winding roads and restful surroundings.

Sites are obtainable up to 1 and 86,100 acres for as low as \$1200 and favorable terms may be arranged.

EASY TO FINANCE!
We have many private mortgage plans in addition to F. H. A. government insured loans.



Every day marks a valuable increase in the worth of this property, which means that if you make an investment in Middlesex you will see a steady rise in its value and market price.

S. C. HADLEY REALTOR

Theatre Building
Phone 365

hours, the Scouts will stand still, in single columns on both sides of Constitution Avenue from the Capitol to the Lincoln Memorial. The President and other dignitaries will drive between the columns.

11 Local Scouts Attend
Headed by District Commissioner Carl Wood, of Bloomfield Hills, eleven local scouts are attending the encampment following a three-day training period at Camp Brady, near Waterford.

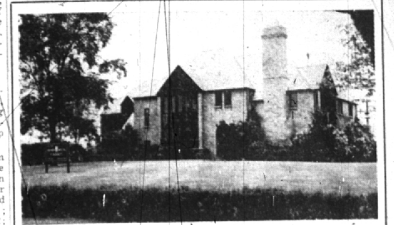
Included among the scouts from this vicinity are Earl Moody, Joe Stutte, and Andrew and Glen Watson from Troop B-4; Arthur Underwood, Dick Zantz and George Austin, from Troop B-5; Henry Dalquist, from Troop B-2; James Juhl, from Troop B-7; Herbert Tino represents Troop B-8; Francis Carveth, from Troop B-6 of Bloomfield Hills.

8 Children Escape Injury In Accident

Eight children, all under 15 years of age, narrowly escaped serious injury Monday afternoon when their car was in collision with a vehicle driven by C. F. Burkholder, of 1717 1/2 Ward Avenue, Detroit, at the intersection of Crooks Road and East Long Lake Road. Both cars were badly damaged.

According to sheriff's officers, Guido Rizzato, 15, of 391 South Boulevard, Pontiac, accompanied by his two sisters, three brothers and two other children, was driving East on Long Lake Road when Burkholder was going South on Crooks Road when the accident occurred. The children were taken to St. Joseph's Mercy Hospital for observation.

RESCUES CAT; JAIL SELF
Omaha, Neb.—Crawling through a narrow coal chute to his basement to rescue a cat, Sam Hayes, 62, found it impossible to get back through the chute, his only means of escape. He remained imprisoned for two hours before his shoats attracted children, who called police.



This Charming Bloomfield Home an Exceptional Buy

Situated on Barlen Road, Briarbank, just south of Bloomfield Hills Country Club and near Vaughan School. This delightful English brick residence has state roof, six bedrooms, four baths, splendid living quarters, over an acre of landscaped grounds.

This home can be purchased at a figure far below today's reproduction costs.



SNYDER, BUCK & BENNETT

WANT ADS COST LITTLE AND GET QUICK RESULTS

Statement of Condition as of June 30, 1937

ASSETS	
Cash on Hand and in Banks	\$ 696,174.00
United States Government Securities, and Securities Unconditionally guaranteed by the U. S. Government	296,579.00
Other Bonds	12,540,000.00
Railroad Bonds	275,132.46
Municipal Bonds	161,547.33
Industrial Bonds	39,240.00
Canadian Government and Foreign Bonds	24,501.90
Utilities—Operating	216,470.50
Loans and Discounts—Secured (Secured by Adequate Listed Collateral)	458,777.91
Loans and Discounts—Unsecured (To Birmingham Individuals, Business Enterprises, and Corporate Units of Oakland County)	40,228.85
Real Estate Mortgages (All on Birmingham and Community Improved Property)	390,630.15
Overdrafts	43.09
Federal Reserve Bank Stock	3,590.00
Furniture and Fixtures	106,610.20
Banking House	41,292.23
Accrued Interest on Bonds purchased	227.57
Premium Paid on Bonds Purchased	159.16
TOTAL ASSETS	\$2,127,551.50
LIABILITIES	
Capital—Common Capital Stock	\$22,000.00
Preferred Capital Stock	17,000.00
Surplus Fund	50,000.00
Undivided Profits—Net (Not Accrued)	41,068.56
Reserve for Taxes, Depreciation, and Interest on Savings	4,722.34
Reserve for Dividends Payable July 8, 1937	44,000.00
Dividends Unpaid	9.87
Other Liabilities (Federal Tax and Expense Checks Outstanding)	91.11
Deposits—U. S. Government and Other Public Deposits—Secured by pledges of U. S. Bonds and Other Securities	277,065.17
Other Deposits	19,992,582.80
Certified Checks, Cashier's Checks and Bank Money Orders Outstanding	21,050.72
	2,237,022.00
TOTAL LIABILITIES	\$2,127,551.50

N.B.—All Bonds are carried at cost, which is less than Market.
THE ABOVE STATEMENT IS CORRECT.
CHAS. E. JAMES, President.

DIRECTORS:
GEORGE R. AVERRE, CHAS. E. JAMES, ERNEST W. SEARLEM, H. E. EDWARDS, JOHN F. MARVIN, CHAS. F. JAMES, A. C. WELSH, JR.



The Birmingham National Bank

"Birmingham's Community Bank"
MEMBER FEDERAL RESERVE SYSTEM