

MANY APPEALING WAYS IN WHICH GREENS MAY BE SERVED

SYMPHONY OFFERS WAGNER PROGRAM

Symphony To Be Presented in Orchestra Hall Next Thursday

Featuring seven excerpts from the immortal music-dramas of Richard Wagner, the Detroit Symphony Orchestra, under the direction of Bernard Rothenberg, guest conductor from Rome, Italy, will play an all-Wagner program at the Thursday night concert of Jan. 14, in Orchestra Hall. The program will be the only one of its kind in Detroit this season.

Friday night, Jan. 15, the orchestra will be presented in concert on the Choral Union Series in Hill Auditorium, Ann Arbor. Molinari will conduct.

Saturday morning, Jan. 16, at 10:30 o'clock, the orchestra, under the direction of Victor Kolar, with Edith Brant as soloist, will give the first performance in the Young People's Series in Orchestra Hall. Feature of the program will be Oreste Flierer and her Concert Dance Group of 21 girls.

Gershwin Plays Jan. 20

With the composer present both as conductor and piano soloist, the Detroit Symphony orchestra will play an all-Gershwin program on Wednesday night, January 20, in Orchestra Hall. Among the works to be performed will be the internationally-known Rhapsody in Blue, the Jazz Concerto in F for Piano and Orchestra and the Piano and Bass Suite.

George Gershwin, who is credited with having achieved equal rank with the foremost contemporary American composers, will arrive in Detroit Monday, Jan. 15, by airplane from San Francisco.

Born in Brooklyn in 1898, Gershwin, until recently, had lived only in Brooklyn and Manhattan. He now lives in Beverly Hills, California, and holds important posts in Hollywood.

Gershwin's last appearance in Orchestra Hall, several years ago, proved a gala occasion. It was the one of the most talked-of performances of the season.

Tickets for the January 20 concert are now on sale both in Orchestra Hall and Grinnell's.

C. E. Society Plans Negro Spirituals

Ella Clark will conduct an appreciation hour of the negro in America at the Intermediate Christian Conference assembly Sunday afternoon at 4:30 o'clock in the Presbyterian Church. Negro spirituals will be featured. Pancakes will be served at the conclusion of the singing.

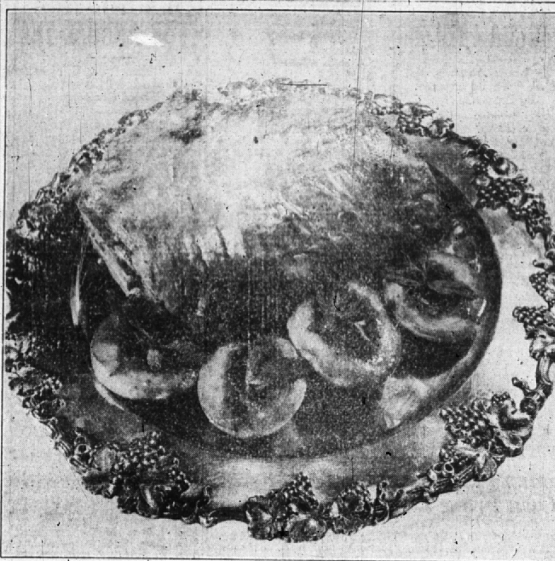
Sue Woods will lead the Seniors at the 6:30 P. M. hour in discussing "Facing the Woods." The Young People's C. E. society members will be present.

Plans are now under way for a new recreational feature one week from Saturday in which all Presbyterian young people will participate. Further announcement will be made next week.

Brained Lettuce

Cut washed heads of Boston lettuce in quarters, cook in salted water until tender. Lift out, shake and brown in shortening in which has been sautéed a few slices of carrot, 1 onion and 1 crumbled bouillon cube.

Festive Lamb Roast For Dinner



A leg of lamb, served with minted peach halves, is an ideal choice for the very special dinner at any time, but more especially for the holidays this year, because there is an abundance of high quality lamb on the market now at reasonable prices.

The leg of lamb shown above is known as the American style, which merely means that the end of the leg bone has been removed, so that the roast can be cooked in a shorter roasting pan.

To roast a leg of lamb, place it, cut side up, on a rack in a hot roasting pan, and allow it to roast at a low temperature (300 to 350° F.) until done. Do not cover and do not add water. Allow thirty to thirty-five minutes per pound for roasting at the low temperature.

The peaches are minted by being simmered in a mint flavored syrup. These are garnished with mint leaves.

Here Are Some Attractive Vegetable Dishes For Winter Menus

The vitamins that we must have are abundant in greens. The necessary roughage food which is not likely to irritate the digestive organs. To the person not requiring energy food they are in season, and to the one needing a food of energy, because they supply the energy with space or dress, high in calories.

How to Cook Greens

Wash and cut the greens, having all leaves free. Put in a bowl of cold water. Put two vessels of water on the stove and bring to a boil. Into the hot water put the greens. Let boil 2 to 3 minutes—no longer. Then drain the water off and add a little cold water. Drain and season with melted butter, cream or white sauce, salt and pepper as desired.

Spinach and Tomatoes

Put a layer of seasoned fresh or canned spinach in a greased casserole, then a layer of canned tomatoes, well seasoned. Repeat, ending with a layer of tomatoes. Bake in a 350° oven for 20 minutes.

Spinach Baskets

Put the crust from a stale loaf of bread and cut in 2-inch squares, scoop out evenly, brush with butter with melted butter and brown crisply in a moderate oven. Fill these containers with well-seasoned creamed spinach. Serve very hot.

Old Fashioned Dutch Greens

2 cups canned greens
1 cup sliced bacon
1 tablespoon sugar
1 1/2 cup vinegar
1 1/2 cup onion
1 1/2 cup weak vinegar

Put the greens in small pieces and fry until crisp. Put these in the cooked greens. Add other ingredients to the bacon fat and cook until thick. Pour over greens, mix well and serve while dressing is hot.

Beet Cups

Wash beets of uniform size.
1 pint cooked greens
2 hard-boiled eggs
1 tablespoon vinegar
1 cup medium white sauce

Wash the beets well and drop into boiling water. Cook until tender, then peel and slip off skin. Remove the center of the beets to form cups. Brush the inside of the cups with salt and butter. Place in top of double boiler to keep hot until ready to use.

Then fill the center of the beets to form cups. Brush the inside of the cups with salt and butter. Place in top of double boiler to keep hot until ready to use.

3-Paper Spinach

2 cups drained cooked spinach
1 tablespoon lemon juice
2 tablespoons onion juice
1 cup medium white sauce
Few drops Tabasco sauce
1 cup grated cheese
1/4 cup buttered crumbs

Add the lemon and onion juice to the spinach and season with salt and pepper to taste. Add the Tabasco sauce to the white sauce. Fill a greased baking dish 7 inches deep with alternate layers of the spinach, white sauce and grated cheese. Cover with buttered bread crumbs and bake 20 to 25 minutes in an oven 350 degrees. Spinach served in this way makes a delicious luncheon dish. Hot buttered rolls and a light dessert complete the meal.

Glacier Priest's To Lecture Sunday At Institute Of Arts

Roaring rapids, a dash into the unimagined wilderness of Northern Canada, the descent to a lake 417 feet below sea level, the discovery of huge fossil tracks in the frozen glaciers, and his last summer's visit to the new government settlement at Matanuska are among the motion picture high-lights to be shown by Father Hubbard, renowned geologist and "Glacier Priest," at Cass Tech auditorium at 3:30 Sunday afternoon, January 10.

For his new lecture which covers his tenth annual expedition to Alaska, Father Hubbard brings the pick of 15,000 feet of new motion pictures. His subject is "New Explorations in Alaska." Reservations should be made at the World Adventure Service office at the Detroit Institute of Arts. Father Hubbard's presentation of the Winter program of this Sunday afternoon illustrated lecture course.

Father Hubbard's studies of the summer geology and "Glacier Priest" at Cass Tech auditorium at 3:30 Sunday afternoon, January 10.

During his ten expeditions into Alaska he has explored the entire 1,800 mile coast of the state of Alaska which he discovered the largest, Aniakchak, as a circumference of 21 miles.

"Won't you kiss me, dear?"
"No, No."
"Ah, fine. Two negatives makes an affirmative."

DU PONT

PAINTS
VARNISHES
DUCO

"See The Complete Line"

PARKS
COAL CO.

Phone 2020 — 283-Brownell

Dry Cleaning
Curtains-Blankets-Drapes
Expert Care
AXLER'S
Theater Bldg. Ph. 1505

WANT 100% HEAT?

Replace extra ash and waste with real heat by selecting your coal with greater care from better grades such as we handle. It costs no more, but it saves you much in heating. Coal for every type of heating in finer quality at fair prices.

PARKS
COAL CO.
Phone 2020

CASH AND CARRY ONLY

MILK DEPOT

217 S. Woodward, Birmingham, next to Birmingham Theatre

Fresh Milk, Qt. 5c
Buttermilk, Qt. 5c
Chocolate Milk, Qt. 10c
Orangeade, Qt. 10c

Sour Cream, 1/2 Pt. 10c
Coffee Cream, 1/2 Pt. 10c
Coffee Cream, Qt. 25c
Whip Cream, 1/2 Pt. 20c

5 cents deposit required on bottles taken out.
We cannot accept other dealers' bottles.
Under Detroit and State Inspection.

Johnson Milk Co.

217 S. Woodward
104 W. 5th St., Royal Oak near Main
22901 Woodward, Ferndale near Whittington

CLEARANCE SALE

ALL LAMPS 25% OFF

Used Radios
At Reduced Prices

R. C. A. Victor - Table Model \$15.00
Sparton - Sparton Model \$25.00
Airline - Table Model \$12.50

and Many Others

LEONARD

ELECTRICAL COMPANY
Home of G. E. Appliances
A Fine Line of Home Fixtures
162 W. MAPLE

Community College Work Is Resumed

Work in the Birmingham Community College was resumed this week with all classes meeting on schedule except those taught by Miss Frances Kahn who was not able to be here Monday and Tuesday.

Miss Ann Mary Peirce, instructor in French and Spanish, is dividing her time between Birmingham and Royal Oak. She will be in Birmingham each Monday, Wednesday and Friday as usual.

Several new students have entered and a number who had dropped out before the holidays have returned.

Beginning next week Mrs. R. L. Auster of Detroit will lead a discussion with all classes meeting on schedule except those taught by Miss Frances Kahn who was not able to be here Monday and Tuesday.

Miss Ann Mary Peirce, instructor in French and Spanish, is dividing her time between Birmingham and Royal Oak. She will be in Birmingham each Monday, Wednesday and Friday as usual.

Several new students have entered and a number who had dropped out before the holidays have returned.

Beginning next week Mrs. R. L. Auster of Detroit will lead a discussion with all classes meeting on schedule except those taught by Miss Frances Kahn who was not able to be here Monday and Tuesday.

As Ex-King Let Cameras Shoot



Consenting finally to pose for cameras who had kept a long vigil outside Kensington Palace, Austria, where he is staying, the Duke of Windsor, former King Edward VIII, appeared for pictures, above, in modest business attire. The one-time monarch allowed photographers to click away for 10 minutes for the first pictures he has permitted since his abdication.

ORDINANCE NUMBER 220
City of Birmingham
ORDINANCE TO AMEND BUILDING CODE

An Ordinance to Amend Section 1-1-1 of the Birmingham Ordinance Number 187, as amended, relating to the building code, to read as follows:

1-1-1. A permit for erecting a building shall not be issued until such deposit of not less than fifty (50) dollars has been made to the building inspector. The deposit required for making permit shall be returned to the applicant when the lot is not left in a condition satisfactory to the building inspector. When the inspector shall issue a license in writing to the person who has the permit to build, and in the event the condition of the lot is not satisfactory to the inspector, the lot shall be left in a condition satisfactory to the inspector within ten (10) days after such written notice has been given by the building inspector. The deposit shall be used to make good the condition of the lot in accordance with the building code. This Ordinance shall take effect immediately after the passage thereof by the Council of the City of Birmingham, Michigan, and publication thereof.

JOHN E. HANLEY Mayor
IRVING E. BARTLE Clerk

Realty Association To Check Members

The American Institute of Real Estate Appraisers announces an amendment to its by-laws to provide for disciplinary action in any case that may arise where an appraisal opinion expressed by a member is such as to raise the question of professional misconduct or incompetence.

The new provision is of public interest particularly in connection with appraisal opinions in court cases, and would cover any case where apparent disparity from the facts or unassessable disparity between two appraisal opinions, should raise a question of the appraiser's professional integrity.

The new by-law makes it the duty of every member of the Institute "formally to notify the President of the Institute, in writing, of each and every instance coming to his attention where any Member or Associate Member of the Institute shall have appraised, testified, or otherwise publicly expressed an opinion of value of a property or properties where such opinion reflects professional misconduct or incompetence."

ALMANAC

A nod is as good as a wink to a blind horse.

JANUARY

1-Andrew Jackson defeats the British at New Orleans, 1815.
2-The federal ship Star of West is lost upon the coast.
3-England established first penny post, 1840.
4-First national lottery drawn in England, 1568.
5-Amelia Earhart Pursued Short Hauls, October 1925.
6-People of Sam territory vote to return to Germany, 1919.
7-First written constitution in history adopted at Hartford, Conn., 1639.

EAGLE CAUSES TROUBLE

Birmingham, (12)—When a telephone line became short-circuited, John Adams, telephone lineman, went hunting for the cause of the trouble. He brought back a golden eagle, measuring three feet from tip of tail, with a wingspread of seven feet. The big bird, with a steel trap and chain attached to its leg, was found entangled in the wires, short-circuiting them.

BOY KILLS PLAYMATE

New York—A 13-year old boy, now an inmate of the N. Y. State Training School for Boys at Warwick, N. Y., confessed that he had murdered his 10-year old boy playmate three months ago after a quarrel over the division of stolen loot and had hidden his body in the closet of an abandoned tenement house. An investigation by police disclosed the body, jammed inside the small closet.

SPECIALS

THURS. -- FRI. -- SAT.

- UNCORN
TOATOES 2 No. 2 Cans 29c
- PREMIER
GRAPEFRUIT JUICE 2 No. 2 Cans 23c
PREMIER COFFEE 1 lb. 27c
- OHIO CHIEF
PURE MAPLE SYRUP Qt. 69c
SUNSHINE
KRISPY CRACKERS . . . 2-lb. Pkg. 29c
- BURNETT
VANILLA 2-oz. Bot. 29c
BLUE VALLEY
BUTTER 1 lb. 41c
- STRICTLY FRESH
EGGS Doz. 38c
JUICY — FLORIDA
ORANGES 2 Doz. 39c
- GENUINE SPRING
LEG O LAMB 1 lb. 23c
- BABY BEEF
POT ROAST 1 lb. 21c
SWIFT'S PREMIUM
SLICED BACON 1 lb. 39c
- JONES DAIRY FARM
SAUSAGE — Link or Meat . . . 1 lb. 39c
CHOICE STEER
ROLLED RIB ROAST 1 lb. 41c
FRESH DRESSED
ROASTING CHICKENS 1 lb. 31c

BIRMINGHAM FRUIT CO.

Free Delivery Service
PHONE 65 124 N. WOODWARD

SEMI-ANNUAL--

CUSTOM MADE

SUIT SALE

2-PANT SUITS \$31⁷⁵ to \$62⁰⁰

The Extra Pants Are Free During This Great Sale

A Large Selection of Fine Woolens Tailored to Your Own Requirements

PECK'S Phone 230

108 S. Woodward