

IN THE WORLD OF SPORTS

Martin Yields to Temptation—Picks Nation's Best in Coming Football Season; Minnesota Gets His Vote for U. S. Champion

BY PHILIP MARTIN

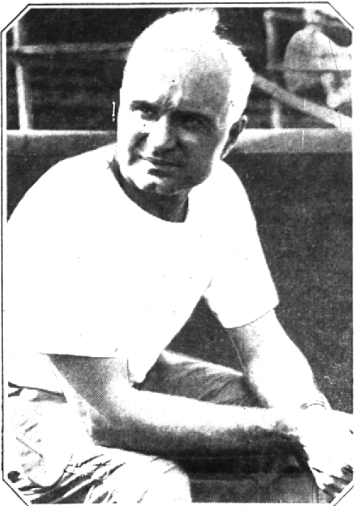
FOOTBALL is a well-nigh unpredictable sport, as witness the prosperity of the boys who operate the pick four, pick five, etc., rackets during the fall season.

But along in September the sports series invariably begin considerations, their countenances wear sage-of-the-ages expressions, and they nominate "great" teams that usually get kicked around by some cow college with almost fewer enrollees than the big schools have deans.

Many things can happen to a football squad between campaigns. Once in a while a coach will be blessed with a bunch of sophomores that tears a major conference apart. The same group may be ultra futile in the junior year. Enthusiasm sometimes wears off. And grades must be made and late courting steered clear of.

Other green hopefuls may hit their peak near the end of their college years and be hailed as the "team that came back."

One great player may make a great team out of a very ordinary array of gridlers, despite the team play song and dance. To be good, a team must have blocking but you never saw a great outfit without at least one player of All-American caliber.



It is really an extremely cheerful (for him) expression that Bernie "Gloomy Gus" Bierman wears in this recent picture. And coaches whose teams meet Bernie's Minnesota Gophers this fall may do well to take warning.

DESPITE the fact that he should know better, your correspondent annually climbs out on a well-worn branch and sprindles about a few pearls of prognostication that time and again have proved utterly valueless. So here are the 1936 lot.

East: Pittsburgh looks best. The Smoky City school had a fine team last year, and experience and the addition of some spectacular recruits, should be almost unstopable. Princeton suffered heavy graduation losses, but may come up with another high-scoring machine. The Tigers ought to be helped along by new men. Don't overlook Dartmouth.

Big Ten: Bernie Bierman and Michigan always good, raise Ohio State and Northwestern look second and third best. Outside the conference, but in the

same section, Notre Dame and Michigan State will have their usual high-powered elevens. Big Six: Nebraska makes a habit of dominating this circuit, but Oklahoma and Missouri are coming up this fall and the other teams are well fortified.

SOUTH: Louisiana State might crash through, with a bit of luck. Duke, Tennessee, and Alabama will push the Tigers.

Southwest: Texas gets the call, just slightly louder than Texas Christian. It is asking too much of Matty Bell to conjure

up a front runner from the remnants of his S. M. U. Rose Bowl second-placers. Rocky Mountain: Hard to figure, but will take a dive on Utah, after a quick look at past records.

Pacific Coast: West Coasters already are caroling the praises of a "colossal" eleven at Washington and we won't quarrel with them. California's Bears are going to be tough. Oh, well, we might as well go whole hog—NATIONAL CHAMP: Minnesota.

concrete Tuesday, progress on the job of widening Woodward avenue with a distant cement strip from Clayson to Lincoln roads is fast gaining momentum, and inspectors on the work feel confident the job will be completed within at least a few days of Oct. 12, the scheduled date.

The allowance for large-hole expenses granted village employers at the rate of \$25.00 per month may be temporarily suspended by the Commission on their suggestion of Commissioner Madeline Lowman.

With delinquent tax totals steadily mounting, the Village of Birmingham has been forced for the first time in its history, to vote a recessive of loans to avoid default of payment.

With the registrations already over the 200 mark, and last week's registrations expected to swell the total still higher, Cranbrook School for Boys is on the verge of final preparations for the fall term opening next Monday.

Try an Eccentric Classified Ad!

Happenings of Long Ago

Bite Of News Gleaned From Old Files Of The Eccentric—The Items That Make Up The Historical Background Of The Birmingham Of Today.

FIFTY YEARS AGO
On last days you will find few water pipes on every thing at Carson's.

E. E. Conner and family have moved with their effects to Owasco. Good luck to them.

George F. Aldrich will live on pumpkin pie the rest of his life. He has a pumpkin six feet by six and weighs 32 pounds, and it is all going pie-wards.

The earthquake was felt in our midst by several parties. Some day undoubtedly we will have a terrific shock that will make us all look seven different ways for Sunday. We wonder who did not catch it this time.

Mrs. C. Pearsall, mother of Mrs. S. T. Boyd, is getting along very well and will soon recover from the effects of having her tumor removed. Taking the good news into consideration, her cure is almost marvelous.

The Birmingham school never opened with a brighter prospect than it did this very season. The first month there were 210 new enrollees and this week Monday, showed an increase of 15. All the rooms under the new edification are just full enough, the teachers are good enough, the pupils are bright enough, and the school to feel proud enough of our educational system. The opening day was a big affair, the truth being represented by Ross, Sherrard and McKee. The entire board were present and this encouraged the teachers who in return will give our vicinity a school name second to none in the state.

TWENTY-FIVE YEARS AGO
Eight grade examinations were held at the high school. Pupils are even coming from Royal Oak because of our good schools.

Charles D. Lyon of Troy Township, climbed on the roof of his house, Wednesday looking for a leg and got striking himself on the back porch.

A mischievous lad of Buckhorn Corners, in the vicinity of Franklin threw a stone viciously, and hit his playmate, Willie Butterfield in the eye.

Mrs. Ella Poppleton has made a very generous donation of books to the Birmingham public library. We are very thankful for such contributions.

Mr. Frank Roche is busy looking for weeds, advertising tags, and everything that mars the looks of our town. Help him out and don't hinder. It is your town.

Mr. Charles Crisley of Lansing formerly of Royal Oak, visited Birmingham last Sunday. He was trying to find the grave of his mother, who was buried in some cemetery near this place. Anybody know?

About 30 young people of the Troy and Birmingham United Presbyterian churches gave a farewell party Tuesday evening in honor of Miss Esther Pinkerton at

the parsonage. The young people of the Birmingham church presented Miss Pinkerton with a black silk umbrella, and the Troy young people gave her a gold clock. The young men of the Birmingham church left a knife to be given to John Pinkerton, who at present is with an uncle in Illinois. Miss Pinkerton will enter Miamouth College this fall.

FIVE YEARS AGO
A total of 2,800 students, the largest enrollment in the history of the Birmingham school system, had registered at the end of the second day of the fall term yesterday. It was announced by Charles Viet, superintendent.

With the pouring of the first

Election Notice

To the qualified electors of the City of Bloomfield Hills.

Notice is hereby given that a General Primary Election will be held in the City Office Building, East Long Lake Road and Woodward Avenue, City of Bloomfield Hills, County of Oakland and State of Michigan, on

Tuesday, September 15, 1936

for the purpose of nominating candidates for the following offices:

- NATIONAL AND STATE
 - Governor
 - Lieutenant Governor
 - United States Senator
 - Representative in Congress
 - State Senator
 - Representative of State Legislature
- COUNTY
 - Judge of Probate
 - Prosecuting Attorney
 - Sheriff
 - Clerk
 - Treasurer
 - Register of Deeds
 - Circuit Court Commissioner
 - Drain Commissioner
 - Coroner
 - Surveyor
 - Delegates to County Convention

POLLS WILL BE OPEN FROM 7:00 A. M. to 8:00 P. M., Eastern Standard Time

FRANK W. ATKINSON, City Clerk.

SPECIALS For The Week-End

GENUINE SPRING LEG O LAMB 1 lb. 28^c

PRIME STANDING RIB ROAST BEEF 1 lb. 28^c

SEMINOLE-GEORGIA-PEANUT Ham Whole or Shank Half 29^c 1 lb.

FRESH DRESSED TURKEY—From Alma, Mich. SHOULDER ROAST BEEF—For oven or pot 1 lb. 22^c CORNED BEEF TONGUES 1 lb. 25^c

EXTRA FANCY—ROASTING CHICKENS 1 lb. 32^c

ROLLED Roast Lamb 1 lb. 32^c

Philadelphia Cream Cheese 3 pkgs. 27^c Danish—Bleu Cheese 1 lb. 49^c OLD NEW YORK CHEESE—Very Sharp 1 lb. 39^c

Beechnut Coffee 1 lb. 27^c

LIBBY'S ALASKA RED SALMON tall cans 23^c PRINCE FINEST Bartlett Pears No. 2 1/2 can 25^c WEIDEMAN Cut Green & Wax Beans can 19^c Doz. cans \$2.15

RAGGEDY ANN FERNDLE No. 2 1/2 Can 25^c Doz. cans \$2.90

LA SEVILLANA QUEEN OLIVES qt. jar 45^c WEIDEMAN PEACHES No. 2 1/2 can 22^c Doz. cans \$2.45

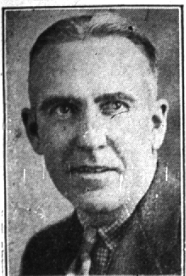
LIBBY'S SWEET AND SWEET MIXED Pickles Qt. Jar 25^c

PREMIER BRAND Grapefruit Juice 2 No. 2 cans 25^c WEIDEMAN Natural Green Asparagus can 25^c Doz. cans \$2.85

LIBBY'S TOMATO JUICE No. 5 Can 23^c

SFIRE'S

QUALITY FOODS • ECONOMY PRICES



George N. HIGGINS

REPUBLICAN CANDIDATE

for STATE SENATE

- Increased Old Age Pension.
- Better Adjustment of Mother's Pension.
- Adequate Support of Public Schools.
- Support of Proposed Civil Service Measure.
- Efficient Retirement Fund Laws.

GENERAL PRIMARY ELECTION NOTICE

To the qualified electors of the City of Birmingham, County of Oakland, State of Michigan.

Notice is hereby given that a General Primary Election will be held in the City of Birmingham, in the County of Oakland and State of Michigan, on

TUESDAY, SEPT. 15, 1936
from seven o'clock in the forenoon until eight o'clock in the afternoon, Eastern Standard Time

for the purpose of nominating candidates for the offices of Governor, Lieutenant Governor, United States Senator, Representative in Congress, State Senator, Representative of State Legislature, Judge of Probate, Prosecuting Attorney, Sheriff, Clerk, Treasurer, Register of Deeds, Circuit Court Commissioners, Drain Commissioner, Coroners, Surveyor and Delegates to the County Convention.

Said election will be held at the following polling places:

Precinct No. 1—Voting Booth at the Holy Name School—is all that territory bounded on the north by City Limits, on the east by Woodward Avenue, on the south by Maple Avenue, and on the west by City Limits.

Precinct No. 2—Voting Booth at the Adams School—is all that territory bounded on the north by City Limits, on the east by City Limits, on the south by Maple Avenue, and on the west by Woodward Avenue.

Precinct No. 3—Voting Booth at the Municipal Building—is all that territory bounded on the north by Maple Avenue, on the east by Woodward Avenue, on the south by Lincoln Avenue, and on the west by City Limits.

Precinct No. 4—Voting Booth at the Wylie Bell Garage, east side of Elm Street, 150 ft. south of Maple Avenue—is all that territory bounded on the north by Maple Avenue, on the east by City Limits, on the south by Lincoln Avenue, and on the west by Woodward Avenue.

Precinct No. 5—Voting Booth at the Embury Methodist Church, corner of S. Woodward and Benvaile—is all that territory bounded on the north by Lincoln Avenue, on the East by City Limits, on the south by City Limits, and on the west by City Limits.

IRENE E. HANLEY, City Clerk