

Fine Food For Your Easter Table

WEEK END SPECIALS

SWIFT'S PREMIUM Smoked Hams
 Whole or Shank End lb. **27c**
 BUTT END lb. **31c**

9 A. M.
Coffee Lb. **15c**
 Pure Granulated **Sugar** 5 lbs. **25c**

LEG O LAMB Lb. **27c**

DELICIOUS GROSSE POINTE PRESERVES
 WHOLE FRUIT Lb. Jar **18c**

PORK LOIN Lb. **24c**
 RIB END

Choice — Grosse Pointe Quality
PEACHES
 In Heavy 2 Cans 2 1/2 Syrup **31c**

CHUCK ROAST Lb. **19c**

Try our Strictly Fresh Eggs with a choice slice of delicious Ham for your Easter Morning Breakfast.

FRESH FRUITS AND VEGETABLES DAILY
Economy Market
 303 - 311 EAST MAPLE
 PHONE 771 — FREE DELIVERY — OPEN EVENINGS 'TIL 9
 SHOP ON EAST MAPLE — PLENTY OF FREE PARKING!

DO YOU KNOW



The Printing Department of The Birmingham Eccentric has four salesmen in Detroit Daily?

Most of our printing is done for Detroit customers. Our sales activity is concentrated in Detroit as a result.
 If your business is located in Detroit one of these four salesmen will gladly call on you.
 We have two direct private lines from Detroit to our switchboard in Birmingham for the use of our Detroit customers. By phoning Elmhurst 6644 or 6645 you are directly connected with our switchboard.
 Our salesmen can be reached at all times by our operator, and so there is, generally, a salesman within a few minutes reach of your office throughout the day.
 Each salesman is fully qualified to discuss intelligently your printing needs. Every Eccentric salesman has been trained in advertising and merchandising practices.
 You will find him capable of "sitting on your side of the desk" to discuss the development of your sales literature and general printing needs. You are invited to call upon one of these salesmen today to explain more fully our complete printing service without obligation on your part to buy.

COMPLETE IN OUR OWN PLANT
 Machine composition, hand composition, press equipment, bindery and mailing facilities, plus comprehensive layout and finished art work service.

FOUR SALESMEN IN DETROIT DAILY

Telephones:

Birmingham 11-12-13 *Detroit, Elmhurst 6644-45

THE BIRMINGHAM ECCENTRIC

*Two Direct Detroit Lines To Our Birmingham Office

MAY TAX SALE HELD ILLEGAL

Due Process Of Law Is Violated Says Cram, Pontiac Attorney

Unless the Michigan State Supreme Court holds otherwise, the opinion of Oakland County's three judges, that the holding of the proposed May 5 tax sale of lands is illegal will make impossible the sale of delinquent property, it was stated this week at Pontiac. Judges Frank L. Doty, Russell Holland, and George B. Hartrick, sitting jointly, sustained the objection of George L. Cram, Pontiac attorney, who seeks to prevent the tax sale on the basis that Auditor-General John J. O'Hara, in refusing to advertise each property description affected, is violating the Constitutional requirement that persons are entitled to a display advertising notice, consisting merely of a court order in each county, through which to call the public's attention to the sale.

Under the State Constitution, the Auditor-General always has published detailed descriptions of each piece of property, in lieu of persons who are in the persons concerned. It is government's most economical method of complying with the "due process of law" requirements.

The opinion of the three Circuit judges set forth the fact, also, that the Auditor-General's delinquent list are not correct, since tax payments have been made in each of the 83 Michigan counties, thousands of which are in Oakland. The judges also held that insufficient time will elapse between April 25, when county treasurer Charles Sparks receives the State's list of delinquent properties, and May 5, the date of the tax sale, for reconciling the two sets of records.

A similar case has been started in Ingham County, and it is expected that the State Supreme Court will dispose of the matter before May 5.

Tourists Crowd Florida Resort, Local Man Says

Mr. and Mrs. A. G. Harrington of 511 Merrill Street have just recently returned from a ten-week trip to Florida, visiting at St. Petersburg and nearby resorts. Mr. Harrington reports that unreasonable weather prevailed while they were in Florida's west coast resort town, damp and chilly days lasting until about two weeks ago, though visitors continued to arrive.

Referring to the heavy tourist trek to the sunshine state, Mr. Harrington pointed out that the Chamber of Commerce registration at St. Petersburg showed an increase of 3,000 over any previous year, or approximately 55,000 people in all. He said that Commerce executives there asserted that only one out of every three who came to the city took the trouble to register. Based on that statement, Mr. Harrington stated that over 150,000 tourists have been in St. Petersburg this winter.

Despite the somewhat inclement weather conditions, Mr. Harrington admired St. Petersburg enough to write:

"There's a beautiful city on Tampa Bay.
 Far from the storms of ice and snow,
 Where the mocking birds sing all the day,
 And the fruit and flowers ever grow,
 St. Petersburg, Florida, is its name.
 Its climate is perfect, its houses we admire,
 For the 'Sunshine City' has fish to fame,
 And here one secures his heart's desire."

METHODIST CHURCH HAS EASTER PROGRAM

The Easter observance at the First Methodist Church will begin with a Sunrise Communion Service at 6:30, held under the auspices of the Epworth League.

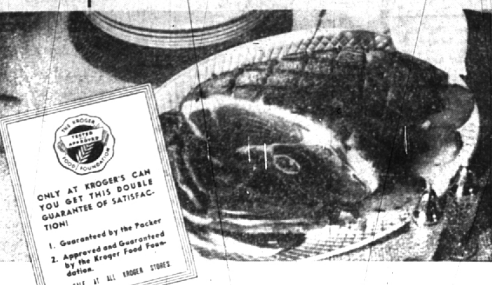
At 8:45, Junior, Intermediate, and Senior Departments of the school will gather, and join in an assembly worship service. Members of the school, as well as the departments, will share in the service. There will be a short Easter address by the minister.

For the morning worship at 11:10, the choir will present "Easter Music" under the direction of Mrs. Marion Jewell. The subject of the sermon will be, "The Living Bread and Life Eternal."
 At 3:30, a special service for the presentation of little children for Christian baptism will be held. The day will conclude with the Church School Easter program at 7:00 o'clock, with special numbers by the Primary Department, and the presentation of the play, "The Symbol of the Cross," by Shannon, by a group of senior young people directed by Mrs. Russell Heine.

An Apology

Last week we asked Reverend Theodore Wagner to write an article on youth and its relation to the church. The Redeemer Lutheran minister obliged us with a splendid article entitled, "Youth Challenges The Church." Through error, Reverend Wagner's name was omitted from the story and The Eccentric apologizes for the mistake and takes this opportunity to thank him for his efforts.

THEY'RE IN THE PINK! KROGER HAMS For Easter



HAM IS TO EASTER what Turkey is to Thanksgiving!

Nowhere will you find pinker, tenderer, more satisfying hams than those at Kroger's. And this should be, because...
 EACH is personally selected by our own experts AT THE PACKERS.
 EACH is tested and approved by our Food Foundation for the texture, flavor, wholesomeness and purity.
 EACH is DOUBLY GUARANTEED by the packer and by the Food Foundation.

A Fine Selection of Swift Premium and Armour Star Hams at Very Attractive Prices.

- Crisp Fresh RITZ CRACKERS pkg 15c
- French's Pure Clean BIRD SEED pkg 13c
- Shinola or 2-in-1 SHOE POLISH each 10c
- Pure Granulated BROWN SUGAR lb. 9c
- Gelatin Dessert TWINKLE 3 pkgs 15c
- Country Club Energy FRESH BREAD 1/2 lb loaf 9c
- Easter Bird JELLY EGGS lb. 10c
- May Garden Orange Pekoe and PEKOE TEA 1/2 lb 33c
- Pass or Chick Chick EGG DYES pkg 10c
- Lotiona Club or Rocky River BEVERAGES 3 bottles 25c
- Bartlett PEARS No. 2 1/2 can 15c
- Libby's De Luxe PLUMS No. 2 1/2 can 15c

JACK SPRAT
SMOKED HAMS

VEAL ROAST

- PILLSBURY'S SNO-SHEEN CAKE FLOUR pkg 23c
- COUNTRY CLUB SPINACH 2 No. 2 cans 19c
- FRESH HOT-DATED FRENCH COFFEE lb 19c

Whole or Shank Half lb. **27c**

Boneless-Rolled Mich. Milk Fed No Bone - No Waste lb. **29c**

BLUE LABEL SALADA TEA 33c
 1/2 lb
 1/4 lb pkg 19c

COUNTRY CLUB SLICED **PINEAPPLE 2 No. 2 1/2 cans 37c**

GUARANTEED FRESH SILVER FARM **FRESH EGGS doz. 19c**



COUNTRY CLUB SALAD **DRESSING quart jar 29c**

FOR BATH TUBS KITCHEN AND ALL CLEANING **BON AMI POWDER can 10c**

RED CROSS MACARONI OR **SPAGHETTI box 5c**

FRESH FLUFFY CAMPFIRE **MARSHMALLOWS pkg 17c**

MELO RIPE, LUSCIOUS GOLDEN **BANANAS 3 lbs. 17c**

MICH. MAID **Butter** lb. **32c**

Extra Large Mor-juce Breakfast **ORANGES doz. 29c**

Snow White Fresh Sunkist Jumbo **Cauliflower 1 lb head 19c Lemons . . 5 for 14c**

Fresh and Tender **Green Peas . lb. 15c Cucumbers . each 10c**

BARTLETT **Pears** No. 2 1/2 Can **15c**

Solid Crisp Iceberg Large Size **LETTUCE . . 2 heads 15c**

KROGER STORES