

Society and Personal Notes

A. A. U. W. TO OPEN Parish House In New Garb Will Be Opened To Guests

For First Time Shop Will Keep Evening Hours This Year

Those who are looking for new volumes to tack in the family book rack will be interested in the book sale sponsored by the Birmingham Branch of the American Association of University Women, which will open Monday at 176 West Maple to continue through the week. An innovation this year will be the fact that the sale will be open each evening until 9 o'clock to give those otherwise occupied during the day an opportunity to browse about in the evening. Each year one finds an amazing variety of reading matter collected to appeal to a diversity of interests. As usual, there will be numerous books of fiction, and virtually everything in the way of non-fiction ranging from books to psychology to the latest in science. Mrs. William H. Jackson is acting chairman of the sale due to the illness of Mrs. Ruth S. Jackson. Mrs. H. S. Burlingame is chairman of transportation; Mrs. John W. Gault, solicitation; Mrs. William Schultz, pricing; Mrs. James J. Reilly, Jr., sales; Mrs. Henry Hart, publicity; and Mrs. F. B. Rumble, equipment.

Parish House In New Garb Will Be Opened To Guests

Conceded to the activity of St. Margaret's Guild, St. James' Episcopal church, during the past few weeks, even the usual changes produced under the hand of Mrs. Pease's direction and by the enthusiasm and energy of League members.

The redecoration of the house was a matter of real business. Guild members reported for work every day each week in snocks and slacks, and all hands remained on deck until the work was completed.

The Parish House Warming will give others an opportunity to view the house in its new garb and incidentally, proceeds will be used to defray the cost of paint and materials used in the redecoration and remodeling.

CONTRACT BRIDGE

Written For Central Press and The Birmingham Eccentric

By E. V. SHEPARD

FAMOUS BRIDGE TEACHER

MASTERING BRIDGE (30)
AS DEFINED BY THE 1-NO Trump, followed by a take-out, and resulting in a no-trump or in a suit contract, is usually chargeable to the partner making the shift, because he has failed to show his great strength. The following examples will serve to show the part each member of the declaring side should take in reaching the highest safe landing.

Suppose that 1-No Trump has been bid, and that partner holds the following unusual hand:

♠ A K Q 9 8 5 3 ♣ Q 4 ♢ A 9 5 ♣ 7 6 5 4 3 2

The take-out should be 5-Spades. The opening bidder is supposed to hold a minimum of 2½ quick tricks, composed of some of the following tricks, moving from the above hand: Ace and Queen of hearts, A-K of diamonds and Ace and Queen of clubs. If the 1-No Trump bidder holds something like the first hand below, he must pass. With as good a holder as the second hand shown he will raise to 2-Spades.

♠ 7 6 4 ♣ A Q 6 ♢ A 7 2 ♣ A 9 5 ♣ 7 6 5 4 3 2

♠ 7 6 4 ♣ A Q 6 ♢ A 7 2 ♣ A 9 5 ♣ 7 6 5 4 3 2

♠ 7 6 4 ♣ A Q 6 ♢ A 7 2 ♣ A 9 5 ♣ 7 6 5 4 3 2

♠ 7 6 4 ♣ A Q 6 ♢ A 7 2 ♣ A 9 5 ♣ 7 6 5 4 3 2

♠ 7 6 4 ♣ A Q 6 ♢ A 7 2 ♣ A 9 5 ♣ 7 6 5 4 3 2

♠ 7 6 4 ♣ A Q 6 ♢ A 7 2 ♣ A 9 5 ♣ 7 6 5 4 3 2

♠ 7 6 4 ♣ A Q 6 ♢ A 7 2 ♣ A 9 5 ♣ 7 6 5 4 3 2

♠ 7 6 4 ♣ A Q 6 ♢ A 7 2 ♣ A 9 5 ♣ 7 6 5 4 3 2

♠ 7 6 4 ♣ A Q 6 ♢ A 7 2 ♣ A 9 5 ♣ 7 6 5 4 3 2

♠ 7 6 4 ♣ A Q 6 ♢ A 7 2 ♣ A 9 5 ♣ 7 6 5 4 3 2

♠ 7 6 4 ♣ A Q 6 ♢ A 7 2 ♣ A 9 5 ♣ 7 6 5 4 3 2

♠ 7 6 4 ♣ A Q 6 ♢ A 7 2 ♣ A 9 5 ♣ 7 6 5 4 3 2

♠ 7 6 4 ♣ A Q 6 ♢ A 7 2 ♣ A 9 5 ♣ 7 6 5 4 3 2

♠ 7 6 4 ♣ A Q 6 ♢ A 7 2 ♣ A 9 5 ♣ 7 6 5 4 3 2

♠ 7 6 4 ♣ A Q 6 ♢ A 7 2 ♣ A 9 5 ♣ 7 6 5 4 3 2

♠ 7 6 4 ♣ A Q 6 ♢ A 7 2 ♣ A 9 5 ♣ 7 6 5 4 3 2

♠ 7 6 4 ♣ A Q 6 ♢ A 7 2 ♣ A 9 5 ♣ 7 6 5 4 3 2

♠ 7 6 4 ♣ A Q 6 ♢ A 7 2 ♣ A 9 5 ♣ 7 6 5 4 3 2

♠ 7 6 4 ♣ A Q 6 ♢ A 7 2 ♣ A 9 5 ♣ 7 6 5 4 3 2

♠ 7 6 4 ♣ A Q 6 ♢ A 7 2 ♣ A 9 5 ♣ 7 6 5 4 3 2

♠ 7 6 4 ♣ A Q 6 ♢ A 7 2 ♣ A 9 5 ♣ 7 6 5 4 3 2

♠ 7 6 4 ♣ A Q 6 ♢ A 7 2 ♣ A 9 5 ♣ 7 6 5 4 3 2

♠ 7 6 4 ♣ A Q 6 ♢ A 7 2 ♣ A 9 5 ♣ 7 6 5 4 3 2

♠ 7 6 4 ♣ A Q 6 ♢ A 7 2 ♣ A 9 5 ♣ 7 6 5 4 3 2

♠ 7 6 4 ♣ A Q 6 ♢ A 7 2 ♣ A 9 5 ♣ 7 6 5 4 3 2

♠ 7 6 4 ♣ A Q 6 ♢ A 7 2 ♣ A 9 5 ♣ 7 6 5 4 3 2

♠ 7 6 4 ♣ A Q 6 ♢ A 7 2 ♣ A 9 5 ♣ 7 6 5 4 3 2

♠ 7 6 4 ♣ A Q 6 ♢ A 7 2 ♣ A 9 5 ♣ 7 6 5 4 3 2

♠ 7 6 4 ♣ A Q 6 ♢ A 7 2 ♣ A 9 5 ♣ 7 6 5 4 3 2

♠ 7 6 4 ♣ A Q 6 ♢ A 7 2 ♣ A 9 5 ♣ 7 6 5 4 3 2

♠ 7 6 4 ♣ A Q 6 ♢ A 7 2 ♣ A 9 5 ♣ 7 6 5 4 3 2

♠ 7 6 4 ♣ A Q 6 ♢ A 7 2 ♣ A 9 5 ♣ 7 6 5 4 3 2

♠ 7 6 4 ♣ A Q 6 ♢ A 7 2 ♣ A 9 5 ♣ 7 6 5 4 3 2

♠ 7 6 4 ♣ A Q 6 ♢ A 7 2 ♣ A 9 5 ♣ 7 6 5 4 3 2

♠ 7 6 4 ♣ A Q 6 ♢ A 7 2 ♣ A 9 5 ♣ 7 6 5 4 3 2

♠ 7 6 4 ♣ A Q 6 ♢ A 7 2 ♣ A 9 5 ♣ 7 6 5 4 3 2

♠ 7 6 4 ♣ A Q 6 ♢ A 7 2 ♣ A 9 5 ♣ 7 6 5 4 3 2

♠ 7 6 4 ♣ A Q 6 ♢ A 7 2 ♣ A 9 5 ♣ 7 6 5 4 3 2

♠ 7 6 4 ♣ A Q 6 ♢ A 7 2 ♣ A 9 5 ♣ 7 6 5 4 3 2

♠ 7 6 4 ♣ A Q 6 ♢ A 7 2 ♣ A 9 5 ♣ 7 6 5 4 3 2

♠ 7 6 4 ♣ A Q 6 ♢ A 7 2 ♣ A 9 5 ♣ 7 6 5 4 3 2

♠ 7 6 4 ♣ A Q 6 ♢ A 7 2 ♣ A 9 5 ♣ 7 6 5 4 3 2

♠ 7 6 4 ♣ A Q 6 ♢ A 7 2 ♣ A 9 5 ♣ 7 6 5 4 3 2

♠ 7 6 4 ♣ A Q 6 ♢ A 7 2 ♣ A 9 5 ♣ 7 6 5 4 3 2

♠ 7 6 4 ♣ A Q 6 ♢ A 7 2 ♣ A 9 5 ♣ 7 6 5 4 3 2

♠ 7 6 4 ♣ A Q 6 ♢ A 7 2 ♣ A 9 5 ♣ 7 6 5 4 3 2

♠ 7 6 4 ♣ A Q 6 ♢ A 7 2 ♣ A 9 5 ♣ 7 6 5 4 3 2

♠ 7 6 4 ♣ A Q 6 ♢ A 7 2 ♣ A 9 5 ♣ 7 6 5 4 3 2

♠ 7 6 4 ♣ A Q 6 ♢ A 7 2 ♣ A 9 5 ♣ 7 6 5 4 3 2

♠ 7 6 4 ♣ A Q 6 ♢ A 7 2 ♣ A 9 5 ♣ 7 6 5 4 3 2

♠ 7 6 4 ♣ A Q 6 ♢ A 7 2 ♣ A 9 5 ♣ 7 6 5 4 3 2

♠ 7 6 4 ♣ A Q 6 ♢ A 7 2 ♣ A 9 5 ♣ 7 6 5 4 3 2

♠ 7 6 4 ♣ A Q 6 ♢ A 7 2 ♣ A 9 5 ♣ 7 6 5 4 3 2

♠ 7 6 4 ♣ A Q 6 ♢ A 7 2 ♣ A 9 5 ♣ 7 6 5 4 3 2

which the tape of the upholstery fabrics harmonizes. Seat cushions are deeply padded and set off with new piping. In de luxe types various upholstery options are available. Recessed arm rests get added elbow room in the Fordor and Fordor touring sedan.

All instruments are of new design to conform to the modern effect of the new gray metallic pyroxylon instrument panel. De luxe car panels are fitted with five-mile speedometer, with trip mileage recorder; ammeter, water temperature indicator, electric fuel gauge and electric oil gauge, as well as gear lighter, tilting ash tray and glove compartment. The ash tray may be removed and Fordor installed upon special order.

All body types have clear-view ventilation. Safety glass is standard in windshields and all doors and windows.

PURELY PERSONAL

We like the way Senator Cullen's daughter, Marge, swung her yacht on wheels around Birmingham's corners. She seems to have a knack of her own.

The Ralph Smiths (Betty Packard) recently returned to Birmingham.

Mr. and Mrs. D. C. Mann were among the dancers enjoying themselves at Orchard Lake Country club Saturday night.

We heard a number of recordings from WFLX Royal that dedicated to Birminghamites.

Claude Mosher is the president, or at least the latest mood father in the Lions Club. The Moshers have a six-pound baby girl.

In one of the Birmingham show windows used to display women's wearing apparel, a beautiful lady

Miss Verdier

Representing

Tioga

Yarns

will be here

October 24th & 25th

with a complete selection

of yarns and models.

The Knitting

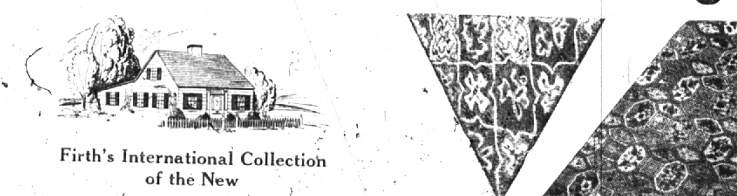
Shop

161 W. MAPLE

Waites

Pontiac's Quality Store Offers

Early American Furnishings



Firth's International Collection of the New

Farmhouse Rugs

Deep, Thick Pile in Rich Shades - Axminster Woven

The 9x12 Ft. Size, \$35
27 x 54 in. Throw Rug, \$3.50

Firth's fine quality accurate reproductions of small all-over hooked designs that show marked freedom of expression and create the decorative value of the simple motif. Made with the new "Sanitized" pure wool which means the wool is shorn from clean, healthy sheep to give you the utmost in fresh, sanitary products. A most unusual collection of patterns.

Spick-and-Span

A cleaner for all natural wood and painted surfaces. 25c lb.

Washington Colonial

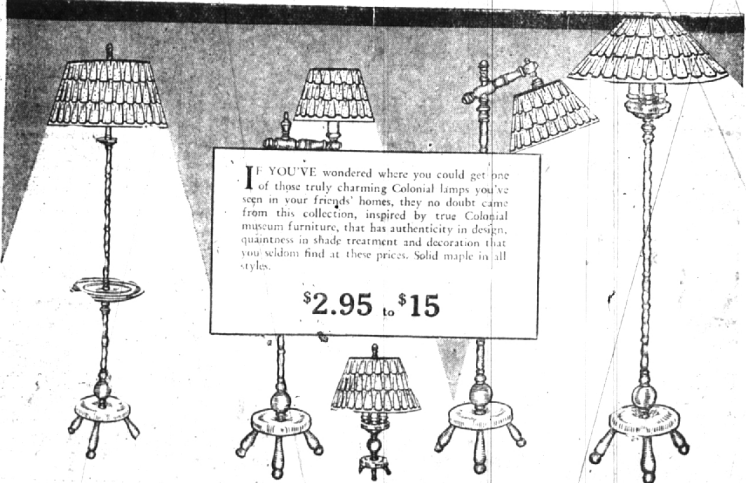
A Distinctive Early American Pattern With Setting for Eight

\$8.95

A copy of Wedgwood China. In fifty-five pieces including plates, cups and saucers, sugar and creamer, bowl, bread and butter plates, platter, fruit dishes, bowl, two vegetable dishes and oatmeal dishes. Two floral patterns on an ivory ground for your selection.

CHINA—FIFTH FLOOR

Maple Lamps to Grace the Home



IF YOU'VE wondered where you could get one of those truly charming Colonial lamps you've seen in your friends' homes, they no doubt came from this collection, inspired by true Colonial museum furniture, that has authenticity in design, quaintness in shade treatment and decoration that you seldom find at these prices. Solid maple in all styles.

\$2.95 to \$15

RADIO SERVICE

We Service All Makes
Car Radios A Specialty

GUARANTEED WORKMANSHIP

Leonard Electric Co.

162 W. MAPLE PHONE 223

Gunningham's DRUG STORES

FOR LOW PRICES

DRUGS

100 Bayer Aspirin 43c

75c Baume Bengue 46c

25c Carter's Liver Pills . . . 16c

\$1.25 Carlsbad Sprudel Sails 79c

40c Castoria (Fletcher's) . . 24c

25c Cascarets 16c

75c Dean's Kidney Pills . . . 44c

85c Dextrin Maltose 54c

25c Ex-Lax 16c

50c Armand Face Powder . . 34c

40c Bost Tooth Paste 22c

75c Barbasol, jar 47c

50c Calox Tooth Powder . . . 29c

75c Fitch Shampoo 39c

25c Golden Glint Tint 18c

\$1.00 Hopper's Restor. Cr. . 67c

60c Italian Balm 39c

50c Hind's Almond Cream . . 32c

\$1.00 Kurlash 63c

\$1.00 Lady Esther Powder . . 67c

50c LYON'S TOOTH POWDER 29c

50c IODENT TOOTH PASTE 26c

LARGE OVALTINE 49c

\$1.25 IRRADOL A MEDIUM 83c

\$1.25 S.M.A. POWDER 79c

35c VICK'S SALVE 22c

NEW DOG BOOK

Free!

IT'S YOURS FOR THE ASKING

GLOVER'S New Dog Book is the most complete and instructive manual on Care, Training, Feeding, etc., ever produced. Contains many interesting

Ask for Your Copy Today at any Gunningham's Drug Store

A LOVELY POWDER

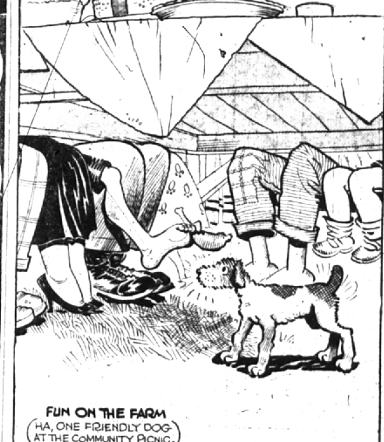
In fascinating Bouquet

Do try this wonderfully soft, clinging powder, you will love its exquisite fragrance and fragrance.

Created in six flattering shades

\$1.00 and \$2.00

Barbara Gould



FUN ON THE FARM
(A ONE FRIENDLY DOG AT THE COMMUNITY FARM.)

New Ford V-8 Cars On Display Saturday

Ford V-8 cars for 1936 were shown for the first time Tuesday to Ford dealers at group meetings in the 34 Ford branch cities in the United States and seven in Canada. The new cars will be publicly shown for the first time Saturday by dealers.

Body lines which strike a new note in conservative streamlining, a new treatment of the interior, three important refinements in chassis engineering summarize the principal improvements. There are radical changes. The 88-horsepower V-8 engine, of which more than 2,000,000 are now in operation, is unaltered.

Of the three principal chassis improvements, one—improved steering—is aimed at greater ease and safety of operation. Two others tend to greater comfort and the use of new steel wheels which lessen the unsprung weight and thus provide greater riding comfort. The other is an improved transmission using quiet helical gears—formerly used only in forward speeds and reverse.

A new front-end treatment gives the front of the car a rounded lower edge which blends with the streamlined curve of the inner portion of the fenders, the grille contributes a new note of smartness.

Streamlined Fenders Fenders are streamlined, a wide inward flare giving them an imposing appearance. Louvers are of new design. Horns are now recessed in the fender aprons back of small round grilles beneath the streamliners.

The welded steel body is low and wide, with flowing rear quarter lines. Finish is a Ford-developed baked enamel. There are five body colors, Washington blue, gray, vineyard green, cardinal tan, gunmetal and black, of which the first two are new. De luxe body types are available in any of the five colors, with fenders matching and wheels of new designs in a harmonizing color. Cars without de luxe equipment come in black or gunmetal, with fenders matching the body color and black wheels.

Thirteen body types are available, on with de luxe appointments and three without. These are:

De Luxe: Three-window coupe, five-window coupe, roadster with rumble seat, phaeton, cabriolet with rumble seat, convertible sedan, Tudor sedan, Fordor sedan, Tudor touring sedan and Fordor touring sedan.

Without de luxe equipment: Five-window coupe, Tudor and Fordor sedans, especially luxurious in the de luxe types, reveal a distinctively modern treatment. The color motif is a rich gray, with