

# Clubs and Personals

## 200 KIDDIES ATTEND 1ST CLUB MEETING

New A. A. U. W. Recreational Project Opens in Community House

Approximately 200 children attended the opening meeting of the Saturday Club at the Community House Saturday afternoon to participate in its recreational activities. The club is an organization sponsored by the Birmingham Branch of the American Association of University Women for children between the ages of eight and 10 years. Mrs. Robert P. Watt is general chairman of the committee in charge.

Arrangements will be made Saturday to divide the children into two groups, the younger members coming from 1:30 through 3:30 P. M., and the older group from 3:30 to 4:30. The first hour and one-half for the first division will be devoted to craft work, and the last hour and one-half in the later period will be used for the same purpose. The groups will come together for a joint gathering in the auditorium for the singing of popular songs. Stories and songs of cowboy life will also be included on the program.

According to a tabulation made by the committee under Mrs. Watt, there are 450 children in Birmingham between the ages of eight and 10 years.

The object of the club is to give children experience in a variety of activities for the leisure hours.

## A Wee Sub-Deb And Pet



Sitting demurely in the picture above, with her recently acquired pet, is Alice Ann Giffels, daughter of Mr. and Mrs. Louis J. Giffels of Kennesaw road.

## Three Club Groups To Hold Meetings

Three departments of the Birmingham Women's Club will meet Tuesday at the home of members. Mrs. Floyd A. Franklin of South Bates street will be hostess at a dessert luncheon to members of the American home department. Mrs. H. T. Ellerby will be in charge of the program, with Mrs. John S. Lambie as the speaker. Mrs. Lambie will discuss "Religion in the Home."

Members of the art department will be guests at a studio tea, at which Mrs. J. E. Welch will be hostess. Her studio is in the Theater Building. Mrs. T. B. Smith of McHugh drive will entertain the literature department at the home. Mrs. George E. A. Hallett and Mrs. H. H. Gilbert will be in charge of the program.

## Date Set For Dance To Aid Children's Milk Fund

Miss Betty Lou Myers is general chairman of a dance to be held at the Community House Saturday evening, Jan. 26, under auspices of the Birmingham Service League.

The dance will be one of a series sponsored by the League for the benefit of a fund which is providing milk for 17 undernourished children.

Invitation is extended to all young people in Birmingham, in both the married and unmarried groups, to attend the dance.

Assisting Miss Myers on the committee are Miss Ruth Pratt, in charge of publicity, and Miss Eleanor Henshel, chairman of tickets.

## Mother's Cook Book

HINTS FOR HOMEMAKERS

Try adding a bit of grated lemon rind with the usual seasonings for pick-up pie. It gives an added flavor.

In every well-furnished kitchen one should find accurate scales and measuring utensils. A pair of shears to be used only in the preparation of food; and since the success of a dish depends on timing its cooking or baking, a reliable clock.

When cooking squash, wash and scrub it well, then cut into convenient sized pieces to go into the steamer. Cook until tender, then scoop out the squash, mash, season with butter, cream, salt and a grating of orange peel. A small amount of sugar adds much to various dishes, fresh vegetables, meats and soups. To accentuate the various flavors, binds them into a homogeneous whole and enriches the color.

When starting out for a day of shopping buy or carry a small package of your favorite candy. When feeling ready to drop with fatigue eat a piece of candy and see how quickly you are revived. It will give you plenty of energy to carry on. Sugar is one of the world's greatest energy foods. The hundreds of pounds of candy that were consumed by Admiral Byrd's men during their long Antarctic winter will testify to its value.

A Turkish towel or piece of heavy outing flannel placed on the draining board or in the bottom of the dishpan when washing delicate china will save many a treasured dish from breakage. The habit of so many dish washers is to place half a dozen fragile cups together in a pan of water and while floating around the handles are sure to be knocked off or cracked. With china as expensive as it is today, we need to use great care in handling it.

Add a few drops of lime juice to honeydew melons when serving.

**CHRIST CHURCH CRANBROOK**  
Sunday, Jan. 20  
William Hall Miner, organist and bell master  
Organ Meditation during Vespers, 4 P. M.  
Prelude on the Tune "Olivet" Matthews  
At Evening Nordman

**Carillon Recital, 5 P. M.**  
Chorale, Ein Feste Burg, Bach  
Confidence Mendelssohn  
Killarney Bulfe  
Sun of My Soul Ritter  
Lord Dismiss Us With Thy Blessing Sicily  
Alleluia! Song of Gladness Haydn  
Minuet in G Beethoven  
Brookside Church Song

## WITTY KITTY

By NINA WILSON PUTNAM



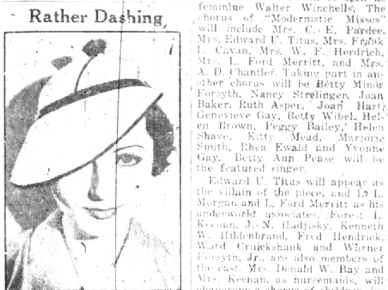
The girl chum says that people who spend too much time waiting for their ship to come in will never learn to paddle their own canoe.

## Cast As Woman Mayor, Man Sets Stage For Farce

When a man masquerades as a woman mayor, the stage is set for action, and almost anything might happen. There is plenty of action centering around this complication in the plot of "Crazy Politics," the three-act musical farce sponsored by the League of St. James' Women, to be presented at the Community House next Tuesday and Wednesday at 8 P. M.

With D. S. Haster as the newspaper reporter who stumbles into the role of "woman mayor," and Mrs. John H. Gordon as Sally Carter, a newspaper woman in love with him, the plot gallops along in a farcical way to the climax.

Other important feminine roles are taken by Mrs. Charles E. Asper, Mrs. Lane Bishop, Mrs. Warner L. Forsyth and Mrs. D. W. Bay. J. Russell Hughes will be seen as Jim Foley, chairman of the Post.



The gala opening of California's new Santa Anita race track seems to have influenced millinery. Geneva Mitchell, of Los Angeles, led the fashion field with this "locky" hat.

The bulk of pedaled tires, once a waste product, is now being turned into chaises.

## Garden Group Elects Officers For New Year

Mrs. Charles H. Welch, Jr., was elected to serve again as president of the Birmingham Branch of the Women's National Farm and Garden Association, at the annual meeting held Monday at the Community House.

Mrs. Sam M. Garber was elected first vice-president; Mrs. Theodore S. W. Meyer, second vice-president; Mrs. E. B. Caldwell, recording secretary; Mrs. Robert Essig, corresponding secretary, and Mrs. Ralph I. Corryell, treasurer. The meeting followed the annual luncheon.

## A Personal Note To Men:

Are You Over 40?  
Do You Feel That You Are Losing Your Grip On Things?  
Do You Worry About Your Job?  
Do You Feel That Everything You Do Is Wrong?

Well if you do—let me put you wise to something, because I want to sell you a book that is like a Bible to big-men than perhaps you chance to be—and that book is—

## Strategy in Handling People

By WEBB AND MORGAN  
and sells for only  
**\$1.00**

This book is worth \$1000 of any man's money and I will cheerfully refund the price of the book if you can say that you did not find some material that would mean something to you.

ALFRED J. LABELLE

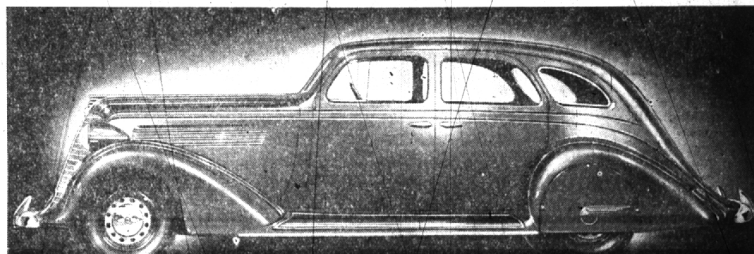
## LA BELLE'S

Birmingham's Shop of Books and Gifts  
137 W. Maple Phone 1225

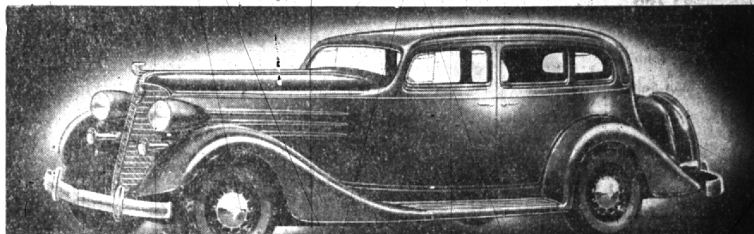
# DOUBLE ANNOUNCEMENT

## NASH & LAFAYETTE

### NEW 1935 MODELS HAVE ARRIVED



1935 AEROFORM NASH  
BEAUTY • POWER • ECONOMY • RIDE



1935 LAFAYETTE  
FINE CAR OF THE LOW PRICE FIELD

See Them At

NASH PRICES

**\$895**

To \$1290

F. O. B. FACTORY

**BIRMINGHAM AUTO SALES, Inc.**

912 S. WOODWARD

LaFAYETTE PRICES

**\$585**

To \$750

F. O. B. FACTORY

**D.J. Healy SHOPS**

WABEEK BLDG.

# January Clearance

## in our Birmingham Shop

## Sweaters

Single and Twin Sweaters  
Values up to \$5.95—

**\$1.59 to \$2.95**

## Blouses

Jersey Blouses formerly  
selling up to \$3.00—

**\$1.95**

## Skirts

Formerly as high as \$7.95—

**\$2.95 to \$3.95**

## Knitted Dresses

Special for clearance at—

**\$2.00 to \$5.00**

Our Entire Line of Dresses at Special Reduced Prices