

MORE HEAT!

OUR HIGH GRADE COAL and COKE

WILL GIVE IT TO YOU

PHONE 111

LAWSON-ERB

BUILDERS' SUPPLIES LUMBER CO. LUMBER ROOFING
624 Forest St.

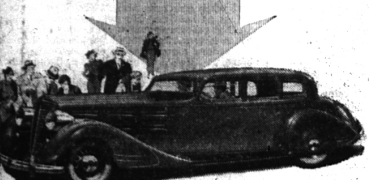
BEET SUGAR

MADE IN MICHIGAN
The best for every household use

FOR SALE BY GROCERS EVERYWHERE

IN 3 MONTHS

New 1934 Nash Betters
Entire Production of 1933 Models!



NASH is shooting ahead faster and faster—every day a greater favorite—as an aftermath of the Automobile Shows in New York, Philadelphia, Boston, Cleveland, Cincinnati, Milwaukee, Detroit, Chicago, and other cities. One record after another. Success is pyramiding!

Biggest November since 1929! Biggest December since 1926! Biggest January since 1929! In three months alone, shipments of 1934 Nash cars have passed by 20% the total year's production of Nash 1933 models!

Thousands are saying of the 1934 Nash... "That's the car I want to own!" And they're saying it with orders!

They want a Nash for the smartness of Nash "Speedstream" style. For the skill of Nash engineering. For the snap and dash of Nash Twin Ignition valve-in-head performance. For the luxury of Nash coachwork. For the comfort of Nash riding quality—with or without individually-sprung front wheels (optional at slight extra cost).

You'll know quick enough why Nash is clicking if you'll just take a trial drive in a 1934 Nash. You'll know it every time you sprint around cars in traffic. You'll know it every time you climb a hill. You'll know it every time you go around a curve. You'll know it every time you apply the brakes. Good? It's great! The proof is in a ride!

1934 TWIN IGNITION VALVE-IN-HEAD NASH

Big Six, 110' Wheelbase, 80 H. P. . . . \$775 to \$865
Advanced Eight, 121' Wheelbase, 100 H. P. . . . \$1065 to \$1145
Ambassador Eight, 133' Wheelbase, 125 H. P. . . . \$1275 to \$1365
Ambassador Eight, 143' Wheelbase, 125 H. P. . . . \$1320 to \$1395
(All Prices f. o. b. Kalamazoo, Mich.—Special Equipment Extra)

Birmingham Auto Sales 912 S. Woodward Ave. PHONE 6
FULL-SWING PRODUCTION ASSURES REASONABLY PROMPT DELIVERY
Tell Your Merchant You Saw His Advertisement in THE ECCENTRIC

GREEN BUSY ON ZERO DAYS

Answer Nine Alarms From Thursday To Saturday, Setting New Record

Answering nine alarms in three days, Birmingham firemen during the zero and sub-zero weather last Thursday, Friday and Saturday set a new record for the number of major fires extinguished in the same period of time. None of the fires caused serious damage.

In several instances, large deposits of soot which had accumulated in pipes and chimneys during warmer weather and ignited when furnaces were opened wide again, were responsible for the blazes, according to Fire Chief Vernon W. Griffin.

The first fire Thursday afternoon was at the home of Norman Burrell, 119 1/2 Fourteen Mile road, where sparks from the chimney ignited the rear of the roof, part of which fell in before the fire could be extinguished. Damage was estimated at \$30.

Matches Ignite Coat
Early Thursday evening, matches in the pocket of a coat in a closet at the home of F. C. Newell, 284 Larchlea drive, set fire to the coat in an unexplained manner. Damage was confined to the coat.

Wiring in a Sedan Belonging to Assistant Postmaster T. C. Hoteling was burned Thursday night when a short circuit caused an explosion of alcohol from the radiator. The car was parked at Brown and Pierce streets.

Damage estimated at between \$20 and \$30 was caused to the home of L. W. Spickard at 508 Linden road early Friday morning by fire caused by a defective fireplace. Starting in the flooring, the flames ate up through the partitions around the fireplace.

Flooring in the home of Frank Tichman, 791 Purdy street, was damaged by fire Friday morning when Mr. Tichman's mother attempted to thaw out frozen water pipes in the kitchen. Several cans of paint caught fire and added to the difficulty of extinguishing the blaze.

Chimney Sparks Blamed
Sparks from a chimney on a neighboring house fired the roof of the home of J. J. Towar, 841 Harmon avenue, late Friday afternoon, burning a large hole before it was discovered. Damage was placed at \$15.

Chimney sparks were also blamed for a roof fire about an hour later at the home of Roy Collins, 2917 East Maple avenue. Part of the attic was damaged by the blaze, which was almost entirely extinguished when firemen arrived.

When R. F. Smith, 1211 Humphrey avenue, attempted to thaw out the motor of his automobile with an electric heater Saturday morning, the car caught fire, burning the wiring.

The wiring was also burned on a truck at Woodward and Maple avenues Saturday afternoon when the motor backfired.

'Green Stockings' Applauded By 700

Success Of Baldwin Dramatic Club Play Augurs Well For Future Presentations

Nearly 700 persons witnessed the matinee and evening performances of "Green Stockings", a three-act comedy presented by the Baldwin High School Dramatic Club in the school auditorium Wednesday afternoon and Thursday evening of last week.

Wednesday's performance, which was given especially for school children, attracted over 250 students, while the evening presentation on Thursday drew a crowd of 400.

Both Charles Dean and Ralph DuBois, neither of whom had leading roles, were outstanding in their parts. The remainder of the cast, including Robert Mix and Joanne Hart who were cast in the principal roles, also performed in such a manner as to make the play an undoubted success.

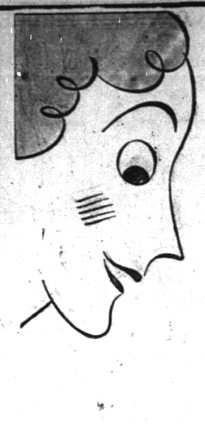
More than \$100 was taken in from admissions, officials of the club feel that it will be financially safe to plan another play in the near future.

Much of the credit for the presentation's success goes to Miss Ruth Hull, one of the club's advisers, who directed the performance.

The majority of the profit will be used to help defray the expenses of the Junior-Senior Prom, which is to be held in the spring.

100 PLAYERS IN CAGE TOURNAMENT AT BARNUM
According to Coach Ernest Engel, athletic coach at Barnum Junior High, the largest number of boys ever to turn out for inter-class basketball at the school are now playing games twice a week. The 100 boys participating are divided into 12 teams. Six games are played each week, three on Tuesdays and three on Thursdays.

UTILITIES TO BE DISCUSSED
Fred W. Johnson of Adams road, president of the Birmingham National Bank, will lead a discussion on "Public or Private Ownership of Public Utilities" at the meeting of the Methodist Men's Forum in the Community House at 10 A. M. Sunday.



LEND AN EYE TO THESE LENTEN SPECIALS!

Yes—lend an eye to these Lenten specials and you'll wend your way to the nearest Kroger Store. That is—you will if you are really interested in serving Lenten meals that will bring approving comments from your family and at the same time are decidedly kind to your purse. And even though you do not observe Lent, you'll find some appealing suggestions for menu variations in the foods being featured at Kroger Stores this week—at decidedly thrifty prices. Why not make out your shopping list right now from these offerings?

MICHIGAN MAID ROLL

BUTTER

IN KEEP SWEET PACKAGES LB. **25c**

Country Club Print - Lb. 28c

STRICTLY FRESH

EGGS

DOZ. **19 1/2c**

PINK ALASKAN

SALMON

2 CANS FOR **25c**

LIGHT MEAT

Tuna Fish

CAN **10c**

Fould's

MACARONI SPAGHETTI **2 PKG. 15c**

MEAT SALE!

Standing
Rib Roast 6th and 7th rib lb. **15c**
HADDOCK FILLETS lb. **15c**
WHITE FISH lb. **18c**
FANCY OYSTERS Pt. **25c**
PORTERHOUSE STEAK—Choice steer lb. **25c**

Leg O Lamb lb. **22c**
Boneless rolled lb. 19c Fresh Ground
Veal Roast lb. 19c Hamburger lb. 25c

Virginia Style—Boneless Baked Hams lb. 35c Whole or half

SELECTED **Chickens** FANCY FATTED FOR BAKING OR STEWING lb. **22c**

Betty Crocker Gold-N-Sno Cake
Three delicious golden layers—orange flavored . . . topped with cocoanut icing . . . IT IS GOOD . . . made with GOLD MEDAL "KITCHEN TESTED" FLOUR. EA. **39c**

SALADA TEA 1-lb. Pkg. **35c**
Tea fresh from the garden.

Lux Soap 3 cakes **17c**
Lux Flakes 2 Sm. Pks. **19c**
LARGE PKG. 24c



Kroger Features



Pimento—Valencia—Brick—American Kraft Cheese 1/2 lb. pkg. 2 for 29c
Country Club Macaroni, Spaghetti or Noodles 2 pkgs. **13c**
Keg Herring 9 lb. keg **79c**
Palm Brand Shrimp can **10c**
Beechnut Spaghetti 2 pkgs. **15c**
Country Club Salad Dressing jar **25c**
Mother Ann Codfish box **27c**



Avondale 2 No. 2 1/2 cans **25c**
Peaches
Country Club Chili Sauce 8-oz. bottle **10c**
Country Club Tomato Juice 4 cans **25c**
Maraschino Cherries bottle **10c**
Country Club Coffee lb. **24c**
French Brand Coffee 2 lbs. **45c**
Jewel Coffee lb. **19c**
Margate Tea 1/4 lb. pkg. **10c**

OUR BAKERS WORK MAGIC

with flour, shortening, spices and icing . . . all of which means that you can **DEPEND** on Kroger cakes and cookies . . . **FRESHNESS** is guaranteed via our daily store-door delivery.



Pan Rolls pkg. **6c**
Chocolate Pecan Cookies lb. **19c**
N. B. C. Cookies—Mello Sandwich lb. **29c**

Gold Dust Powder 3 pkgs. **10c**
Wyandotte Cleanser pkg. **8c**
Royal Dessert 4 pkgs. **95c**
Mazola Oil pt. can **19c**
Wheatena pkg. **24c**
Michigan Sugar 10 lbs. **47c**
Kellogg's Whole Wheat Biscuit pkg. **13c**
Dried Prunes 4 lbs. **25c**
Minute Tapioca pkg. **13c**
Baker's Chocolate 1/2 lb. bar **19c**
Macaroni or Spaghetti lb. **10c**
Raisins 4 lbs. **29c**
Pop Corn—Golden Harvest pkg. **5c**



Now You'll Want More Fresh Fruits & Vegetables

BANANAS LB. **5c**
HEAD LETTUCE LGE. **7c**
BRUSSELS SPROUTS 2 QTS. **25c**
CAULIFLOWER LGE. **14c**
New Potatoes 4 lb. 19c Florida Oranges 6 lbs. 25c
Candy Sweets 4 lb. 19c Delicious Apples 4 lbs. 25c
Grapefruit, Lge. 4 for 15c

All Prices Subject to 3% Sales Tax

KROGER STORES