

MAPLE CAGERS EASY WINNERS

Put Up Best Game of Year To Date St. Mary's, 25 to 11

By DEAN BEIER
BALDWIN HIGH SCHOOL'S basketball five experienced little difficulty in defeating St. Mary's of Orchard Lake, state Class C champion for the past two years, Friday evening on the Baldwin floor. The Maroons outscored the Lakemen in every period except the first, and when the final gun sounded they were on the long end of a 25 to 11 score.

Grosse Pointe Five Plays Here Friday

Grosse Pointe High School, an age-old foe of Baldwin High in both basketball and football, will send its first and second basketball teams to Birmingham Friday night to play the Maple varsity and reserve squads. The preliminary is set to open at 7 o'clock.

According to the eligibility lists received by Coach Franklin Whitney, the millionaires will be able to place an entire team of veterans on the floor for the first team game, should their coach so choose.

Baldwin cagers have won their past three contests and now have five wins to their credit, as against three defeats.

clean play, committed only four personal fouls. Baldwin, just a little chumier, was guilty of seven.

Kenneth McBride, forward, and Fred Cushing, guard, were the Baldwin stars. Although Cushing actually scored only two points, he was instrumental in the scoring of many more. Several times the ball came into the Maroons' possession by virtue of Cushing's taking it off the backboard after a St. Mary's shot.

McBride, who two weeks ago against East Detroit set a scoring record for this season with 15 points, again led the Maple offense, this time with five field goals, or 10 points.

Ed Ostrowski, captain and left forward for the Eagles, accounted for eight of his team's 11 points with four field baskets. He was second to McBride in high scoring.

Never during this season has the play of the Maples been as smooth as it was Friday night. Throughout the entire game the St. Mary's five found it almost impossible to penetrate the Baldwin defense, and in the last half the visitors had to revert to almost entirely to long shots in their scoring attempts.

In the first quarter, each team scored two field goals and a free toss. Ostrowski's held goal was the only Eagle score in the second quarter, but four Maple men, Cushing, McBride, Fred Schwarze and Tony Freeman, each accounted for a two-pointer, placing the score at 13 to 7 for the Maples at half time.

The Eagle captain also did the only St. Mary's scoring in the third

Baldwin High School's Mid-Year Graduating Class



These are the members of the mid-year graduating class at Baldwin High School who will receive their diplomas at commencement exercises tonight.

CRANBROOK COURT TEAM BEATS HOWE

Cranbrook Show Big Improvement In Downing Indiana Cadets, 38 To 26

BARNUM'S HONOR ROLL SETS MARK

39 Names Make List Longest In History: 28 Students Cited At Adams

and fourth quarters by netting a field goal in each period. McBride sank two field goals in both the third and fourth periods, while Bob Mix and Freeman also added two points apiece to the Baldwin score in the third frame.

The lineups follow:

Birmingham	G	F	T
Schwarze, rf	2	1	5
Phillips, lf	0	0	0
Forester, rf	0	0	0
McBride, lf (c)	5	0	10
Mix, c	1	0	2
Boynon, c	0	0	0
Cushing, rg	1	0	2
Miller, rg	0	0	0
Freeman, lg	3	0	6
Harris, lg	0	0	0
Totals	12	1	25
St. Mary's	G <td>F<td>T</td></td>	F <td>T</td>	T
Rybiawick, rf	0	1	1
Ostrowski, lf (c)	4	0	8
Krajewski, c	0	0	0
Ostrecki, rg	0	0	0
Samary, lg	1	0	2
Ziminski, lg	0	0	0
Totals	5	1	11

Referee—Peel, Michigan State Normal College.

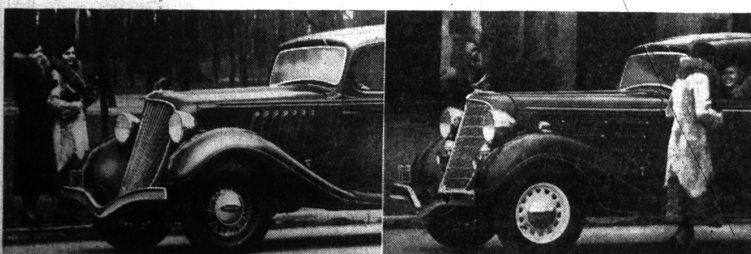
points, made on seven field goals and a pair of free throws. He was followed by Metzger of Cranbrook and Leche of Howe, who scored 15 points each.

The lineups follow:

Cranbrook	G	F	T
Metzger, f	7	0	14
James, f	2	0	6
Lippincott, g	2	1	6
Keppel, g	0	0	0
Van Horn, f	0	0	0
Beaudette, c	0	0	0
Foster, f	0	0	0
Williams, g	0	0	0
Totals	18	2	38
Howe	G <td>F<td>T</td></td>	F <td>T</td>	T
Norris, f	2	0	4
Ross, f	0	0	0
Leslie, c	7	0	14
Penn, g	0	0	0
Brinker, g	1	0	2
Gould, f	1	2	4
Snyder, g	0	0	0
Totals	11	4	26

Referee—James, Blue and Gray center, was the high scorer with 16.

Thank you, BIRMINGHAM.....



(THE TERRAPLANE "6" SEDAN) (THE HUDSON "8" COUPE)

You have taken to the new Terraplane "6" and Hudson "8" just as we thought you would!

One brief week ago we announced that we would start selling the new Hudson and Terraplanes.

Sell was the right word! They've been going like a Terraplane swishing up Pike's Peak!

It seems that only you have to do is demonstrate these cars and they do their own talking—in their own quiet, convincing way.

But no wonder! Terraplane will out-perform any other car—but one—its big brother, Hudson.

And Hudson will out-perform any other eight regardless of price.

Reason? Unit-engineering—the exclusive Hudson principle that in a

single year brought to the Hudson banner 72 A. A. A. records for hill-climbing, speed and ruggedness.

What's more, these new Terraplanes and Hudsons offer you advanced streamlining—Adelflex Independent Springing, patented Splayed Springs, four big Road Levelers—year-round draftless ventilation—built-in Luggage Vestibules in the rear—and a hundred and one other advanced motoring features.

Won't you drop in and try out the 1934 Terraplanes and Hudson?

If your present car needs service of any kind you'll do well to get acquainted with our new Service & Parts department.

WINNINGHAM & KLINGENSMITH INCORPORATED

467 S. Woodward Ave. Phone 306

TERRAPLANE "6"
80 horsepower... 112" wheelbase
85 horsepower... 116" wheelbase
\$565 for the Coupe

HUDSON "8"
108 horsepower... 116" wheelbase
113 horsepower... 123" wheelbase
\$695 for the Coupe
All prices, c. o. b. Detroit

STUDENT LUNCHES, DANCES, PLANNED

Smith College Alumnae To Open High School Cafeteria As Scholarship Benefit

Beginning next Wednesday, Feb. 7, Baldwin High School students will have an opportunity of obtaining light lunches in the school cafeteria, and of enjoying noon dances every day classes are in session.

The lunches are to be served and the dances chaperoned by the Smith College Alumnae Association, and the proceeds are to be turned over to the Smith College Scholarship Fund for the benefit of needy students in the Detroit area.

Mrs. T. W. Eustis and Mrs. John K. Ormond are co-chairmen of the committee in charge. Other members of the group are Mrs. Y. C. Smith, Mrs. Harold Wilson, Mrs. Carl Wronberger, Mrs. Colin Campbell, Mrs. L. I. Lodge, Mrs. Charles Davidson, Mrs. C. C. Ryan, Mrs. R. H. Kalfus, Mrs. Lewis K. Marshall, and Mrs. John W. N. Fisher.

The lunches will consist of sandwiches, milk, cocoa, fruit and other foods. The dances will be open to all students. The admission charge will be 5 cents, and piano music for the dancing will be furnished by Miss Julie Preston. Members of the Smith Alumnae group will be on hand daily in both the cafeteria and dance room. Lunches have not been served in the Baldwin cafeteria since the curtailment in the curriculum, affecting domestic science, about two years ago.

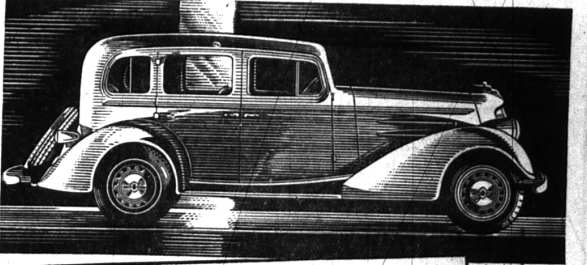
The new arrangements were approved recently by the Board of Education.

Pay For the Services You Demand
Pay Your Taxes!

Yours
AT NO EXTRA COST
EXTRA TROUSERS
DURING OUR CUSTOM-MADE SUIT SALE
FINE FABRICS—WELL TAILORED
\$27.50 to \$48.50
Men's Wear Accessories Furnishings
PECK'S Novelties Leather Goods Luggage
108 S. Woodward Phone 230

ECCENTRIC WANT ADS GET QUICK RESULTS

Announcing
THE NEW
OLDSMOBILES
FOR 1934
and the appointment of
Aldred Motor Sales, Inc.
1204 SOUTH WOODWARD AVE.
OLDSMOBILE DEALER IN THIS COMMUNITY



On Display ROOMIER, FINER, MORE BEAUTIFUL EIGHT . . . \$845
Coming Soon BIG, ECONOMICAL, ALL-FEATURE SIX . . . \$640

The new air-stream Oldsmobiles—beautiful Style Leaders—have all the talked-about features of 1934! Kneec-Action wheels, which "walk" over bumps and holes, and make back-seat riding unbelievably smooth and comfortable. Self-energizing Super-Hydraulic brakes—quick, sure, safe... a tremendous advancement over conventional hydraulic brakes. The Ride Stabilizer, which abolishes roll and sway on curves. Center-Control steering, which divorces road shocks from the steering wheel, and eliminates shimmy and wobble. Synco-Mesh non-clashing transmission—gears silent in all speeds, even first and reverse. Roomier Fisher Bodies, with the year 'round comfort of Fisher No. Draft Ventilation. 90 horsepower and 82 miles per hour in the Eight—84 horsepower and 77 miles per hour in the Six.

The new Eight is now on display at this new Oldsmobile headquarters. You are cordially invited to visit our showroom—and while you are here inspect our efficient service department, completely stocked with genuine factory parts and equipment. Our skilled mechanics are trained to help motorists of this community get the most driving economy and pleasure out of their cars.

By all means ride in—drive—the new Oldsmobile. Ten thousand words can't tell you what a ten-minute ride will show you about the car that has EVERYTHING but is not like EVERYBODY'S!

The Eight, \$845 and up, f. o. b. Lansing. The Six, \$640 and up, f. o. b. Lansing. Spare tires with lock, metal tire covers, bumpers front and rear, and rear spring covers built in all cars at extra list price.

OLDSMOBILE Style Leader 6 and 8

8 Hills Students On Semester Roll

Eight students are included on the honor roll for the first semester's work at the Bloomfield Hills School on Vaughn road.

Bill Bowden and Susan Hartman won high honors, having as many marks below A as B, with no marks below B; Bob Luce, Charles Matheson, Annette Lanning and Virginia Bird and Betty Linton were given honorable mention, with a semester average of B.

WE HEARD IT SAID BY—
Patrolman Sam Stinson, Birmingham police department. "There are more dogs in this town than there are people."

SEZ YOU Answers

- 1. False. Kabu. 2. True. 3. False. New York City. 4. True. 5. True. 6. False. Of North Carolina. 7. False. Transpoo. 8. False. 1931 statute number. 9. False. Michigan. 10. True.