

Children come into our lives as little mounds of future men and women. As they eat of the food we prepare for their bodies, so do their minds consume the food of example and desire that we conscientiously or unconsciously prepare for them. Do we prepare good diets for both body and mind?

The Daily Eclectic

NRA PART TWO

FIFTY-SIXTH YEAR—NO. 26

BIRMINGHAM, OAKLAND COUNTY, MICHIGAN, THURSDAY, OCTOBER 5, 1933

\$2.00 PER YEAR—SINGLE COPIES 5c

Did My Heart Ache
to see an old car smash into a big new car—right here in Birmingham?

Good Insurance protects you in case of accidents that come so unexpectedly.
LOW RATES
RICE A. HOWELL
General Insurance
Wabok Bldg.
Phone 328-J

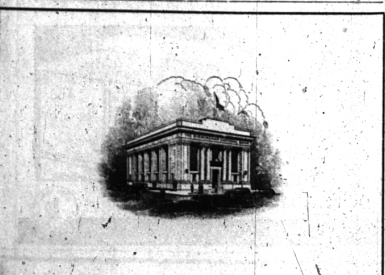
FOR SALE
A very attractive English home on a beautifully landscaped lot. Exceptionally well built house with Indiana limestone exterior and fine interior. Seven bedrooms and three baths. Beautifully landscaped garden. System installed under lawn. If you are looking for a quality home, this is it. \$22,500 with \$3,500 down. \$1,000 a month. Call 2454 for appointment.
Early American home in Birmingham. Beautifully landscaped. Every room is to be appreciated. Every must be seen to be appreciated. \$10,000. \$1,000 down. \$100 a month. Call 2454 for appointment.
We have several nice three bedroom and four bedroom houses for rent at from \$45 to \$75 per month. Call 2454 for full information on these.
Harold Blake
2045 W. Maple Rd.
B'ham 2495

FOR RENT
We have several nice three bedroom and four bedroom houses for rent at from \$45 to \$75 per month. Call 2454 for full information on these.
Harold Blake
2045 W. Maple Rd.
B'ham 2495



PHONE for our coal truck to stop at your house with a load of the most reliable fuel that was ever delivered to your home. Don't put it off—THE PRICE ALWAYS IS HIGHER LATER IN THE YEAR. Order now and SAVE.

R.C. Moulthrop Lumber Co.
LUMBER COAL AND BUILDERS SUPPLIES
BIRMINGHAM, MICHIGAN



THIS —
bank is essentially a community bank. No single individual or group of individuals was responsible for its formation. It represents the combined effort of local men and women, together with the aid of our government.

Our stockholders list includes leading men and women who represent the business and professional life of Birmingham, as well as those who constitute that largest of all groups—the average residential citizen.

The Birmingham National Bank
Member Federal Reserve System

WELFARE LOAD HOLDS STEADY

Expected Seasonal Increase Has Not Yet Appeared, Van Camp Reports

Birmingham's welfare case load remains almost unchanged with an expected increase, normal for this season of the year, not yet asserting itself, according to a report of Gordon Van Camp, city welfare administrator.

A total of 114 families were listed on the city's welfare rolls in September, which was exactly the same number listed in August. Mr. Van Camp said. Since the first of this month, the number has dropped to 107. There were 136 cases in July.

Although the actual number of families receiving welfare aid in Birmingham is the same as that for August, the number of cases closed in August exceeded those in September. Only nine were closed in September as compared with 22 in August, Mr. Van Camp said. The 114 cases in September included seven new applications and three recurrent cases. Sixteen of the 114 families received medical aid, and all received groceries.

A new system of providing work relief instead of groceries for a certain number of welfare subjects, a system which has been in operation here for about three weeks, has proved satisfactory thus far, Mr. Van Camp said. Under this system at present, 16 welfare subjects are being provided jobs by the city. They work (Turn to Page 4, this section)

Birmingham Community House--The Old And The New

These two pictures portray the tangible growth of the Community House idea in Birmingham. At the top is a sketch of the present Community House as it stands at the corner of Bates and Townsend streets. Below is the first Community House, a building located at Bates street and West Maple avenue, recently occupied by the Y. M. C. A., but now vacant.



CLUB LEADERS PRAISE HOUSE

Community Center Lauded For Social, Charitable Efforts

The Community House as a social center, a co-ordinator of club activities, and as an aid in welfare relief efforts, has received most unlimited praise from club workers and others whose activities bring them into close touch with the House and its staff.

Following are expressions from some of these workers, issued just prior to the opening next week of the Community House roll call:
Charles J. Shain, co-director of American Red Cross work in Birmingham: "The Red Cross sincerely appreciates all the work done by everyone in the Community House toward carrying out the sewing program, as well as in the distribution of garments requisitioned by the city welfare department."

Mrs. W. S. Toothacker, president, Women's Literary Club: "The clubwomen of Birmingham are well aware of the special opportunities presented by such facilities as our Community House offer."

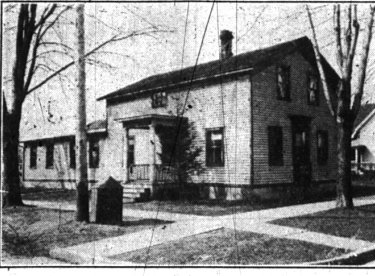
H. Kenneth Bingham, president, Birmingham Exchange Club: "The Exchange Club appreciates the service and courtesy the Community House affords its members."
Mrs. William E. Casary, president, Birmingham Branch of the American Association of University Women: "The Birmingham Community House offers an ideal indoor recreational center for all ages. It is sincerely to be hoped that sufficient funds may be raised this October not only to ensure the continuance of such facilities, but are now being offered, but to broaden the potential usefulness of the House for recreational purposes."

Gordon Van Camp, city welfare administrator: "The Community House has performed in the past and is now performing a service of inestimable value to the city welfare department. It distributes clothing on authorization of the welfare department, including all the Red Cross clothing distributed in Birmingham. It also has supplied shoes and baby clothing to needy families, including at some times in its list of beneficiaries nearly every family listed on the city's welfare rolls."

J. B. Howarth, secretary, Birmingham Rotary Club: "Because of the many activities that center in our Community House, I am dismayed when I think of the possibilities of its being closed, which is something that will no doubt happen if our people fail to come to its rescue in the drive for funds that is now being planned. This community center is a distinct asset to our city. We must not let it close, even for a short time."
Miss Blanche Breakey, city health officer: "The city health department is grateful for the excellent co-operation it has received from the Community House. It has aided considerably in furnishing transportation for indigent patients to and from clinics, and at times it has furnished supplies which, though not falling under the heading of actual welfare relief, have nevertheless been badly needed by unfortunate families."

MCCALLUM ADMITTED TO PRACTICE OF LAW
Cecil McCallum of Birmingham was admitted to the practice of law Friday by Circuit Judge Frank L. Dwyer, on motion of Edward J. Krummer, deputy county clerk. McCallum, who passed the state bar examination this fall, is the son of William McCallum of 943 East Maple avenue.

Classified Ads should be in The Eclectic not later than four o'clock Wednesday afternoon of each week. —Advs. 51*



Community House Throve On Seed Sown 10 Yrs. Ago

By MRS. R. H. MANN (Former Member, Community House Board of Directors)

Ten years ago, the Rev. Charles McCurdy, then rector of St. James' Episcopal Church, brought to the women of his congregation the idea of a Community House, and some of its possibilities. On his suggestion, Mrs. Susan French Miller, then head of the women's group in the church, gathered around her many capable assistants who gave a fair to raise the first funds for the new project.

The first Community House was at the corner of Bates street and West Maple avenue, and Mrs. Miller was the first president of the Community House Association.

Importance Not Realized
No one of that original group could possibly have had the faintest idea as to what the Community House would eventually come to mean to the people who live in and around Birmingham. For, with these modest beginnings and through these many years, Community House has been able to stand for service in all its branches.

Since there was no central meeting place in Birmingham at that time, the first function of the original Community House was of a social nature. Many of the service clubs and church organizations used the House for their regular meetings. The young people began coming on Saturday evenings to dance and enjoy social activities which theretofore had been possible only occasionally in the high schools.

Those who were sick or out of work soon found in the Community House a source of help and refuge. They found the hostesses sympathetic and ready to do anything in their power to relieve distress. For them, no hour was too early or too late to go to the assistance of someone in trouble. Those who needed work, as well as those who needed workers, began

to close the Community House to save expenses, but thanks to the valiant volunteer service of a group of public-spirited women, the House is still open, still pursuing its ideal of service.

Such loyal efforts on the part of those who have managed the Community House and those who have had the future of the institution at heart justify, it would seem, the loyal support of the entire city in the coming roll call for membership.

Subscribe to The Eclectic: \$2 per year, two years for \$3.50.

Trial Of Assault Cases Postponed

Trial of two assault cases in which the defendants are employees of rival dairy firms, scheduled to have been held in Municipal Court Tuesday morning, have been postponed to Friday, according to Justice Forbes S. Hascall, who indicated the complaints in both cases may be withdrawn before the trials are begun.

The defendants are William Button, 508 Hanna street, and George King, R. D. 4, Pontiac. Button is the complainant against King, while the complainant in the Button case is Ethan Bates, one of King's fellow employees. Button is charged with simple assault and King with assault and battery. The two were arrested about two weeks ago, following an alleged fight in Button's place of business on Pierce street, which was said to have been the outgrowth of a long feud between the men.

Another S. & B. Bargain

A solidly built stone house—five bedrooms—large living room—game room—breakfast room—porch—steam heat—two car garage. Splendidly located on the west side, in excellent condition, only four years old, this house is yours with all taxes paid at a liquidation price of **\$8,900**
SNYDER & BUCK
Real Estate—Insurance
Theatre Building
Birmingham One Four Hundred men.

A courteous, efficient service known to Detroiters for more than 75 years.

WILLIAM F. BLAKE
FUNERAL DIRECTOR
240 S. Woodward BIRMINGHAM Phone 644

EST. 1816

LET'S GO AMERICA

CHEER UP **CLEAN UP**

P & G GIANT SIZE 4 For 15c

CHIPSO 2 For 33c

CAMAY 3 For 15c

OXYDOL Large Size 21c

IVORY SNOW 13c

IVORY FLAKES 21c

KIRKS Hardwater Castile 4 For 19c

Ivory Soap Medium Size 3 For 16c

CRISCO 3 lb. cans 58c

1 lb. can 20c

THESE PRODUCTS ARE TRUE VALUE BARGAINS. BUY ALL YOU CAN NOW

The following Dealers are running this Special Sale

Shre's
Olsen's Market
Red & White Market
V. Ward Grocery

Birmingham Fruit Co.
Wm. Dayner
Brown St. Market
Uncle Jim's Place

SEZ YOU

True False Score

- Vera Cruz is the capital of Mexico.....
- "Under God the People Rule" is the state motto of Maryland.....
- Louisiana is known as the "Pelican State".....
- The Wake and Midway islands are possessions of Great Britain.....
- Candy is an Egyptian unit of weight.....
- The ruby is the birth stone for June.....
- Lu is the chemical symbol for lutecium.....
- Flint weighs approximately 164 pounds per cubic foot.....
- The earth is a sphere was one of the discoveries made by Pythagoras, Greek philosopher.....
- So-called tin cans are not made of pure tin but made of a material known as tin plate.....

TOTAL

Answers will be found on page two, this section.