

New Playground Is Mecca For Adams Ave. Kiddies

Too far away to enjoy the privileges and benefits of the various municipal or school playgrounds, children of the Adams avenue district of South Birmingham are given the opportunity for healthful fun and amateur athletics of a new playground constructed at the corner of Adams and Webster avenues.

The playground, which covers several vacant lots owned by a Detroit real estate firm, as the work of Charles H. Fancher, of 1148 Holland avenue. Mr. Fancher, the father of two boys and a girl, conceived the idea of a neighborhood playground when he observed that the nearest playground was at the Adams School,

three-quarters of a mile distant.

Teacher-Toters Built

He obtained permission from the property owners to erect a playground on the property, and began at once to execute his plan, some time before the closing of school the last semester.

Construction of several huge combination "teeter-totter-merry-go-rounds" was begun by trucking from a nearby woods several dead-and-down trees, which were cut, trimmed, and stacked. These were set on iron stakes in the ground in such a fashion that they would not only be serviceable as teeter-totters, but also would rotate. One is counter-balanced by an offset center so that one child can swing on it without another at the opposite end for a balance-weight.

Several huge timbers provided framework for a high swing. A bench rescued from some abandoned park was set in one corner of the lot and an empty oil drum was mounted to serve as a waste-basket. That the latter is suitably used is attested to by the clean nature of the playground.

Used by Hundreds

Other materials used in the construction include shovel handles, stakes, and old automobile steering wheels, all used as handles on the merry-go-rounds, iron stakes and pipe for mounting apparatus, pieces of rubber tires for upholstering, old lengths of chain for the swing, and odds and ends for various materials.

Almost all of the work was done by Mr. Fancher himself, with slight assistance in hauling the large trees. Not only his three children, but hundreds of others daily use the playground. These small future athletes are recruited, too, not only from the section in the immediate vicinity, but from across Woodward avenue and from farther north and south.

For Mr. Fancher's experiment in social work is a decided success.

Wife Of Famous Graphologist Dies

Rites Held Tuesday For Mrs. DeWitt B. Lucas, Ill For Four Months

Services for Mrs. Emilita K. Lucas, wife of DeWitt B. Lucas, nationally-known graphologist, were held at 2 o'clock Tuesday at the W. R. Hamilton funeral parlors, Detroit. Mrs. Lucas died at her home on North Woodward avenue Sunday, after a four-month illness.

Mrs. Lucas, who was 52 years old, is survived by her husband and by one daughter, Mrs. Raymond W. Walcott, of Detroit.

Burial was in Woodlawn Cemetery, Detroit.

The eccentric endeavors to reflect the best phases of the community it serves. But when it is necessary to publish unpleasant facts that others bring upon themselves it does so in a constructive and helpful manner as possible. We seek to present truthful, helpful journalism. adv.

Heads Blake Agency



Robert F. Watt

Announcement of the appointment of Mr. Watt to the management of the Harold Blake real estate agency here was made this week. Mr. Watt, who has been for 10 years in the real estate business, specializing in high grade residential property in Detroit, Grosse Pointe, and Bloomfield Hills, has been in Bloomfield Hills and Grosse Pointe real es-

American Legion Lines

News Of Charles Edwards Post No. 14 And Its Auxiliary

Despite the fact that six of the regular members were unable to be present, the Charles Edwards Post No. 14 and its auxiliary held a second prize in the contest held in conjunction with the French Festival at Rome on Labor Day.

District Commissioner Joseph F. MacGregor will convene the committee to serve as 17th district adjutant for the coming year at the next district convention to be held at the Commerce Hotel here on Sept. 23.

Plans for the administration of veterans relief in Oakland County for the coming year were formulated at the monthly meeting of the Oakland County Council of Veterans held Thursday. The work will be for the next six years.

Mr. Watt is a graduate civil engineer of the University of Michigan, class of 1918. His practical civil engineering in Michigan until 1923 and then turned to present profession.

will be in charge of the County Veterans Committee of which Mrs. Edwin H. Neff of Birmingham is chairman.

Mr. and Mrs. John B. Minton left Monday afternoon to attend the national Legion convention at Portland, Ore. Mr. Minton is the delegate from the 17th district.

Officers of the Charles Edwards Post are preparing their reports of activities during the past year, to be presented to the Post at the next meeting, Sept. 21. New officers and an executive board for the coming year will also be elected at this meeting.

Members of the Charles Edwards Post Auxiliary will hold a notebook luncheon at the cottage of Mrs. Leon Mize on Wolverine Lake next Wednesday. Directors for reaching the cottage may be secured from Mrs. Mize or Mr. Gordon L. Bailey.

Vice-Commander Lloyd L. Stanley of the state department of the Legion delivered an address outlining the general plans of the organization for the coming year at Davison, Mich., Saturday afternoon, at a luncheon ceremony at which Gov. Wilbur M. Brucker also spoke.

Vote With Confidence



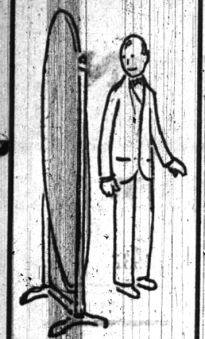
Earl L. Phillips

FOR

CIRCUIT COURT COMMISSIONER

EXPERIENCED-IMPARTIAL-DEPENDABLE

REPUBLICAN PRIMARY, SEPT. 13



MADE TO MEASURE CLOTHES

Fall Fabrics \$19.50 to \$50.00

STYLE QUALITY CORRECT FIT

PECK'S

Woodward at Maple Cleaning - Pressing Delivery Service

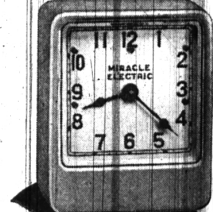
To Our Hundreds of Customers and Friends We Are Happy to Announce

RE-OPENING

with a SALE Friday and Saturday

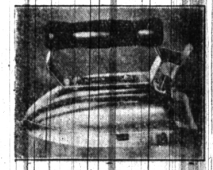
September 9 and 10, we invite you to our Re-Opening SALE! We especially invite every lady in Birmingham and environs to call and receive Absolutely FREE a mighty useful article for the kitchen. We also want you to inspect our big assortment of NEW MERCHANDISE. It's coming in daily! Featured in our Re-Opening Sale are many, many household items (all New Merchandise), and you will be more than pleased with the very attractive prices!

Here are some of the Re-Opening Days Specials!



This Beautiful **ELECTRIC CLOCK** Fully Guaranteed **59c**

Imagine, an electric clock that is fully guaranteed for only 59c. Just one of the attractive offerings for our Re-Opening Days Sale!



ELECTRIC IRON 98c

6-lb. highly nickel plated. Has patented porcelain heating element. Green handle. Fully guaranteed for one year.

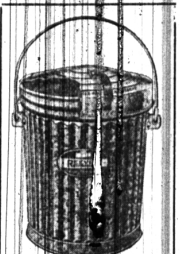
Peninsular **RAPID-DRYING ENAMEL 10c**

We have tested numerous four-hour Peninsular Enamel. All-Purpose Enamel, ideal for ease of working over the old, shiny, glass, adhesion, and treatment of color, we have found it to be the best.

Peninsular **AUTO TOP DRESSING 10c**

A top dressing for the tops of automobiles in the shape of luggage of all kinds. It does not pull or crack and will prolong the life and appearance. A top dressing can be more than enough for the average roadster car.

BELLE ISLE PAINT
Colors—\$1.49 Gallon
White—\$1.59 Gallon



GARBAGE CANS 69c

Galvanized, corrugated, 11-gallon capacity. One piece locking device.

ALLADIN CLEANER 10c and 25c Sizes **SPONGE FREE** with the 25c size. **STEP-LADDER**

A 3-step kitchen step-ladder for only 30c if you purchase three 25c packages.



Dustless MOPS
For use on hardwood floors
60c Value **39c**
75c Value **49c**

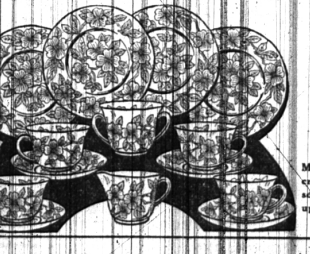


HOUSE BROOMS 19c

Made of good quality all corn, four sew, natural finish handle.

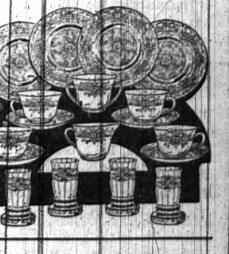
BEVERAGE SETS 79c

Each set includes four pieces. Durable, fine china. Includes a matching tray. Set of 12 pieces. (See page 2)



Your Choice of these **Luncheon and Bridge Sets 98c**

Matchless chip-proof edge in crystal and rose tint. Beautiful design. Complete set up for four persons.



McBRIDE HARDWARE CO.

150 SOUTH WOODWARD AVENUE

PHONE BIRMINGHAM 535

Light your way to BETTER BUSINESS

It isn't much use waiting for "good times" to come back. Wishing (as a lot of people have pointed out) won't bring the turn in business. But there's a mighty good reason to believe that hard work—coupled with a little initiative—will help bring things back to normal.

Whether or not the improvement in conditions is at hand, now is certainly the time to get ready for it. When the upturn comes, you should be in a position to take full advantage of it. Once things "start moving" they will move rapidly—and perhaps the day is not far distant!

Brightly lighted windows and a well-lighted store are two of your strongest assets in a bid for increased sales. Light attracts customers—it is powerfully magnetic. Well lighted windows improve the appearance of merchandise and give you a strong advantage over competitors. Add good lighting works just as successfully for the small store as for the large. Remember, too, that light is one of the cheapest things you buy. Why not enlist its aid in your behalf?

Without charge our lighting engineers will gladly measure your lighting, inspect your equipment, and make suitable recommendations.

THE DETROIT EDISON CO.