

OBITUARY

Spurs Castle For Love
Heiress Finds Romance At Sea

MRS. MAMIE TIFFANY
Funeral services for Mrs. Mamie Edna Tiffany, a former resident of Birmingham, will be held at 2 P. M. today from the Oakland Park M. E. Church in Pontiac. Burial will be in Perry Mount Park Cemetery. Rev. E. E. Robinson will officiate, assisted by Rev. J. J. Lord. Mrs. Tiffany died Monday at her home 72 Glenwood avenue, Pontiac. Surviving are the husband, Walter E.; three children, Charlotte, Leon and Beverly; her parents, Mr. and Mrs. Chaslon Gibson of Pontiac; a sister, Mrs. Fred Erickson of Detroit, and a brother, Ray Gibson, also of Detroit.

Mrs. Tiffany was an active member of the Ladies' Aid Society and the Junior Sunday School of the Oakland Park M. E. Church.

MRS. BEATRICE SAWYER
Funeral services for Mrs. Beatrice Sawyer, 25 years old, formerly of Birmingham, who died on Feb. 10 at her home, 357 Ferry street, Pontiac.

Mrs. Sawyer lived here for eight years, moving to Pontiac only recently. Her husband, Gerald Sawyer, was a landscape gardener.

Surviving are the husband; two children, Robert, five years old, and Norma, three; three sisters, Mrs. Ruth Rodgers of Berkeley, and Maxine and Marvel Blonshine of Okla. Rapids; and the mother, also of Grand Rapids.

The services were held from the Kimball-Bailey Funeral Home here. Burial was in Perry Mount Park, Pontiac.

REPUBLICANS WILL BANQUET FRIDAY

Oakland County Republicans will hold their annual Lincoln Banquet Friday evening, Feb. 26, at the Congregational Church in Pontiac, according to information given out yesterday by Clarence L. Smith, president of the Lincoln Republican Club. The leading speaker on the program will be Congressman Arthur Monroe Free, of San Jose, Cal. Mr. Free, since 1920, has represented his district in Washington, on the Republican ticket. Since 1922, however, he has been singularly honored by being the nominee of both Republican and Democratic parties in his district. About 500 people are expected at the banquet, tickets for which may be obtained here at the township offices. All Republicans are invited.

Couldn't Understand It
"What is really wrong with my husband, doctor?"
"His motor nerves are affected."
"Bat, doctor, we don't even own a car."

Goodyear Tires Are Better This Year Than Ever

"Mileage, tread-wear, value endurance—better than ever! The next best thing to Goodyear Tires is our service—you get both here. Record low prices!"
Jan W. Davis

New Lifetime Guaranteed GOODYEAR SPEEDWAY Supertwist Cord Tires

CASH PRICES

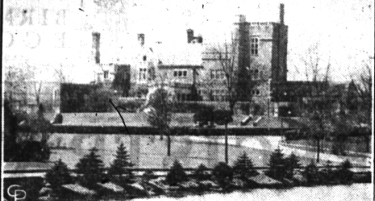
Full Overalls	Each	Each	In Pairs Tubes
29x4.40-21	\$3.95	\$3.83	\$9.11
29x4.50-20	4.30	4.17	9.11
30x4.50-21	4.37	4.23	9.11
29x4.75-19	5.12	4.97	9.14
29x4.75-20	5.20	5.04	9.11
29x5.00-19	5.39	5.23	1.00
30x5.00-20	5.45	5.29	1.14
31x5.00-21	5.72	5.56	1.16
28x5.25-18	6.15	5.97	1.02
30x3 1/2 Reg. Cl.	3.57	3.46	.86

Carefully mounted Free
Good Used Tires, \$1.50 Up : Expert Vulcanizing

WHEN IT'S AN Exide Battery
Dependable Guaranteed 13-PLATE Fits most cars
COMPLETE BATTERY SERVICE

TUNE IN WWJ
Goodyear Radio Programs
Wed., 8:30; Sat., 9:00

Open 7 A. M. to 9 P. M.
Huron Tire Co.
Phone 781 534 S. Woodward
USE OUR MODERN SERVICE
Tires, Batteries, Vulcanizing



Miss Ann Sharer, above, 19-year-old Alliance, O. heiress and niece of the late Colonel William H. Morgan, millionaire Alliance manufacturer, is to wed Theodore W. Canning, 28, Wilmington, Del. broker, as soon as the latter secures a divorce from his present wife, it has been announced. The couple, traveling through Europe together, chaperoned by a minister, were first reported married at Rome. Below is a view of the Morgan home, Castle Glamorgan, in Alliance, where Miss Sharer lived. She met Canning for the first time on shipboard and the romance developed rapidly.

Wise Birds
If unable to distinguish
Twixt growing plant and weed,
Admit the chickens for a while,
They'll settle it with speed.

Know Your Sweetheart by His Handwriting

By EDNA PURDY WALSH
Editor, Character Reading Magazine.

The Sociable Sweetheart

There are many who seek sociable in their home and friendship circles, but in general they may be retiring, and even diffident in the mania. Sociable. Ambition as to be an engineer.

Mors of a Concentrator

outside world. The slanting writer is usually more sociable away from home than the vertical or backward writer.

If the slanting writer has a long book to the beginning of the capital M or N. If the terminals of the writing are present, and not cut short, at the ends of each word, if the 's' and 'x' are open or lightly closed at the top, with fairly generous spacing between words and fairly generous margin, you may be sure the individual is sociable and expressive in the outside world, especially if the writing is reasonable.

There will be few terminals or word endings which curl back to the left in the truly sociable person, for these take time, and mean a turning back to self. The writing of the sociable man or woman will either be straight or ascending-sloping descending.

Note—Do not make final judgment until other signs in writing are studied. (Copyright)

Wrong, Also Right

The teacher was trying to impress upon her pupils the importance of doing right at all times, and to bring out the answer "Bad habits" she inquired: "What is it we find so easy to get into and so hard to get out of?"

There was silence for a moment and then one little fellow answered, "Bed."

Warning For Wives

Doctor—This is a very sad case, very sad indeed. I much regret to tell you that your wife's mind is gone—Completely gone.

Mr. Peck—I'm not at all surprised, doctor. She's been giving me a piece of it every day for fifteen years.—Boston Transcript.

Complete Fulfillment
"Poor Speeder! He died as he wished, with his boots on."
"Yes, and with one boot on the accelerator, at that."—Boston Transcript.

The white man lifts his face, The red man hit the fleeing doe, The white man hits the pace, Quebec Telegraph.

Straining the Limit
Hobbs—Do you live within your income?
Dobbs—Good heavens, no. It's all I can do to live within my credit.

Advance
New Season!



Colorful and Gay are these Spring

SKIRTS

\$225 up

High waisted "Tulip Top" and Suspender styles. Beautiful basket weaves and wool crepes. In the colors of spring . . . Red, Blue, Tan, Orange, Green, Brown and Black.

WE'LL BE READY for you . . . in fact, we are partially ready right now. Here's a quartette from among the new things for Spring, 1932! Other merchandise is arriving every day at Mulholland's



BLOUSES

\$1 to \$2.95

To ensemble. Cotton Bouclé is the fabric . . . and the new colors of Spring are in order.

The Treasure Hunt for Smartness Ends With These Spring

SWEATERS

\$1.95 up

New shades and designs that denote a new season. Carefully knit, they have leg o'mutton and small puff sleeves.

SMOCKS

New Models \$1.95 New Colors New Fabrics New Patterns

Treasures they are, that will be treasured by all who know the charm and comfort of cleverly cut smocks. They sparkle with style and color . . . fit faultlessly and are beautifully becoming.

The great American GUESSING GAME is over!



THE ARROW \$1.95
TRUMP 1
in white, stripes and plain colors

THE ARROW \$2.50
PADDOCK 2
in white and plain colors

If you're tired of trying to guess what size shirt will eventually shrink to your size, come in and see our Arrow Shirts, Sanforized-Shrunk, they're guaranteed to fit permanently—or your money back.

We have a wide variety of patterns—in neckband or collar-attached styles. We particularly recommend the Trump, of specially woven broadcloth, at \$1.95 and the Paddock, a rich broadcloth shirt, at \$2.50.

MEN'S DEPARTMENT

SALE
CHOICE FROM OUR ENTIRE STOCK
WOOL DRESSES
And for the "Miss Up to 20"
CORDUROY SUITS
Now \$3 They Were \$5.95
Mulholland's
233 North Woodward