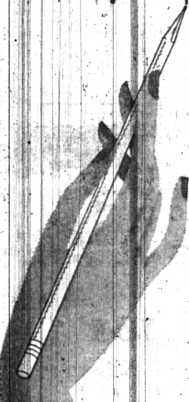


### THIS CHRISTMAS I'D LIKE AN ELECTRIC WASHER

if it's a Maytag



"I never even thought of home washing before. But I've seen how easy it is to wash in a Maytag. And it seems silly to pay someone else to do such light work."

But don't confuse "buying a washer" with investing in a Maytag. A Maytag washes clothes cleaner, faster... with less work... less wear and tear on clothes... less cost per washing... and keeps on doing that for more years. It represents a permanent investment in household equipment and its actual dollars and cents savings.

Certainly a washer is an appropriate gift—if it's a Maytag. Come in and let us demonstrate and talk terms.

**THE MAYTAG COMPANY**  
Manufacturers  
NEWTON Founded 1893 HOWA



**WOLVERINE WAREHOUSE STORE, Inc.**  
Phonix: Birmingham 874 and Pontiac 2-2536  
Birmingham Show Room in the Times Hardware Store  
191 South Woodward Avenue  
Any Maytag may be had equipped with gasless Multi-Motor

### VILLAGE MAY ASK \$5 WATER DEPOSIT

Parry Introduces Measure To Prevent Loss From Unpaid Bills; Action Deferred

An ordinance amendment which would require the occupants of homes owned by other persons to deposit \$5 with the village treasurer before their water would be turned on was introduced to the Commission Monday night by Manager James W. Parry, who declared, however, that he was "not prepared to urge adoption" of the measure.

The amendment is designed to prevent financial losses to the village growing out of tenants leaving unpaid water bills on moving out of their houses. The deposit would be used to offset such an unpaid bill, the average of which is about \$10.

The amendments would not require a deposit from persons living in their own homes. While he introduced the measure as an indication that the problem of unpaid water bills was being given serious attention, Mr. Parry expressed dissatisfaction with it on the grounds it would entail considerable bookkeeping, since it would require a strict differentiation of tenants and home-owners.

No vote was taken on this proposal, and it was tabled until a future meeting when it may either be adopted or a substitute introduced.

(Concluded 6 from Page 1)

rises, with anything like the strength and rapidity of the last five years, the circulation of the present year will be surpassed in 1932.

#### Circulation Shows Big Gain

How the intellectual ferment incident to a prolonged period of unemployment increases demands on a public library is illustrated by the following figures. In 1928, the circulation was only 64,000. In 1929, the year of the stock market crash, it rose to 82,000. By 1930 "the figure had climbed to 95,000, and by 1931 had reached a new "high" of 103,000. The estimate for 1932, based on all but a few weeks of the 22 in the year, is 110,000.

Causes of the increase not only include the intellectual ferment incident to a period when widespread unemployment results in an examination of our whole social philosophy, but may also be accounted for by the need of unemployed men and women to find solace and mental tonic somewhere and by the vastly larger margin of time available for general reading.

Friends of the Library feel that in a time of distress the library has a definite place not only for the building of knowledge, but in the mitigation of the misery of having nothing to do, no place to go, no alternative to worry and brooding.

#### Tax Cut Essential

"With only about 10 per cent of the taxes collected, the library, of course, must take its proportionate share of the cut with other departments of the village," said Mrs. H. H. Wellman, president of the Board of Trustees of Baldwin Public Library.

"The Village Commission is uniformly friendly to the basic aims and ideals as typified by the institution of which everybody in the community takes pride. But it can promise no more than barely enough for building and grounds maintenance and the few absolutely necessary salaries until a marked increase is noted in the payment of taxes.

"This being the case, the board feels justified in appealing to the public spirited men and women of Birmingham to give whatever they can to preserve the library from becoming antiquated by inability to purchase new volumes. New books, whether dealing with fact or fiction, are absolutely essential to the continued vitality of a library.

"Now, as never before, patrons are asking for the latest word on the multifarious problems confronting us. Sociological and ethical standards are in a flux. The novel, history, book of economics or discussion of business that offers anything constructive is eagerly sought and read.

**Library in New Role**  
"Never before was there such need for the fact, opinion and sound information to be found in books. Never before was knowledge so necessary. The public library—in addition to the important work it does in the schools—is basically a continuation course in adult education. In times of public distress it becomes, in many instances, the one place in which the unemployed can forget their troubles while building up their minds. In times like these the library rises above its former role as an educational institution to an even higher place as a great social service agency in ameliorating misery.

"It is on this ground that I ask the public to rally to the support of Baldwin Library. In this community of 10,000 inhabitants, but less than 5,000—or more than half the population—are registered as library patrons. I ask as many as possible to register, with subscription of whatever they can afford, as 'Friends of the Library,' at the birthday party Dec. 11.

None of the money thus collected will be used for anything but the purchase of books," Mrs. Wellman said.

#### G. T. SCHEDULE TRAIN

The Grand Trunk Passenger train which formerly left Birmingham for Chicago at 12:08 A. M. now leaves at 11:58 P. M., according to J. E. Malton, local passenger agent. The change became effective Sunday.

# GIFT GUIDE OF THE CHRISTMAS STORE

**FIFTEEN SHOPPING DAYS**—then Christmas! Between now and then, rely on Mulholland's for the gift-things you desire. Here at this Christmas Store are Gifts for all—Things to wear, gifts for the home, toys, novelties... all in good taste, and at Mulholland's conservative prices.



**Silk Underwear**  
Dance Sets at .....\$1.25 and \$1.95  
Chemise at .....\$1.95  
Slips at .....\$1.25 and up  
Gowns at .....\$2.95 and up  
Pajamas at .....\$1.79 and \$2.25

**LADIES' HAND-MADE Handkerchiefs**  
10c to \$1.00  
Plain, Initialed, and Embroidered

**WOOL Scarfs**  
59c and \$1.00  
Ladies' Scarfs in Plain Colors, Scotch Plaids and Stripes.

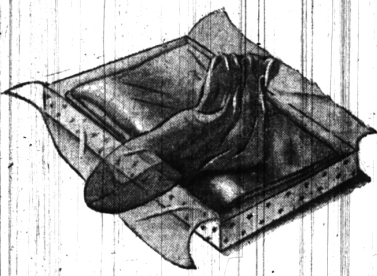
**Pillows**  
\$1.00  
Covers of rich rayon, Kapok-filled

**Gloves**  
For sports and dress wear. Wool, kid, suede and velvet— in the newest of styles and colors.



**THIS Powder Box** at \$1.00 is just one of a host of novelties. Others are Handkerchief Boxes at \$1.00, Desk Pens for the home (round base of red, green, black, lavender, or coral with neat metal trim... good quality pen) an unusual value at \$1.00.

In the Men's Department there are Toilet Sets, Brushes, Cigarette Containers, Ash Trays, Lighters, Tie-Racks, Leather Goods.

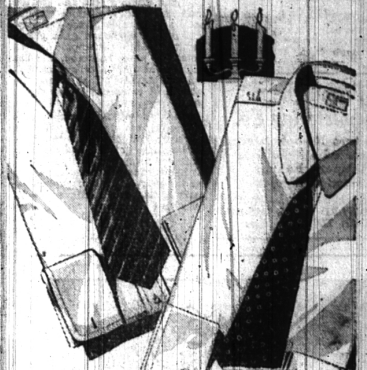


**Hosiery Values in Harmony with Christmas Thrift**  
Rollins at ..... 79c, \$1.00, \$1.50  
Humming Bird at ..... 79c and \$1.00  
Kayser at ..... \$1.00

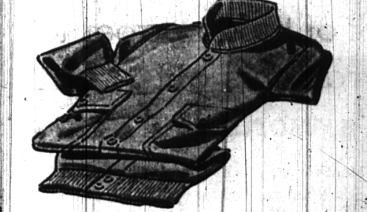


**Handbags**  
Styled in Fabric and Leather  
\$1.00 to \$2.95  
Envelope styles with metal trim, and Zipper Styles, in leathers and fabrics. We also have beaded Evening Bags.

**Turtle Neck Sweaters**  
Solid Colors and White.  
For Men  
\$1.95 to \$4.75  
For Boys - \$1.95



**Arrow Shirts 1.95**  
The famous Arrow Trump in white, plain colors, or stripes. Expertly tailored, and with the trimmest collar that ever graced a shirt.  
**OTHER SHIRTS AT \$1.00**  
Good quality in white, plain colors and fancy patterns.  
**Beautiful Neckwear - 50c to \$1.50**  
Wool, Silk, or Knitted. Let us show you the new Arrow Ties of rich, soft silk of specially fine quality, resilient construction.



**Suede Jackets \$5.00 up**  
If "He" hasn't one of these, it's a gift we know he will appreciate.

**Scarfs for Men**  
Silk and silk-and-wool in white, solid colors, and conservative patterns. All in good taste, they are priced from \$1.00.  
**Handkerchiefs**  
Plain Linen from 10c up. Initialed from 25c up. Included in our selection are the popular Arrow Handkerchiefs. A vast selection to choose from.

**Men's Hose 25c to \$1.00**  
Clocked, Plain, and Fancy Hose in the conservative styles that men like. Hose are an always-appreciated gift.

## TOYLAND

Bring Tommy, Jane and Junior to our Toyland! From Santa's own toy shop way up near the North Pole have come all the toys that children love!

- Dolls - Stuffed Dolls - Buggies
- Mechanical Toys - Trucks, Locomotives, Tractors
- Dishes and "Playing House" Toys
- Parker Bros. Games
- Lincoln Logs - Lincoln Bricks

**"SANTA WILL BE HERE HIMSELF SOON . . . WATCH FOR ANNOUNCEMENT!"**

Starting Monday This Store Will Be Open Evenings Until Christmas

**Mulholland's**  
233 North Woodward