

SURE, STAGE AND STUDIO.

Radio stars, like poets, are not made, they are born. Public opinion favors in spite of radio's campaign to popularize certain performers. No one knows how to become a radio star, but out of clear sky, star performers are born. (Adding insult to injury.)

If you don't please pub- lic's horses and all excess plugging fail to click with their audience. Excess and stars are still plugging and shoe-tricks to score.



Radio stars, like poets, are not made, they are born. Public opinion favors in spite of radio's campaign to popularize certain performers. No one knows how to become a radio star, but out of clear sky, star performers are born. (Adding insult to injury.)

If you don't please pub- lic's horses and all excess plugging fail to click with their audience. Excess and stars are still plugging and shoe-tricks to score.

Radio stars, like poets, are not made, they are born. Public opinion favors in spite of radio's campaign to popularize certain performers. No one knows how to become a radio star, but out of clear sky, star performers are born. (Adding insult to injury.)

If you don't please pub- lic's horses and all excess plugging fail to click with their audience. Excess and stars are still plugging and shoe-tricks to score.

Radio stars, like poets, are not made, they are born. Public opinion favors in spite of radio's campaign to popularize certain performers. No one knows how to become a radio star, but out of clear sky, star performers are born. (Adding insult to injury.)

If you don't please pub- lic's horses and all excess plugging fail to click with their audience. Excess and stars are still plugging and shoe-tricks to score.

Radio stars, like poets, are not made, they are born. Public opinion favors in spite of radio's campaign to popularize certain performers. No one knows how to become a radio star, but out of clear sky, star performers are born. (Adding insult to injury.)

If you don't please pub- lic's horses and all excess plugging fail to click with their audience. Excess and stars are still plugging and shoe-tricks to score.

Radio stars, like poets, are not made, they are born. Public opinion favors in spite of radio's campaign to popularize certain performers. No one knows how to become a radio star, but out of clear sky, star performers are born. (Adding insult to injury.)

If you don't please pub- lic's horses and all excess plugging fail to click with their audience. Excess and stars are still plugging and shoe-tricks to score.

Radio stars, like poets, are not made, they are born. Public opinion favors in spite of radio's campaign to popularize certain performers. No one knows how to become a radio star, but out of clear sky, star performers are born. (Adding insult to injury.)

If you don't please pub- lic's horses and all excess plugging fail to click with their audience. Excess and stars are still plugging and shoe-tricks to score.

Radio stars, like poets, are not made, they are born. Public opinion favors in spite of radio's campaign to popularize certain performers. No one knows how to become a radio star, but out of clear sky, star performers are born. (Adding insult to injury.)

If you don't please pub- lic's horses and all excess plugging fail to click with their audience. Excess and stars are still plugging and shoe-tricks to score.

Radio stars, like poets, are not made, they are born. Public opinion favors in spite of radio's campaign to popularize certain performers. No one knows how to become a radio star, but out of clear sky, star performers are born. (Adding insult to injury.)

If you don't please pub- lic's horses and all excess plugging fail to click with their audience. Excess and stars are still plugging and shoe-tricks to score.

Radio stars, like poets, are not made, they are born. Public opinion favors in spite of radio's campaign to popularize certain performers. No one knows how to become a radio star, but out of clear sky, star performers are born. (Adding insult to injury.)

If you don't please pub- lic's horses and all excess plugging fail to click with their audience. Excess and stars are still plugging and shoe-tricks to score.

Radio stars, like poets, are not made, they are born. Public opinion favors in spite of radio's campaign to popularize certain performers. No one knows how to become a radio star, but out of clear sky, star performers are born. (Adding insult to injury.)

If you don't please pub- lic's horses and all excess plugging fail to click with their audience. Excess and stars are still plugging and shoe-tricks to score.

Radio stars, like poets, are not made, they are born. Public opinion favors in spite of radio's campaign to popularize certain performers. No one knows how to become a radio star, but out of clear sky, star performers are born. (Adding insult to injury.)

If you don't please pub- lic's horses and all excess plugging fail to click with their audience. Excess and stars are still plugging and shoe-tricks to score.

Radio stars, like poets, are not made, they are born. Public opinion favors in spite of radio's campaign to popularize certain performers. No one knows how to become a radio star, but out of clear sky, star performers are born. (Adding insult to injury.)

If you don't please pub- lic's horses and all excess plugging fail to click with their audience. Excess and stars are still plugging and shoe-tricks to score.

Radio stars, like poets, are not made, they are born. Public opinion favors in spite of radio's campaign to popularize certain performers. No one knows how to become a radio star, but out of clear sky, star performers are born. (Adding insult to injury.)

If you don't please pub- lic's horses and all excess plugging fail to click with their audience. Excess and stars are still plugging and shoe-tricks to score.

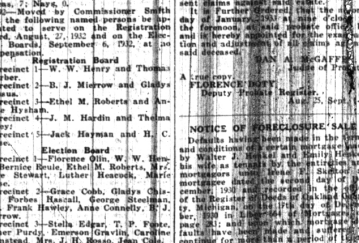
ETTA KETT



HIGH PRESSURE TETE



Terrible Advice



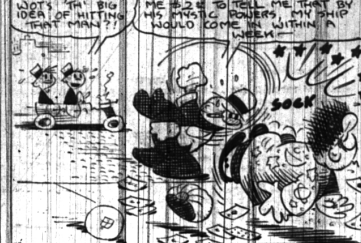
WELL PART OF IT CAME IN FULL RIGHT



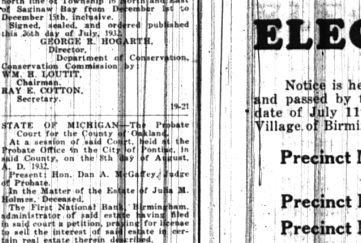
Going! Going! Gone!



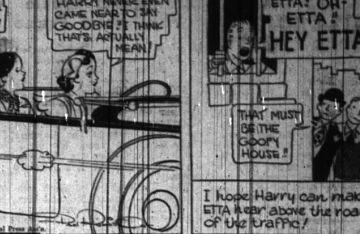
WELL PART OF IT CAME IN FULL RIGHT



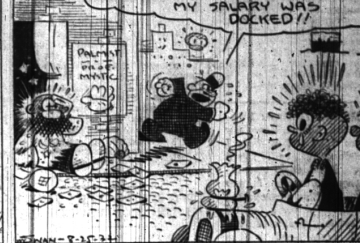
WELL PART OF IT CAME IN FULL RIGHT



By PAUL ROBINSON



By GEORGE SWAN



Legal Notices

STATE OF MICHIGAN. The Probate Court for the County of Oakland, Michigan, do hereby certify that the following is a true and correct copy of the will of the late **CHARLES E. PLUMSTEAD**, deceased, as the same appears by the records of said Court, to-wit:

I, **CHARLES E. PLUMSTEAD**, of the County of Oakland, State of Michigan, do hereby certify that the following is a true and correct copy of the will of the late **CHARLES E. PLUMSTEAD**, deceased, as the same appears by the records of said Court, to-wit:

NOTICE OF MORTGAGE SALE

NOTICE OF MORTGAGE SALE. Pursuant to the provisions of the Act for the Enforcement of Mortgages, in and to which I am a party, I hereby give notice that I will sell at public auction, on the 27th day of September, 1932, at 10 o'clock in the forenoon, the premises described in the following description, to-wit:

THE PREMISES described in the following description, to-wit:

ELECTION NOTICE

Notice is hereby given that in conformity with a resolution made and passed by the Commission of the Village of Birmingham on the date of July 11th, 1932, a SPECIAL ELECTION will be held in the Village of Birmingham at

- Precinct No. 1—Corner Harmon and Woodward Avenues.
- Precinct No. 2—Adams School.
- Precinct No. 3—Municipal Building.
- Precinct No. 4—Wylie Bell's Garage, 169 Elm St.
- Precinct No. 5—Voting Booth at S. W. corner Lincoln and Woodward.

Tuesday, September 6, 1932

between the hours of 8:00 o'clock A. M. and 9:30 o'clock P. M. Eastern Standard Time.

Qualified Electors shall vote upon the following question:

Shall the Village of Birmingham incorporate as a home rule city without change of boundaries?

YES
NO

Qualified Electors will also vote for members of a Charter Commission. (Vote for Nine)

- HARRY ALLEN
- GEORGE R. AVERILL
- JOHN S. BLACK
- EDWARD L. BRYANT
- RALPH I. CORYELL
- HAROLD T. ELLERBY
- LAWRENCE HULBERT
- ERNEST W. OSBORNE
- FRANK PACKARD
- CHARLES J. SHAIN
- HARRY S. STARR
- JAMES TAYLOR
- CLARENCE VLJET, SR.
- LEE A. WHITE

IRENE E. HANLEY,
Clerk, Village of Birmingham.

Dated: August 4, 1932.

Village Taxes

Due July 1st, 1932

NOTICE is hereby given that Village Taxes for the fiscal year 1932 are due and payable at the office of the Village Treasurer July 1, 1932.

Payable without penalty up to and including July 31, 1932.

One per cent penalty from August 1 to September 1, 1932, inclusive. Four per cent penalty from September 1 to October 1, 1932, inclusive. No taxes accepted by Village Treasurer after October 31, 1932, as the tax bill will be in the hands of the County Treasurer at Pontiac for collection. All taxes unpaid after October 31, 1932 will bear the four per cent penalty plus three-quarters of one per cent for each additional month or fraction thereof.

Charles E. Plumstead
Treasurer, Village of Birmingham