

LIST 38 FARMS IN TOWNSHIP

Agricultural Survey Values Lands and Buildings At \$4,729,804

In Bloomfield Township, the number of farms on April 1, 1930, was 38, and all land in farms totaled 4,880 acres, according to information furnished by the United States Census Bureau.

WE HEARD IT SAID BY— Clarence Vliet, superintendent of schools: "Piano teaching seems to have become a decadent art. At least we are finding in our schools fewer and fewer students who are interested in taking lessons."

valued at \$4,729,804, farm buildings alone at \$1,307,029, and farm implements and machinery at \$75,000. The value of commercial mills and factories located on the farms were not computed.

Occupants Take Over New Home



This attractive farmhouse, designed by Meehlman and Farrar, and built by the Booth Investment Company in the South Cranbrook development is now occupied by Mr. and Mrs. Richard E. Brown, formerly of Palmer Woods.

TEST SUIT FILED ON REFUND ACT

County Questions Validity Of Returning Southfield Drain Funds

Litigation was filed in Circuit Court Monday to test the validity of Act 243 of the Public Acts of 1931 under which Oakland County will return to bond purchasers and taxpayers the money obtained from them for the Southfield storm sewer drain.

Through its defense counsel, George A. Cram, Oakland County filed a friendly suit against Mayor D. Van Wagener, county drain commissioner, asking the court to determine whether the act is valid.

An injunction suit was brought to halt it after the drain was under way and on Dec. 12, 1930, Judge Frank L. Doty held that the proceedings were irregular and illegal.

There is a question whether bondholders can hold the county for interest on their bonds until mature, and whether the county will be obliged to pay interest on taxes collected and on money due contractors.

The work contracted under the terms of the act passed last spring, if any portion of the constructed drain is used as part of another drain project in the area, an estimate will be had of the value of the work done and will at that time be included in the special assessment. The county meanwhile will defray the cost of what has already been done.

When you have a NEWS ITEM which you think will interest our readers, just call for a report at seven years, he says, even though in that time they do not make another cent in profit.

MICHIGAN BELL TELEPHONE CO.

Long Distance Rates are Surprisingly Low

FOR INSTANCE: for 95c or less, between 4:30 a. m. and 7:00 p. m.

You can call the following points and talk for THREE MINUTES for the rates shown. Rates to other points are proportionately low.

Table with columns for destination (HOLLAND, HARRISVILLE, ALLEGAN, GRAND RAPIDS, KALAMAZOO, GLADWIN) and rate (95c, 95c, 90c, 85c, 85c, 80c).

The rates quoted are Station-to-Station Day rates, effective 4:30 a.m. to 7:00 p.m.; Evening Station-to-Station rates are effective 7:00 p.m. to 8:30 p.m., and Night Station-to-Station rates, 8:30 p.m. to 4:30 a.m.

For fastest service, give the operator the telephone number of the person you are calling, which can be obtained from "Information"

STATE OF MICHIGAN ORDER OF CONSERVATION COMMISSION-DEER-COUNTIES SOUTH OF TOWN 20 NORTH

The Director of Conservation, having made a thorough investigation of conditions as regards the hunting of deer in the counties of the State south of Town 20 North, recommends a closed season.

THEREFORE, the Conservation Commission by authority of Act 230, P. A. 1925, hereby orders that for a period of two years from November 15th, 1931, it shall be unlawful to pursue, hunt, or kill or attempt to pursue, hunt, or kill any deer in the district comprising the counties of the state south of Town 20 North, which is the north line of the Counties of Arenac, Gladwin, Clare, Osceola, Lake, and Mason excepting the Counties of Mason, Lake, Clare, and Newaygo, which counties are closed by Act 97, P. A. 1931.

Signed, sealed, and ordered published this 31st day of July, 1931.

GEORGE R. HOGARTH, Director, Department of Conservation. Conservation Commission by: WM. H. LOUITZ, Chairman. RAY E. COTTON, Secretary.

Three Fellowships Added To Food Foundation Work

Albert H. Merrill, president of the Kroger Grocery and Baking Company, announced today the establishment of three fellowships in each of three famous universities.

These Fellowships will supplement the work of the Food Foundation, according to Merrill, and bring to bear a wider range of classroom and experience on its research in foods.

Fellowships have been placed in institutions in each case where outstanding achievement have already been made by members of the staff, so that the benefits are obtained from experience and technique already developed.

The results of this research work will be co-ordinated and disseminated with studies carried on by the Foundation.

Plea Of Railroads For Freight Rate Increase One-Sided Picture Now

But Opponents Will Raise Many Issues At Hearing, Stewart Says

By CHARLES P. STEWART Washington—To hear the railroad spokesmen testifying, one would suppose there would be no doubt whatever of the justice of the railroad plea for a 15 per cent freight rate increase.

However, the interstate commerce commission, which will decide the matter, has selected only the railroads' side of the case as a precedent.

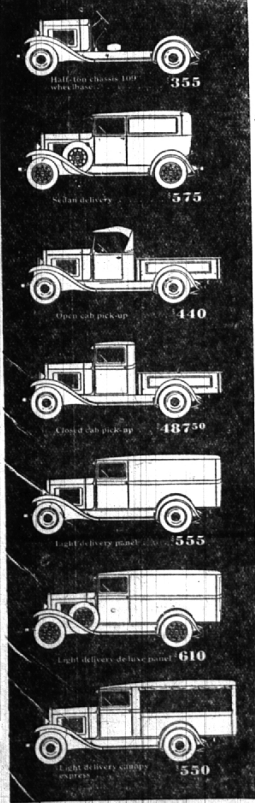
Let them pay dividends for awhile, during hard times, out of their surplus, says Counsel Laroze's spokesman. They can do it for seven years, he says, even though in that time they do not make another cent in profit.

ACCORDING to the story thus far: The roads have been making progressively less and less money per annum for a decade, until this year their net earnings seem unlikely more than barely to exceed the interest which in many instances is not enough to pay interest on their bonds.

That is why pointing work which you place in our hands receives the kind of attention and service that bring you personal satisfaction.

The Birmingham Eccentric Printers - Publishers Telephone: 11, 12, 13

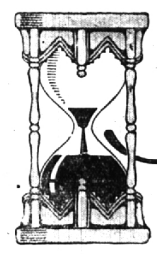
50-horsepower 6-cylinder 109" wheelbase 1/2-ton capacity CHEVROLET TRUCKS priced as low as \$440* complete with Chevrolet-built bodies



Illustrated at the right are some of the half-ton models included in Chevrolet's complete line of trucks—which consists of 1/2-ton and 1 1/2-ton models in three wheelbase lengths. Take the question of first-cost—and you learn that the Chevrolet Six is one of the lowest priced trucks you can buy!

JORDAN CHEVROLET, Inc. BIRMINGHAM, MICHIGAN 1204 Woodward at Ruffner Telephone 851

FOR LOWEST TRANSPORTATION COST



Time to buy your winter's supply of COAL and COKE just 30 days before COLD WEATHER

PROMPT SERVICE

You housewives know the importance of having coal bins filled promptly. Be assured of your coal deliveries on the exact day . . . and at the exact hour you specify by ordering your coal from Dependable Birmingham Fuel Dealers.

EXPERT ADVICE ON HEATING PROBLEMS

With our years of experience furnishing fuel for Birmingham homes, we can help you solve your fuel problem. Each different furnace requires a study as to the right fuel to burn. Ask us for this information.

We Pledge the Finest Service to Birmingham Fuel Buyers

Parks Coal Co. 232 HIGH ST. Phone: 2020 and 2021

Lawson-Erb Lumber Company 624 FOREST AVE. Phone: 111 and 112

R. C. Moulthrop Lumber Company EAST MAPLE AVE. Phone: 1 and 2

Winter has a way of creeping up on us just when we least expect it. Don't be caught this year with an empty coal bin. And too, it is much healthier to have a little fire in the furnace when the first cold fall winds begin to blow, than to prolong filling your bin . . . for then you look at the first chilly weather as a trial.

Frankly—we believe you will benefit by ordering your coal or coke now. Last minute ordering always brings certain delays. Now our yards are full . . . awaiting your order, and you are sure to be served with the cleanest, finest fuel.

Think this over . . . decide on the fuel you will burn this winter. We are glad to give you information concerning different fuels and their use. Have your winter's supply (or at least one or two tons) delivered . . . today!

Don't Wait Phone Your Order NOW!