

OAKLAND COUNTY NEWS

Lyon township's supervisor bills the township for only \$700, while other township supervisors in the county draw from \$1,200 to \$5,000; it was brought out in the recent election campaign there.

Men of the north Oxford neighborhood presented a play Friday night under F. T. A. auspices at the North Oxford School.

Negro spirituals featured the monthly meeting of the Davishurg Parent-Teacher Association, Friday night.

Oxford's Music Club entertained for the Rochester Tuesday.

In moments of extreme sorrow it is a genuine relief to realize that there is someone to assume the burden of detail that should never be your problem at this time.

We are at your service every hour of the day and night.

Telephone 850

Kimball - Bailey

FUNERAL DIRECTORS
Ambulance Service
341 NORTH WOODWARD AVENUE

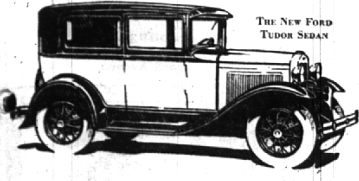
More than 73,000 miles in a New Ford

THE substantial worth of the new Ford is reflected in its good performance, economy and reliability. Its stamina and endurance are particularly apparent in sections where bad roads and severe weather put a heavy extra burden on the automobile.

An less than a year a new Ford Tudor Sedan was driven more than seventy-three thousand miles over a difficult route. The operating cost per mile was very low and practically the only expense for repairs was for new piston rings and a new bearing for the generator.

The car carried an average load of 1200 pounds of mail and was driven 230 miles daily. "The Ford has never failed to go when I was ready," writes one of the three mail carriers operating the car. "The starter did the trick last winter even at 34 degrees below zero. The gas runs about 20 miles per gallon. At times I pull a trailer whenever I have a bulky load."

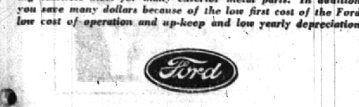
Many other Ford owners report the same satisfactory performance. Every part has been made to endure—to serve you faithfully and well for many thousands of miles.



LOW PRICES OF FORD CARS
\$430 to \$630

Features of the New Ford

Attractive lines and colors, rich, long-wearing upholstery, sturdy steel body construction, Triplex shatter-proof glass windshield, almost fully enclosed four-wheel brakes, four Bendable double-acting hydraulic shock absorbers, aluminum pistons, chrome silex alloy valves, torque-tube drive, three-quarter floating rear axle, more than twenty ball and roller bearings, and bright, enduring Rustless Steel for many exterior metal parts. In addition, you save many dollars because of the low first cost of the Ford, low cost of operation and up-keep and low yearly depreciation.



\$190,000 for the construction of a federal building and a postoffice. It is part of a five hundred million dollar building program authorized by Congress, according to reports sent to Congress by the postoffice and treasury departments.

A new dairy has been opened in Orion, with Roy Young as superintendent of the 217-acre dairy farm, owned by Leo Anderson and Hubert Hammett. Anderson and Hammett have visited the new plant, each being given a half-pint of milk to drink. Well-informed employees show all visitors through the dairy plant.

Two courses in electrical projects, explaining the proper uses of electricity in the homes, were started last Thursday and Friday by the home management specialist of Michigan State College, at Orion and at Millford. Demonstrations on meat canning and pressure cookers were also given.

Fee for the Boy Scout summer camp on Tommy's Lake, conducted by the Oakland County Council, has been set at \$12 by the camp committee. For Scouts in towns not contributing to the council, the budget fee will be \$14. A special preparatory session will be held from June 27 to June 28. The second period will be from June 29 to July 10, and the third from July 11 and 12. The fourth period will be from July 23 and 24.

A resident of Oakland County all his life, Elisha Farmer, 92, of Holly, died last week. His parents came to this country in a sailing boat from England in 1837, the journey requiring three months. Young Elisha attended school at Lakewoods when two-thirds of the pupils were Indian boys and girls. Later when his father's mill was burned, the family moved to Bloomfield Hills and bought a mill on what is now the Cranbrook estate of George G. Booth.

Huntington Woods and Pleasant Ridge will not receive any Royal Oak water through the North Woodward water system. Pressure at the Ten-Mile road from the North Woodward system is greater than that from the well on Livestock in the north end, and only Detroit water flows into the mains in Huntington Woods and Pleasant Ridge. A check valve will be installed on the main line into Royal Oak from the Detroit supply soon and effectively prevent any of the local water from escaping into the mains of the neighboring municipalities.

Metamora, sister village to Oxford, Monday voted on the new position of bonding the village for \$2,400 to erect buildings, tanks, and other necessary land improvements, mains and equipment to establish and furnish a water supply for the village.

Millford is not considering cutting school expenses by cutting out such classes as home economics, agriculture, manual arts, music, drawing and coached sports because the schools are organized under the Rural Agricultural School Act requiring that such subjects be taught. Besides, it is stated in the law that the building shall be used as a community center for such things as plays, entertainments and athletics. Cost of lights for the gymnasium has been estimated at 75 an hour, according to the Millford school superintendent. Monday night at the meeting of the Parent-Teacher association some of the members of the school were present in detail by the superintendent.

Teachers and students in all grade schools of southern Oakland County are preparing for the Metropolitan and National Spelling Bee which officially opened Friday with grade bees in which fifth, sixth, seventh and eighth grades may participate.

Oakland County plumbers held their association meeting, dinner and conference in Oxford last week, with representatives from 16 towns present.

Republicans of Springfield township held their caucus in Davishurg Saturday. The work and Democrats will hold their caucus on Mar. 17.

"Resolved, That a Tractor is More Economical on the Average Farm Than Horses," was the subject for a debate last Wednesday by the Salem Farmers Club meeting at South Lyon.

Ordinance granting a franchise to the Detroit-Pontiac elevated highway for the construction and operation of an elevated automobile toll road, through Ferndale, was laid out for final reading Tuesday night will be placed on the official Ferndale ballot April 6. Action by the electors will grant the franchise which is limited to 20 years by the city charter. Ratification will be only by a 60 percent or more affirmative vote.

Free training and pruning meetings were held Monday and Tuesday afternoons in Pontiac as a part of the Extension Program of Michigan State College for Oakland County.

Work on remodeling the St. James Hotel in Rochester, Mich., by fire two weeks ago, has been started; when completed, the hotel will give Rochester modern hotelery service.

An ancient white oak tree, estimated at 199 years old, on the James Clark farm at Orion, was cut down last week, revealing an intriguing story in its growth rings. In its youth, numerous "sprouts of green" and scars of tragedy, touched off by a chronic of a marvelous "comeback" to a respectable, steady old age.

Garden Notes

1931	MARCH	1931
8	9	10
11	12	13
14	15	16
17	18	19
20	21	22
23	24	25
26	27	28
29	30	31
1	2	3
4	5	6
7	8	9

"All seed-sowing is a mysterious thing, whether the seed falls into the earth or into soul"—Amiel wrote in his journal.

Spring Stirrings

Spring is the time for sowing seeds and thoughts. So the words of a prose-poem, with the spirit of spring, are apropos—"If I could catch a covert from pieces of the spring, what dreams a lady child would have beneath so fair a thing? A center of the desire, like a bordering of green with patches of the yellow sun all enveloped in between. Bright ribbons of the silky grass leant prettily across, with satin of new little leaves, and velvet of the moss. In every corner, a daisy half-hidden from the view, with many-flowered square leaf-wax, of pink tints and blue; of flossy silk and gossamer, of tissue and brocade; a warp of rosy morning mist, a mood of purple shade. Embroideries of little vines, and spider-webs of lace, with tassels of the alder leaf at each convenient place. With gold-thread I would sew the seams, and needles of fine time, and never child in all the world would have a quilt like mine."—Abbie Farwell Brown.

No person should be too busy to give gardens some thought. No home is too small for at least some little planting, attractively arranged.

Of course there are many types of gardens—as many types and adaptations as there are people to plant the gardens perhaps. But one thing is certain: to enjoy yourself in some kind of a garden, have the look-of-things; plant some things and tend them.

Plenty of box-gardens will be started this week. For instance, you can get early marigolds by sowing seed in boxes now; the tall kinds are sometimes late in developing if you wait for warm weather to plant them. Start ALL late season annuals now, by planting them in boxes, if you want a full season of blooming.

All perennials and hardy annuals CAN be sown in the frozen ground to get an early start. Sow the main crop of poppy seeds, for example now; Iceland poppies, scattered at this time will give plants that bloom next fall and, freezing weather, and furnish beautiful cutting material.

By the way, removing coverings from plants before the danger of spring frosts is likely to result disastrously; the first warm sun and wind will encourage an early and premature growth that is quite apt to be frozen off some chilly night.

To organize a local rose society, all interested persons will meet Saturday afternoon, in the balcony at the North American Flower Show in the new Naval Armory on Jefferson avenue, Detroit.

Talks on gardening are being given over radio station W.W.J. each Wednesday at 2:30 p. m., each Thursday at 10:15 a. m., and each Sunday at 3:30 p. m.

One of the most interesting forms of gardening, and the oldest in history, is the herb garden. There are enough of the common kinds here to make such a garden intensely interesting. Amongst among the common herbs include: chamomile, sweet basil, curcaway, coriander, dill, fennel, sorrel, pennywort, summer chyme, and self-seeding. Perennial herbs include: sweet fennel, lavender, mint, rosemary, rue, sage, savory, sweet marjoram, and parsley.

Now is the time to spray trees to kill injurious scale insects before the buds burst open, according to Eugene Putters, landscape architect who has just opened a gardening shop on west Maple avenue.

Late flowering shrubs and trees may be pruned in the early spring, but whether that early blooming varieties must be left until their flowering season is past, since their flowers are produced from buds that developed last year.

In planning this year's flower garden, you may as well try to include the flowers most suitable for artistic bouquets. Greatly reduce dependence for bouquets must be on the hardy shrubs, perennials and biennials, and the early spring bulbs. After their season, come the annuals which bloom from July until frost. Aster, poppies, of sorts, cosmos, sweet pea, stocks, nasturtiums, forget-me-nots, and geraniums, calendula, marigolds, corellas and calliopsis must all be considered.

It would be better to use on heavy soils, and get the soil tested plants. Never apply after transplanting or on weak or sickly plants. Dilute the fertilizer at weak time. The aim is usually to force large flowers, so applications are usually started when the buds begin to form, to take care of the extra nourishment demanded for flower production.

The Spring Sale

And the many genuine worthwhile Savings is attracting new and enthusiastic shoppers

"No need in going to town and subjecting yourself to any inconveniences whatever when you can get such good values as I am getting here, to say nothing about the expense and the time I can save," said one of our customers.

- Smart Spring Shoes \$4.65
Phoenix Fine Hosiery 77c
Washable Kid Gloves \$1.95
Hand Bags Special \$1.00
Fitted and Plain Cases \$7.95
Cotton Wash Dresses \$1.00
New Perky Hankies 25c

Continuing The Spring Sale On Yard Goods - Domestic

- | | | |
|--------------------------|-----|--------|
| Fast Color Prints | yd. | 19c |
| 88 Cotton Percalcs | yd. | 19c |
| Peter Pan Gingham | yd. | 29c |
| Printed Silk | yd. | 49c |
| Crepe De Chine | yd. | \$1.49 |
| Kalburnie Gingham | yd. | 15c |
| Unbleached Muslin | yd. | 8c |
| Hope Cotton | yd. | 13c |
| Fruit of the Loom | yd. | 19c |
| Berkeley Cambric, No. 60 | yd. | 19c |

Curtains - Cretonnes - Bedding

- | | | |
|-----------------------|-----|-------------|
| Curtains and Panels | pr. | \$1.00 |
| Curtains | pr. | \$1.95 |
| Curtain Material | yd. | 49c and 25c |
| 39c Cretonne | yd. | 29c |
| 81x99 Mohawk Sheets | Ea. | \$1.00 |
| 9 4 Lockwood Sheeting | yd. | 49c |

Linens, Towels, Blankets

- | | | |
|----------------------------|-------|--------|
| Stevens Linen Crash | yd. | 17c |
| Dish Cloths | 3 for | 25c |
| 25c Bath Towels | | 15c |
| Wash Cloth, Special | | 5c |
| 75c Linen Towels | | 49c |
| 75c Linen Towels | | 49c |
| \$5.95 Luncheon Cloth Sets | | \$3.95 |
| Breakfast Cloth, Special | | 95c |
| \$10.50 Blankets | Now | \$6.95 |

Notions

- | | | |
|----------------------|-----------|-----|
| Silk Thread | Now | 8c |
| Bias Binding | Now | 8c |
| Shinola Polish | Now | 8c |
| Cheese Cloth, 5 yds. | Now | 25c |
| Kotex, Special | Now | 29c |
| 6-Strand Floss | Now 2 for | 5c |
| Fleisher's Yarn | Now | 49c |
| Merc. Darning Cotton | Now 2 for | 5c |

Store Hours: 8:30 to 9:30 (Daily), 8:30 to 10:00 (Saturday)
We Deliver: If inconvenient to come in just Phone 2500

A Fashion Event Presenting the Newest Spring APPAREL



DRESSES

Distinctive! Youthful!
\$4.95 \$8.95 \$12.95

Here are dresses which come triumphantly through the dominating style issues in the spring style program. Romantic fashions are as popular as ever and adroitly employ soft crepes, novelty woolsens, prints and gewgaws. The colors run the gamut of flower shades to black, note the unusual sleeve and neckline treatments.



COATS

Are Dashing! Slender!
\$11 \$16

Individuality plays an important part in the designing of these coats for spring! The scarf-collar idea is extremely youthful and the belted styles are becoming to all types. Soft spongy creeds, smooth crepes and novelty wools are rich in coloring. You'll find our price is extremely modest for such smart coats.

L. & David's BIRMINGHAM DEPARTMENT STORE

Woodward thru to Maple
Birmingham's Foremost Store