

SPRAYING
Protect your trees and shrubbery from the ravages of scale, insects, and fungus by spraying. No job too large or small. ESTIMATES CHEERFULLY GIVEN.
CHARLES C. OLIN
TREE SURGEON PH. 789

Announcing
Peony Show
Lobby, Publix-B'ham Theatre
Thursday to Sunday - This Week
Baumann's Dahlia Gardens
Adams and Wattles Road - Phone 1706

\$10 STARTS YOUR 5% INVESTMENT ON THE POPULAR MONTHLY PLAN
It is easy and simple to invest in Consumers Power Preferred Shares. Be the amount large or small—it earns in full measure here at 5%—and soon grows into a comfortable nest-egg.
Sums can be invested from month to month on the popular monthly plan at \$10 per share. Interest begins from the day the payments are made. Or you can invest in full-paid shares and begin to earn cash dividends at once.

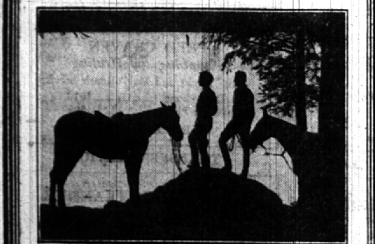
A SOUND INVESTMENT
Tax Free in Michigan
Giving You
DIVIDEND-PAYING PARTNERSHIP
in the Light, Heat and Power Business
700 MICHIGAN
Cities, towns and communities
Get Our Interesting Picture Folder

CONSUMERS POWER Preferred SHARES

40,000 MICHIGAN PEOPLE EARN A CASH INCOME HERE
TAX FREE IN MICHIGAN
The Company Pays the Taxes

Ask Our Employees or at Any of Our Offices
CONSUMERS POWER CO.

MICHIGAN BELL TELEPHONE CO.



Spend your vacation in Michigan... land of history and romance

CAMP on the shores of Gitchee Gumee... photograph deer among towering pines... follow the trails of the Ojibwas... visit British Landing and the old forts of Mackinac... Michigan is as rich in historic interest as in scenic beauty.

And wherever you may go, Long Distance telephone service will be available. Dispel worry by calling home and office frequently. Call friends to notify them when you will arrive. The low cost of your Long Distance calls will prove a small item in your vacation budget.

One of a series of 22 advertisements concerning the vacation advantages of Michigan, being published in 22 newspapers in the Michigan Bell Telephone Company.
VACATION IN MICHIGAN

The Well-Dressed House Wears Flower Boxes

Come, for the soft, low sunlight calls, we lose the pleasant hours; 'tis lovelier than these cottage walls—that seat among the flowers. And I will learn of thee a prayer to Him who gave a home so fair, a lot so blest as ours.—William Bryant.

How much do you love your home? Enough to devote some of your precious time making it a fresh summer frock? Trim it up a little, inside and out. Bring flowers from the garden to adorn your rooms. Fountains, firs, and, any day now, roses.

What about the outside? The garden takes care of the grounds, but what have you done to correlate your home and grounds? The answer is to be found in the flower box. Window and porch boxes form a connecting link to complete the chain of floral beauty.

In a community of single homes, such as Birmingham, there is ample opportunity for the use of porch and window boxes. Because, even though your home is of the modern type, minus the old-fashioned veranda, you probably have a side, rear or upstairs porch to beautify—and what a difference a flowering makes. The flower box transforms the house into a home—even to the casual glance of the passer-by, because it shows that somebody cares.

They are not costly luxuries, these boxes for the porch or window. In the first place choose simple boxes. It is not the box that forms the ornament, remember, but the flowers it contains. And so many times the decorations on the elaborate box are obscured by the vines and foliage.

To be really artistic, porch or window boxes should harmonize with the color of the house and type. In building the box choose cypress, red cedar or white pine for coloring matter. The flower box transforms the house into a home—even to the casual glance of the passer-by, because it shows that somebody cares.

In dimensions, boxes should be from 6 to 10 inches deep, from 8 to 12 inches wide, and of any desired length, preferably not more than 6 feet. Cover with several coats of good outside paint, inside and out to increase the durability.

When you select plants for your porch or window boxes, there are two considerations to bear in mind: artistic effect and color. Color, size and form, and varieties which grow best in either sunny or shady places according to the location of your box.

If your box is exposed to the full glare of the sunlight, and for a shady porch or corner pick out plants that grow best in such secluded spots.

Another thing to remember is not to crowd a number of varieties into one box, or the result will be floral hash. More than four or five different kinds of flowers will spoil the artistic effect. Often only one flower is used, such as the petunia or pansy.

If you want more than one flower, avoid such colors as scarlet, red or purple especially against a background of red brick. You will find the contrasting colors including blue, yellow, white, and, of course, green in profusion, much more pleasing to the eye.

For a sunny exposure, you will find such plants as the double petunia, mignonette, heliotrope, geranium, nasturtium, lobelia and begonia particularly suitable. For foliage plants adapted to a sunny exposure to combine with these flowers, you may choose dusty miller, croton, coleus or dracaena.

In the front of your porch or window boxes plant flowers of the short varieties, such as sweet alyssum, or the dwarf white leaved geranium. For trailing vines you can choose from English ivy, German ivy, trailing fuchsia, trailing lobelia and wandering Jew.

If you want to brighten a shady nook with a porch or window box, you can make your selection of plants from Boston fern, asparagus, sword fern, sprengerii, dracaena, wandering Jew and Rex begonias, all of which are found in

their native habitat, growing in spots protected from the sun. Flower boxes adorning the exterior of a house are the same as the smile on a face—an expression of the friendliness that is within. In both cases, we know they mean welcome. Flower boxes, in an artistic sense, are the tie that binds the house and garden in harmonious effect.

We've Heard
An apple caused the first downfall of man, but peaches have handed the business since that time.—Chickasha Express.

THE GARDEN & LANDSCAPE CO.
FREE 100 large field grown rose bushes of inn varieties, one with any dollar purchase, one to each customer, potted or with earth, while they last.
Note:—We have a few choice evergreens which will be cleared out during June at low prices. See these.
In Birmingham at Woodward and Willets Phone 2386
GRASS SEEDS—VIGORO—PEAT—BONEMERAL WEDO—SHEEPMANURE

LOCAL STUDENT ON GRADUATION LIST
Miss Ivy Walker, daughter of Mr. and Mrs. Ray E. Walker, R. D. 4, Birmingham, is one of the 32 young women who were graduated from Oakland County Normal School in Pontiac at commencement exercises held Tuesday. Miss Walker was a graduate of Clawson High School in the class of 1930.

Subscribe to The Eccentric \$2 per year, two years for \$3.50.

Friendly The modern funeral director enters a home as a friend. He goes there to take charge of all details and to make the burden as light as possible.

Constant mingling and association with families from every station in life engenders in him this attitude of friendliness and understanding. Long experience has made our service friendly.

MEMBER THE ORDER OF THE GOLDEN RULE
S.O. WYLIE BELL
FUNERAL DIRECTOR
820 East Maple
Birmingham, Mich.
PHONE 29

You will like the price* as well as the quality...

What must you pay for the kind of car you would like to own? Can you get a car that is well built, fast, easy to drive and good to look at—for the price you want to pay?

Indeed you can—for in Pontiac you get so much for your money. It is an outstanding General Motors value.

For instance, if you owned a small car in the past, you will find you can buy the fine Pontiac today for about what that small car cost you. Yet what extra value Pontiac gives you!

One fine thing you get is a 60 h. p. motor that is smooth and quiet at all times. It is a large motor, and so does all you ask with ease. And you can trust it to work that way as long as you have the car.

Then you will get a fine new Fisher body which is built to shut out heat, cold, rain and noise. The seat springs are deep—the cushions soft. Real mohair and whip-

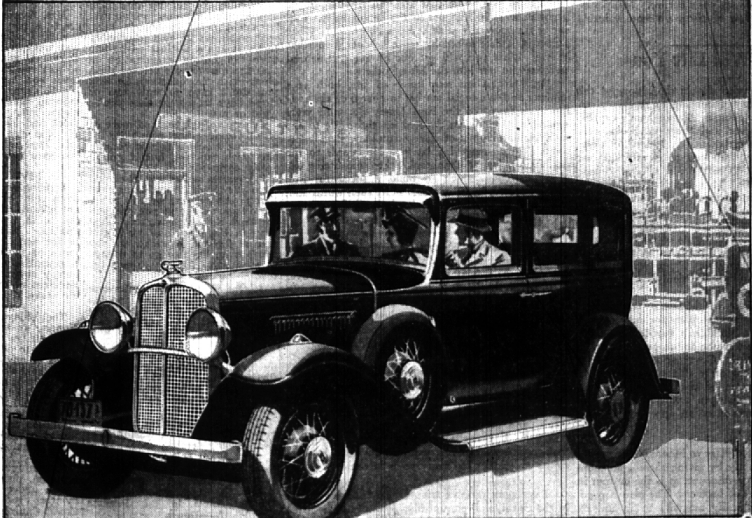
cord give the style and long wear you want for pride and lasting value.

You will find the Pontiac very comfortable to ride in. There are rubber cushions at 43 points in the chassis—a fine-car feature which takes up most of the road shocks. Also there are four hydraulic shock absorbers to add to your comfort.

The first time you put your foot on the brakes you will know that they work surely and with great ease.

Your friends will say that Pontiac's lines and color and finish make it a car to be proud of. People will turn to watch it as you drive by. You will feel that you have bought fine-car value at a very low cost.

Of course you may say that we think more of our car than you might! Then why not drive the Pontiac and find out just how well it lives up to what we say about it? Any Oakland-Pontiac dealer will be glad to let you take a Pontiac out on the road, whenever you are ready to make the test.



PONTIAC
MAKING NEW FRIENDS AND KEEPING THE OLD

Two-door Sedan or Coupe, equipped and delivered in Birmingham, \$736. Sport Coupe, \$778. Four-door Sedan or Convertible Coupe, \$808. Custom Sedan, \$848. All cars equipped with front and rear bumpers, shock absorbers, five wire wheels, and extra tire, tube and tire lock.

\$738*
DELIVERED

Oliver Cadillac Company
D. I. Oliver and Sons
234 North Woodward Avenue - - - - - Birmingham 2024

Feed Everything You Grow
with this complete, balanced diet

VIGORO
McClellan Feed and Salt Co. DISTRIBUTORS Phone 314

TRUCKING--
ASHES COLLECTED
Phone 1480
Norman L. Shovan
503 E. Lincoln