

POLITICAL ADVERTISEMENTS

FRED W. HAACK Candidate for Highway Commissioner

"If elected my desire is to cooperate with the people, keep expenses low, and employ help from Bloomfield Township and the Village of Birmingham if possible."

PRIMARY ELECTION MARCH 2, 1931

Re-elect

R. Margaret THOMAS Township Treasurer

Primary Election, Monday, Mar. 2, 1931

(Office Limited to 2 Year Term)

Mrs. Thomas has been actively engaged in Tax work for the past seven years. Six years as assistant to the Village Treasurer, and the last year as Township Treasurer, where she has served faithfully and efficiently.

This Ad Inserted and Paid for by Friends

FIRST SPELLING CONTEST, MARCH 6

Annual Competition This Year Again Open To Children in Three Counties

A week's trip to Washington, D. C., and a share of the \$2,500 prize money will be the major awards for the Michigan boy or girl who earns the right to compete in the 1931 National Spelling Bee that is being conducted this spring by two dozen newspapers throughout the country.

The Michigan phase of the contest is open to all pupils in the fifth, sixth, seventh and eighth grades of all public, private and parochial schools in Wayne, Oakland and Macomb counties.

The first elimination contest in the bee will be held Mar. 6 when all participating schools will hold their grade spell downs, every grade champion to receive a copy of Webster's Collegiate Dictionary, with the name of the champion embossed in gold letters on the cover.

Will Receive Atlas The 10 members of each grade team also will be determined at this time, these teams to compete in the school bees Mar. 27. Every school champion will be presented with a copy of Rand, McNally & Company's New International Atlas of the World.

The first interscholastic phase of the bee will be held April 17 when the district champions will meet in the metropolitan bee, which is scheduled for the afternoon of May 8 in the State Fairgrounds Coliseum.

The metropolitan champion will go to Washington to represent Michigan in the national finals and, regardless of how he or she places in this bee, will receive part of the \$2,500 purse. First and second prizes will be \$1,000 and \$500, respectively.

Made Strong Showing This will be the seventh annual National Spelling Bee. Four girls and two boys have been the national champions to date. All of Michigan's representatives in the national bee so far have been girls and all of them made a strong showing but failed to win first honors.

Ruth Desjardins, who carried the Michigan banner last year, reached nearer the coveted goal than any of her predecessors. Ruth finished second.

The Michigan phase of the contest is sponsored by the Detroit News which provides all the prizes and pays all expenses of the winner and his or her escort to Washington.

Starting two years ago in a news gathering, 11-year-old Agnes O. Nelson of Battle Lake, Minn., claims to be the youngest official reporter in the United States.

Church News

First Methodist Episcopal Church

Next Sabbath evening at 8 o'clock, the church will hold a special service for the young people, at which the pastor will read the following message from the Christian Science textbook, "Science and Health with Key to the Scriptures," by Mary Baker Eddy: "The perfect Mind sends forth its own righteousness, of which the case man is." All is vanity (p. 229).

United Presbyterian Church

Next Sabbath evening at 8 o'clock, the church will hold a special service for the young people, at which the pastor will read the following message from the Christian Science textbook, "Science and Health with Key to the Scriptures," by Mary Baker Eddy: "The perfect Mind sends forth its own righteousness, of which the case man is." All is vanity (p. 229).

First Baptist Church

Next Sabbath evening at 8 o'clock, the church will hold a special service for the young people, at which the pastor will read the following message from the Christian Science textbook, "Science and Health with Key to the Scriptures," by Mary Baker Eddy: "The perfect Mind sends forth its own righteousness, of which the case man is." All is vanity (p. 229).

First Baptist Church

Next Sabbath evening at 8 o'clock, the church will hold a special service for the young people, at which the pastor will read the following message from the Christian Science textbook, "Science and Health with Key to the Scriptures," by Mary Baker Eddy: "The perfect Mind sends forth its own righteousness, of which the case man is." All is vanity (p. 229).

First Baptist Church

Next Sabbath evening at 8 o'clock, the church will hold a special service for the young people, at which the pastor will read the following message from the Christian Science textbook, "Science and Health with Key to the Scriptures," by Mary Baker Eddy: "The perfect Mind sends forth its own righteousness, of which the case man is." All is vanity (p. 229).

First Baptist Church

Next Sabbath evening at 8 o'clock, the church will hold a special service for the young people, at which the pastor will read the following message from the Christian Science textbook, "Science and Health with Key to the Scriptures," by Mary Baker Eddy: "The perfect Mind sends forth its own righteousness, of which the case man is." All is vanity (p. 229).

First Baptist Church

Next Sabbath evening at 8 o'clock, the church will hold a special service for the young people, at which the pastor will read the following message from the Christian Science textbook, "Science and Health with Key to the Scriptures," by Mary Baker Eddy: "The perfect Mind sends forth its own righteousness, of which the case man is." All is vanity (p. 229).

First Baptist Church

Next Sabbath evening at 8 o'clock, the church will hold a special service for the young people, at which the pastor will read the following message from the Christian Science textbook, "Science and Health with Key to the Scriptures," by Mary Baker Eddy: "The perfect Mind sends forth its own righteousness, of which the case man is." All is vanity (p. 229).

First Baptist Church

Next Sabbath evening at 8 o'clock, the church will hold a special service for the young people, at which the pastor will read the following message from the Christian Science textbook, "Science and Health with Key to the Scriptures," by Mary Baker Eddy: "The perfect Mind sends forth its own righteousness, of which the case man is." All is vanity (p. 229).

First Baptist Church

Next Sabbath evening at 8 o'clock, the church will hold a special service for the young people, at which the pastor will read the following message from the Christian Science textbook, "Science and Health with Key to the Scriptures," by Mary Baker Eddy: "The perfect Mind sends forth its own righteousness, of which the case man is." All is vanity (p. 229).

First Baptist Church

Southfield United Presbyterian Church

Next Sabbath evening at 8 o'clock, the church will hold a special service for the young people, at which the pastor will read the following message from the Christian Science textbook, "Science and Health with Key to the Scriptures," by Mary Baker Eddy: "The perfect Mind sends forth its own righteousness, of which the case man is." All is vanity (p. 229).

Southfield United Presbyterian Church

Next Sabbath evening at 8 o'clock, the church will hold a special service for the young people, at which the pastor will read the following message from the Christian Science textbook, "Science and Health with Key to the Scriptures," by Mary Baker Eddy: "The perfect Mind sends forth its own righteousness, of which the case man is." All is vanity (p. 229).

Southfield United Presbyterian Church

Next Sabbath evening at 8 o'clock, the church will hold a special service for the young people, at which the pastor will read the following message from the Christian Science textbook, "Science and Health with Key to the Scriptures," by Mary Baker Eddy: "The perfect Mind sends forth its own righteousness, of which the case man is." All is vanity (p. 229).

Southfield United Presbyterian Church

Next Sabbath evening at 8 o'clock, the church will hold a special service for the young people, at which the pastor will read the following message from the Christian Science textbook, "Science and Health with Key to the Scriptures," by Mary Baker Eddy: "The perfect Mind sends forth its own righteousness, of which the case man is." All is vanity (p. 229).

Southfield United Presbyterian Church

Next Sabbath evening at 8 o'clock, the church will hold a special service for the young people, at which the pastor will read the following message from the Christian Science textbook, "Science and Health with Key to the Scriptures," by Mary Baker Eddy: "The perfect Mind sends forth its own righteousness, of which the case man is." All is vanity (p. 229).

Southfield United Presbyterian Church

Next Sabbath evening at 8 o'clock, the church will hold a special service for the young people, at which the pastor will read the following message from the Christian Science textbook, "Science and Health with Key to the Scriptures," by Mary Baker Eddy: "The perfect Mind sends forth its own righteousness, of which the case man is." All is vanity (p. 229).

Southfield United Presbyterian Church

Next Sabbath evening at 8 o'clock, the church will hold a special service for the young people, at which the pastor will read the following message from the Christian Science textbook, "Science and Health with Key to the Scriptures," by Mary Baker Eddy: "The perfect Mind sends forth its own righteousness, of which the case man is." All is vanity (p. 229).

Southfield United Presbyterian Church

Next Sabbath evening at 8 o'clock, the church will hold a special service for the young people, at which the pastor will read the following message from the Christian Science textbook, "Science and Health with Key to the Scriptures," by Mary Baker Eddy: "The perfect Mind sends forth its own righteousness, of which the case man is." All is vanity (p. 229).

Southfield United Presbyterian Church

Next Sabbath evening at 8 o'clock, the church will hold a special service for the young people, at which the pastor will read the following message from the Christian Science textbook, "Science and Health with Key to the Scriptures," by Mary Baker Eddy: "The perfect Mind sends forth its own righteousness, of which the case man is." All is vanity (p. 229).

Southfield United Presbyterian Church

Next Sabbath evening at 8 o'clock, the church will hold a special service for the young people, at which the pastor will read the following message from the Christian Science textbook, "Science and Health with Key to the Scriptures," by Mary Baker Eddy: "The perfect Mind sends forth its own righteousness, of which the case man is." All is vanity (p. 229).

Southfield United Presbyterian Church

Next Sabbath evening at 8 o'clock, the church will hold a special service for the young people, at which the pastor will read the following message from the Christian Science textbook, "Science and Health with Key to the Scriptures," by Mary Baker Eddy: "The perfect Mind sends forth its own righteousness, of which the case man is." All is vanity (p. 229).

Southfield United Presbyterian Church

POLITICAL ADVERTISEMENT

JAMES V. BAYLEY

CANDIDATE FOR RE-ELECTION FOR BLOOMFIELD TOWNSHIP CLERK



Primary Election to be Held on MONDAY, MARCH 2, 1931

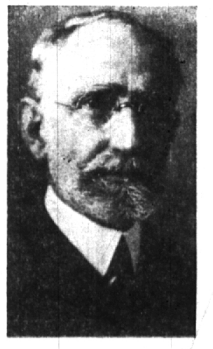
"I wish to inform the people at this time that, should the successful candidate for supervisor may be, I will do everything in my power to aid him in carrying out the work of our Township government. Bloomfield Township's affairs have grown from those of a small, sparsely settled district, to one of the largest in Michigan. There are many difficult details connected with it, the correct doing of which means much to the taxpayers."

Your Support Will Be Appreciated

POLITICAL ADVERTISEMENT

JOHN B. HOWARTH

FOR Township Supervisor



—because of his record of unending service to this community —his years of success in the administration of large business affairs —his outstanding service to the American soldier in France —his ten years intimate experience with the growth and development of this township, we the undersigned, —friends and admirers of Mr. Howarth —urge his candidacy for Township Supervisor, assured of the fact that he will give the same courteous conscientious energy to the duties of this office which has always characterized his long and useful life

- Mrs. O. I. Andrews J. J. Gaffl Young C. Smith Charles Asper Geo. J. Gnu F. B. Smith John S. Black A. J. Hart C. J. O'Connor Charles E. Buck W. A. P. John James F. Partlan E. S. Clark Norman James L. N. Pyle L. E. Colgrove A. D. Jardine Mrs. R. S. Preble B. E. Drury J. W. T. Knox H. C. Penny, Jr. Dr. A. S. Diack J. H. Loftis C. H. Richey A. J. Fellman Mrs. C. K. Latham H. W. Raley R. C. Fowler Harry Mack Geo. W. Streinger L. A. Farquhar James Martindale L. T. Robinson

POLITICAL ADVERTISEMENT

PERRY A. VAUGHAN

SUPERVISOR OF BLOOMFIELD TOWNSHIP



Primary - March 2, 1931

Perry A. Vaughan was born in the Township of Bloomfield, where he now resides with his wife and children. He received his education in the public schools, the Detroit University, Lansing Business University and Massachusetts Institute of Technology.

He has held the office of School Trustee for twenty years in his district, was Assessor for Bloomfield Hills Village for four years and has acted as a member of the Township Board for the unexpired term of the late F. B. Harper. Mr. Vaughan is thoroughly acquainted with the needs of the township as well as the duties of the office of Supervisor.

By education and experience he is thoroughly qualified to represent his township in this important office and promises an honest, economical and business-like administration as Supervisor, if elected.