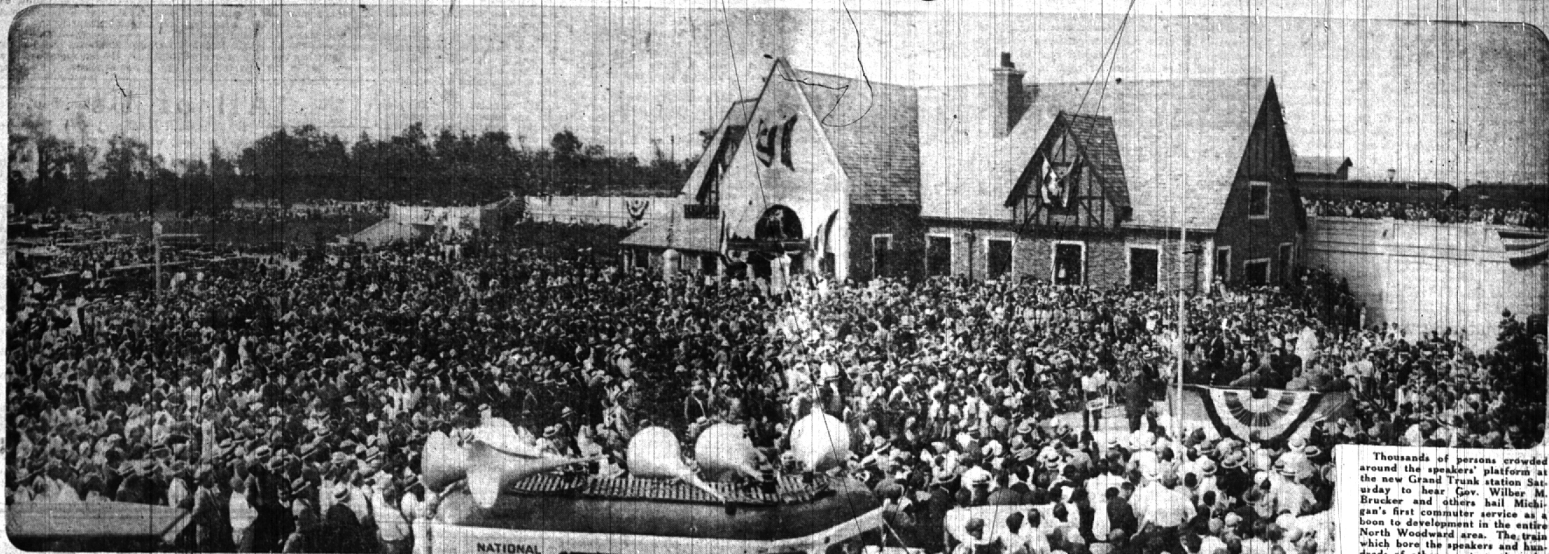


Scenes as Birmingham Celebrated Opening of G. T. Commuter Service



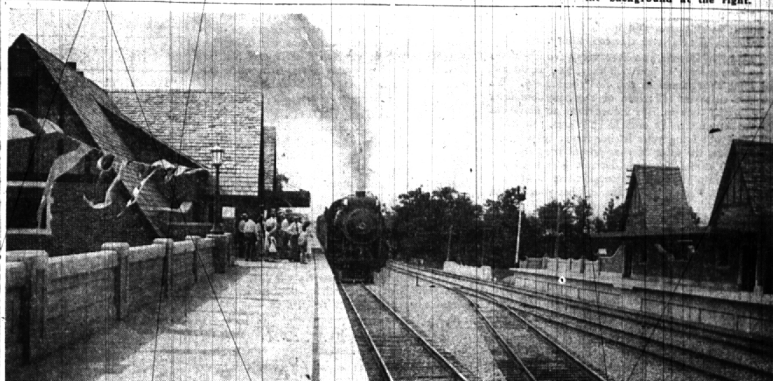
Thousands of persons crowded around the speakers' platform at the new Grand Trunk station Saturday to hear Gov. Wilber M. Brucker and others hail Michigan's first commuter service as a boon to development in the entire North Woodward area. The train which bore the speakers and hundreds of other guests to the celebration from Detroit, Ferndale and Royal Oak may be seen in the background at the right.

—Photo Courtesy Detroit News.



Governor Brucker is introduced to Elizabeth Pollock, queen of the Pageant of Progress, and her Jean Brooks, Phyllis Miller, Ruby Bickford, Patsy Henry, Miss Pollock and Governor Brucker.

—Photo Courtesy Detroit News.



Showing the Birmingham station platform as the special train hundreds of visitors to the celebration. The photo gives a clear view of both platforms, which are connected by an underground tunnel.

—Photo Courtesy Detroit Times.



C. G. Bowker, general manager of the Grand Trunk Western Railway, Mrs. Bowker, and Gov. Brucker and Mrs. Brucker, slight from the special train from Detroit, immediately preceding the ceremonies in front of the station in which both Governor Brucker & Mr Bowker took part.

—Photo Courtesy Detroit Times.

BLAME LOW LAKE LEVELS

Lack Of Water Held Responsible For Large Numbers Of Fish Deaths

Lansing—The lack of water and the low lake levels which occurred at spawning time this year, are the reasons given by the Institute for Fisheries Research of the University of Michigan for the large numbers of fish deaths reported from many inland lakes.

Examination of specimens of fish sent to the laboratories at Ann Arbor and observations made of various inland lakes have confirmed this opinion, Wendell H. Krull, fish pathologist of the institute said in a report.

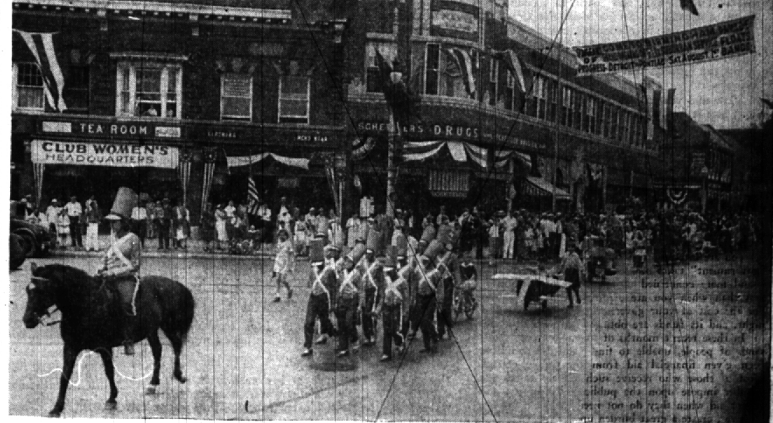
The most noticeable single abnormal condition in the fish has been the increased amount of fungus. "This is in some way associated with the lack of water, but just how is another question," the report said.

Spawning Partly Responsible
Krull believes that spawning through the ice may have had some effect on later fungus attacks. "We know, from specimens which have been sent to us, that many fish are injured in spawning and fishermen will not take the fish with white patches on them."

"These are injured fish which have fungused and under cold water conditions will live for a long time, during which the fungus possibly disseminates many spores which are capable of germinating very readily when the water is warmer."

The low water levels this year have, in all probability, seriously affected fish life. Since the water level was low at the spawning time of common fish found most abundantly in Michigan lakes, and since they are particularly sensitive to water conditions, their spawning activities, no doubt, were interfered with, even to the extent of making some of the normal spawning beds unavailable for fish.

In Lake Mitchell, Westford County, for instance, the black bass did not occupy their spawning beds this spring. "Depriving



A view of part of the children's celebration program, snapped at the corner of Maple and Woodward avenues. The "Wooden Soldiers" winners of first prize for the fair and the evening program will feature the Blue Heaven Girl Revue presented by Henry H. Lueters, Detroit theatrical producer and master of ceremonies.

—Photo Courtesy Detroit Times.

fish of their spawning beds, would, Krull said, increase injuries because of the increased strife among the fish, or at least decrease the resistance among them as a result of fighting and retention of sex products.

Losses Only Normal
These conditions as well as spawning, temporary starvation, changes in water temperature, sudden changes in oxygen content of the water are factors which influence the susceptibility of fish to disease, particularly to fungus which is the only disease that can be held accountable for the unusual fish epidemics this summer.

Most of the losses reported during or just after the spawning season have been considered normal losses by the institute.

These losses look very large, especially in lakes which are productive and support many large fish. At other times the losses looked large because the fish which

die remain out in the lake until carried in by wave action.

Sometimes after there has been no wind for a long time false impressions of the mortality are given because the fish which have died over a period of days wash into shore at one time.

"We suggest that before one says, 'thousands of fish are dying,' that he secure a more definite estimate," the report concludes.

Annual County Fair Set For Aug. 13-15

The annual Oakland County fair the 51st on the Milford grounds is to be held next week, Aug. 13 to 15. Besides the usual display of livestock, farm products and 4-H Club projects, the program will feature a three-day racing program, a three-day base ball tournament and a full pro-

gram of free platform acts each afternoon and evening.

The Rainbow Girls' Band of 10 pieces will be on duty during the fair and the evening program will feature the Blue Heaven Girl Revue presented by Henry H. Lueters, Detroit theatrical producer and master of ceremonies.

Thursday will be children's day and the fair will close Saturday night with an impressive and legal wedding in front of the grandstand.

The admission price has been reduced this year to 25 cents, afternoon or evening.

Naturally Hell is a place where you get a fact notice by every man—Ohio State Journal.

Ninety economists have endorsed a \$1,000,000,000 Federal loan to finance public work. What's more billion dollars to an economist.—Indianapolis News.

1933 Auto Plates May Be Of Copper

The Department of State feels that Michigan's copper mining industry might be benefited by auto-licensing plates made of copper.

The matter will be given careful study and consideration in connection with the 1933 plates, which will be ordered early in 1932. The idea of using copper as a base for the 1933 plates is being considered now in use will have a great bearing on the final decision.

The 1932 plates are being manufactured with a combination of a dark blue background with which black numerals. Subscribe to The Eccentric, \$2.00 per year, two years, \$3.50.

Tourist And Resort Business Seen As Depression Proof

Lansing—Gov. Wilbur M. Brucker's recent reference to the tourist and resort business as being "depression proof" seems to be borne out in the number of visitors and campers using state parks this season, according to the Parks Division of the Conservation Department.

The total attendance at the state's parks last year exceeded 8,000,000 people. It is considered probable that the 1931 figure will run close to or more than the 10,000,000 mark.

The number of campers has been increasing every year. This

is due to the fact that better camping and park facilities are being provided.

Subscribe to The Eccentric, \$2.00 per year, two years, \$3.50.