

School System Aids Village Growth

200 STUDENTS ADDED YEARLY

Five Modern Structures Since 1918 Attract Homes Builders

Perhaps no other single factor in the community has contributed so largely to the growth of this village over the past several years as the Birmingham School system. One of the most completely equipped in the entire Detroit area, it annually serves to attract scores of families from the metropolitan district who desire to take their home in a suburb where the educational demands of their children will be adequately supplied.

Each year since 1927, the average growth in the number of children of school age in Birmingham has been 6 per cent over the preceding year, representing an increase in individual students of nearly 200 every twelve months.

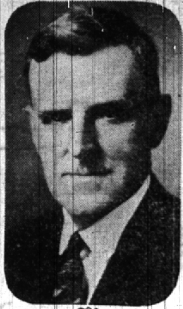
With the advent now of commuter service between Birmingham and Detroit, the drawing power of this community for families who are planning to establish homes in a place where daily will be in short traveling distance of the office and Johnny will have a chance to grow up in the best of days and at the same time be given the opportunity of attending first class public schools, should be twofold.

First School in 1834
The first public school in Birmingham was opened in 1834 in a log school house on Hamilton avenue near Woodward. The second public school was in a frame building at the corner of Chester and West Maple. In 1856 a yellow brick school house was erected at the corner of Southfield and West Maple.

The Hill School at Martin and Chester was finished in 1869 and a high school was established on the upper floor of the new building. David Bemis was principal and there were four other teachers. This building was enlarged and continued in use until 1918.

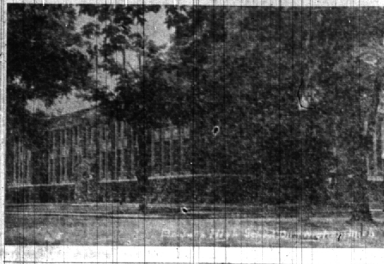
Barnum School was built in 1917 to care for an increase in grade

Superintendent



Clarence Vliet

BALDWIN HIGH SCHOOL



mediately popular with the student body.

The G-3-B plan calls for elementary buildings to spaced at intervals not more than one-half mile from the homes of most pupils, junior high buildings 1 1/2 miles and one or more senior high schools as the size of the system may require.

It is in the furtherance of this plan that all sites have been selected and buildings erected since 1918. It has given the district five modern buildings—Barnum, Baldwin, Adams, Pierce and Quanton— as well as a site on East Lincoln avenue for the next grade school. The Hill building has been abandoned for grade use and will be used as an administration building and as a relief building for Baldwin High School.

All improvements embody every latest improvement in school architecture. They are drop roof, concrete floors, tile and terra-cotta, centrally located and ventilated. They contain modern gymnasium and auditoriums which have complete school and community use. Their construction has been 21,000,000. The Barnum School swimming pool is the last word in sanitary and hygiene construction.

The course of study offered in Birmingham is modern and up to the minute. Free text books permit of variation to suit the needs of the particular grade in average towns.

Business Manager



Louie Randall

of the particular grade in average towns. The junior high school covers grades 7-8 and 9, and offers a differentiated course of study for adolescent boys and girls. It due, Albion, University of Wisconsin to capitalize and fix business, Marygrove, Dartmouth, University of Virginia, Oberlin and many others. Recently completed values show that Birmingham High school graduates do superior work in the various colleges attended.

ing tendencies and trends which later become direct lines of action. Manual training, cooking, sewing, art, music, and commercial work are new avenues for expression available in the Baldwin work, made to feel at home in the school organization.

Classes Are Small
Small classes and superior children make for very rapid progress in all regular academic grade work. Rerouted tests demonstrate that Birmingham children are far in advance of the norms established for a particular grade in average towns.

Attend Many Colleges
Graduates are sent on diploma recommendation to such institutions as the University of Michigan, Michigan State College, Pennsylvania State College, Park College, University of Wisconsin, University of Michigan, University of Virginia, Oberlin and many others. Recently completed values show that Birmingham High school graduates do superior work in the various colleges attended.

University of Virginia, Oberlin and many others. Recently completed values show that Birmingham High school graduates do superior work in the various colleges attended.

Administrative affairs of the system are directed by a Board of Education which consists of Ray A. Palmer, president; Dr. W. G. Hutchinson, secretary; John E. Martin, treasurer; Earl G. Potter, trustee; and P. F. McKinney, trustee. Clarence Vliet is superintendent of the schools and Louie Randall is business manager.

1918 and the enrollment to 7384.

G-3-B Plan Begun
Baldwin High School was made possible by a gift from Martha Baldwin who died in 1913 and who devised "all the balance and residue of my estate to go towards the construction of a public school in Birmingham, Mich., which said school shall install and maintain an auditorium, and at least two free public baths, one for men and one for women—said public school is to be named the Baldwin School."

At this time, under the direction of Superintendent Clarence Vliet, the junior high school G-3-B plan was begun and the entire course of study reorganized. Physical education, domestic science, instruction in art and music, manual training and other lines of work were introduced and became immediately popular with the student body.

BOARD OF EDUCATION



Ray A. Palmer, president



F. F. McKinney



Dr. W. G. Hutchinson, secretary



Earl G. Potter

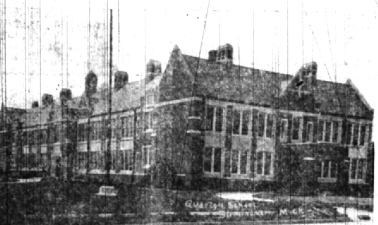


John E. Martin, treasurer

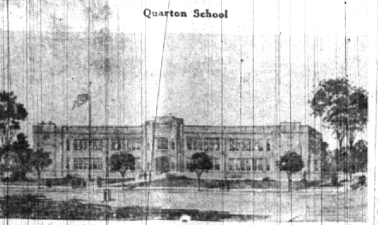
LUNCHEON PLANNED FOR CLUB WOMEN

Members of women's clubs in all North Woodward communities are invited to meet at 11:15 M. Saturday at Gray's Food Shop, 112 South Woodward avenue, for a get-together luncheon. Mrs. C. J. Bonnus, president of the Birmingham Women's Literary Club, is in charge of the gathering which is planned to give opportunity for a closer acquaintance among club women of southern Oakland County. Reservations for the luncheon should be made in advance.

Two of Birmingham's New Schools



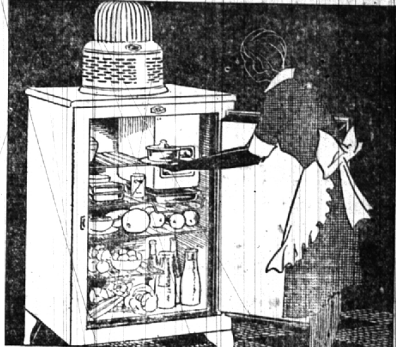
Quanton School



Pierce School

The ICE-O-MATIC

... has extra-large food-storage space ... and conveniently arranged, right-height shelves



A VERY SMALL AMOUNT DOWN

... Places a Splendid Ice-O-Matic in your home! Surely no need to go on any longer with the unsatisfactory and often unsanitary and unhealthy old-fashioned refrigerator stations. VERY EASY Monthly Terms

WE WILL ACCEPT YOUR OLD REFRIGERATOR, RADIO OR PIANO AS PART PAYMENT

TWELVE years of electric refrigerator manufacturing ... twelve years of developing, refining, improving, back of the Ice-O-Matic of today. In it you will find everything that makes for greatest satisfaction in electric refrigerator ownership. You don't sacrifice one desirable feature to gain another when you get an Ice-O-Matic ... it combines ALL the best features of ALL electric refrigerators! A great variety of sizes and styles to select from. The Ice-O-Matic is moderately priced; its stylish cooling efficiency makes it most economical in operation ... it more than repays its cost by savings on food and ice bills.

THE ICE-O-MATIC ... is backed by Grinnell Bros' reputation, reliability and resources ... and by a 3 Year Double Guarantee!

QUALITY MERCHANDISE FOR FIFTY YEARS
GRINNELL BROTHERS
SEMIWAY REPRESENTATIVES
144 SO. WOODWARD AVE., BIRMINGHAM
A visit places you under no obligation

In Oakland County ... and imbued with the spirit of the TIME

A comparatively few short years ago the Silent Automatic opened a Factory Branch in Birmingham, to better serve the residents of Oakland County.

Since then, it has been a genuine satisfaction for us to contribute, in our way of ending all heating cares, to the happiness of many residents in the North Woodward district.

In Oakland County, we feel that we are not only a Sales and Service Branch, the local representatives of a great Oil Burner Company, but that we are a very definite part of the community life. And it is with constantly increasing pleasure that we continue to serve.

SILENT AUTOMATIC SALES CORPORATION
IN BIRMINGHAM—101 WEST MAPLE AVENUE—PHONE 2310
Oakland County branch

SILENT AUTOMATIC
THE NOISELESS OIL BURNER

The Harper Method HAIR SHOP

Scientific treatments for the skin, hair, and nails.
Skilled Harper Method Operators assure absolute thoroughness in all permanent waving and beauty services.
One treatment and you will understand why women who demand the best patronize Harper Method Shops exclusively.

Telephone 1015

QUANTON BUILDING

Quickly! Our ambulance is always on duty. An emergency call is answered at emergency speed. Our ambulance is used exclusively for ambulance work.

It is not often that one has to call an ambulance, but when the need does arise, knowledge of our ambulance service may be the means of saving a life.



MEMBER THE ORDER OF THE COLORED MEN
S.O. WYLIE BELL
FUNERAL DIRECTOR
620 East Maple
Birmingham, Mich.
PHONE 49

S
The Shopping Center for Fine Foods at Lower Prices!

SFIRE BROS. MARKET
180 WEST MAPLE AVENUE
FREE PARKING for Patrons in the spacious area just to the West of the Market