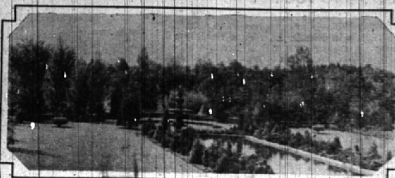
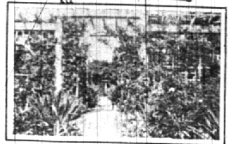


SCENES OF BEAUTY FROM NEARBY GARDENS



Both the hand-made loveliness and natural beauty of some of the gardens in Birmingham and the Hills are evidenced in these pictures. Upper left shows a rock garden in the making on the estate of Montgomery Whiting on Abby road. A scene of combined beauty and dignity from the Cranbrook estate of George G. Booth is shown in the upper center photo, and a rock terrace leading to a formal garden on the estate of Draper Allen at the corner of Westwood and Pine roads is pictured at the upper right. Lower right shows the rose arbor in the garden of Miss Addie Sly at West Maple and Wing Lake roads.



Gardens Add To Joy Of Birmingham Home Life

Thirty-seven minutes from the heat of the city in the cool tranquility of his Birmingham garden. One of the most universal interests in Birmingham is gardening. Virtually every home boasts

a garden, be it of the informal cottage type with its hollyhocks and rustic fence, or in keeping with the stately formality of the mansion.

To visit gardens in Birmingham and Bloomfield Hills is to discover a new world of undreamed beauty and stimulating variety. For there is every imaginable type, and the visitor will find himself wishing for a garden of his own.

Many formal gardens are being purchased to make

his dream-garden come true, he may plan an extensive formal garden, or he may create for himself the atmosphere of old England or rural France by remodeling a farmhouse and planning a garden to carry out the scheme. There are the gardens at Cranbrook, the estate of George G. Booth, among the largest and most beautiful in the Hills, enhanced by a Greek theater in a sylvan setting, a pillared pavilion, and a pool that mirrors surrounding beauty.

One hears much of rock gardens nowadays, but the term covers a multitude of sizes. A rock garden may be a diminutive affair or it may be terraced in varying levels to cover an entire hillside.

Hillside Transformed

Such is the garden of Mrs. T. W. Talliaferro at Trowbridge Farms, one of the largest rock gardens in Bloomfield Hills. Four years ago, Mr. and Mrs. Talliaferro

purchased one of the old Trowbridge farms. There was nothing today but a swamping hillside. It was enough, however, to enable Mrs. Talliaferro to visualize the garden she created.

Many Others

It is a garden in which one could spend many hours discovering new beauties among the rocks. Other gardens of unusual loveliness in the Hills are those at Erbarbank, the estate of Mrs. and Mrs. W. P. Barbour; the gardens on the estates of Col. Edwin S. George, Gustavus B. Pope, Albert J. Stebbins, G. A. Newcomb, Jr., S. V. Norton at "The Collins" on Lone Pine road; J. H. Muzzy and many, many others.

Birmingham also offers a wide variety in gardens large and small, formal and informal. One of the most charming of cottage gardens modeled on the Federal American plan, is that of Mr. and

Mrs. Albert A. Clark on Adams road.

Four years ago, an old farmhouse stood on the summit of what was once called Strawberry Hill. It was surrounded by rickety and ancient farm buildings with a rather unattractive barnyard. Today it is a farmhouse that was a charming type of early American cottage, and the garden a faithful reproduction of what gardens were a hundred years ago.

Sunken Garden Charms

Charming indeed is the loveliness of Mrs. R. D. Baker on Southfield road with its series of pools, strung together like crystal beads, with sparkling little waterfalls. Another sunken garden and delightful pool is to be found on the grounds of Mrs. Charles E. Lewis of Hawthorne road. A particularly interesting feature of Mrs. Lewis' garden is the pear tree trained against the wall, after the French fashion.

The gardens of Miss Addie Sly on Wing Lake road invite those seeking beauty among roses, iris and delphinium. A unique feature is Miss Sly's cutting garden, which once a barnyard. With its lovely colors blending and contrasting, it resembles a huge mosaic.

Border gardens used as a frame for velvet lawns, have been artistically developed by Mrs. Craig H. Riskey, Arlington road; Mrs. F. J. Hysham of Hawthorne road; and Mrs. E. W. Osborne of Herce street; Mrs. H. J. Muehlman of Southfield road; Mrs. John T. Edgerly of Adams road; Mrs. Louis Hirschberg of Arlington drive, and many others.

When-- Worthy To Be Called YOUR HOME

There will be a garden... inviting... fascinating... set with distinctive shrubbery, trees and flowers. It will reflect skill and taste in planting. It will be truly your garden... your home.

EMERSON C. BROWN CO.

9 Years in Birmingham

Landscape Gardening

Designing

Planting

Constructing

Tree Surgery

Spraying

Trimming

Tell Your Merchant You Saw His Advertisement in THE ECCENTRIC

... from an Ohio hillside ... to a Birmingham garden

Five Matched Pairs of

Pyramidal Arborvitae

Recently discovered, this block of trees is now available for the Birmingham-Bloomfield district. Forty years old... these evergreens are compact and a rich green, so typical of this finest of columnar arborvitae.

We are constantly collecting large, rare, and unusual trees and shrubs from old nurseries and old estates.

Robinson Brothers
Landscape Contractors
1407 N. Woodward Ave. Telephone 2282-J

Serving Birmingham and Bloomfield Hills

... designing distinctive landscapes, featuring

ROCK GARDENS

introducing the natural and beautiful stone transformation of other States

WOODWARD GARDENS
1145 N. Woodward Ave. Phone 642

For the Modern Gardener Equipment and Supplies

Hose - Tools - Mowers
Fencing - Trellises
Fertilizers - at a moderate cost.

THE Birmingham Hardware Co.
152 N. Woodward Ave. Phone 200

At the Birmingham Lawn & Golf Supply

MOTO MOWER

Pennsylvania LAWN MOWERS

Hardie Sprayers

GOLF SUPPLIES

152 S. Woodward Ave. Phone 123

Over 10 Years

—in Birmingham with one policy of Moderate Prices and

DEPENDABLE FERTILIZERS
SPRAY MATERIALS AND
FUEL

Parks Coal Co.

232 High St. Phone 2020

One Reason Why Birmingham Gardens are - - - beautiful

113,570 Pounds of

VIGORO

Complete plant food

USED IN AND AROUND BIRMINGHAM THIS YEAR

Distributed by McClelland Feed & Salt Co. Phone 314

KLEIN LANDSCAPE CO.

320 WABEEK BLDG.

BIRMINGHAM MICHIGAN

Spacious Home Grounds

HERE in the Birmingham-Bloomfield area one can own spacious grounds for the price of a city lot, and a conscientious landscape arrangement of the home grounds lends much to the charm of the home.

One may add two or three Outdoor Living Rooms to the home and create an atmosphere of privacy and charm.

We have been called in to beautify many homes in the Greater Detroit area and believe we can satisfy your requirements, whatever they may be.

For individual plantings we offer 200 acres of the finest stock available, located conveniently for inspection and delivery.

Coryell prices are reasonable.

CORYELL NURSERY

230 Acres of Beauty

Birmingham 2206
1375 West Maple Avenue

COMPLETE LANDSCAPE SERVICE

AT WANGBERG GARDENS

For Fall Planting (Beginning in August)

Now Displaying Selected EVERGREENS

All in exceedingly fine condition helped by the numerous rains during the summer. May we help you with your selections and planting.

PERENNIALS — READY to plant now! Choose from our stock!

Iris in choice varieties. Columbinas and others ready for immediate planting. This season is ideal for the planting of perennials.

Special Arbors, Trellis, Garden Furniture

For Fall planting information, visit our booth during the Fair at Progress. See our display and our unusual Special Offering.

SOUTHFIELD ROAD
Telephone: 2041-W - 2041-R