

150 MAPLE TREES TO BE REPAIRED

Commission Approves \$750 Expenditure For Work On Foliage

Upon the motion of Commissioner Lewis said: "The Village Commission Monday night authorized the expenditure of \$750 for the 'topping' of 150 soft maple trees in the Village which need such treatment as suggested by James W. Parry, village manager.

In offering his resolution Commissioner Lewis said: "The committee is convinced that the trees need the attention recommended by the village manager. Many of these trees are in danger of splitting and 'topping' them prevents them from falling over when the first strong wind blows. There is no question in my mind as to the necessity for the work and it is to me that by passing this resolution we're doing only what is badly needed.

"I think we're neglecting the trees in this town. The planning commission has undoubtedly given the matter consideration, and I think the work should be done as soon as possible. I believe that he believed the work should be done only by the most competent men obtainable who could be obtained at the present time for less cost than under ordinary conditions.

Commissioner Maurice Lpman suggested that the job of repairing the trees be opened to bids by tree surgeons in the vicinity but by James W. Parry, village manager, reported that the work could be done competently by village workers under the direction of Mr. Olin G. Olin.

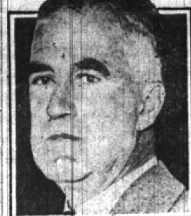
SKATING RINK REPORT ASKED

James W. Parry, village manager, Monday was instructed by the village commission to prepare a report of the approximate cost of operating and maintaining a municipal skating rink this winter at Barton Lake. The request for a report was made following the receipt of a letter from the Walsh, James & Wasey Co., realtors, upon whose property the lake is situated. Mr. Parry outlined briefly a few of the difficulties which necessarily arise from the maintenance of the rink and cited some of the approximate costs for lighting, equipping and directing the project.

Only A Leading Man At the end of the outdoor scene the perspiring film director dropped exhausted on the grass. As he mopped his forehead he looked around at the heap of clothes and saw a dummy of old "Heavenly" he yelled, "who was it we threw over the cliff?"

12-DAYS IS A LONG TIME... The Eccentric has been offering the contents of the area a newspaper and printing service... The signs outline what privileges the hunter has through possession of a deer license...

Directs Aid For Jobless



Colonel Arthur Woods, above, former police commissioner of New York, is chairman of the committee. His committee which will cooperate with municipal and state committees in an effort to aid the unemployed. Woods formerly was organizer of unemployment in 1921.

List of Mistakes

- Solution to Puzzle Picture on Page 1 of this Section.
- 1—Draw knife would not hang on nail in that position.
 - 2—Light bulb is not in center.
 - 3—Hatchet could not be driven into bench as shown.
 - 4—One shank of brace too long.
 - 5—Window has hinges both top and bottom.
 - 6—Sign on paint can says "gray."
 - 7—One shelf of bookcase is narrow.
 - 8—Shovel handle is twisted.
 - 9—Line of baseboard shows through shawl.
 - 10—Line indicating corner of room incorrect.

Adams Frosh Play Cast Is Selected

The cast for the freshman play to be given in Adams school auditorium, Thursday, December 4, has been announced by the director, Mrs. Ann Corvrent. "Only Me" is the name of the production. The leading girl's part in the play will be played by Dorothy Ray. The leading man's part will be portrayed by Bob Sabom. The rest of the cast will include the following students: Mary Ann Reed, Esther Berkeley, Marvel Carson, Carol Densley, Fred Boynton, Fred Cushing, and Henry Foley.

Hunters Given Advice By State

LANSING, Nov. 13.—Warnings, caution, and advice to deer hunters have been posted in hotel lobbies, postoffices and other places where sportsmen gather, throughout the "deer country" this month by the Department of Conservation. The signs outline what privileges the hunter has through possession of a deer license; what the license does not permit; advice to prevent accidents and advise as to what to do if the hunter becomes lost in the woods.

Church News

FIRST BAPTIST CHURCH

Willie Bates St. David Leonard Woodward, B. D., Minister
911 Bates St.

This church is among you as one that serveth. In the Father's name we bid you welcome at the following services of worship, 10 a. m. Sunday School, 11 a. m. Morning Worship.

Both young and old are provided with the best possible equipment and teachers. 11 a. m. Morning Worship. "The Implications of the Fatherhood of God," the second of the sermons on the Lord's Prayer, will be the pastor's message. Music beautiful and appropriate will be given by our choir under Mr. Frederick Prodhoe's direction.

6:30 p. m. Young Peoples Union. Both groups of young people meet at the same hour in separate rooms. A good lesson and a lively discussion will be given here 7:30 p. m. Evening Service.

The pastor is giving a very interesting and helpful series of sermons on the Ten Commandments. "Taking the Name of the Lord in Vain," is the theme of the evening. You will enjoy the life-story of John Newton and also the singing of his great hymns. The special music will be of fine quality as usual.

Fellowship Church Dinner: Wednesday, 6:30 p. m. An old-fashioned "Pot Luck Dinner" will be followed by an exceptionally fine devotional and missionary program. Everybody invited. You may come expecting several surprise features.

SAINT JAMES' EPISCOPAL Rev. Warner L. Forsyth, Rector
Phonics, Rectory 189; Office 2356
Twenty-second Sunday after Trinity.

8 a. m. Holy Communion, 11 Morning Prayer and Sermon. Church School, 9-45. Junior Classes; 11, Primary and Kindergarten.

No evening Service. UNITED PRESBYTERIAN CHURCH
Henry S. Evans, Minister
Bible School, 10 a. m. Morning Worship, 11:15 a. m.

We will continue our study of the Gospel according to John in this service. Even if you know all about this book, it will do you good to come and worship. Everybody welcome.

CHRISTIAN SCIENCE CHURCH Chestnut and Willets Streets
Church each Sunday at 10:30 a. m. and 7:30 p. m.
Sunday School, 10:30 a. m. Wednesday evening at 8 o'clock.

Reading room in the church building is open from 11:30 a. m. until 4:30 p. m. daily except Sundays and holidays. It is also open on Wednesdays before and after the service.

"Adam and Fallen Man" was the subject of the lesson-sermon in all Christian Science Churches on Sunday, November 9.

Among the citations which comprised the Lesson-Sermon was the following from the Bible: "Mark the perfect man, and behold the upright: for the end of that man is peace" (Ps. 37:37).

The Lesson-Sermon also included the following passage from the Christian Science textbook, "Science and Health with Key to the Scriptures," by Mary Baker Eddy: "Mortals have a very imperfect sense of the spiritual man and of the infinite range of his thought. To him belongs eternal life. Never born and never dying, it were impossible for man, under the government of God in eternal Science, to fall from his high estate" (p. 258).

Epworth League, 6:15 p. m. For the Young People. Wednesday Evening, 7:45 p. m. Fellowship Service. Mr. Atkins will continue the discussion of the New Testament as outlined in the Abington Commentary.

FIRST PRESBYTERIAN CHURCH
10 a. m. Sunday School. Classes for adults and children. 11 a. m. Morning Worship. Dr. Arthur G. Walker, of Detroit, will occupy the pulpit.

6:15. Young people's social hour and meeting. CHAPEL OF THE HOLY NAME
Harmon at Woodland Rev. William W. Ryan, Pastor
Sunday Masses, 7:30, 9, 10:30, 12.

Holy Day Masses, 7, 9. Daily Mass, 7. Baptisms Sunday at 2 p. m. Confessions: Saturday after-

noon, 4 to 6; Saturday evening, 7:30 to 9; before the early Masses.

CHRIST CHURCH GRANBROOK Rev. Dr. S. S. Marvin, Pastor
Rev. W. H. Aulenbach, Assistant
11 a. m. Prayer and Sermon. 4:30 p. m. Yeggens. Holy Communion Service First Sunday of Each Month.

Sinking of a street in Marquette was found due to the caving in of an underground chamber dug by rats.

BUSINESS MEN of Birmingham and Bloomfield Hills, who have offices in Detroit, like to engage the services of The Eccentric's printing department for stationery, forms, or direct mail pieces. The Eccentric does much of such work—and it is very conveniently located for its friends to visit in order to get GOOD PRINTING, QUICKLY DONE, at a REASONABLE COST.

—Adv. 271* Tell Your Merchant You Saw His Advertisement in THE ECCENTRIC

Epworth League, 6:15 p. m. For the Young People. Wednesday Evening, 7:45 p. m. Fellowship Service. Mr. Atkins will continue the discussion of the New Testament as outlined in the Abington Commentary.

FIRST PRESBYTERIAN CHURCH
10 a. m. Sunday School. Classes for adults and children. 11 a. m. Morning Worship. Dr. Arthur G. Walker, of Detroit, will occupy the pulpit.

6:15. Young people's social hour and meeting. CHAPEL OF THE HOLY NAME
Harmon at Woodland Rev. William W. Ryan, Pastor
Sunday Masses, 7:30, 9, 10:30, 12.

Holy Day Masses, 7, 9. Daily Mass, 7. Baptisms Sunday at 2 p. m. Confessions: Saturday after-

noon, 4 to 6; Saturday evening, 7:30 to 9; before the early Masses.

CHRIST CHURCH GRANBROOK Rev. Dr. S. S. Marvin, Pastor
Rev. W. H. Aulenbach, Assistant
11 a. m. Prayer and Sermon. 4:30 p. m. Yeggens. Holy Communion Service First Sunday of Each Month.

Sinking of a street in Marquette was found due to the caving in of an underground chamber dug by rats.

BUSINESS MEN of Birmingham and Bloomfield Hills, who have offices in Detroit, like to engage the services of The Eccentric's printing department for stationery, forms, or direct mail pieces. The Eccentric does much of such work—and it is very conveniently located for its friends to visit in order to get GOOD PRINTING, QUICKLY DONE, at a REASONABLE COST.

—Adv. 271* Tell Your Merchant You Saw His Advertisement in THE ECCENTRIC

Epworth League, 6:15 p. m. For the Young People. Wednesday Evening, 7:45 p. m. Fellowship Service. Mr. Atkins will continue the discussion of the New Testament as outlined in the Abington Commentary.

FIRST PRESBYTERIAN CHURCH
10 a. m. Sunday School. Classes for adults and children. 11 a. m. Morning Worship. Dr. Arthur G. Walker, of Detroit, will occupy the pulpit.

6:15. Young people's social hour and meeting. CHAPEL OF THE HOLY NAME
Harmon at Woodland Rev. William W. Ryan, Pastor
Sunday Masses, 7:30, 9, 10:30, 12.

Holy Day Masses, 7, 9. Daily Mass, 7. Baptisms Sunday at 2 p. m. Confessions: Saturday after-

noon, 4 to 6; Saturday evening, 7:30 to 9; before the early Masses.

CHRIST CHURCH GRANBROOK Rev. Dr. S. S. Marvin, Pastor
Rev. W. H. Aulenbach, Assistant
11 a. m. Prayer and Sermon. 4:30 p. m. Yeggens. Holy Communion Service First Sunday of Each Month.

Sinking of a street in Marquette was found due to the caving in of an underground chamber dug by rats.

BUSINESS MEN of Birmingham and Bloomfield Hills, who have offices in Detroit, like to engage the services of The Eccentric's printing department for stationery, forms, or direct mail pieces. The Eccentric does much of such work—and it is very conveniently located for its friends to visit in order to get GOOD PRINTING, QUICKLY DONE, at a REASONABLE COST.

—Adv. 271* Tell Your Merchant You Saw His Advertisement in THE ECCENTRIC

New Reduced Ambulance Rates

To Pontiac or Royal Oak... \$3.00
To Highland Park... 6.00
To Detroit... 8.00

Extra Mileage 50c a Mile One Way

A. C. ADAMS

FUNERAL DIRECTOR

807 North Woodward Ave. Phone 1138

CIGAR SPECIALS

Special Friday and Saturday Only

One lb. Edgeworth Tobacco Choice \$1.00 Pipe

\$2.25 value all for \$1.98

All 15c tobacco... 2 for 25c
All 10c Scrap... 3 for 25c

Special Prices on all Pound Tobacco

SODA FOUNTAIN

A tasty sandwich—a thirst satisfying drink—or one of our delicious lunches are all served with the same immaculate and gratifying aptitude.

MICHIGAN'S LOWEST CUT-RATE DRUG PRICES

Economical DRUG STORES

Supplies for The Women

FACE POWDERS	
\$1.00 Coty Face Powder	95c
60c Pompeian Face Powder	49c
50c Luxor Face Powder	39c
\$1.00 Armand's Face Powder	89c

BATH SALTS	
\$1.00 St. Denis Bath Salts	76c
\$1.00 Houbigant Bath Salts	89c
\$1.00 4711 Bath Salts	89c
50c Schratz Bath Powder	43c
50c Bathasweet	43c

MANICURIALS	
35c Cutex Nail Polish	29c
50c Glazo	43c
35c Hyglo Nail Preparations	29c
35c Cutex Cuticle Remover	29c

FACIAL CREAMS	
50c Woodbury Creams	39c
\$1.00 Krank's Lemon Cream	89c
65c Pond's Creams	39c
\$2.00 Pinauds Cream	\$1.89

TOOTH PASTES	
60c Forhan's	39c
50c Ipana, 3 for	\$1.00
50c Kolyms, 3 for	\$1.00
\$1.00 McArthur's	95c
50c Mulcadent Paste	39c

DEPILATORIES	
\$1.00 Neet	83c
50c De Miracle	39c
\$5.00 Zip	\$4.69
\$1.00 Delatone	89c
50c X Bazin	45c

Deep Cut Prices Friday & Saturday

LISTERINE	
\$1.00	67c

\$1.00 Squibb Petrolatum	76c
\$1.50 Agarol	98c
50c Pebecco	31c
\$1.00 Zonite	76c

75c P. D. Mineral Oil	46c
40c Castoria	24c
\$1.50 Petrolagar	98c

\$1.00 Gillette Blades	79c
------------------------	-----

Candy Special

Broxi Buddies
5 lb. Satin Shelled Nuts and Fruits

98c

One lb. Chocolate Covered Peppermints 39c
One lb. Chocolate Covered Cherries 49c

OOH! OOH!
MAMMA DOLL
Large Size
\$1.49

Popular Fiction

All the latest in popular fiction by your favorite author—Doris, Van Dyne, Burroughs and many others.

75c

Supplies for The Men

SHAVING CREAMS	
65c Barbasol	43c
50c Williams Shaving Cream	38c
35c Palmolive Shav. Cream	28c
40c Squibb's Shaving Cream	36c

RAZOR BLADES	
50c Durham Duplex	39c
70c Gem Blades	62c
\$1.00 Auto Strop Blades	77c
75c Shick Blades	69c

TALCUM POWDERS	
25c J. & J. Baby Powder	16c
25c Mennens Baby Powder	19c
50c Mavis Talc	39c
\$1.50 Coty Bath Powder	\$1.39

LOTIONS	
50c Williams Aqua Velva	39c
\$1.00 Ambrosia	89c
50c Frostings	39c
\$1.00 Jergens Lotion	79c

SHAMPOOS	
\$1.00 Watkins Coconut Oil	89c
\$1.00 Hair-A-Gain Shampoo	89c
60c Mar-a-Oil Shampoo	54c
75c Pinaud's Shampoo	69c
60c Fitch's Shampoo	54c

HAIR TONICS	
\$1.00 Vitalis	89c
60c Danderine	49c
70c Vaseline Hair Tonic	59c
\$1.00 Lucky Tiger	89c



Suppose

fire should visit your home tonight... or burglars... or disaster should overtake you? Would your valuables be safe? The small cost of a safety deposit box in the First State Savings Bank is the best investment against loss you can make.

Roomy safety deposit boxes for as little as \$2 per

First State Savings Bank

BIRMINGHAM, MICH.

Resources Over 3 1/2 Millions

WE PAY 4% ON SAVINGS

Stationery Specials

\$1.00 Worthall Stationery... 69c
50c Eaton Correspondence Cards... 39c
50c Flozelle Stationery... 39c

Lined envelopes

Hospital Supplies

\$1.75 Excello Combination Syringe... \$1.49
One lb. Hospital Cotton... 59c
50c J. & J. Adhesive Tape... 39c
\$1.50 Clinical Thermometer... \$1.29