

## Gardening

You've got to dig from week to week to get results or roses, garden.

**TREES**  
I think that I shall never see  
A poem lovely as a tree.  
A tree whose hungry mouth is  
pre-  
sented  
Against the earth's sweet flowing  
breast.

A tree that looks at God all day,  
And lifts her leafy arms to pray;  
A tree that in Summer wears  
A nest of robins in her hair;

Upon whose bosom snow has lain;  
Who intimately lives with rain.

Poems are made by fools like me,  
But only God can make a tree.  
—JOYCE KILMER  
from "Trees and Other Poems."

### VEGETABLES FROM YOUR OWN GARDEN ARE BEST

The combination of exercise and good food makes the vegetable garden a splendid investment in good health. Long hours of activity spent in making plants grow is a benefit to the whole family.

As in other lines of endeavor, a

good foundation is essential. For this reason, the gardener should make certain to buy the highest quality of seeds obtainable. The preparation of the soil, the effort spent in cultivation and means taken to discourage insects will be in vain if poor seeds are used as a short sighted economy.

Not only is it possible to reduce the cost of a family's food materially by taking advantage of the possibilities of a home garden, but the satisfaction of having a supply of fresh vegetables near at hand, so that, regardless of market conditions, the list may be varied, is something which cannot be measured in dollars and cents.

Fresh vegetables from the garden are not subject to deterioration. Many vegetables lose their characteristic flavor when packed within a few hours after gathering, but can always be had fresh if grown at home. By means of the home garden the producer of the vegetable supply for the family is directly under control and in some cases this is the only way to secure fresh produce.

Prune the rose bushes removing all the dead branches. The strong shoots should be cut back to three or four eyes.

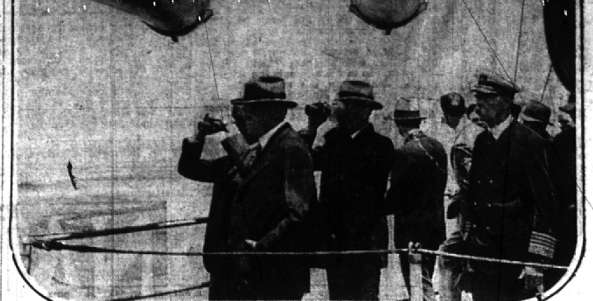
erbis, bullheads and leaflets of the baby ramblers because their flowers resemble those of the true ramblers, do not ramble; they are small bushes. Unlike true ramblers they have a long season of bloom—June to November. They make excellent low hedges. Good varieties are Parle d'Or (crayon yellow), Baby Dorothy (pink), Eblouissant (twelve crimson), Katherine Zinner (pure white).

Do not trim existing shade trees until after the first of July.

### GOVERNMENT ISSUES MANY AGRICULTURE BULLETINS

A partial list of available farmers' bulletins and leaflets of the United States Department of Agriculture, which may be obtained from the superintendent of documents, United States Government Printing Office, Washington, D. C., at 15 cents per copy:

Two hundred fifty-four, cucumbers; 289, beans; 414, onion culture; 414, corn cultivation; 438, cabbages; 434, onion seeds and sets; 760, roses for the home; 828, asparagus; 887, raspberry culture; 901, everbearing strawberries; 917, growing peaches; 937, farm garden in the north; 1028, straw-



President Hoover became the first president to witness a naval armada at sea when he reviewed the fighting ships of the United States navy from the bridge of the new cruiser U. S. S. Salt Lake City of the Virginia Capes recently. Shows above with guests bristling over their heads are President Hoover; at his right, Secretary of Navy Charles F. Adams; behind the president, Assistant Secretary of Navy Ernest L. Jahncke; and at the extreme right, Admiral C. F. Hughes, chief of naval operations.

### VILLAGE COMMISSION PROCEEDINGS

Minutes of a regular meeting of the Village Commission held Monday, May 25th, 1930 at 8 P. M.

Present: President Allen, Commissioner Lewis, Allen, Tucker, Connelly, Hubert and Lawson.

Absent: None.

Minutes of meeting held May 19th, 1930 approved as printed.

220—Moved by President Allen that whereas May 25, 1930 was fixed by this Commission as the time for the meeting to hear suggestions and objections to the construction of water mains on McBurney, Pine and Kimberly Roads within the boundaries of Allendale Gardens, in the Village of Birmingham, and due notice of the meeting given in the manner required by law to each person owning property liable for special assessment for said work, and on this 25th day of May, A. D. 1930, a public hearing was held for the purpose of making suggestions and objections to the proposed improvement.

Be it further resolved that Special Assessment District No. 289 is hereby established to consist of all abutting lots and parcels of land except lots facing Chestnut Avenue, upon which be levied and spread according to benefit.

Be it further resolved that the Village Manager and now on file with the Village Clerk and now on file with the Village Clerk and now on file with the Village Clerk.

Be it further resolved that the Village Manager be authorized to execute and carry out the provisions of the ordinance.

Be it further resolved that the Village Manager be authorized to execute and carry out the provisions of the ordinance.

Be it further resolved that the Village Manager be authorized to execute and carry out the provisions of the ordinance.

Be it further resolved that the Village Manager be authorized to execute and carry out the provisions of the ordinance.

Be it further resolved that the Village Manager be authorized to execute and carry out the provisions of the ordinance.

Be it further resolved that the Village Manager be authorized to execute and carry out the provisions of the ordinance.

Be it further resolved that the Village Manager be authorized to execute and carry out the provisions of the ordinance.

Be it further resolved that the Village Manager be authorized to execute and carry out the provisions of the ordinance.

Be it further resolved that the Village Manager be authorized to execute and carry out the provisions of the ordinance.

Be it further resolved that the Village Manager be authorized to execute and carry out the provisions of the ordinance.

Be it further resolved that the Village Manager be authorized to execute and carry out the provisions of the ordinance.

Be it further resolved that the Village Manager be authorized to execute and carry out the provisions of the ordinance.

Be it further resolved that the Village Manager be authorized to execute and carry out the provisions of the ordinance.

Be it further resolved that the Village Manager be authorized to execute and carry out the provisions of the ordinance.

Be it further resolved that the Village Manager be authorized to execute and carry out the provisions of the ordinance.

Be it further resolved that the Village Manager be authorized to execute and carry out the provisions of the ordinance.

Be it further resolved that the Village Manager be authorized to execute and carry out the provisions of the ordinance.

Be it further resolved that the Village Manager be authorized to execute and carry out the provisions of the ordinance.

Be it further resolved that the Village Manager be authorized to execute and carry out the provisions of the ordinance.

### REMOVE DERRICK ON OLD WELL SITE

Commissioners Agree To Pay Cost Of Clearing Land On Redding Road

Declaring that "inasmuch as the village was acting to remove untidily the cast and other debris in an effort to improve the appearance of the village," Commissioner Charles E. Lewis Monday night offered a resolution that the village pay \$170 for the removal of a derrick, tool house and well site on Redding road. The resolution was passed.

In his communication to the commission, William F. Ward, of the well-drilling company, explained that he would agree to the removal of the property at that price on condition that the action might not prejudice the litigation in Circuit Court between him and the village.

Complaints that the presence of the derrick, tool shed, etc., created an unsightly condition were received by James W. Parry, village manager, from property owners and real estate agents.

Because George L. Merson of Glasgow exacted exorbitant rent from tenants of a house he bought at a low price, his taxes were increased more than 1,000 per cent.

### Planting Headquarters

For 25 years some of our customers have turned us their planting headquarters both for well grown stock and planting advice. Each year we have added to our planting facilities and added new customers.

All of our 200 acres of well grown stock are within an hour's drive of our Detroit and suburban customers. You will find that it pays you well to drive out.

### THE CORYELL NURSERY

Headquarters at 1301-1481 WEST MAPLE AVE., BIRMINGHAM

Nurseries at BIRMINGHAM - UTICA - SOUTHFIELD

### The Garden & Landscape Company

GRASS SEED GARDEN SEED FERTILIZERS

Trees, Shrubs, Plants—Hardy Varieties for this District—Supplies and Accessories

GRASS SEED. PEAT, \$2.00 for 100 lbs., essential soil conditioner for lawns, shrubs and gardens.

VIGOR. ACME ALL ROUND SPRAY. STARR'S PLANTS. Garden stakes and labels.

Birmingham Store and Display Grounds. WOODWARD AND WILLETT'S

Call Your Merchant You Saw His Advertisement in THE BIRMINGHAM ECCENTRIC

### Notice of Troy Township Board of Review Meeting

Notice is hereby given that the Board of Review for the Township of Troy will meet in the Troy Township Hall, on

JUNE 3 and 4, 1930  
From 9:00 a. m. to 5:00 p. m.

for the purpose of receiving objections and suggestions relative to the 1930 Tax Assessment Roll for Troy Township. This Tax Roll is for the purpose of raising State, County, School, Township, and Road taxes. All persons interested in this matter are cordially invited to appear before this Board.

(Signed) GARNER MILLER,  
Superior of Troy Township.

Dated May 21, 1930.

### Notice of Bloomfield Township Board of Review Meeting

Notice is hereby given that the Board of Review for the Township of Bloomfield will meet in the Bloomfield township offices, in the Municipal Bldg.

JUNE 3-10 inclusive, 1930  
From 9:00 a. m. to 5:00 p. m.

for the purpose of receiving objections and suggestions relative to the 1930 Tax Assessment Roll for Bloomfield township, including Birmingham. This Tax Roll is for the purpose of raising State, County, School, Township, and Road taxes. All persons interested in this matter are cordially invited to appear before this Board.

(Signed) ROBERT Y. MOORE,  
Superior of Bloomfield Township.

Dated May 21, 1930.

### Sales and Service

for the

### HARDIE

Dependable Power

### SPRAYER

We carry a complete line of power and hand sprayers, also a complete line of hose, runs and parts.

### BIRMINGHAM LAWN & GOLF SUPPLY CO.

1322 S. Woodward Ave.

Birmingham

Phone 123

W. A. Gibbons, Owner

### TREES

Trimming - Spraying

Surgery

### LANDSCAPE

Designing-Planting

Construction

### EMERSON C. BROWN CO.

Landscape Gardening and Tree Surgery

PHONE 308-W

BIRMINGHAM, MICH.

12 LEVINSON BLDG.

12 LEVINSON BLDG.

12 LEVINSON BLDG.

12 LEVINSON BLDG.

12 LEVINSON BLDG.

12 LEVINSON BLDG.

12 LEVINSON BLDG.

12 LEVINSON BLDG.

12 LEVINSON BLDG.

12 LEVINSON BLDG.

12 LEVINSON BLDG.

12 LEVINSON BLDG.

12 LEVINSON BLDG.

12 LEVINSON BLDG.

12 LEVINSON BLDG.

12 LEVINSON BLDG.

12 LEVINSON BLDG.

12 LEVINSON BLDG.

12 LEVINSON BLDG.

12 LEVINSON BLDG.

12 LEVINSON BLDG.

12 LEVINSON BLDG.