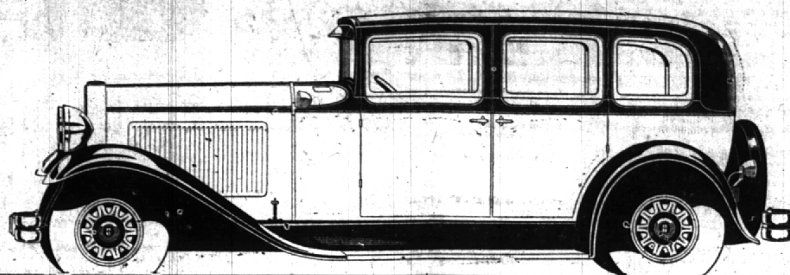


1930 NASH "400"



Eights and Sixes



Eights and Sixes

Miller-Judd Co., Distributors Announce a new Nash Dealer for Birmingham **BELL BROS. SALES & SERVICE**

Nash Features You Should Know

Centralized chassis lubrication, built-in, automatic radiator shutters, and the world's easiest steering in every model. Adjustable front seats. Steel spring covers with lifetime lubrication in the Twin-Ignition Eight and Twin-Ignition Six lines. The priceless protection at no extra cost of Duplate, non-shatterable plate glass in all doors, windows, and windshields thruout the Twin-Ignition Eight line. This glass is also available at slight extra cost in all other Nash cars.

SINGLE SIX
\$935 to \$1155

TWIN-IGNITION SIX
\$1325 to \$1745

TWIN-IGNITION EIGHT
\$1675 to \$2385

All prices f. o. b. factory
Convenient Monthly Payments if Desired

NOW EVERY NASH owner and owner-to-be in Birmingham and vicinity will have available the very finest facilities for service, under the direction of Howard Bell and A. F. Bottrell.

You are invited to avail yourself of these facilities, to drive in at any time for consultation about any motoring problem. We are equipped to render immediate, painstaking, fairly priced service, and every courtesy will be shown you.

Come in and see the New Nash series of motor cars. The Twin Ignition Eight - the only straight eight at the price with twin ignition, 9 bearing, integrally counter weighted crankshaft, aluminum alloy connecting rods, Bijur Centralized Chassis Lubrication and Duplate non shatterable plate glass throughout.

Then there is the Twin Ignition Six and the Single Six - the only car in the \$1000 class with automatic centralized chassis lubrication; automatic, thermostat-controlled radiator shutters; headlamps and cowl lamps chromium nickled; twin cowl ventilators; and a high compression, completely lubricated 7 bearing motor.

BELL BROS. SALES AND SERVICE

314 EAST MAPLE AVE.

BIRMINGHAM