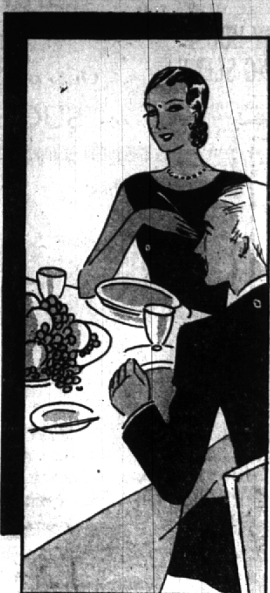


Introducing
Our New

Ice
Cream

Cherry
Blossom
Brand

Free
Sample
Fri. & Sat.
to
SHOPPERS



Fri. and Sat. Specials

Campbells Beans - 3 Cans 20c

Velvet Pastry Flour 5 lb Sack 26c

Coffee Light House Maxwell House Del Monte lb. 37c

Pickles Cherry Blossom Sweet or Mixed Qt. Jar. 29c

Iced Teas Light House Orange Pekoe 1/2 lb. 35c

Salad Dre Light House Brand Full Jar 17c

Toddy Very Refreshing 1-Lb. Can 35c

Listen Children's Toddy Party WWJ Each Thursday, 5:30 P. M.

Del Monte Spinach 2 No. 2 Cans 25c

Large No. 2 1/2 Can 16c—Thoroughly Cleaned

Salt Light House Iodized or Free Running 2 Full Pkg. 15c

Oak Crest Coffee 1-Lb. Can 29c

Raisin Fruit Bars lb. 23c

Something New—Delicious

Meat

PORK LOIN Whole Loin or Rib Half lb. 23c

BEEF POT ROAST Choice Cuts lb. 23c

Fruit and Vegetables

TOMATOES Fancy Red Ripe lb. 15c

CANTALOUPE California Imperial Valley 2 for 29c

NEW POTATOES U. S. No. 1 Red Triumph 6 lbs. 29c

SPINACH Home Grown 2 lbs. 13c

GREEN ONIONS Bunch 5c

NATIONAL
SELF SERVE **GROCETERIAS** NO WAITING

BALDWIN CONTINUE TEST LOSES AFTER OF NEW WELL PITCHING DUEL

Game Goes Extra Inning Before Grosse Pointe Nine Wins, 4-3

WEDGE FANS THIRTEEN

In the closest game of the present season the Baldwin High School Tuesday lost to the Grosse Pointe High School nine in an extra inning game, 4-3 at Grosse Pointe. The tilt was the second pitching duel in which Clarence Wedge, Baldwin southpaw, engaged. He struck out 13 men and allowed only six hits while Bennett of Grosse Pointe fanned nine and permitted five hits.

The contest was decided in an extra inning of play after the score had been tied at three runs in the third frame by Birmingham and remained that way through the end of the seventh. Holman, who walked, scored the deciding run when Spanisky, Grosse Pointe right fielder, singled after the Pointers' short-stop, Munro, did likewise and an error on Moore, Baldwin third baseman, allowed Finger to fill the bases. The three men who appeared before the Millionaires' pitcher, Bennett, all fled out. Brian sent a fly to the left field, Ford hit to first and a pop fly retired McKee. Brian made the first run of the fray in the first inning. A sacrifice hit by McKee put him on third after he doubled. Brian scored when Ford fled out to Wermet. Grosse Pointe bagged one run in their part of the first to knot the score.

Schwarze and Wedge made two hits each for Baldwin and McKee also got a single. Wedge gave free access to first twice while Bennett walked the same number.

Score by innings:
Birmingham 1 0 2 0 0 0 0—3
Grosse Pte. 1 0 2 0 0 0 1—4

TWO SOLDIERS ARE IDENTIFIED

Last Of Polar Bear Heroes Now Known; Plan Memorial Day Service

Memorial Day services for the Polar Bear dead, whose bodies were brought back from Russia last year, will be one of the most impressive military funerals ever held in this country, more than 100,000 persons being expected to attend, according to Col. Walter C. Dandon, president of the Polar Bear association, who announced on Tuesday that the last two bodies had been identified.

The soldiers were two Detroit boys, Nikodin Ladovich, whose parents live in Lithuania, and Boleslaw Gutkowski, whose parents live in Poland. Both boys were members of C company, 339th Infantry.

Dandon also revealed that a controversy had arisen over the final interment of these two bodies which Senator Arthur Vandenberg had been called in to settle. The Army quartermaster's department had requested that the soldiers be buried at Arlington Cemetery in the national shrine at Washington, whereas the Polar Bear organization had planned to bury them at the White Chapel Memorial cemetery with the 46 others.

Vandenberg who had been instrumental in raising the funds from Washington to bring the bodies back, succeeded in obtaining a ruling from the war department permitting interment here with their comrades, in the absence of specific instructions from the parents of the soldiers.

State, City and federal officials will join with veterans organizations and representatives of Protestants, Catholic and Jewish faiths in a united ceremony.

DETROIT PLAYERS TO GIVE 2 SHOWS

Franklin Village Will Be Scene Of Drama And New Puppet Show

Two special holiday performances, a puppet show and the presentation of the mystery thriller, "Remote Control," will be presented by the Detroit Players at Franklin Village on Friday, May 23, under the direction of T. Rice. The puppet show, of special interest to children, will be given at 2 matinees, the dramatic selection will be presented in the evening.

The Detroit Players, a traveling organization associated with the Detroit Civic Theater, offer a novel form of tent show entertainment under "the big top." Preparations for the puppet show have been under way for several weeks. The regular orchestra and a new "Music Box" amplifier that has exceptionally strong volume, will contribute the music for the performances.

Mr. and Mrs. Joseph Mack have moved into their home on Quarant road for the summer.

Crosley - Amrad or Fada Service
PHONE 2383

Village Pumps 1,000 Gallons Per Minute From Derby Water Supply

After nine days of continuous pumping, in which approximately 1,000 gallons of water per minute have been forced through the pipes, the new village well in Pembroke Manor at Eaton and Derby streets, is fulfilling its function as contracted by the well-drilling company, according to a report made yesterday afternoon by James W. Parry, Village Manager.

The operation is under the supervision of Ralph Main and will cost the village approximately \$800, Mr. Parry said. Several reports of fire hydrants having been forced open by the heavy pressure have been made and two wells, one at Springdale Park and another at Adams road near the Wattle road have been lowered during the past few days. The wells were not dried up but were dug only a few feet beneath the surface, Mr. Parry said. They will return to their normal level when the test is completed, he declared.

LIONS CLUB IS ENTERTAINED

Lorraine Elliott, 11 years old, and Mrs. G. Dewey Kimball, entertained members of the Birmingham Lions Club at their regular meeting yesterday in the new Community House with a program that was received with marked enthusiasm.

Little Miss Elliott danced and sang to the accompaniment furnished by Stanley Rosko while Mrs. Kimball gave selected readings, among which was included, "A Cutting From Seven Oaks" by J. G. Holland.

FRANK E. COUCH

Decorator
ROOMS PAPERED COMPLETE
\$6.00 and up
Crafts a Specialty
EXTERIOR PAINTING
Estimate Free
Birm. 1500



D.J. Healy's
Fashion & Fur City

Ten To One!
You'll Find Your
Smart Holiday Frock
in Healy's Suburban Shop

Because ten to one you're looking for a gay print, a jacket suit, a sleeveless chiffon or any of the other fashion successes! Our suburban shop features a delightful variety at prices to please the most practical pocketbooks.

Featuring Saturday

New Moire Suits
\$15.00

A green and white suit is sketched, others in red and white, brown and eggshell. Moire sleeveless dresses in white, pink, yellow, green, and blue. Sizes 14 to 20. They launder perfectly, too!

Sale Chiffon Stockings

Friday only... Healy's Exclusive Duveney quality ordinarily higher priced and in the smartest new shades for summer!

\$1

WABEEK BUILDING



SPECIAL PRESENTATION of the Tone Selector

the newest development in
Radio... offered exclusively
in the NEW GENERAL MOTORS RADIO

Demonstrations of the new General Motors Radio have caused thousands to call the TONE SELECTOR the greatest achievement in modern radio! A special presentation is in progress now—showing how this exclusive General Motors Radio feature puts complete Mastery of Tone at your finger tips... lets you choose the exact shading of bass or treble that you prefer, for every type of program. ● On display during this special presentation are all the models of the new General Motors Radio—in superb period cabinets, as distinguished as the finest furniture. See and hear these remarkable new instruments. Come in today for a demonstration of radio at its very best!

PRODUCT OF GENERAL MOTORS RADIO CORPORATION

WAGNER ELECTRIC CO.

272 WEST MAPLE ROAD
BIRMINGHAM, MICHIGAN

STANDARD OF QUALITY